



Chipsmall Limited consists of a professional team with an average of over 10 year of expertise in the distribution of electronic components. Based in Hongkong, we have already established firm and mutual-benefit business relationships with customers from,Europe,America and south Asia,supplying obsolete and hard-to-find components to meet their specific needs.

With the principle of “Quality Parts,Customers Priority,Honest Operation,and Considerate Service”,our business mainly focus on the distribution of electronic components. Line cards we deal with include Microchip,ALPS,ROHM,Xilinx,Pulse,ON,Everlight and Freescale. Main products comprise IC,Modules,Potentiometer,IC Socket,Relay,Connector.Our parts cover such applications as commercial,industrial, and automotives areas.

We are looking forward to setting up business relationship with you and hope to provide you with the best service and solution. Let us make a better world for our industry!



## Contact us

Tel: +86-755-8981 8866 Fax: +86-755-8427 6832

Email & Skype: [info@chipsmall.com](mailto:info@chipsmall.com) Web: [www.chipsmall.com](http://www.chipsmall.com)

Address: A1208, Overseas Decoration Building, #122 Zhenhua RD., Futian, Shenzhen, China



NOTES:

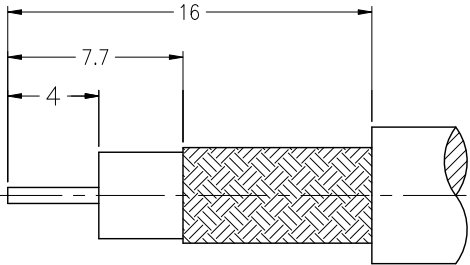
1. MATERIALS AND FINISHES:  
BODY – BRASS, NICKEL PLATING  
CONTACT – BRASS, GOLD PLATING  
INSULATOR – DELRIN, NATURAL
2. ELECTRICAL:  
A. IMPEDANCE: 75 OHM  
B. FREQUENCY RANGE: DC TO 2 GHz  
C. DIELECTRIC WITHSTANDING VOLTAGE: 1500 VRMS, MIN.
3. MECHANICAL:  
A. DURABILITY: 500 CYCLES MIN.  
B. TEMPERATURE RANGE: – 40°C to +85°C
4. CRIMPED FERRULE  
HEX CRIMP SIZE .305"
5. HEX CRIMP SIZE  
FOR CENTER CONTACT .068"
6. USE AMPHENOL CRIMP TOOL #CTL-2

THIRD ANGLE PROJ.

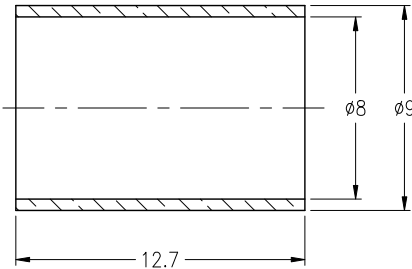
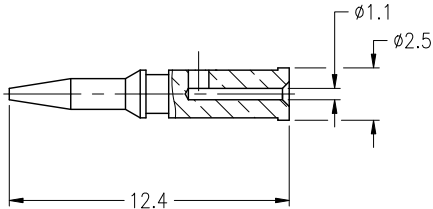
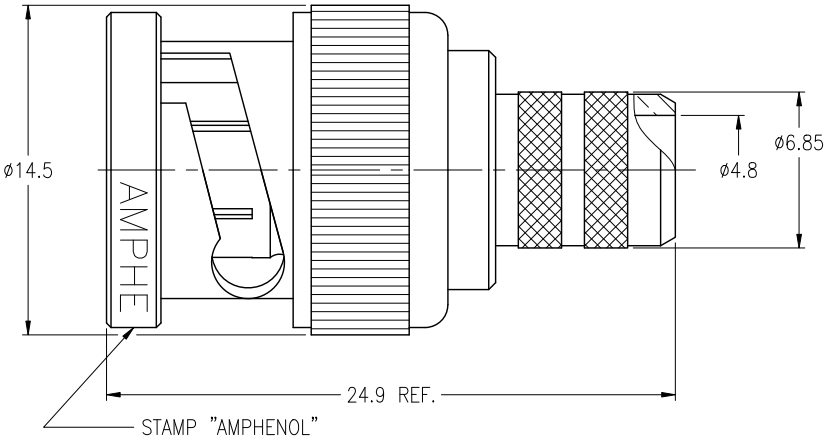
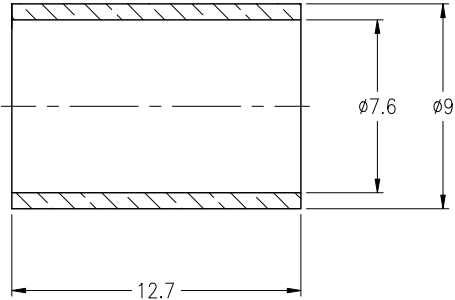


REVISIONS

REV	DESCRIPTION	DATE	ECO	APPR
A	RELEASE TO MFG.	03-May-91	38063	DR
F	SPRING WAS CHANGED	11-Jul-12	47967	TD



RECOMMENDED  
CABLE STRIPPING DIM'S



**CUSTOMER OUTLINE DRAWING**  
ALL OTHER SHEETS ARE FOR INTERNAL USE ONLY

UNLESS OTHERWISE SPECIFIED, DIMENSIONS ARE IN METRIC AND TOLERANCES ARE:  
<0.5mm ±0.05mm 0.5 – 6mm ±0.1mm 6 – 30mm ±0.2mm 30 – 120mm ± 0.3mm ANGLES ±1°

NOTICE – These drawings, specifications, or other data (1) are, and remain the property of Amphenol Corp. (2) must be returned upon request; and (3) are confidential and not to be disclosed to any person other than those to whom they are given by Amphenol Corp. The furnishing of these drawings, specifications, or other data by Amphenol Corp., or to any other person to anyone for any purpose is not to be regarded by implication or otherwise in any manner licensing, granting rights or permitting such holder or any other person to manufacture, use or sell any product, process or design, patented or otherwise, that may in any way be related to or disclosed by said drawings, specifications, or other data.

MATERIAL

REFERENCE  
EAR 962370  
EAR 967010-0  
EAR 967127-0

FINISH

DRAWN  
T.DENG

DATE  
11-Jul-12

ENGINEER  
T.AUBIN

DATE  
17-Jun-98

APPROVED  
S.HSIEH

DATE  
11-Jul-12

CAD FILE  
F:\DWG\APL\CNPD\RFX\31\71000\00-FSZ

TITLE

BNC CRIMP PLUG  
FOR BELDEN 9248,  
RG6 CABLE, 75 OHM

SCALE: 3/1

SHEET 2 OF 2

DWG SIZE  
B

REV  
F

Amphenol RF

Danbury CT USA, Tainan Taiwan, Shenzhen China  
www.amphenolrf.com

DRAWING NO. 31-71000-ND3G-6U-75

ITEM NO. 011121ACM61ND7F

PART NO. 31-71000-RFX