



Chipsmall Limited consists of a professional team with an average of over 10 year of expertise in the distribution of electronic components. Based in Hongkong, we have already established firm and mutual-benefit business relationships with customers from,Europe,America and south Asia,supplying obsolete and hard-to-find components to meet their specific needs.

With the principle of “Quality Parts,Customers Priority,Honest Operation,and Considerate Service”,our business mainly focus on the distribution of electronic components. Line cards we deal with include Microchip,ALPS,ROHM,Xilinx,Pulse,ON,Everlight and Freescale. Main products comprise IC,Modules,Potentiometer,IC Socket,Relay,Connector.Our parts cover such applications as commercial,industrial, and automotives areas.

We are looking forward to setting up business relationship with you and hope to provide you with the best service and solution. Let us make a better world for our industry!



## Contact us

Tel: +86-755-8981 8866 Fax: +86-755-8427 6832

Email & Skype: [info@chipsmall.com](mailto:info@chipsmall.com) Web: [www.chipsmall.com](http://www.chipsmall.com)

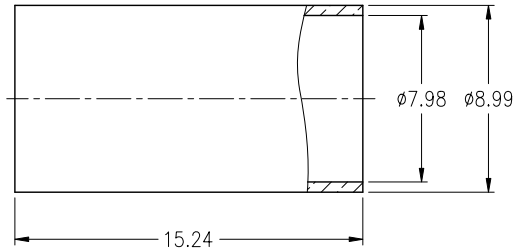
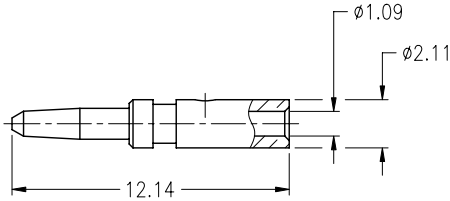
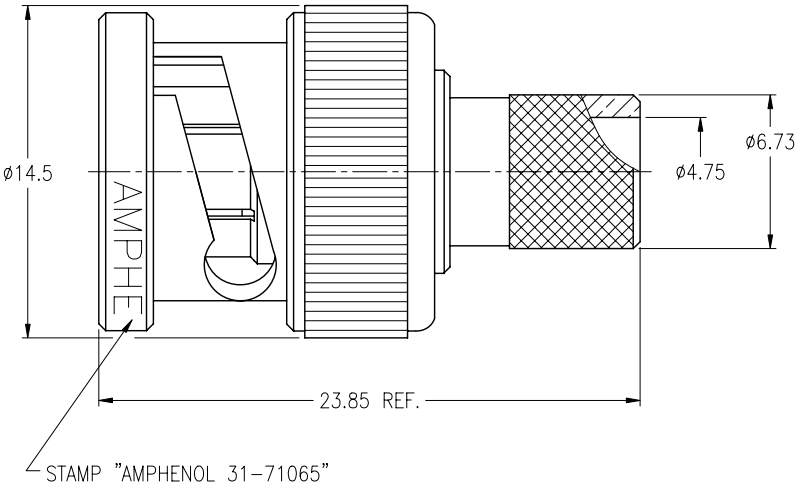
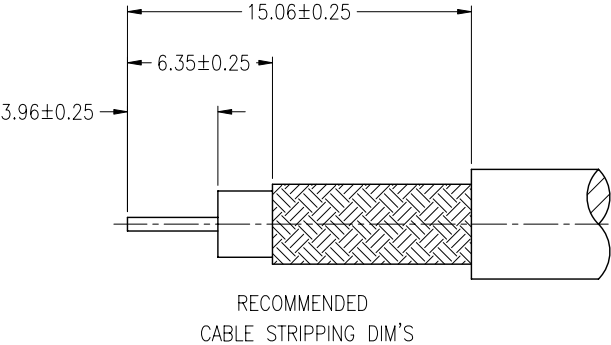
Address: A1208, Overseas Decoration Building, #122 Zhenhua RD., Futian, Shenzhen, China



NOTES:

1. MATERIALS AND FINISHES:  
BODY – BRASS, NICKEL PLATING  
CONTACT – BRASS, GOLD PLATING  
INSULATOR – PTFE, NATURAL
2. ELECTRICAL:  
A. IMPEDANCE: 75 OHM  
B. FREQUENCY RANGE: DC 0–2 GHz  
C. DIELECTRIC WITHSTANDING VOLTAGE: 1500 VRMS, MIN.
3. MECHANICAL:  
A. DURABILITY: 500 CYCLES MIN.  
B. TEMPERATURE RANGE: –65°C to +165°C
4. SOLDER CONTACT TO CABLE.  
WHEN CRIMPING CONTACT PIN TO CABLE, CRIMP WITH AMPHENOL TOOL 227–944 (M22520/5–01) AND DIE SET 227–1221–32, CAVITY 'B' (OR CTL–2, .068 HEX)
5. WHEN CRIMPING FERRULE TO CABLE, CRIMP WITH AMPHENOL TOOL 277–944 (M22520/5–01) AND DIE SET 227–1221–32 CAVITY 'A' (OR CTTL–2, .324 HEX)
6. USE WITH BELDEN 9290, RG 6 TYPE CABLE (ø7.49 MAX)

THIRD ANGLE PROJ.		REVISIONS			
B	SEE SHEET 1	27-Jul-05	--	SH	
B1	SEE SHEET 1	16-Aug-05	---	SH	
C	SEE SHEET 1	27-Feb-08	--	AW	
D	SEE SHEET 1	23-Mar-10	47967	SH	
E	NOTE 4 WAS CHANGED\RD-10121301F	27-Dec-10	48342	SH	



**CUSTOMER OUTLINE DRAWING**  
ALL OTHER SHEETS ARE FOR INTERNAL USE ONLY

UNLESS OTHERWISE SPECIFIED, DIMENSIONS ARE IN METRIC AND TOLERANCES ARE: <0.5mm ±0.05mm    0.5 – 6mm ±0.1mm    6 – 30mm ±0.2mm    30 – 120mm ± 0.3mm    ANGLES ±1°	MATERIAL	DRAWN F.WANG	DATE 27-Dec-10	TITLE BNC PLUG (75 OHM) FOR RG 6 TYPE CABLE (ø7.49 MAX) DOUBLE SHIELDED CABLE			Amphenol RF Danbury CT USA, Tainan Taiwan, Shenzhen China www.amphenolrf.com	
		ENGINEER S.LI	DATE 27-Dec-10					
NOTICE – These drawings, specifications, or other data (1) are, and remain the property of Amphenol Corp. (2) must be returned upon request; and (3) are confidential and not to be disclosed to any person other than those to whom they are given by Amphenol Corp. The furnishing of these drawings, specifications, or other data by Amphenol Corp., or to any other person to anyone for any purpose is not to be regarded by implication or otherwise in any manner licensing, granting rights or permitting such holder or any other person to manufacture, use or sell any product, process or design, patented or otherwise, that may in any way be related to or disclosed by said drawings, specifications, or other data.	REFERENCE	APPROVED S.HSIEH	DATE 27-Dec-10	SCALE: 3/1	SHEET 2 OF 2		ITEM NO.	31-71065
		CAD FILE	F:\DWG\CNPD\31\71065-ESZ	DWG SIZE	CODE ID	REV	PART NO.	31-71065
		FINISH		B	74868	E		