



Chipsmall Limited consists of a professional team with an average of over 10 year of expertise in the distribution of electronic components. Based in Hongkong, we have already established firm and mutual-benefit business relationships with customers from,Europe,America and south Asia,supplying obsolete and hard-to-find components to meet their specific needs.

With the principle of "Quality Parts,Customers Priority,Honest Operation,and Considerate Service",our business mainly focus on the distribution of electronic components. Line cards we deal with include Microchip,ALPS,ROHM,Xilinx,Pulse,ON,Everlight and Freescale. Main products comprise IC,Modules,Potentiometer,IC Socket,Relay,Connector.Our parts cover such applications as commercial,industrial, and automotives areas.

We are looking forward to setting up business relationship with you and hope to provide you with the best service and solution. Let us make a better world for our industry!



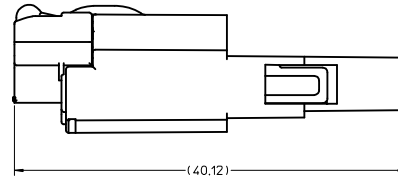
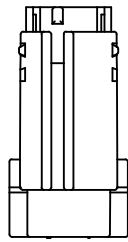
## Contact us

Tel: +86-755-8981 8866 Fax: +86-755-8427 6832

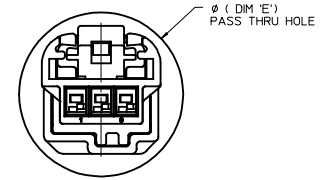
Email & Skype: info@chipsmall.com Web: www.chipsmall.com

Address: A1208, Overseas Decoration Building, #122 Zhenhua RD., Futian, Shenzhen, China

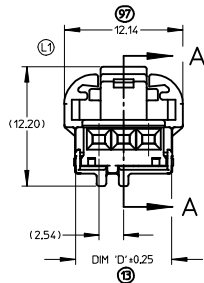
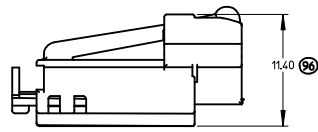




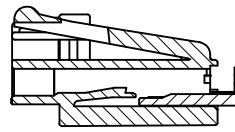
OVERALL MATED LENGTH



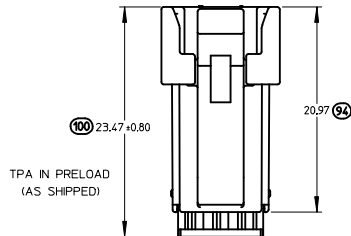
MALE AND FEMALE ASSEMBLY  
PASS THRU VIEW  
(CAD GENERATED)



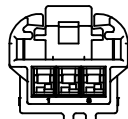
MATING SIDE



SECTION A-A  
SCALE 4:1



TPA IN PRELOAD  
(AS SHIPPED)



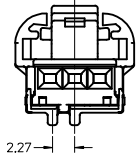
WIRE SIDE

- NOTES:
1. MATERIAL: HOUSING: SPS GLASS FILLED, COLOR SEE CHART.  
TPA: PBT
  2. PRODUCT SPECIFICATIONS - IN-LINE MATING INTERFACE: PS-31067-0001.  
- DIRECT CONNECT MATING INTERFACE: PS-31100-0001.
  3. PACKAGING SPECIFICATION: DRAWING PK-30907-737.
  4. MATES WITH: SEE SALES DRAWINGS SD-31100-003 (MALE IN-LINE),  
SD-31197-003 (RIGHT ANGLE HEADER), SD-31101-114 (VERTICAL  
"WINGED" HEADER), AND SD-31204-003 (VERTICAL HEADER).
  5. TERMINAL PLATING: TIN (Sn) OVERALL, BRITE FINISH.  
THICKNESS = 15 MICROMETER MINIMUM,  
NICKEL (Ni) UNDERPLATE OVERALL.
  6. PACKAGING: PLEASE REFERENCE MOLEX SPECIFICATION PS-34646-001,  
AVAILABLE AT WWW.MOLEX.COM. (REFERENCE: TPAs THAT ARE FOUND IN  
SEATED (FINAL LOCK) POSITION)
  7. APPLICATION SPECIFICATION: AS-31067-100.

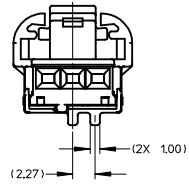
<b>ENTER DESCRIPTION</b> IEC NO. UAU2017-0147 DRAWN/FISCHER01 2016/08/17 CHKD: APPR:BRALMAN 2016/08/17	<b>QUALITY SYMBOLS</b> =0 =0	<b>GENERAL TOLERANCES (UNLESS SPECIFIED)</b>		<b>DIMENSION STYLE</b> MM ONLY	SCALE 1:1	DESIGN UNITS METRIC	THIRD ANGLE PROJECTION		
		4 PLACES ± 0.15	3 PLACES ± 0.13	2 PLACES ± 0.25	1 PLACE ± 0.25	ANGLULAR ± 1/2°	DRAFT WHERE APPLICABLE MUST REMAIN WITHIN DIMENSIONS	DRAWN BY BDI CK01	DATE 6/22/2007
		CHECKED BY CD LLLON		DATE 6/22/2007		APPROVED BY		DATE	
		MATERIAL NO. SEE CHART		DOCUMENT NO. SD-31109-003		MOLEX INCORPORATED		SHEET NO. 1 OF 4	

FEMALE VIEWED FROM MATING SIDE

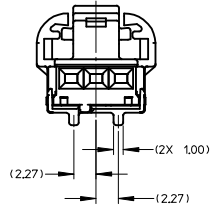
3 WAY POLARIZATION 'A'



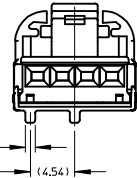
3 WAY POLARIZATION 'B'



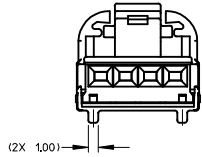
3 WAY POLARIZATION 'C'



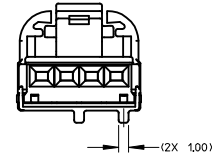
4 WAY POLARIZATION 'A'



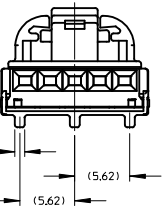
4 WAY POLARIZATION 'B'



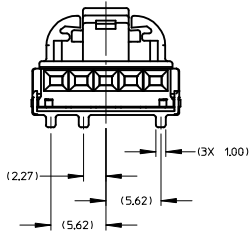
4 WAY POLARIZATION 'C'



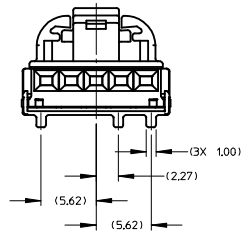
5 WAY POLARIZATION 'A'



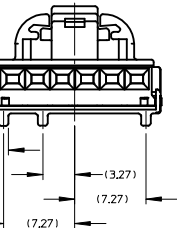
5 WAY POLARIZATION 'B'



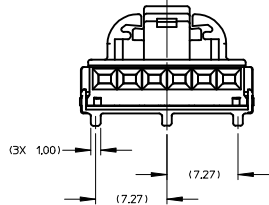
5 WAY POLARIZATION 'C'



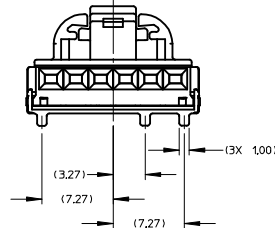
6 WAY POLARIZATION 'A'



6 WAY POLARIZATION 'B'



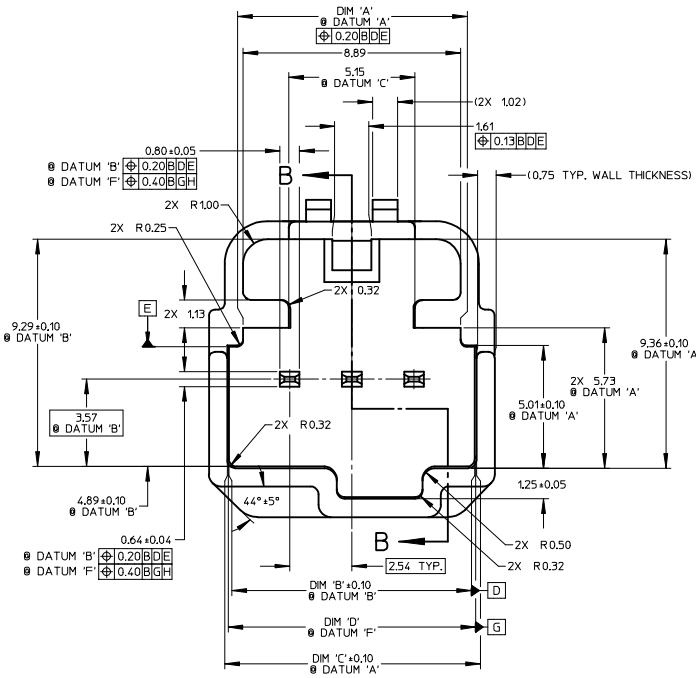
6 WAY POLARIZATION 'C'



BILL OF MATERIALS							MATING ASSEMBLIES PART NUMBERS				
ASSEMBLY PART NUMBER	DESCRIPTION	PART NUMBER	DESCRIPTION	COLOR	DIM 'D'	DIM 'E'	IN-LINE MALE ASSEMBLY W/O XH&S SLOT	IN-LINE MALE ASSEMBLY W/ XH&S SLOT	RIGHT ANGLE MALE HEADER ASSEMBLY	VERTICAL MALE HEADER ASSEMBLY	VERTICAL MALE WINGED HEADER ASSY
31067-1010	3 WAY FEMALE ASSEMBLY POLARIZATION 'A'	31111-0030	FEMALE HOUSING	BLACK	9.80	16.76	31067-1040	31067-1070	31100-0030 NOT TOOLED	31101-0030 NOT TOOLED	TBD
		31113-0030	TPA	NATURAL (WHITE)							
31067-1011	3 WAY FEMALE ASSEMBLY POLARIZATION 'B'	31111-0031	FEMALE HOUSING	GRAY	9.80	16.76	31067-1041	31067-1071	31100-0031 NOT TOOLED	31101-0031 NOT TOOLED	TBD
		31113-0030	TPA	NATURAL (WHITE)							
31067-1012	3 WAY FEMALE ASSEMBLY POLARIZATION 'C'	31111-0032	FEMALE HOUSING	BROWN	9.80	16.76	31067-1042	31067-1072	31100-0032 NOT TOOLED	31101-0032 NOT TOOLED	TBD
		31113-0030	TPA	NATURAL (WHITE)							
31068-1010	4 WAY FEMALE ASSEMBLY POLARIZATION 'A'	31157-0040	FEMALE HOUSING	BLACK	12.34	18.25	31068-1040	31068-1070	31100-0040	31101-0040	31101-1140
		31158-0040	TPA	NATURAL (WHITE)							
31068-1011	4 WAY FEMALE ASSEMBLY POLARIZATION 'B'	31157-0041	FEMALE HOUSING	GRAY	12.34	18.25	31068-1041	31068-1071	31100-0041	31101-0041	31101-1240
		31158-0040	TPA	NATURAL (WHITE)							
31068-1012	4 WAY FEMALE ASSEMBLY POLARIZATION 'C'	31157-0042	FEMALE HOUSING	BROWN	12.34	18.25	31068-1042	31068-1072	31100-0042	31101-0042	31101-1340
		31158-0040	TPA	NATURAL (WHITE)							
31072-1010	5 WAY FEMALE ASSEMBLY POLARIZATION 'A'	31160-0050	FEMALE HOUSING	BLACK	14.88	20.25	31072-1040	31072-1070	31100-0050 NOT TOOLED	31101-0050 NOT TOOLED	TBD
		31161-0050	TPA	NATURAL (WHITE)							
31072-1011	5 WAY FEMALE ASSEMBLY POLARIZATION 'B'	31160-0051	FEMALE HOUSING	GRAY	14.88	20.25	31072-1041	31072-1071	31100-0051 NOT TOOLED	31101-0051 NOT TOOLED	TBD
		31161-0050	TPA	NATURAL (WHITE)							
31072-1012	5 WAY FEMALE ASSEMBLY POLARIZATION 'C'	31160-0052	FEMALE HOUSING	BROWN	14.88	20.25	31072-1042	31072-1072	31100-0052 NOT TOOLED	31101-0052 NOT TOOLED	TBD
		31161-0050	TPA	NATURAL (WHITE)							
31073-1010	6 WAY FEMALE ASSEMBLY POLARIZATION 'A'	31163-0060	FEMALE HOUSING	BLACK	17.42	22.75	31073-1040	31073-1070	31100-0060 NOT TOOLED	31101-0060 NOT TOOLED	TBD
		31164-0060	TPA	NATURAL (WHITE)							
31073-1011	6 WAY FEMALE ASSEMBLY POLARIZATION 'B'	31163-0061	FEMALE HOUSING	GRAY	17.42	22.75	31073-1041	31073-1071	31100-0061 NOT TOOLED	31101-0061 NOT TOOLED	TBD
		31164-0060	TPA	NATURAL (WHITE)							
31073-1012	6 WAY FEMALE ASSEMBLY POLARIZATION 'C'	31163-0062	FEMALE HOUSING	BROWN	17.42	22.75	31073-1042	31073-1072	31100-0062 NOT TOOLED	31101-0062 NOT TOOLED	TBD
		31164-0060	TPA	NATURAL (WHITE)							

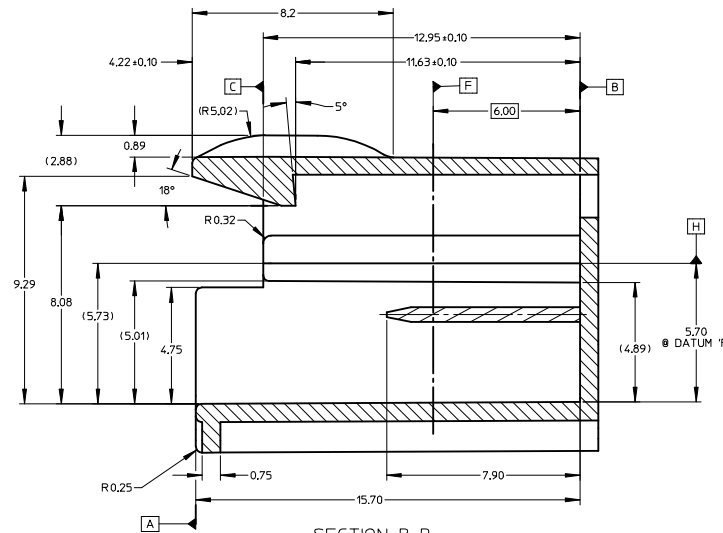
<b>ENTER DESCRIPTION</b> IEC NO. UAU2017-0147 DRAWN/FISHER01 2016/08/17 CHYD: APPROVALMAN 2016/08/17 REVISION	QUALITY SYMBOLS ▽=0 ▽=0		GENERAL TOLERANCES (UNLESS SPECIFIED) mm INCH 4 PLACES ± --- ± --- 3 PLACES ± --- ± --- 2 PLACES ± 0.13 ± --- 1 PLACE ± 0.25 ± --- ANGULAR ±1/2°		DIMENSION STYLE MM ONLY		SCALE 1:1		DESIGN UNITS METRIC		THIRD ANGLE PROJECTION	
	DRAFT WHERE APPLICABLE MUST REMAIN WITHIN DIMENSIONS		MATERIAL NO. SEE CHART		DATE 6/22/2007		DATE 6/22/2007		TITLE FEMALE ASSEMBLY CHARTED SALES DRAWING		MOLEX INCORPORATED	
	SIZE D		THIS DRAWING CONTAINS INFORMATION THAT IS PROPRIETARY TO MOLEX INCORPORATED AND SHOULD NOT BE USED WITHOUT WRITTEN PERMISSION		DOCUMENT NO. SD-31109-003		SHEET NO. 2 OF 4					

# REFERENCE ONLY



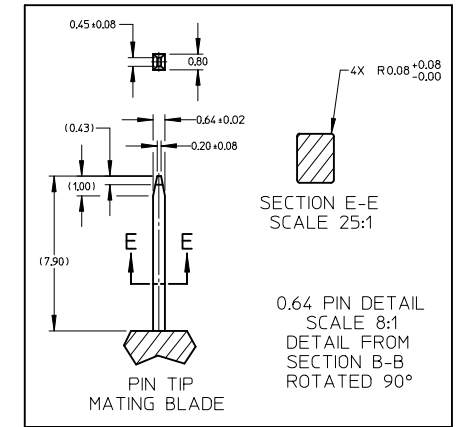
MATING INTERFACE DETAIL  
SCALE 10:1

RECOMMENDED MATING MATERIAL: SPS, 30% GLASS FILLED.



SECTION B-B  
SCALE 10:1

RECOMMENDED DIRECT CONNECT INFO  
FOR MATING FEMALE PARTS ONLY



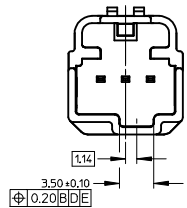
DIMENSIONS FOR DIRECT CONNECT

CIRCUIT SIZE	DIM 'A'	DIM 'B'	DIM 'C'	DIM 'D'
3	8.89	10.05	10.19	10.11
4	11.20	12.59	12.73	12.65
5	13.74	15.13	15.27	15.19
6	16.28	17.67	17.81	17.73

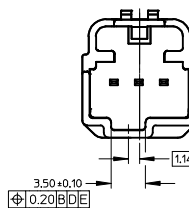
<b>ENTER DESCRIPTION</b> IEC NO. UAU2017-0147 DRAWN/FISCHER01 2016/08/17 CHKD: APPR:BRALMAN 2016/08/17 REV:	QUALITY SYMBOLS ▽=0 ▽=0	GENERAL TOLERANCES (UNLESS SPECIFIED) mm INCH 4 PLACES ±--- ±--- 3 PLACES ±--- ±--- 2 PLACES ±0.13 ±--- 1 PLACE ±0.25 ±--- ANGULAR ±1/2°	DIMENSION STYLE <b>MM ONLY</b>	SCALE <b>1:1</b>	DESIGN UNITS <b>METRIC</b>	THIRD ANGLE PROJECTION	
	DRAWN BY BDICK01	DATE 6/22/2007	CHECKED BY CDILLON	DATE 6/22/2007	TITLE <b>FEMALE ASSEMBLY                  CHARTED SALES DRAWING</b>	MATERIAL NO. <b>SEE CHART</b>	DOCUMENT NO. <b>SD-31109-003</b>
	DRAFT WHERE APPLICABLE MUST REMAIN WITHIN DIMENSIONS			APPROVED BY DATE	MOLEX INCORPORATED	SHEET NO. 3 OF 4	THIS DRAWING CONTAINS INFORMATION THAT IS PROPRIETARY TO MOLEX INCORPORATED AND SHOULD NOT BE USED WITHOUT WRITTEN PERMISSION
	SIZE D						

# REFERENCE ONLY

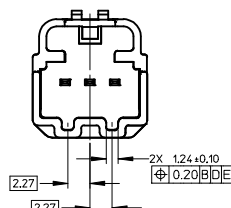
3 WAY POLARIZATION "A"



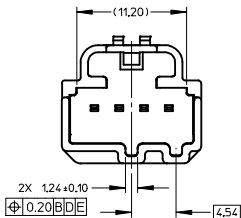
3 WAY POLARIZATION "B"



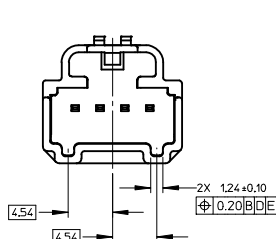
3 WAY POLARIZATION "C"



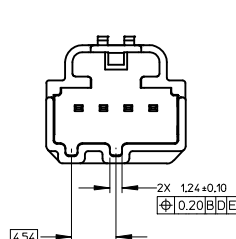
4 WAY POLARIZATION "A"



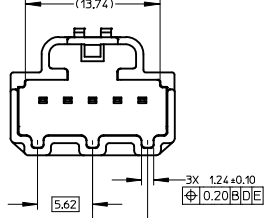
4 WAY POLARIZATION "B"



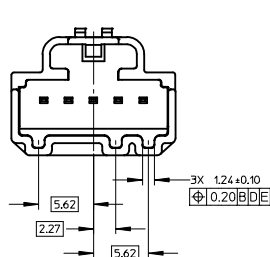
4 WAY POLARIZATION "C"



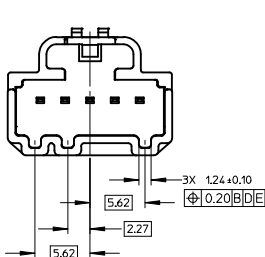
5 WAY POLARIZATION "A"



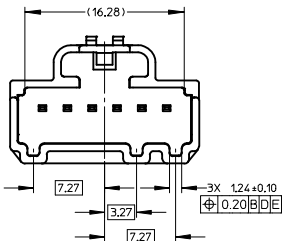
5 WAY POLARIZATION "B"



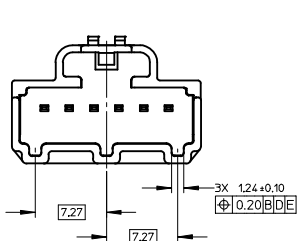
5 WAY POLARIZATION "C"



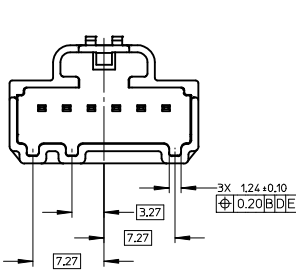
6 WAY POLARIZATION "A"



6 WAY POLARIZATION "B"



6 WAY POLARIZATION "C"



<b>ENTER DESCRIPTION</b> IEC NO: UAU2017-0147 CHYK: APPROVALMAN 2016/08/17 G2	<b>QUALITY SYMBOLS</b> ▽=0 ▽=0		<b>GENERAL TOLERANCES (UNLESS SPECIFIED)</b> mm INCH		<b>DIMENSION STYLE</b> MM ONLY		SCALE 4:1 DESIGN UNITS METRIC		THIRD ANGLE PROJECTION	
	4 PLACES ± --- ± --- 3 PLACES ± --- ± --- 2 PLACES ± 0.13 ± --- 1 PLACE ± 0.25 ± ---		ANGULAR ± 1/2°		DRAFT WHERE APPLICABLE MUST REMAIN WITHIN DIMENSIONS		MATERIAL NO. SEE CHART		DATE 6/22/2007	
	4 PLACES ± --- ± --- 3 PLACES ± --- ± --- 2 PLACES ± 0.13 ± --- 1 PLACE ± 0.25 ± ---		ANGULAR ± 1/2°		DRAFT WHERE APPLICABLE MUST REMAIN WITHIN DIMENSIONS		MATERIAL NO. SEE CHART		DATE 6/22/2007	
	4 PLACES ± --- ± --- 3 PLACES ± --- ± --- 2 PLACES ± 0.13 ± --- 1 PLACE ± 0.25 ± ---		ANGULAR ± 1/2°		DRAFT WHERE APPLICABLE MUST REMAIN WITHIN DIMENSIONS		MATERIAL NO. SEE CHART		DATE 6/22/2007	

FEMALE ASSEMBLY CHARTED SALES DRAWING

MOLEX INCORPORATED

SD-31109-003

SHEET NO. 4 OF 4