



Chipsmall Limited consists of a professional team with an average of over 10 year of expertise in the distribution of electronic components. Based in Hongkong, we have already established firm and mutual-benefit business relationships with customers from,Europe,America and south Asia,supplying obsolete and hard-to-find components to meet their specific needs.

With the principle of “Quality Parts,Customers Priority,Honest Operation,and Considerate Service”,our business mainly focus on the distribution of electronic components. Line cards we deal with include Microchip,ALPS,ROHM,Xilinx,Pulse,ON,Everlight and Freescale. Main products comprise IC,Modules,Potentiometer,IC Socket,Relay,Connector.Our parts cover such applications as commercial,industrial, and automotives areas.

We are looking forward to setting up business relationship with you and hope to provide you with the best service and solution. Let us make a better world for our industry!



## Contact us

Tel: +86-755-8981 8866 Fax: +86-755-8427 6832

Email & Skype: info@chipsmall.com Web: www.chipsmall.com

Address: A1208, Overseas Decoration Building, #122 Zhenhua RD., Futian, Shenzhen, China

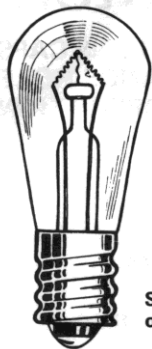


# Large Incandescent Indicators

FOR MOUNTING IN 1" CLEARANCE HOLE  
FOR 6 TO 250V OPERATION

These series indicator lights meet or exceed requirements of MIL-L-3661.

For materials and finishes of products in this group, see page 21D.

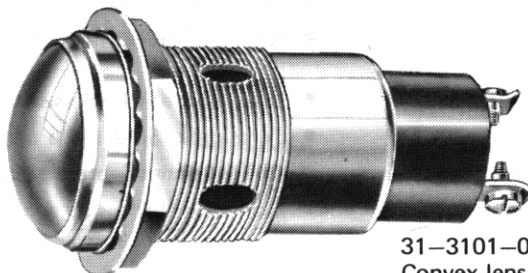


S-6  
CANDELABRA  
SCREW BASE

See lamp ratings  
on page K.

Recognized under the component  
program of Underwriters'  
Laboratories Inc.

75W., 125V.

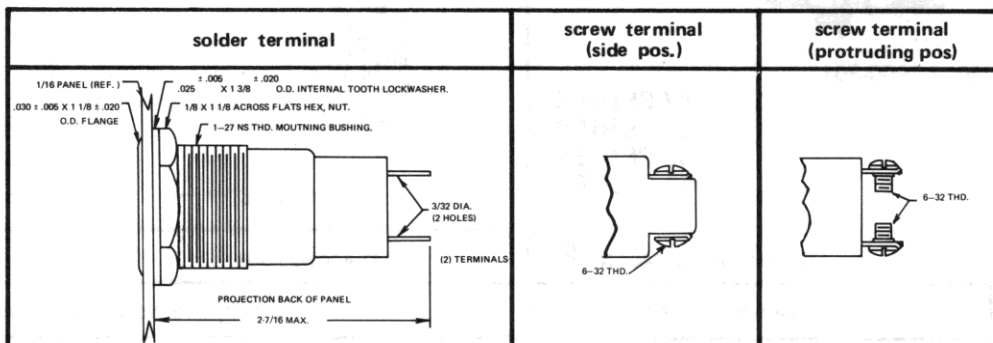


31-3101-0111-301  
Convex lens

Also available with Bayonet lock lens cap,  
contact factory for information.

## WITH FRICTION-FIT LENS CAPS

### 31 SERIES



### BASE PART NUMBERS

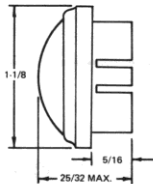
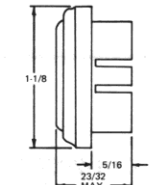
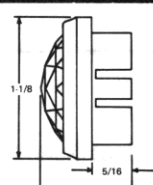
31-4001-01-101

31-0901-01-101

31-3101-01-101

### CAP PART NUMBERS

### COMPLETE ASSEMBLY PART NUMBERS

CAP PART NUMBERS	COMPLETE ASSEMBLY PART NUMBERS		
 <p><b>CONVEX</b> 31-0111-300 back frosted 31-0131-300 unfrosted</p>	<p>31-4001-0111-301 31-4001-0131-301</p>	<p>31-0901-0111-301 31-0901-0131-301</p>	<p>31-3101-0111-301 31-3101-0131-301</p>
 <p><b>FLAT</b> 31-0211-300 back frosted 31-0231-300 unfrosted</p>	<p>31-4001-0211-301 31-4001-0231-301</p>	<p>31-0901-0211-301 31-0901-0231-301</p>	<p>31-3101-0211-301 31-3101-0231-301</p>
 <p><b>FACETED</b> 31-0431-300 unfrosted</p>	<p>31-4001-0431-301</p>	<p>31-0901-0431-301</p>	<p>31-3101-0431-301</p>

For legends on flat faced lens, see page P.

Part numbers shown in gray are normally  
in inventory at your Dialight Distributor.

Order complete with lamp to be assured of receiving the  
indicator light and correct lamp together for immediate use.