



Chipsmall Limited consists of a professional team with an average of over 10 year of expertise in the distribution of electronic components. Based in Hongkong, we have already established firm and mutual-benefit business relationships with customers from,Europe,America and south Asia,supplying obsolete and hard-to-find components to meet their specific needs.

With the principle of “Quality Parts,Customers Priority,Honest Operation,and Considerate Service”,our business mainly focus on the distribution of electronic components. Line cards we deal with include Microchip,ALPS,ROHM,Xilinx,Pulse,ON,Everlight and Freescale. Main products comprise IC,Modules,Potentiometer,IC Socket,Relay,Connector.Our parts cover such applications as commercial,industrial, and automotives areas.

We are looking forward to setting up business relationship with you and hope to provide you with the best service and solution. Let us make a better world for our industry!



Contact us

Tel: +86-755-8981 8866 Fax: +86-755-8427 6832

Email & Skype: info@chipsmall.com Web: www.chipsmall.com

Address: A1208, Overseas Decoration Building, #122 Zhenhua RD., Futian, Shenzhen, China



NOTES: VALID UNLESS OTHERWISE SPECIFIED

1. GENERAL:

- a. APPLICATION SPECIFICATION: AS-31386-200
- b. PRODUCT SPECIFICATION: PS-31387-200
- c. PACKAGING SPECIFICATION: PK-31301-916
- d. PARTS MUST BE IN COMPLIANCE TO MOLEX CHEMICAL SUBSTANCES FOR PRODUCTS AND PACKAGING SPECIFICATION: ES-40000-5016
- e. DATA MUST BE SUBMITTED UNDER THE MOLEX PART NUMBER TO IMDS (COMPANY ID#13255)
- f. DIMENSIONS AND TOLERANCES ARE VALID FOR AS SHIPPED SHROUD ASSEMBLY
- g. REFERENCE GM INTERFACE CONTROL DRAWINGS (ICD)
 - 1. 12582682 (Au)
 - 2. 12642695 (Ag)

2. DESIGN - MATERIALS:

- a. PLASTIC: PBT 30% GF - SEE CHART FOR COLOR
- b. SIGNAL PIN PLATING:
 - UNDERPLATE: NICKEL 1.27-2.54 μ m
 - SELECT GOLD OPTION: 0.76 μ m MIN.
 - SELECT SILVER OPTION: 1.90-3.30 μ m MIN
 - SOLDER TAIL SELECT TIN: 5.08-10.16 μ m BRIGHT FINISH

3. DESIGN - GEOMETRY:

- a. THIS IS A 100% CAD GENERATED PART. THE CAD MATHEMATICAL DATA IS THE MASTER FOR ALL NON-DIMENSIONAL FEATURES. DRAWING DIMENSIONS SHALL BE MET WHEN DIFFERENCES EXIST BETWEEN THE DRAWING AND THE CAD MODEL. UNDERLINED DIMENSIONS OR DIMENSIONS INDICATED AS 'EDITED' MAY BE DIFFERENT FROM THE 3D MODEL GEOMETRY. FOR DIMENSIONAL OR ANY INFORMATION NOT SHOWN ON THIS DRAWING, ANALYZE THE CAD MODEL.
- b. PRODUCT DESIGN MODEL NUMBER(S): SEE BOM TABLE
- c. GEOMETRIC DIMENSIONS AND TOLERANCES PER ASME Y14.5M-1994
- d. GENERAL TOLERANCES - SEE TABLE

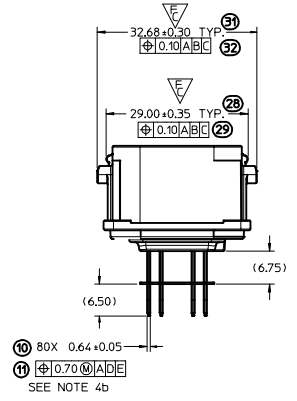
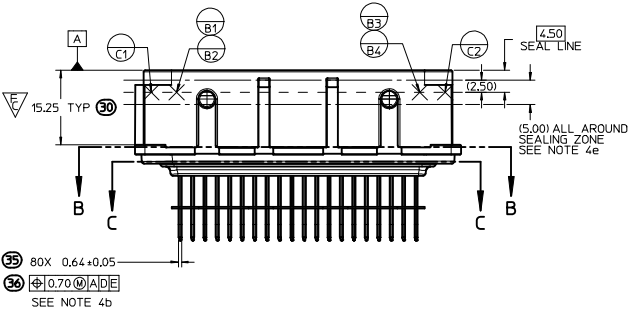
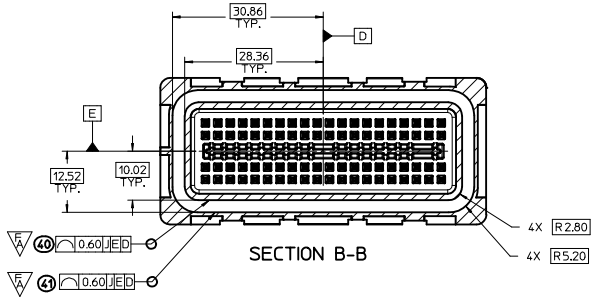
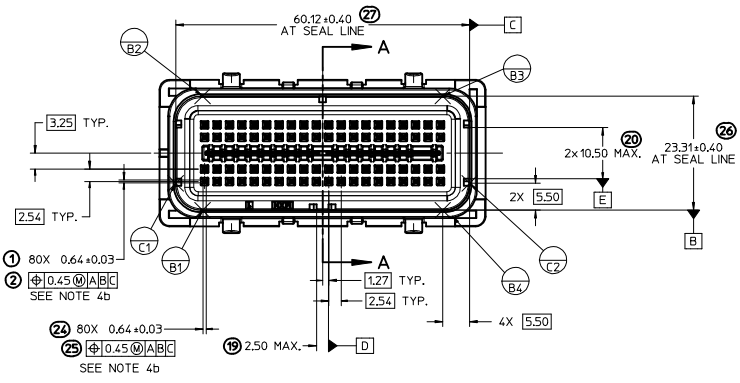
4. DESIGN - MANUFACTURING:

- a. HUMAN READABLE LASER MARKING
 - 1. INFORMATION TO BE PRINTED:
 - DDD - 4 DIGIT JULIAN DATE CODE
 - S_HH - SIXTHCER NUMBER_HOUR NUMBER (24 HOUR CLOCK)
 - MMMM - LAST FOUR DIGITS OF MOLEX MATERIAL NUMBER
 - 2. SIZE: HUMAN LEGIBLE
- b. PIN MATE SIDE AND PCB SIDE TRUE POSITION TO BE VERIFIED ONLINE WITH A GO/NO-GO FUNCTIONAL GAGE.
- c. ANTI-TARNISH FOR Ag PLATING ONLY: SYNTHETIC HYDROCARBON CONTACT SURFACE FINISH OR EQUIVALENT APPLIED WITHOUT VOID TO CONTACT AREA (MIN. 3.7mm FROM PIN TIP).
- d. VISUAL DEFECTS SHALL MEET COSMETIC STANDARD PS-45499-002 (CLASS B)
- e. THERE SHALL BE NO PERMISSIBLE DEFECTS THAT COULD POTENTIALLY PROHIBIT THE FUNCTIONALITY WITHIN THE SEALING SURFACE/ZONE SUCH AS PARTING LINES, MISMATCHES, SINK, TEXTURE VARIATIONS, SCRATCHES/GOUGES, SHORT FILL, PROTRUSIONS, PITS, DENTS/NICKS, BLISTERS OR EJECTOR MARKS.

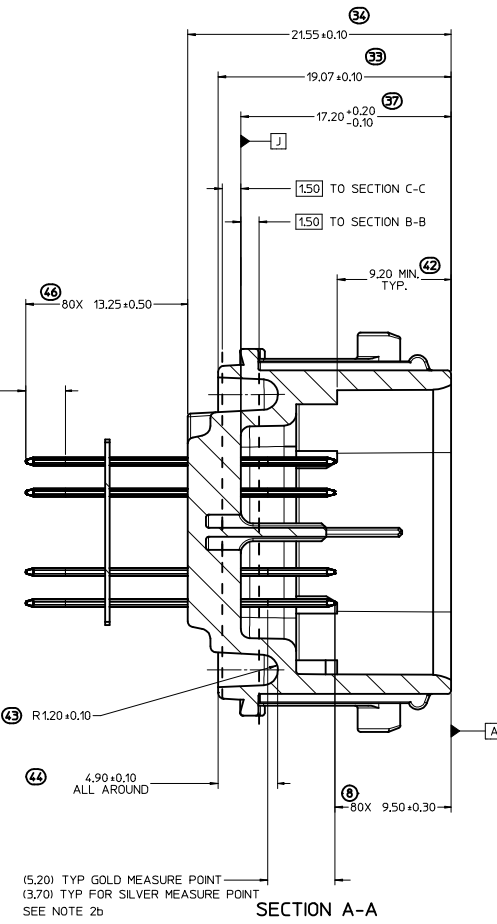
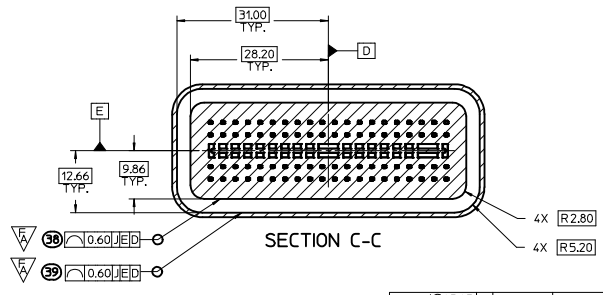
B9	CORRECTED KEY H 'DIM B' VALUE
B8	CORRECTED KEY H 'DIM A' VALUE; CHANGE STATUS TO SALEABLE
B7	UPDATED NOTE 1c SAP# 10595870
B6	ADDED NOTE 4d, e & SEALING ZONE ON PG 2 SAP# 10586362
B5	ADDED BALLOON NUMBERS 1.2,10,11,19,20, 24-44,46,47, DELETED BALLOON NUMBERS 3-7,9,12-15,17, 18, 21-23, 45 EDITED ALL NOTES, STATUS & MATING HARNESS PART NUMBER SAP# 10580347

INSPECTION BALLOON NUMBER LOG	
PER DRAWING REVISION:	B6
LAST BALLOON NUMBER:	47
ADDED BALLOON NUMBER:	1 2 8 10 11 19 20 24 25 26 27 28 29 30 31 32 33 34 35 36 37 38 39 40 41 42 43 44 46 47
DELETED INSPECTION BALLOON NUMBER:	3 4 5 6 7 9 12 13 14 15 16 17 18 21 22 23 45

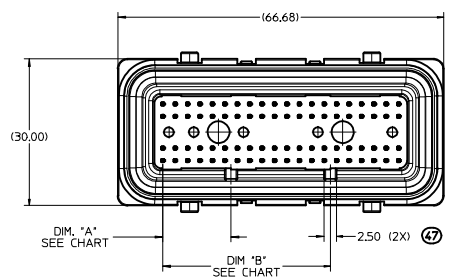
REV	DESCRIPTION	SCALE	DESIGN UNITS	THIRD ANGLE PROJECTION																																													
2:1	METRIC																																																
<table border="1"> <thead> <tr> <th>QUALITY SYMBOLS</th> <th>GENERAL TOLERANCES (UNLESS SPECIFIED)</th> <th>DIMENSION STYLE</th> <th>DRAWN BY</th> <th>DATE</th> <th>TITLE</th> </tr> </thead> <tbody> <tr> <td>$\nabla=0$</td> <td>4 PLACES \pm --- \pm ---</td> <td>MM ONLY</td> <td>FJAKLIC</td> <td>04/30/08</td> <td rowspan="4">80 CKT SHROUD ASSEMBLY 0.64 SQ. PINS MX123 molex</td> </tr> <tr> <td>$\nabla=0$</td> <td>3 PLACES \pm --- \pm ---</td> <td></td> <td>FJAKLIC</td> <td>04/30/08</td> </tr> <tr> <td>$\nabla=0$</td> <td>2 PLACES \pm 0.13 \pm ---</td> <td></td> <td>FJAKLIC</td> <td>04/30/08</td> </tr> <tr> <td>$\nabla=0$</td> <td>1 PLACE \pm 0.25 \pm ---</td> <td></td> <td>APPROVED BY</td> <td>DATE</td> </tr> <tr> <td></td> <td>0 PLACE \pm --- \pm ---</td> <td></td> <td>GPRATT</td> <td>05/05/08</td> <td></td> </tr> <tr> <td colspan="2">ANGULAR \pm 3°</td> <td></td> <td colspan="2">MATERIAL NO.</td> <td>DOCUMENT NO.</td> </tr> <tr> <td colspan="2">DRAFT WHERE APPLICABLE MUST REMAIN WITHIN DIMENSIONS</td> <td></td> <td colspan="2">SEE CHART</td> <td>SD-31387-080</td> </tr> </tbody> </table>		QUALITY SYMBOLS	GENERAL TOLERANCES (UNLESS SPECIFIED)	DIMENSION STYLE	DRAWN BY	DATE	TITLE	$\nabla=0$	4 PLACES \pm --- \pm ---	MM ONLY	FJAKLIC	04/30/08	80 CKT SHROUD ASSEMBLY 0.64 SQ. PINS MX123 molex	$\nabla=0$	3 PLACES \pm --- \pm ---		FJAKLIC	04/30/08	$\nabla=0$	2 PLACES \pm 0.13 \pm ---		FJAKLIC	04/30/08	$\nabla=0$	1 PLACE \pm 0.25 \pm ---		APPROVED BY	DATE		0 PLACE \pm --- \pm ---		GPRATT	05/05/08		ANGULAR \pm 3°			MATERIAL NO.		DOCUMENT NO.	DRAFT WHERE APPLICABLE MUST REMAIN WITHIN DIMENSIONS			SEE CHART		SD-31387-080			
QUALITY SYMBOLS	GENERAL TOLERANCES (UNLESS SPECIFIED)	DIMENSION STYLE	DRAWN BY	DATE	TITLE																																												
$\nabla=0$	4 PLACES \pm --- \pm ---	MM ONLY	FJAKLIC	04/30/08	80 CKT SHROUD ASSEMBLY 0.64 SQ. PINS MX123 molex																																												
$\nabla=0$	3 PLACES \pm --- \pm ---		FJAKLIC	04/30/08																																													
$\nabla=0$	2 PLACES \pm 0.13 \pm ---		FJAKLIC	04/30/08																																													
$\nabla=0$	1 PLACE \pm 0.25 \pm ---		APPROVED BY	DATE																																													
	0 PLACE \pm --- \pm ---		GPRATT	05/05/08																																													
ANGULAR \pm 3°			MATERIAL NO.		DOCUMENT NO.																																												
DRAFT WHERE APPLICABLE MUST REMAIN WITHIN DIMENSIONS			SEE CHART		SD-31387-080																																												
SEE REV COLUMN		SHEET NO. 1 OF 3																																															
LEC NO: UAU2014-0977		THIS DRAWING CONTAINS INFORMATION THAT IS PROPRIETARY TO MOLEX INCORPORATED AND SHOULD NOT BE USED WITHOUT WRITTEN PERMISSION																																															
DRAWN BY: CHYKDKRANICZYK 2014/01/15																																																	
APPR:DKRANICZYK 2014/01/15																																																	



SIGNAL PIN (3.25) TYP.
TIN MEASURE POINT
SEE NOTE 2b



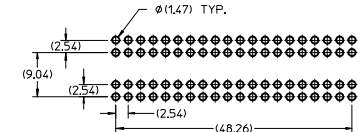
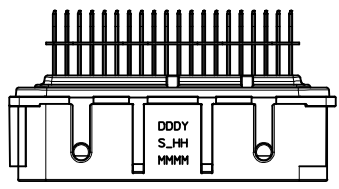
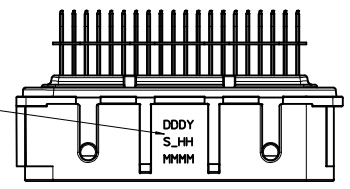
SECTION A-A
SCALE 5:1



SEE SHEET 1 EC NO: UAU2014-0977 DRAWING: 2014/01/15 CHK: OKRAMZYK 2014/01/15 APPR: OKRAMZYK 2014/01/15 REV: B9	QUALITY SYMBOLS	GENERAL TOLERANCES (UNLESS SPECIFIED)	DIMENSION STYLE	SCALE	DESIGN UNITS	THIRD ANGLE PROJECTION
	∇=4 ∇=3 ∇=0	4 PLACES ± --- + --- 3 PLACES ± --- + --- 2 PLACES ± 0.13 + --- 1 PLACE ± 0.25 + --- 0 PLACE ± --- + ---	MM ONLY DATE DATE DATE	2:1	METRIC	80 CKT SHROUD ASSEMBLY 0.64 SQ. PINS MX123
	ANGULAR ± 3 ° DRAFT WHERE APPLICABLE MUST REMAIN WITHIN DIMENSIONS	MATERIAL NO. DATE DATE DATE	SEE CHART DATE DATE DATE	80X 9.50±0.30 DATE DATE DATE	05/05/08 DATE DATE DATE	SD-31387-080 DATE DATE DATE
						moxle DOCUMENT NO. SD-31387-080 SHEET NO. 2 OF 3

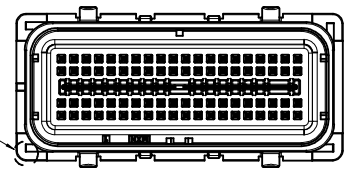
SHROUD ASSEMBLY NUMBER	MATE SIDE PIN FINISH	COLOR	HARNESS SIDE KEY CODE	PCB SIDE KEY LOCATION		MATING HARNESS PART NUMBER	STATUS
				DIM. "A" +0.30	DIM. "B" +0.30		
31387-4001	GOLD	BLUE	G	13.97	34.29	345660703 345661903	SALEABLE
31387-4009	GOLD	GRAY	H	19.05	34.29	345660803 345662003	SALEABLE
31387-4017	SILVER	BLUE	G	13.97	34.29	345660703 345661903	SALEABLE
31387-4018	SILVER	GRAY	H	19.05	34.29	345660803 345662003	SALEABLE

SHROUD ASSEMBLY TRACEABILITY INFORMATION FOR MOLEX INTERNAL USE ONLY (SEE NOTE 4a)

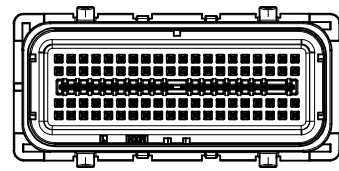


PCB LAYOUT FOR REFERENCE ONLY

MATE SIDE POLARIZATION KEY AT CORNERS

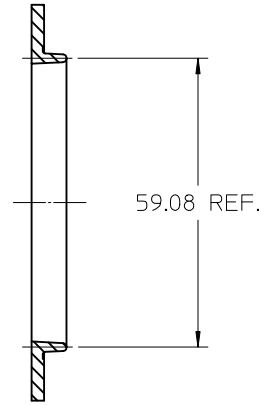
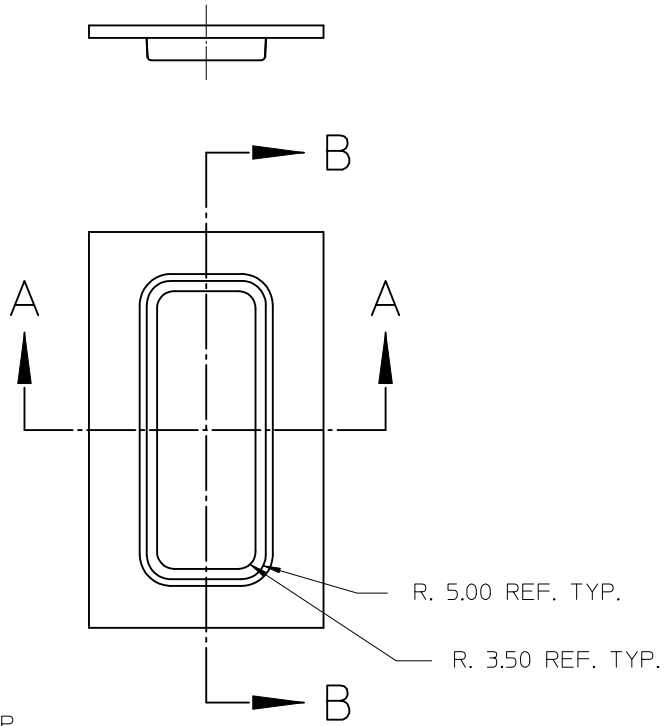
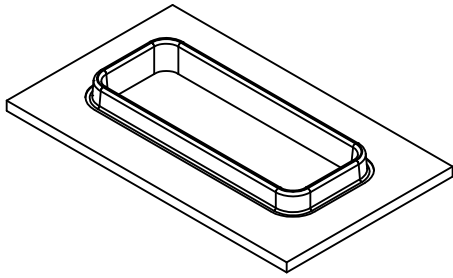


KEY OPTION "G"

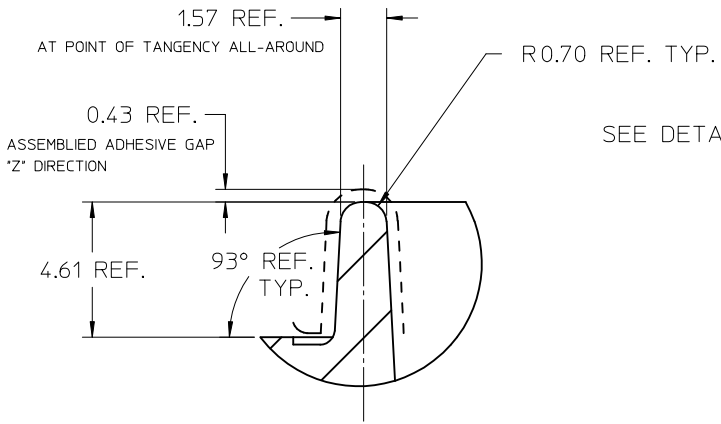


KEY OPTION "H"

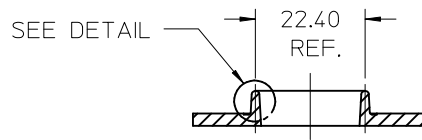
SEE SHEET 1 EEC NO: UAU2014-0977 DRAWN BY: DRYNADUNN 2014/01/15 CHECKED BY: CHYKDKRAMCZYK 2014/01/15 APPR: DKRAMCZYK 2014/01/15 REV: B9	QUALITY SYMBOLS	GENERAL TOLERANCES (UNLESS SPECIFIED)	DIMENSION STYLE	SCALE	DESIGN UNITS	THIRD ANGLE PROJECTION
	$\nabla=0$ $\nabla=0$ $\nabla=0$	4 PLACES ± mm ± INCH 3 PLACES ± --- ± --- 2 PLACES ± 0.13 ± --- 1 PLACE ± 0.25 ± --- 0 PLACE ± --- ± ---	MM ONLY	2:1	METRIC	
	ANGULAR ± 3 ° DRAFT WHERE APPLICABLE MUST REMAIN WITHIN DIMENSIONS	DRAWN BY: FJAKLIC DATE: 04/30/08 CHECKED BY: FJAKLIC DATE: 04/30/08 APPROVED BY: GPRATT DATE: 05/05/08	MATERIAL NO: SEE CHART	TITLE: 80 CKT SHROUD ASSEMBLY 0.64 SQ. PINS MX123	DOCUMENT NO: SD-31387-080	SHEET NO: 3 OF 3
	THIS DRAWING CONTAINS INFORMATION THAT IS PROPRIETARY TO MOLEX INCORPORATED AND SHOULD NOT BE USED WITHOUT WRITTEN PERMISSION					



SECTION B-B



DETAIL 6:1



SECTION A-A

ENTER DESCRIPTION EC NO: UAU2012-1624 DRAWN BY: DRW:DDUNN 2013/01/30 CHKD: JOUNAJ 2013/02/07 APPR: DKRAWCZYK 2013/02/19 REV B	QUALITY SYMBOLS ▽=0 ▽=0	GENERAL TOLERANCES (UNLESS SPECIFIED)		DIMENSION STYLE MM ONLY		SCALE 1:1	DESIGN UNITS METRIC	THIRD ANGLE PROJECTION	
			mm	INCH	DRAWN BY	DATE	TITLE		
			4 PLACES ±---	±---	F JAKLIC	11/21/2008	LARGE FOOTPRINT ADHESIVE TONGUE GEOMETRY		
			3 PLACES ±---	±---	CHECKED BY	DATE			
		2 PLACES ±---	±---	G PRATT	11/21/2008	MOLEX INCORPORATED			
		1 PLACE ±---	±---	APPROVED BY	DATE				
		ANGULAR ±---°		DKRAWCZYK	2013/02/19	DOCUMENT NO.		SHEET NO.	
DRAFT WHERE APPLICABLE MUST REMAIN WITHIN DIMENSIONS				MATERIAL NO.		SD-31387-173		1 OF 1	
				SIZE B		THIS DRAWING CONTAINS INFORMATION THAT IS PROPRIETARY TO MOLEX INCORPORATED AND SHOULD NOT BE USED WITHOUT WRITTEN PERMISSION			