



Chipsmall Limited consists of a professional team with an average of over 10 year of expertise in the distribution of electronic components. Based in Hongkong, we have already established firm and mutual-benefit business relationships with customers from,Europe,America and south Asia,supplying obsolete and hard-to-find components to meet their specific needs.

With the principle of "Quality Parts,Customers Priority,Honest Operation,and Considerate Service",our business mainly focus on the distribution of electronic components. Line cards we deal with include Microchip,ALPS,ROHM,Xilinx,Pulse,ON,Everlight and Freescale. Main products comprise IC,Modules,Potentiometer,IC Socket,Relay,Connector.Our parts cover such applications as commercial,industrial, and automotives areas.

We are looking forward to setting up business relationship with you and hope to provide you with the best service and solution. Let us make a better world for our industry!



## Contact us

Tel: +86-755-8981 8866 Fax: +86-755-8427 6832

Email & Skype: info@chipsmall.com Web: www.chipsmall.com

Address: A1208, Overseas Decoration Building, #122 Zhenhua RD., Futian, Shenzhen, China



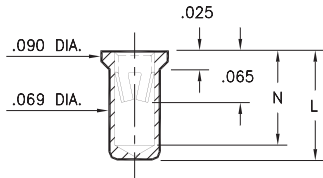
# PIN RECEPTACLES

FOR .037" - .043" DIAMETER PINS

## 0331/9353

**X3XX-0-15-XX-18-XX-10-0**

Solder mount in .071 min. mounting hole  
Also available on 24mm wide carrier tape:  
1,000 parts per 13" reel  
Order as: X3XX-0-57-XX-18-XX-10-0

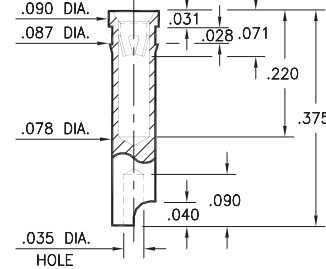


Basic Part Number	Length L	Depth N
0331-0	.150	.127
9353-0	.170	.147

## 7405

**7405-0-18-XX-18-XX-10-0**

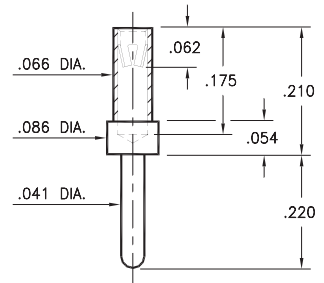
Press-fit in .084 mounting hole  
Accepts wire sizes up to .025" dia.



## 3450

**3450-0-15-XX-18-XX-04-0**

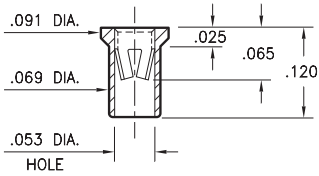
Solder mount in .043 min. mounting hole



## 7406

**7406-0-15-XX-18-XX-10-0**

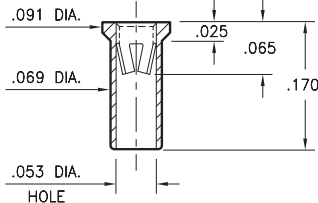
Solder mount in .071 min. mounting hole  
Also available on 16mm wide carrier tape:  
2,200 parts per 13" reel  
Order as: 7406-0-57-XX-18-XX-10-0



## 9354

**9354-0-15-XX-18-XX-10-0**

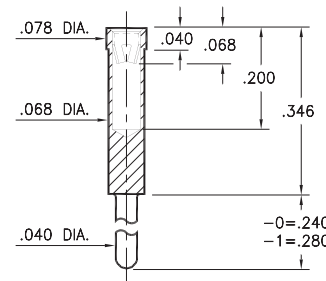
Solder mount in .071 min. mounting hole  
Also available on 12mm wide carrier tape:  
1,400 parts per 13" reel  
Order as: 9354-0-57-XX-18-XX-10-0



## 0319

**0319-X-15-XX-18-XX-04-0**

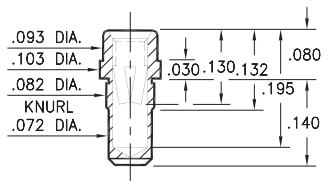
Solder mount in .042 min. mounting hole



## 9357

**9357-0-15-XX-18-XX-10-0**

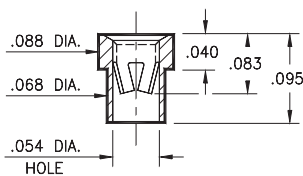
Press-fit in .078 mounting hole



## 3520

**3520-0-15-XX-18-XX-10-0**

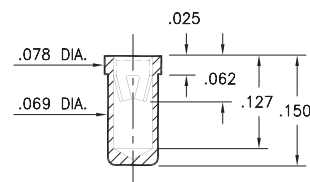
Solder mount in .070 min. mounting hole



## 8331

**8331-0-15-XX-18-XX-10-0**

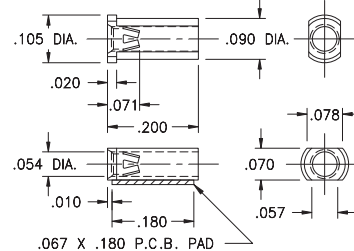
Solder mount in .071 min. mounting hole  
Also available on 16mm wide carrier tape:  
1,900 parts per 13" reel  
Order as: 8331-0-57-XX-18-XX-10-0



## 6628

**6628-0-18-XX-18-XX-10-0**

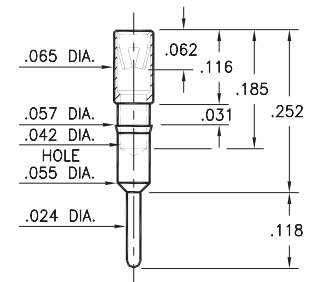
Surface mount  
Also available on 12mm wide carrier tape:  
3,700 parts per 13" reel  
Order as: 6628-0-58-XX-18-XX-10-0



## 1313

**1313-0-15-XX-18-XX-04-0**

Press-fit in .056 mounting hole



### SPECIFICATIONS:

**Shell Material:** Brass Alloy 360, 1/2 Hard

**Contact Material:** Beryllium Copper Alloy 172, HT

**Dimensions:** Inches

**Tolerances On:** Lengths: ±.005

Diameters: ±.002

Angles: ± 2°



**ORDER CODE:** XXXX - X - XX - XX - 18 - XX - XX - 0

**BASIC PART #**

**SPECIFY SHELL FINISH:**

01 200 μ" TIN/LEAD OVER NICKEL

◆ 80 200 μ" TIN OVER NICKEL (RoHS)

◆ 15 10 μ" GOLD OVER NICKEL (RoHS)

**SPECIFY CONTACT FINISH:**

01 200 μ" TIN/LEAD OVER NICKEL

◆ 80 200 μ" TIN OVER NICKEL (RoHS)

◆ 27 30 μ" GOLD OVER NICKEL (RoHS)

**SELECT CONTACT:**

#18 CONTACT (DATA ON PAGE 257)

(For alternate contact choices, see group L on page 248)

