



Chipsmall Limited consists of a professional team with an average of over 10 year of expertise in the distribution of electronic components. Based in Hongkong, we have already established firm and mutual-benefit business relationships with customers from,Europe,America and south Asia,supplying obsolete and hard-to-find components to meet their specific needs.

With the principle of “Quality Parts,Customers Priority,Honest Operation,and Considerate Service”,our business mainly focus on the distribution of electronic components. Line cards we deal with include Microchip,ALPS,ROHM,Xilinx,Pulse,ON,Everlight and Freescale. Main products comprise IC,Modules,Potentiometer,IC Socket,Relay,Connector.Our parts cover such applications as commercial,industrial, and automotives areas.

We are looking forward to setting up business relationship with you and hope to provide you with the best service and solution. Let us make a better world for our industry!



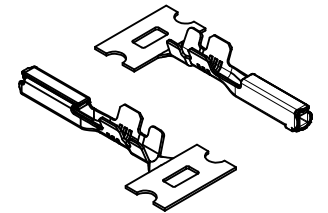
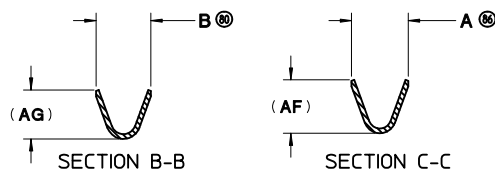
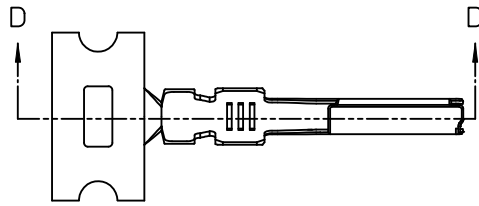
Contact us

Tel: +86-755-8981 8866 Fax: +86-755-8427 6832

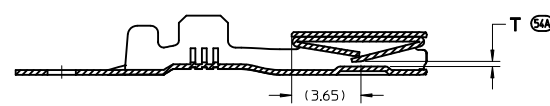
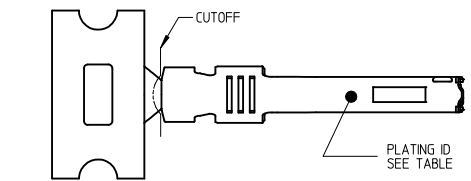
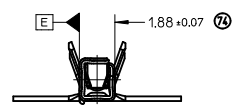
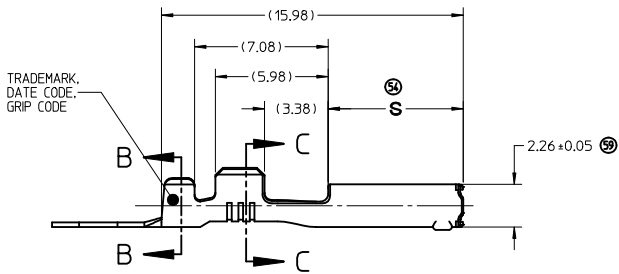
Email & Skype: info@chipsmall.com Web: www.chipsmall.com

Address: A1208, Overseas Decoration Building, #122 Zhenhua RD., Futian, Shenzhen, China

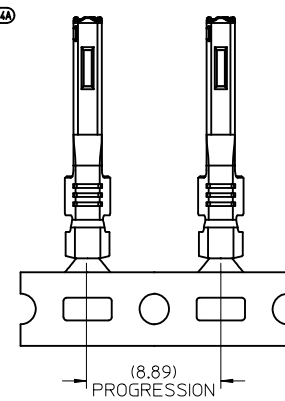




ISO VIEWS
SCALE 3:1



SECTION D-D



- NOTES: (UNLESS OTHERWISE SPECIFIED)
- MATERIALS: SEE TABLE
 - PACKAGING SPECIFICATION: PK-31300-516 AND PK-30907-759
 - CRIMPING PER APPLICATION SPECIFICATION AS-33468-001
 - CRIMPED LEAD MEETS THE FOLLOWING:
 - SAE/JCAR-21, MAY 2002
 - SAE/JCAR-2, REV. 3, APRIL 2001
 - SAE/JCAR-12, REV. 2
 - GMW #3191 AUGUST 22, 2000 (DRAFT) TEMPERATURE CLASS 3, APPLIES ONLY TO Au PARTS
 - GMW #3191 JANUARY, 2005 TEMPERATURE CLASS 3, APPLIES ONLY TO Ag PARTS
 - PLATING NOTES:
 - TIN PLATING (ENTIRE TERMINAL)
 - ELECTRO REFLOW 190 - 330 MICROMETERS TIN OVER 0.25 - 0.76 MICROMETERS NICKEL
 - GOLD PLATING
 - UNDERPLATE OVERALL 125-225 MICROMETERS DUCTILE SULPHAMATE NICKEL
 - ELECTRODEPOSITED GOLD 0.76 - 15 MICROMETERS IN CONTACT AREAS
 - ELECTRODEPOSITED TIN MATTE FINISH 2.5 - 4.0 MICROMETERS IN CRIMP AREA
 - SILVER PLATING
 - UNDERPLATE OVERALL 125-225 MICROMETERS DUCTILE SULPHAMATE NICKEL
 - ELECTRODEPOSITED PURE SILVER 99.5% PURITY SEMI-BRIGHT FINISH WITH NO BRIGHTENERS OR CHROMATES 1.9 - 3.3 MICROMETERS IN CONTACT AREAS
 - ANTI-TARNISH TREATMENT FOR SILVER PLATED AREA: SYNTHETIC HYDROCARBON CONTACT SURFACE FINISH OR EQUIVALENT
 - ELECTRODEPOSITED TIN MATTE FINISH 2.5 - 4.0 MICROMETERS IN CRIMP AREA

| WIRE SIZE | GRIP CODE | PART NUMBER | REEL PAYOFF DIRECTION | DM A | DM B | DM S | DM T | DM AF | DM AG | BASE MATERIAL | PLATING D |
|-----------|-----------|-------------|-----------------------|------|------|----------------|----------------|-------|-------|---------------|--------------|
| 22 AWG | A | 33468-0002 | D | 2.3 | 2.3 | 7.15 + 0.10 | 0.26 + 0.07 | (2.1) | (2.1) | COPPER ALLOY | Sn Lead Free |
| | | 33468-0001 | B | 2.3 | 2.3 | 6.97 7.27 | 0.26 + 0.07 | (2.1) | (2.1) | COPPER ALLOY | Au Lead Free |
| | | 33467-0004 | D | 2.3 | 2.3 | 6.97 7.27 | 0.26 + 0.07 | (2.1) | (2.1) | COPPER ALLOY | Au Lead Free |
| | | 33467-0003 | B | 2.3 | 2.3 | 6.97 7.27 | 0.26 + 0.07 | (2.1) | (2.1) | COPPER ALLOY | Ag Lead Free |
| | | 34736-2001 | D | 2.3 | 2.3 | 6.97 7.27 | 0.26 + 0.07 | (2.1) | (2.1) | COPPER ALLOY | Ag Lead Free |
| 18/20 AWG | B | 33468-0004 | D | 3.0 | 2.9 | 7.15 + 0.10 | 0.26 + 0.07 | (2.8) | (2.6) | COPPER ALLOY | Sn Lead Free |
| | | 33468-0003 | B | 3.0 | 2.9 | 6.97 7.27 | 0.26 + 0.07 | (2.8) | (2.6) | COPPER ALLOY | Au Lead Free |
| | | 33467-0006 | D | 3.0 | 2.9 | 6.97 7.27 | 0.26 + 0.07 | (2.8) | (2.6) | COPPER ALLOY | Au Lead Free |
| | | 33467-0005 | B | 3.0 | 2.9 | 6.97 7.27 | 0.26 + 0.07 | (2.8) | (2.6) | COPPER ALLOY | Au Lead Free |
| | | 34736-1002 | D | 3.0 | 2.9 | 6.97 7.27 | 0.26 + 0.07 | (2.8) | (2.6) | COPPER ALLOY | Ag Lead Free |

| | | | | | | |
|--|-----------------------|---------------------------------------|---|------------------------------|--------------|------------------------|
| ENTER DESCRIPTION IEC NO: UAU2012-0459 DRINKWATERGUSON 2011/09/28 CHKD: APPR:BMOSER 2011/11/01 REV: | QUALITY SYMBOLS | GENERAL TOLERANCES (UNLESS SPECIFIED) | DIMENSION STYLE | SCALE | DESIGN UNITS | THIRD ANGLE PROJECTION |
| | ▽=0 | mm INCH | MM ONLY | 5:1 | METRIC | |
| | ▽=0 | 4 PLACES ± --- ± --- | DRAWN BY DATE | TITLE | | |
| | ▽=0 | 3 PLACES ± --- ± --- | L. PULLIAM 2/3/2006 | MX64 SAE RECEPTACLE TERMINAL | | |
| | 2 PLACES ± 0.10 ± --- | CHECKED BY DATE | DOCUMENT NO. | | | |
| | 1 PLACE ± 0.3 ± --- | D. HEMNANI 2/3/2006 | MOLEX INCORPORATED | | | |
| | ANGULAR ± 3 ° | APPROVED BY DATE | SD-33468-001 | | | |
| | | B. MOSER 2/3/2006 | SHEET NO. | | | |
| | | | 1 OF 1 | | | |
| | | | THIS DRAWING CONTAINS INFORMATION THAT IS PROPRIETARY TO MOLEX INCORPORATED AND SHOULD NOT BE USED WITHOUT WRITTEN PERMISSION | | | |