



Chipsmall Limited consists of a professional team with an average of over 10 year of expertise in the distribution of electronic components. Based in Hongkong, we have already established firm and mutual-benefit business relationships with customers from,Europe,America and south Asia,supplying obsolete and hard-to-find components to meet their specific needs.

With the principle of "Quality Parts,Customers Priority,Honest Operation,and Considerate Service",our business mainly focus on the distribution of electronic components. Line cards we deal with include Microchip,ALPS,ROHM,Xilinx,Pulse,ON,Everlight and Freescale. Main products comprise IC,Modules,Potentiometer,IC Socket,Relay,Connector.Our parts cover such applications as commercial,industrial, and automotives areas.

We are looking forward to setting up business relationship with you and hope to provide you with the best service and solution. Let us make a better world for our industry!



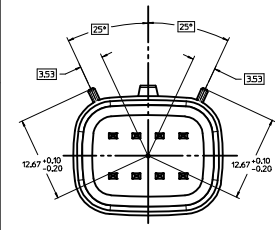
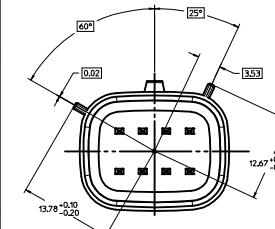
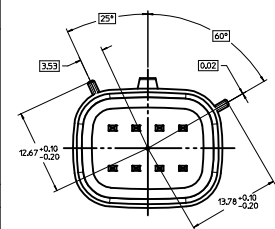
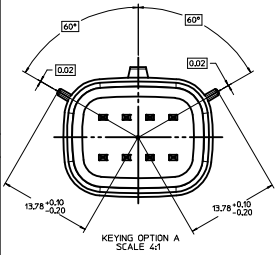
## Contact us

Tel: +86-755-8981 8866 Fax: +86-755-8427 6832

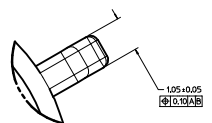
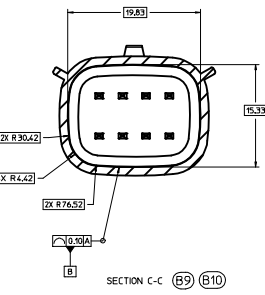
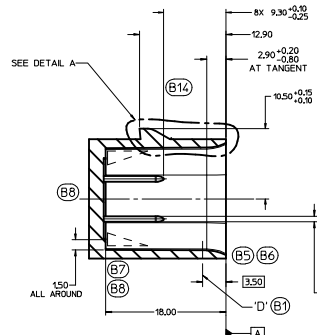
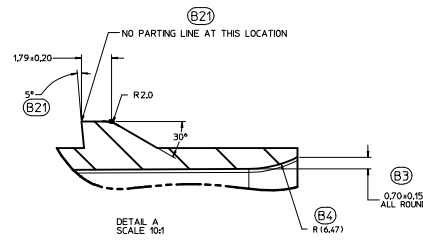
Email & Skype: info@chipsmall.com Web: www.chipsmall.com

Address: A1208, Overseas Decoration Building, #122 Zhenhua RD., Futian, Shenzhen, China



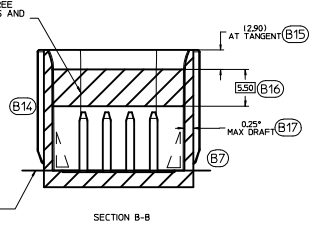
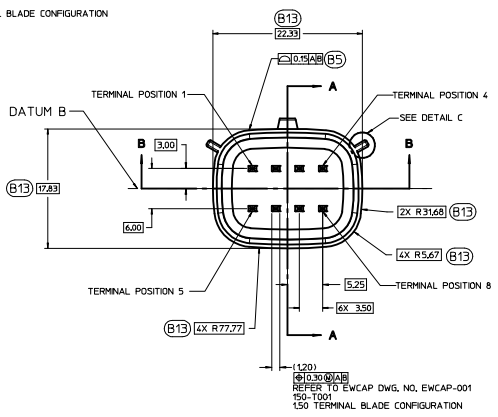
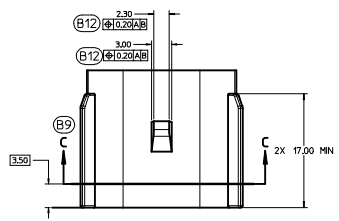
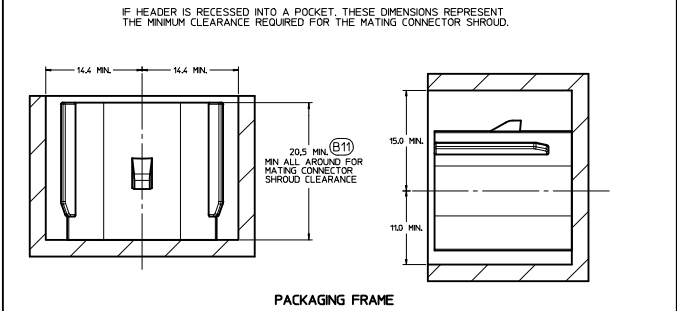


| EWCAP P/N       | OPTION | MATING CONNECTOR |
|-----------------|--------|------------------|
| 150-S-008-2-002 | D      | BLACK            |
| 150-S-008-2-002 | C      | DK GRAY          |
| 150-S-008-2-802 | B      | LT GRAY          |
| 150-S-008-2-A02 | A      | BLACK            |



DETAIL C SCALE 20:1  
APPLICABLE TO ALL KEYING OPTION VIEWS FOR POSITIONS

CONSTRUCTION BELOW THIS SURFACE IS NOT CONTROLLED BY EWCAP. NO PLASTIC FEATURES MAY EXTEND ABOVE THIS SURFACE.

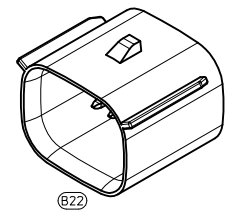


IF HEADER IS RECESSED INTO A POCKET, THESE DIMENSIONS REPRESENT THE MINIMUM CLEARANCE REQUIRED FOR THE MATING CONNECTOR SHROUD.

NOTICE  
THIS DRAWING OR PORTIONS OF IT, ARE CONTROLLED BY THE ELECTRICAL WIRING COMPONENTS APPLICATION PARTNERSHIP (EWCAP), A SUBGROUP OF THE UNITED STATES CONSORTIUM FOR AUTOMOTIVE RESEARCH LLC (USCAR). USCAR IS A PARTNERSHIP BETWEEN CHRYSLER GROUP LLC, FORD MOTOR COMPANY, AND GENERAL MOTORS CORPORATION ANY CHANGE TO A EWCAP CONTROLLED PORTION OF THIS DRAWING, INCLUDING A "RECORD CHANGE" MUST BE APPROVED, IN WRITING, BY THE RESPONSIBLE EWCAP MEMBER FROM EACH USCAR COMPANY. EACH EWCAP MEMBER AUTHORIZED TO SIGN FOR HIS OR HER COMPANY IS RESPONSIBLE FOR OBTAINING ALL NECESSARY APPROVALS WITHIN THAT COMPANY PRIOR TO SIGNING FOR APPROVAL OF THE CHANGE. EWCAP EXPRESSLY PROHIBITS ANY PARTY FROM CHANGING EITHER ANY EWCAP CONTROLLED PORTION OF THIS DRAWING OR ANY ASSOCIATED TOOLING BEFORE RECEIVING AN APPROVAL SIGNED BY AN AUTHORIZED REPRESENTATIVE FROM EACH EWCAP PARTNER. REFERENCE TO THE SIGNED APPROVAL FORM MUST BE ENTERED IN THIS DRAWING'S CONTROL COLUMN.

NOTES: UNLESS OTHERWISE SPECIFIED (B18)

- ALL DIMENSIONS SHOWN IN MILLIMETERS.
- DIMENSIONING AND TOLERANCING PER ASME Y14.5M-1994
- 0.25 RADI ON ALL CORNERS SHOWN SHARP.
- UNSPECIFIED RADI: 0.25 EXCEPT AS NOTED.
- STANDARD COLORS FOR POLARIZATION (SEE CHART). DEVIATION REQUIRES APPROVAL OF AUTHORIZED PERSON.
- REFER TO "SAE/USCAR 12 CONNECTOR GUIDELINES" FOR ADDITIONAL REQUIREMENTS.
- EXCEPT WHERE NOTED, DRAFT ON OUTSIDE SURFACES IS PERMISSIBLE WITHIN TOLERANCE.
- SYMBOL INDICATES DRAFT DIRECTION.
- FOR TERMINAL MATERIAL DIMENSIONAL AND COATING REQUIREMENTS AND ANY BLADE TERMINAL DESIGN INFORMATION NOT SHOWN ON THIS DRAWING SEE EWCAP DRW. NO. EWCAP-001
- A FULL SHROUD ON THE MATING CONNECTOR IS REQUIRED TO INSURE THAT THE CONNECTOR-HEADER POLARIZATION FEATURES OPTIONS A THRU D WILL FUNCTION. THE FULL SHROUD ALSO PREVENTS SCOPING DAMAGE TO THE HEADER PINS. REFER TO "SAE/USCAR-12 CONNECTOR DESIGN GUIDE LINES" FOR ADDITIONAL INFORMATION.
- REFER TO USCAR/EWCAP PART LIST AS FOUND ON WEBSITE <http://www.uscarcorp.com>
- THIS IS A 100% CAD GENERATED PART. THE CAD MATHEMATICAL DATA IS THE MASTER FOR THIS PART. FOR DIMENSIONAL OR ANY INFORMATION NOT SHOWN ON THIS DRAWING, ANALYZE THE CAD MODEL.



| REV | DATE | BY | CHK | DESCRIPTION   |
|-----|------|----|-----|---|
| 095 | B22  |    |     | CHANGED ISO VIEW SCALE TO 4:1 WAS 1:1                         |
| 095 | B21  |    |     | ADDED PARTING LINE NOTE TO DETAIL A. DIM. 14.4 MIN. 14.4 MIN. |
| 095 | B20  |    |     | CORRECTED CHRYSLER GROUP LLC NOMENCLATURE                     |
| 095 | B19  |    |     | MOVED NOTE TO SECTION B-B                                     |
| 095 | B18  |    |     | UPDATED NOTES   |
| 095 | B17  |    |     | REMOVED 15.20 AND 2.50 FROM SECTION A-A                       |
| 095 | B16  |    |     | ADDED (3.50)  |
| 095 | B15  |    |     | ADDED AT TANGENT NOTE   |
| 095 | B14  |    |     | REMOVED DATUM D   |
| 095 | B13  |    |     | ADDED BASIC DIMENSIONS FOR PROFILE CONTROL                    |
| 095 | B12  |    |     | ADDED (0.10 ±0.02)  |
| 095 | B11  |    |     | DIMENSIONED TO DATUM A  |
| 095 | B10  |    |     | SEALING SURFACE DIMENSIONS MOVED TO SECTION C-C               |
| 095 | B9   |    |     | ADDED SECTION C-C   |
| 095 | B8   |    |     | REMOVED 15.20 AND 2.50 FROM SECTION A-A                       |
| 095 | B7   |    |     | ADDED DRAFT ANGLE DIRECTION                                   |
| 095 | B6   |    |     | REMOVED 0.20 ±0.10 ±0.20 ALL AROUND                           |
| 095 | B5   |    |     | REPLACED WALL THICKNESS CONTROL WITH DRAFFLE OF A SURFACE     |
| 095 | B4   |    |     | ADDED R16.47  |
| 095 | B3   |    |     | ADDED 0.70 ±0.15 ALL AROUND                                   |
| 095 | B2   |    |     | UPDATED CONNECTOR COLORS                                      |
| 095 | B1   |    |     | SURFACE 17 RELOCATED TO (3.50) WAS AT 8.20                    |
| 095 | A    |    |     | RELEASED  |

| DATE     | BY | CHK | DESCRIPTION |
|----------|----|-----|-------------|
| 03-21-12 | KC | MV  |             |
| 10-17-07 | MV | DG  |             |

| SCALE | DRAWN BY      | CHECKED BY      | DATE     |
|-------|---------------|-----------------|----------|
| 4:1   | K. LUNNINGHAM | M. ANSLAMBROUCK | 03-21-12 |

| REV   | DATE | BY | CHK | DESCRIPTION                                  |
|-------|------|----|-----|--|
| 10F-1 |      | E  |     | DO NOT SCALE DRAWING CONTENTS AND DIMENSIONS |

**EWCAP**

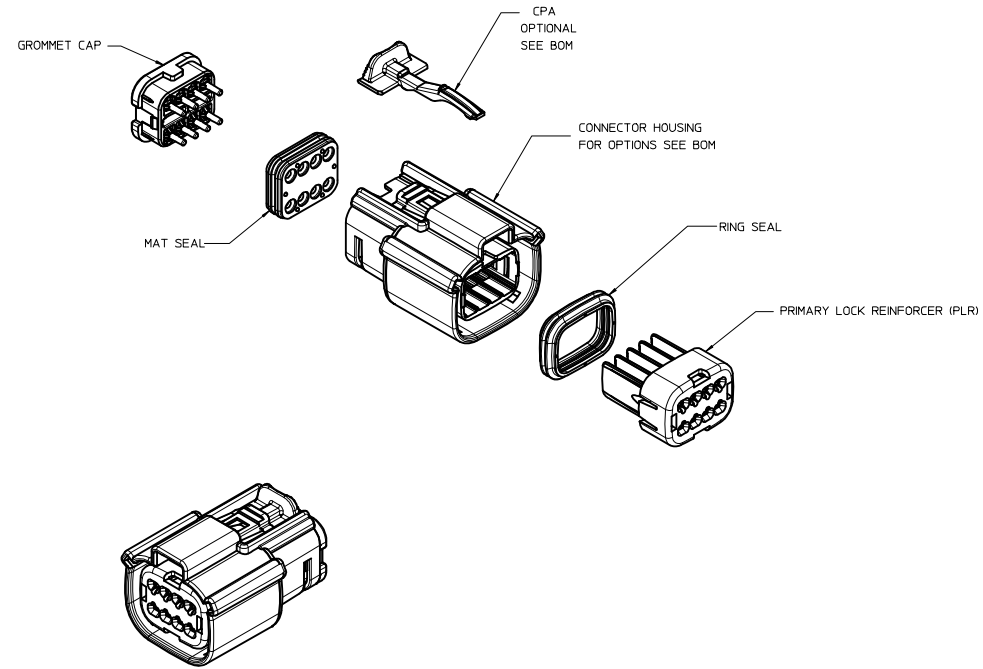
MOLEX

DIRECT CONNECT INTERFACE  
8 WAY (2 X 4) 1.5 MM SEALED MALE

SCALE 4:1 DRAWN BY K. LUNNINGHAM CHECKED BY M. ANSLAMBROUCK DATE 03-21-12

REV 10F-1 DATE 150-S-008-2-202 BY E

| TABLE OF CONTENTS |                                 |
|-------------------|---------------------------------|
| SHEET NO.         | SHEET DESCRIPTION               |
| 1                 | NOTES                           |
| 2                 | KEY CONFIGURATIONS              |
| 3                 | RECEPTACLE SEALED ASSEMBLY      |
| 4                 | WIRE DRESS COVER NOTES          |
| 5                 | WIRE DRESS COVER                |
| 6                 | WIRE DRESS COVER CONFIGURATIONS |
| 7-9               | BOM                             |



NOTES: VALID UNLESS OTHERWISE SPECIFIED

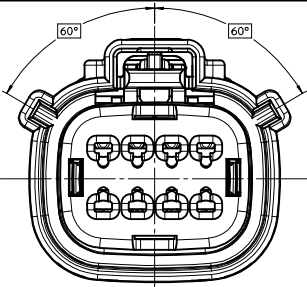
1. GENERAL:
  - a. APPLICATION SPECIFICATION SEE: AS-33472-100
    - CONTAINS: PRODUCT INTRODUCTION, PRODUCT SUMMARY, CONNECTOR ASSEMBLY, PACKAGING INFORMATION, CONNECTOR MATING, SERVICE INSTRUCTIONS, ELECTRICAL CONTINUITY CHECKING, CRIMPING, AND TROUBLESHOOTING.
    - DESIGNED TO MATE WITH DEVICE CONNECTION AS SPECIFIED IN DRAWING EWCAP 150-S-008-2-Z02, AVAILABLE AT <http://ewcap.uscarteams.org/>.
    - DESIGNED TO MATE WITH BLADE SEALED ASSEMBLY AS SPECIFIED IN DRAWING SD-33482-081
    - FOR 15mm RECEPTACLE TERMINALS TO BE USED WITH THIS ASSEMBLY, SEE MOLEX DRAWING SD-33012-002.
    - SYSTEM TO BE USED WITH WIRE WITHIN DIAMETER RANGE OF 1.2mm TO 2.69mm.
    - ASSEMBLY SHIPPED WITH PLR AND CPA IN PRE-LOCK POSITION (SEE SECTION Z-Z PRE-LOCK).
    - IN THE EVENT THAT THE PLR IS FOUND IN THE SEATED (FINAL LOCK) POSITION, REFER TO MOLEX SPECIFICATION PS-34646-001, AVAILABLE AT www.molex.com <http://www.molex.com>.
    - ASSEMBLY CONFORMS TO SAE/USCAR-2 REV.4 WITH THE FOLLOWING EXCEPTIONS:
      - ENGAGEMENT FORCE TO MOVE CPA FROM PRE-LOCK TO FINAL LOCK POSITION WHEN UNMATED: 40N MIN.
      - DISENGAGEMENT FORCE TO MOVE CPA FROM FINAL LOCK TO PRE-LOCK POSITION: 3N MIN, 40N MAX
      - TERMINAL INSERTION FORCE FOR WIRE DIAMETER ABOVE 2.5mm NOT EXCEEDING 2.69mm SHALL NOT EXCEED 40 NEWTONS.
      - PLR REMOVAL FROM FINAL LOCK TO PRE-LOCK POSITION SHALL NOT EXCEED 130 NEWTONS.
  - b. PRODUCT SPECIFICATION SEE: PS-33472-000
    - CONTAINS: PRODUCT INTRODUCTION, PRODUCT SUMMARY, RATINGS (CURRENT, TEMPERATURE, SEALING, AND FLAMMABILITY), AND PRODUCT VALIDATION.
  - c. PACKAGING SPECIFICATION PER MOLEX DRAWING: PK-31300-903
  - d. PARTS MUST BE IN COMPLIANCE TO MOLEX CHEMICAL SUBSTANCES FOR PRODUCTS AND PACKAGING SPECIFICATION: ES-40000-5016
  - e. DATA MUST BE SUBMITTED UNDER THE MOLEX PART NUMBER TO IMDS (COMPANY ID#13255)
  - f. FOR INFORMATION ON 2X4 RECEPTACLE SEALED ASSEMBLY WITH CLIPSLOT SEE SD-33472-091
2. DESIGN - MATERIALS:
  - a. SEE BOM TABLE
3. DESIGN - GEOMETRY:
  - a. THIS IS A 100% CAD GENERATED PART. THE CAD MATHEMATICAL DATA IS THE MASTER FOR THIS PART. FOR DIMENSIONAL OR ANY INFORMATION NOT SHOWN ON THIS DRAWING, ANALYZE THE CAD MODEL.
  - b. GEOMETRIC DIMENSIONS AND TOLERANCES PER ASME Y14.5M - 1994
  - c. EDGES AND UNDIMENSIONED DETAILS PER ISO13715
  - d. CORNERS SHOWN AS SHARP TO BE R 0.2 MAX.
  - e. LETTERING SHALL BE 0.15 MAX RAISED IN 0.25 MAX RECESS PAD. THIS INCLUDES RECYCLING CODE, CAVITY ID, VENDOR IDENTIFICATION, AND CUSTOMER MATERIAL NUMBER.
  - f. VISUAL DEFECTS SHALL MEET COSMETIC STANDARD PS-45499-002 (Class B).
  - g. LASER MARKING: TBD

INSPECTION NUMBERR LOG  
 LAST NUMBER USED:  
 ADDED:  
 REMOVED:

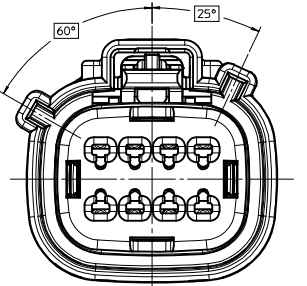
|     |  |
|-----|--|
| Y4  | ADD NEW P/N 33472-0897                                 |
|     | UPDATED 33472-0803 33472-0804<br>33472-0808 33472-0809 |
| Y3  | PRODUCTION STATUS                                      |
|     | ADD NEW P/N 33472-0895 33472-0896                      |
| Y2  | UPDATED NOMENCLATURE ON SHEET 3                        |
| Y1  | ADD NEW P/N 33472-0894                                 |
| Y   | REDRAWN, ADDED WIRE DRESS COVER                        |
| REV | DESCRIPTION  |

|   |                 |  |                      |   |              |                        |
|---|-----------------|--|----------------------|---|--------------|------------------------|
| ENTER DESCRIPTION<br>EEC NO: UAU2013-1018<br>DRAWN BY: 2013/01/04<br>CHKD: Y4<br>APPR: WKOSHY<br>2013/01/16 | QUALITY SYMBOLS | GENERAL TOLERANCES (UNLESS SPECIFIED)                | DIMENSION STYLE      | SCALE   | DESIGN UNITS | THIRD ANGLE PROJECTION |
|   | ▽=0             | 4 PLACES ± ---                                       | mm INCH              | 2:1   | METRIC       | ☉                      |
|   | ▽=0             | 3 PLACES ± ---                                       |                      |   |              |                        |
|   | ▽=0             | 2 PLACES ± 0.10                                      |                      |   |              |                        |
|   |                 | ANGULAR ± 3 °  | DRAWN BY DATE        | TITLE   |              |                        |
|   |                 | DRAFT WHERE APPLICABLE MUST REMAIN WITHIN DIMENSIONS | D. MARCOUX 06-13-02  | MX150 2X4 RECEPTACLE SEALED ASSEMBLY MAT SEAL   |              |                        |
|   |                 |  | CHECKED BY DATE      | molex   |              |                        |
|   |                 |  | DGRIFFI THS 06-13-02 | DOCUMENT NO. SD-33472-081   |              |                        |
|   |                 |  | APPROVED BY DATE     | SHEET NO. 1 OF 9  |              |                        |
|   |                 |  | FHOLUB 06-13-02      | THIS DRAWING CONTAINS INFORMATION THAT IS PROPRIETARY TO MOLEX INCORPORATED AND SHOULD NOT BE USED WITHOUT WRITTEN PERMISSION |              |                        |

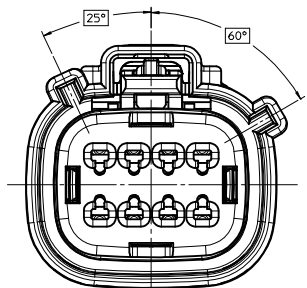
KEY CONFIGURATIONS



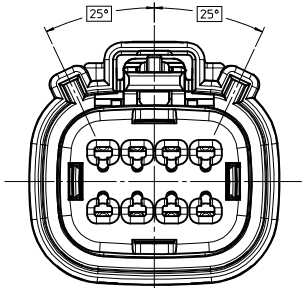
KEY A



KEY B



KEY C



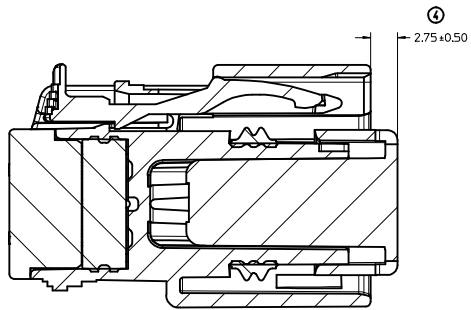
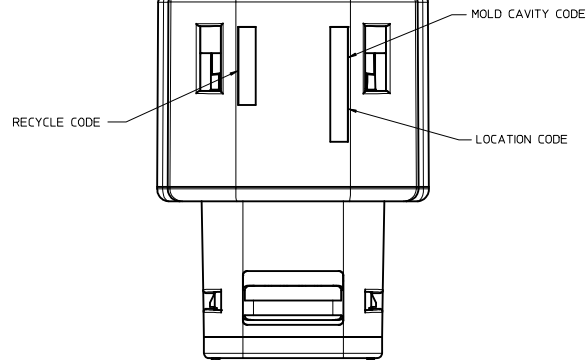
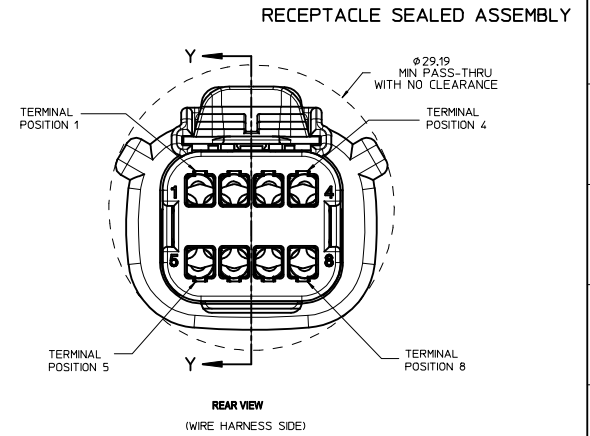
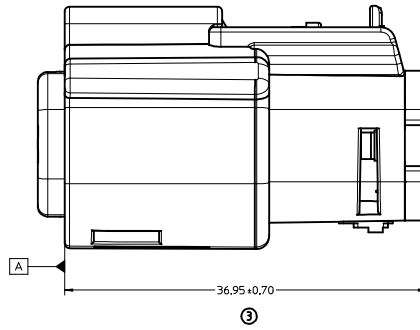
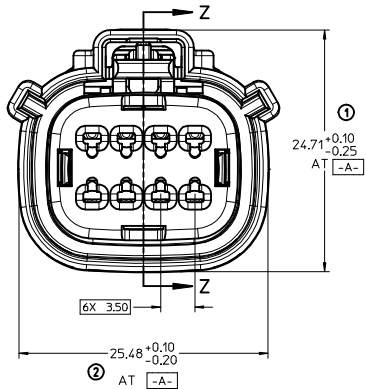
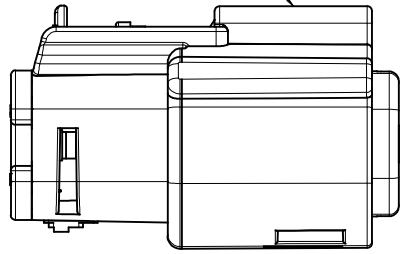
KEY D

|  |                 |  |   |       |              |                        |  |
|--|-----------------|--|---|-------|--------------|------------------------|--|
| ENTER DESCRIPTION<br>SEC NO: UAU2013-1018<br>DRAWN BY<br>CHKD:<br>APPR: WOSHY<br>2013/01/16<br>2013/01/16<br>74<br>REV | QUALITY SYMBOLS | GENERAL TOLERANCES (UNLESS SPECIFIED)                | DIMENSION STYLE   | SCALE | DESIGN UNITS | THIRD ANGLE PROJECTION |  |
|  | ▽=0             | 4 PLACES ± .005                                      | MM ONLY   | 4:1   | METRIC       |                        |  |
|  | ▽=0             | 3 PLACES ± .005                                      |   |       |              |                        |  |
|  | ▽=0             | 2 PLACES ± 0.10                                      |   |       |              |                        |  |
|  |                 | 1 PLACE ± 0.3  |   |       |              |                        |  |
|  |                 | 0 PLACE ±  |   |       |              |                        |  |
|  |                 | ANGULAR ± 3°   |   |       |              |                        |  |
|  |                 | DRAFT WHERE APPLICABLE MUST REMAIN WITHIN DIMENSIONS |   |       |              |                        |  |
|  |                 |  | MATERIAL NO.  |       | DOCUMENT NO. | SHEET NO.              |  |
|  |                 |  | SEE BOM   |       | SD-33472-081 | 2 OF 9                 |  |
|  |                 |  | THIS DRAWING CONTAINS INFORMATION THAT IS PROPRIETARY TO MOLEX INCORPORATED AND SHOULD NOT BE USED WITHOUT WRITTEN PERMISSION |       |              |                        |  |

TITLE  
 MX150 2X4 RECEPTACLE  
 SEALED ASSEMBLY  
 MAT SEAL

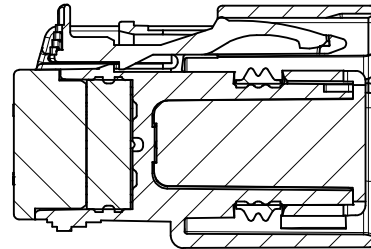


LASER MARKING ON THIS SURFACE  
SEE NOTE 3g.



PRIMARY LOCK REINFORCEMENT (PLR) SHOWN  
IN PRE-STAGED POSITION

SECTION Z-Z



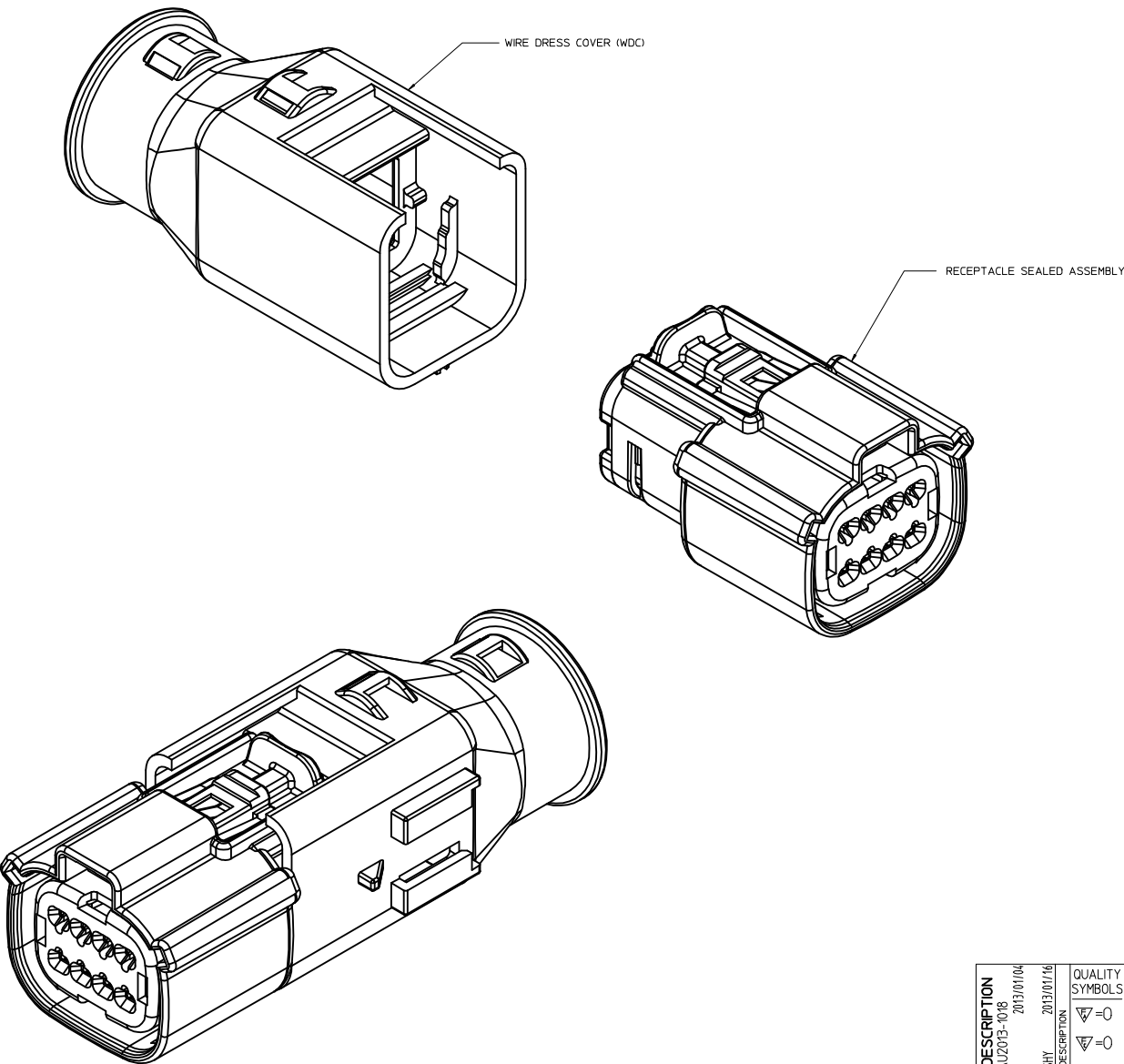
PRIMARY LOCK REINFORCEMENT (PLR) SHOWN  
IN FINAL-LOCK POSITION

SECTION Y-Y

|  |   |   |                              |  |                        |                        |
|--|---|---|------------------------------|--|------------------------|------------------------|
| <b>ENTER DESCRIPTION</b><br>ELEC NO: UAU2013-1018<br>DRAWN BY: CHYD<br>CHYD<br>APPR: IKOSHY<br>2013/01/16<br>REV 4 | QUALITY SYMBOLS<br>∇=0<br>∇=0<br>∇=0  | GENERAL TOLERANCES (UNLESS SPECIFIED)<br>mm INCH<br>4 PLACES +--- +---<br>3 PLACES +--- +---<br>2 PLACES +0.10 +---<br>1 PLACE +0.3 +---<br>0 PLACE ± ± | DIMENSION STYLE<br>MM ONLY   | SCALE<br>4:1   | DESIGN UNITS<br>METRIC | THIRD ANGLE PROJECTION |
|  | DRAWN BY: D. MARCOUX<br>DATE: 06-13-02<br>CHECKED BY: D. GRIFFITHS<br>DATE: 06-13-02<br>APPROVED BY: F. HOLUB<br>DATE: 06-13-02 | MATERIAL NO.<br>SEE BOM   | DOCUMENT NO.<br>SD-33472-081 | TITLE<br>MX150 2X4 RECEPTACLE<br>SEALED ASSEMBLY<br>MAT SEAL | SHEET NO.<br>3 OF 9    |                        |
|  | DRAFT WHERE APPLICABLE MUST REMAIN WITHIN DIMENSIONS  |   |                              |  |                        |                        |
|  | THIS DRAWING CONTAINS INFORMATION THAT IS PROPRIETARY TO MOLEX INCORPORATED AND SHOULD NOT BE USED WITHOUT WRITTEN PERMISSION   |   |                              |  |                        |                        |



WIRE DRESS COVER NOTES



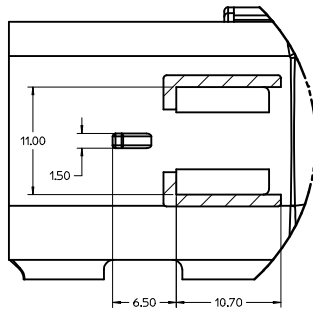
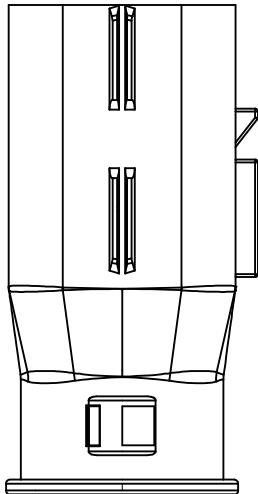
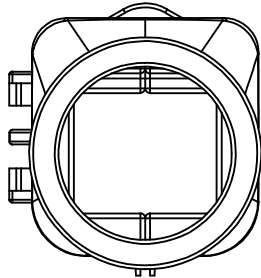
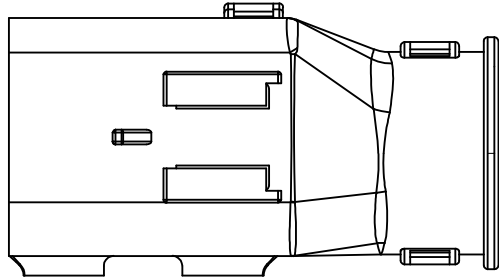
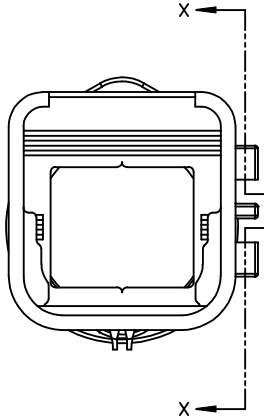
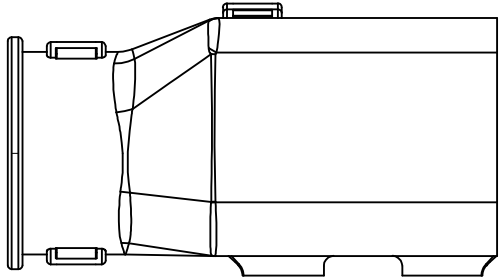
WIRE DRESS COVER NOTES: VALID UNLESS OTHERWISE SPECIFIED

1. GENERAL:
  - a. APPLICATION SPECIFICATION SEE: AS-\*\*\*\*\*TBD\*\*\*\*\*
    - DESIGNED TO MATE WITH RECEPTACLE SEALED ASSEMBLY SPECIFIED IN MOLEX DRAWING SD-33472-081.
    - SYSTEM TO BE USED WITH WIRE WITHIN DIAMETER RANGE OF TBDmm TO TBDmm.
    - COMPONENTS ARE OPTIONAL AND MUST BE PURCHASED SEPARATELY
    - WIRE DRESS COVER DESIGN IS OWNED BY SCHLEMMER
  - b. PRODUCT SPECIFICATION SEE: PS-\*\*\*\*\*TBD\*\*\*\*\*
  - c. PACKAGING SPECIFICATION PER MOLEX DRAWING: PK-\*\*\*\*\*TBD\*\*\*\*\*
  - d. PARTS MUST BE IN COMPLIANCE TO MOLEX CHEMICAL SUBSTANCES FOR PRODUCTS AND PACKAGING SPECIFICATION: ES-40000-5016
  - e. DATA MUST BE SUBMITTED UNDER THE MOLEX PART NUMBER TO IMDS (COMPANY ID=13255)
2. DESIGN - MATERIALS:
  - a. PA66 0% GLASS FILLED
  - b. BLACK
3. DESIGN - GEOMETRY:
  - a. THIS IS A 100% CAD GENERATED PART. THE CAD MATHEMATICAL DATA IS THE MASTER FOR THIS PART. FOR DIMENSIONAL OR ANY INFORMATION NOT SHOWN ON THIS DRAWING, ANALYZE THE CAD MODEL.
  - b. GEOMETRIC DIMENSIONS AND TOLERANCES PER ASME Y14.5M - 2009
  - c. EDGES AND UNDIMENSIONED DETAILS PER ISO13715
  - d. CORNERS SHOWN AS SHARP TO BE R 0.2 MAX.
  - e. VISUAL DEFECTS SHALL MEET COSMETIC STANDARD PS-45499-002 (Class B).

|  |                       |                                       |   |   |              |                        |           |
|--|-----------------------|---------------------------------------|---|---|--------------|------------------------|-----------|
| ENTER DESCRIPTION<br>EEC NO: UAU2013-1018<br>DRAWN BY: Y4<br>CHKD:<br>APPR: WKSHY<br>2013/01/04<br>2013/01/16<br>DESCRIPTION | QUALITY SYMBOLS       | GENERAL TOLERANCES (UNLESS SPECIFIED) | DIMENSION STYLE   | SCALE   | DESIGN UNITS | THIRD ANGLE PROJECTION |           |
|  | ▽=0                   | mm INCH                               | MM ONLY   | 4:1   | METRIC       | ☉                      |           |
|  | ▽=0                   | 4 PLACES # --- # ---                  | DRAWN BY DATE   | TITLE   |              |                        |           |
|  | ▽=0                   | 3 PLACES # --- # ---                  | D. MARCOUX 06-13-02   | MX150 2X4 RECEPTACLE SEALED ASSEMBLY MAT SEAL |              |                        |           |
|  | 2 PLACES # 0.10 # --- | CHECKED BY DATE                       | MATERIAL NO.  |   |              | DOCUMENT NO.           | SHEET NO. |
|  | 1 PLACE # 0.3 # ---   | D. GRIFFITHS 06-13-02                 | SEE BOM   |   |              | SD-33472-081           | 4 OF 9    |
|  | 0 PLACE # #           | APPROVED BY DATE                      | THIS DRAWING CONTAINS INFORMATION THAT IS PROPRIETARY TO MOLEX INCORPORATED AND SHOULD NOT BE USED WITHOUT WRITTEN PERMISSION |   |              |                        |           |
|  |                       | F. HOLUB 06-13-02                     |   |   |              |                        |           |

20 19 18 17 16 15 14 13 12 11 10 9 8 7 6 5 4 3 2 1

WIRE DRESS COVER



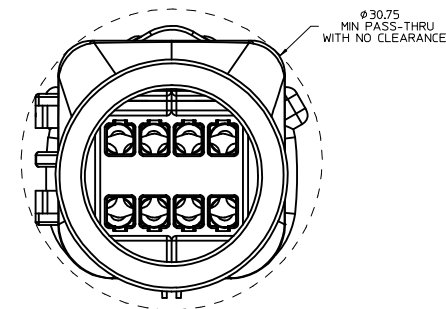
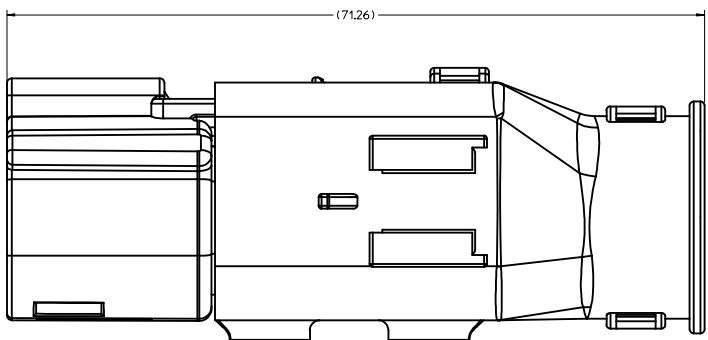
Partial X-X  
SCALE 4:1

|   |   |  |   |                  |              |  |
|---|---|--|---|------------------|--------------|--|
| <b>ENTER DESCRIPTION</b><br>DEC NO: UAU2013-1018<br>DRAWN BY: CHYK<br>CHKD: APPR: WKSHY<br>DATE: 2013/01/04<br>DESCRIPTION: | QUALITY SYMBOLS   | GENERAL TOLERANCES (UNLESS SPECIFIED)  | DIMENSION STYLE   | SCALE            | DESIGN UNITS | THIRD ANGLE PROJECTION   |
|   | ∇=0<br>∇=0<br>∇=0   | mm INCH<br>4 PLACES ± --- ± ---<br>3 PLACES ± --- ± ---<br>2 PLACES ± 0.10 ± ---<br>1 PLACE ± 0.3 ± ---<br>0 PLACE ± ± | MM ONLY   | 4:1              | METRIC       | DRAWN BY: D. MARCOUX DATE: 06-13-02<br>CHECKED BY: D. GRIFFITHS DATE: 06-13-02<br>APPROVED BY: F. HOLUB DATE: 06-13-02 |
|   | ANGULAR ± 3 °<br>DRAFT WHERE APPLICABLE MUST REMAIN WITHIN DIMENSIONS   | MATERIAL NO: SEE BOM<br>SIZE: D  | TITLE: MX150 2X4 RECEPTACLE SEALED ASSEMBLY MAT SEAL<br>DOCUMENT NO: SD-33472-081 | SHEET NO: 5 OF 9 |              |  |
|   | THIS DRAWING CONTAINS INFORMATION THAT IS PROPRIETARY TO MOLEX INCORPORATED AND SHOULD NOT BE USED WITHOUT WRITTEN PERMISSION |  |   |                  |              |  |

19 18 17 16 15 14 13 12 11 10 9 8 7 6 5 4 3 2 1

20 19 18 17 16 15 14 13 12 11 10 9 8 7 6 5 4 3 2 1

WIRE DRESS COVER CONFIGURATIONS



RECEPTACLE SEALED ASSEMBLY WITH RECEPTACLE WIRE DRESS COVER

| <b>ENTER DESCRIPTION</b><br>EEC NO: UAU2013-1018<br>DRAWN BY: Y4<br>CHKD: APPR: WKSHY<br>DATE: 2013/01/04<br>REV: 1<br>DESCRIPTION: | QUALITY SYMBOLS<br>▽=0<br>▽=0<br>▽=0 |      | GENERAL TOLERANCES (UNLESS SPECIFIED)<br><table border="1"> <thead> <tr> <th></th> <th>mm</th> <th>INCH</th> </tr> </thead> <tbody> <tr> <td>4 PLACES</td> <td>±---</td> <td>±---</td> </tr> <tr> <td>3 PLACES</td> <td>±---</td> <td>±---</td> </tr> <tr> <td>2 PLACES</td> <td>±0.10</td> <td>±---</td> </tr> <tr> <td>1 PLACE</td> <td>±0.3</td> <td>±---</td> </tr> <tr> <td>0 PLACE</td> <td>±</td> <td>±</td> </tr> </tbody> </table> |  |  | mm  | INCH | 4 PLACES            | ±--- | ±--- | 3 PLACES | ±--- | ±--- | 2 PLACES | ±0.10 | ±--- | 1 PLACE | ±0.3 | ±--- | 0 PLACE | ± | ± | DIMENSION STYLE<br><b>MM ONLY</b> |  | SCALE<br><b>4:1</b> | DESIGN UNITS<br><b>METRIC</b> | THIRD ANGLE PROJECTION<br> |
|---|--------------------------------------|------|---|--|--|---|------|---------------------|------|------|----------|------|------|----------|-------|------|---------|------|------|---------|---|---|-----------------------------------|--|---------------------|-------------------------------|----------------------------|
|   |                                      | mm   | INCH  |  |  |   |      |                     |      |      |          |      |      |          |       |      |         |      |      |         |   |   |                                   |  |                     |                               |                            |
|   | 4 PLACES                             | ±--- | ±---  |  |  |   |      |                     |      |      |          |      |      |          |       |      |         |      |      |         |   |   |                                   |  |                     |                               |                            |
|   | 3 PLACES                             | ±--- | ±---  |  |  |   |      |                     |      |      |          |      |      |          |       |      |         |      |      |         |   |   |                                   |  |                     |                               |                            |
| 2 PLACES  | ±0.10                                | ±--- |   |  |  |   |      |                     |      |      |          |      |      |          |       |      |         |      |      |         |   |   |                                   |  |                     |                               |                            |
| 1 PLACE   | ±0.3                                 | ±--- |   |  |  |   |      |                     |      |      |          |      |      |          |       |      |         |      |      |         |   |   |                                   |  |                     |                               |                            |
| 0 PLACE   | ±                                    | ±    |   |  |  |   |      |                     |      |      |          |      |      |          |       |      |         |      |      |         |   |   |                                   |  |                     |                               |                            |
| DRAFT WHERE APPLICABLE MUST REMAIN WITHIN DIMENSIONS  |                                      |      | ANGLAR ± 3 °  |  | DRAWN BY: D. MARCOUX<br>DATE: 06-13-02     | TITLE<br><b>MX150 2X4 RECEPTACLE SEALED ASSEMBLY MAT SEAL</b> |      |                     |      |      |          |      |      |          |       |      |         |      |      |         |   |   |                                   |  |                     |                               |                            |
|   |                                      |      | MATERIAL NO.<br><b>SEE BOM</b>  |  | CHECKED BY: D. GRIFFITHS<br>DATE: 06-13-02 | APPROVED BY: F. HOLUB<br>DATE: 06-13-02                       |      |                     |      |      |          |      |      |          |       |      |         |      |      |         |   |   |                                   |  |                     |                               |                            |
|   |                                      |      | SIZE<br><b>D</b>  |  | DOCUMENT NO.<br><b>SD-33472-081</b>        |   |      | SHEET NO.<br>6 OF 9 |      |      |          |      |      |          |       |      |         |      |      |         |   |   |                                   |  |                     |                               |                            |

19 18 17 16 15 14 13 12 11 10 9 8 7 6 5 4 3 2 1



| ASSEMBLY DESCRIPTION     | ASSEMBLY PART NUMBER | A | B | C | D | D | D | A | GCO | GCP | CPA | 1 | 2 | 3 | 4 | 5 | 6 | 7 | 8 | STATUS                                    | COMMENTS | 34951-0810<br>WDC WITH RIBS | 34951-0820<br>WDC WITHOUT RIBS |
|--------------------------|----------------------|---|---|---|---|---|---|---|-----|-----|-----|---|---|---|---|---|---|---|---|---|----------|-----------------------------|--------------------------------|
| VOID KEY                 | 33472-0840           |   |   |   |   |   |   |   |     |     |     |   |   |   |   |   |   |   |   |   |          |                             |                                |
| KEY D, W/CPA, GREEN      | 33472-0839           |   |   |   | D |   |   |   |     | GCP | CPA | 1 |   |   | 4 | 5 |   |   |   | NOT RECOMMENDED                           |          | OK TO TOOL                  | OK TO TOOL                     |
| KEY C, W/CPA, BROWN      | 33472-0838           |   |   |   | C |   |   |   |     | GCP | CPA | 1 |   |   | 4 | 5 |   |   |   | NOT RECOMMENDED                           |          | OK TO TOOL                  | OK TO TOOL                     |
| KEY B, W/CPA, LIGHT GRAY | 33472-0837           |   | B |   |   |   |   |   |     | GCP | CPA | 1 |   |   | 4 | 5 |   |   |   |   |          | OK TO TOOL                  | OK TO TOOL                     |
| KEY A, W/CPA, BLACK      | 33472-0836           |   | A |   |   |   |   |   |     | GCP | CPA | 1 |   |   | 4 | 5 |   |   |   |   |          | OK TO TOOL                  | OK TO TOOL                     |
| VOID KEY                 | 33472-0835           |   |   |   |   |   |   |   |     |     |     |   |   |   |   |   |   |   |   |   |          |                             |                                |
| KEY D, GREEN             | 33472-0834           |   |   |   | D |   |   |   |     | GCP |     | 1 |   |   | 4 | 5 |   |   |   | NOT RECOMMENDED                           |          | OK TO TOOL                  | OK TO TOOL                     |
| KEY C, BROWN             | 33472-0833           |   |   |   | C |   |   |   |     | GCP |     | 1 |   |   | 4 | 5 |   |   |   | NOT RECOMMENDED                           |          | OK TO TOOL                  | OK TO TOOL                     |
| KEY B, LIGHT GRAY        | 33472-0832           |   | B |   |   |   |   |   |     | GCP |     | 1 |   |   | 4 | 5 |   |   |   |   |          | OK TO TOOL                  | OK TO TOOL                     |
| KEY A, BLACK             | 33472-0831           |   | A |   |   |   |   |   |     | GCP |     | 1 |   |   | 4 | 5 |   |   |   |   |          | OK TO TOOL                  | OK TO TOOL                     |
| VOID KEY                 | 33472-0830           |   |   |   |   |   |   |   |     |     |     |   |   |   |   |   |   |   |   |   |          |                             |                                |
| KEY D, W/CPA, GREEN      | 33472-0829           |   |   |   | D |   |   |   |     | GCP | CPA |   |   |   | 4 | 5 |   |   |   | NOT RECOMMENDED                           |          | OK TO TOOL                  | OK TO TOOL                     |
| KEY C, W/CPA, BROWN      | 33472-0828           |   |   |   | C |   |   |   |     | GCP | CPA |   |   |   | 4 | 5 |   |   |   | NOT RECOMMENDED                           |          | OK TO TOOL                  | OK TO TOOL                     |
| KEY B, W/CPA, LIGHT GRAY | 33472-0827           |   | B |   |   |   |   |   |     | GCP | CPA |   |   |   | 4 | 5 |   |   |   |   |          | OK TO TOOL                  | OK TO TOOL                     |
| KEY A, W/CPA, BLACK      | 33472-0826           |   | A |   |   |   |   |   |     | GCP | CPA |   |   |   | 4 | 5 |   |   |   |   |          | OK TO TOOL                  | OK TO TOOL                     |
| VOID KEY                 | 33472-0825           |   |   |   |   |   |   |   |     |     |     |   |   |   |   |   |   |   |   |   |          |                             |                                |
| KEY D, GREEN             | 33472-0824           |   |   |   | D |   |   |   |     | GCP |     |   |   |   | 4 | 5 |   |   |   | NOT RECOMMENDED                           |          | OK TO TOOL                  | OK TO TOOL                     |
| KEY C, BROWN             | 33472-0823           |   |   |   | C |   |   |   |     | GCP |     |   |   |   | 4 | 5 |   |   |   | NOT RECOMMENDED                           |          | OK TO TOOL                  | OK TO TOOL                     |
| KEY B, LIGHT GRAY        | 33472-0822           |   | B |   |   |   |   |   |     | GCP |     |   |   |   | 4 | 5 |   |   |   |   |          | OK TO TOOL                  | OK TO TOOL                     |
| KEY A, BLACK             | 33472-0821           |   | A |   |   |   |   |   |     | GCP |     |   |   |   | 4 | 5 |   |   |   |   |          | OK TO TOOL                  | OK TO TOOL                     |
| VOID KEY                 | 33472-0820           |   |   |   |   |   |   |   |     |     |     |   |   |   |   |   |   |   |   |   |          |                             |                                |
| KEY D, W/CPA, GREEN      | 33472-0819           |   |   |   | D |   |   |   |     | GCP | CPA |   |   |   | 4 |   |   |   |   | NOT RECOMMENDED                           |          | OK TO TOOL                  | OK TO TOOL                     |
| KEY C, W/CPA, BROWN      | 33472-0818           |   |   |   | C |   |   |   |     | GCP | CPA |   |   |   | 4 |   |   |   |   | NOT RECOMMENDED                           |          | OK TO TOOL                  | OK TO TOOL                     |
| KEY B, W/CPA, LIGHT GRAY | 33472-0817           |   | B |   |   |   |   |   |     | GCP | CPA |   |   |   | 4 |   |   |   |   |   |          | OK TO TOOL                  | OK TO TOOL                     |
| KEY A, W/CPA, BLACK      | 33472-0816           |   | A |   |   |   |   |   |     | GCP | CPA |   |   |   | 4 |   |   |   |   |   |          | OK TO TOOL                  | OK TO TOOL                     |
| VOID KEY                 | 33472-0815           |   |   |   |   |   |   |   |     |     |     |   |   |   |   |   |   |   |   |   |          |                             |                                |
| KEY D, GREEN             | 33472-0814           |   |   |   | D |   |   |   |     | GCP |     |   |   |   | 4 |   |   |   |   | NOT RECOMMENDED                           |          | OK TO TOOL                  | OK TO TOOL                     |
| KEY C, BROWN             | 33472-0813           |   |   |   | C |   |   |   |     | GCP |     |   |   |   | 4 |   |   |   |   | NOT RECOMMENDED                           |          | OK TO TOOL                  | OK TO TOOL                     |
| KEY B, LIGHT GRAY        | 33472-0812           |   | B |   |   |   |   |   |     | GCP |     |   |   |   | 4 |   |   |   |   |   |          | OK TO TOOL                  | OK TO TOOL                     |
| KEY A, BLACK             | 33472-0811           |   | A |   |   |   |   |   |     | GCP |     |   |   |   | 4 |   |   |   |   |   |          | OK TO TOOL                  | OK TO TOOL                     |
| VOID KEY                 | 33472-0810           |   |   |   |   |   |   |   |     |     |     |   |   |   |   |   |   |   |   |   |          |                             |                                |
| KEY D, W/CPA, GREEN      | 33472-0809           |   |   |   | D |   |   |   |     | GCO | CPA |   |   |   |   |   |   |   |   | NOT RECOMMENDED USE.PLEASE USE 33472-0882 |          | OK TO TOOL                  | OK TO TOOL                     |
| KEY C, W/CPA, BROWN      | 33472-0808           |   |   |   | C |   |   |   |     | GCO | CPA |   |   |   |   |   |   |   |   | NOT RECOMMENDED USE.PLEASE USE 33472-0881 |          | OK TO TOOL                  | OK TO TOOL                     |
| KEY B, W/CPA, LIGHT GRAY | 33472-0807           |   | B |   |   |   |   |   |     | GCO | CPA |   |   |   |   |   |   |   |   |   |          | OK TO TOOL                  | OK TO TOOL                     |
| KEY A, W/CPA, BLACK      | 33472-0806           |   | A |   |   |   |   |   |     | GCO | CPA |   |   |   |   |   |   |   |   |   |          | OK TO TOOL                  | OK TO TOOL                     |
| KEY D, BLACK             | 33472-0805           |   |   |   | D |   |   |   |     | GCO |     |   |   |   |   |   |   |   |   |   |          | OK TO TOOL                  | OK TO TOOL                     |
| KEY D, GREEN             | 33472-0804           |   |   |   | D |   |   |   |     | GCO |     |   |   |   |   |   |   |   |   | NOT RECOMMENDED USE.PLEASE USE 33472-0880 |          | OK TO TOOL                  | OK TO TOOL                     |
| KEY C, BROWN             | 33472-0803           |   |   |   | C |   |   |   |     | GCO |     |   |   |   |   |   |   |   |   | NOT RECOMMENDED USE.PLEASE USE 33472-0879 |          | OK TO TOOL                  | OK TO TOOL                     |
| KEY B, LIGHT GRAY        | 33472-0802           |   | B |   |   |   |   |   |     | GCO |     |   |   |   |   |   |   |   |   |   |          | OK TO TOOL                  | OK TO TOOL                     |
| KEY A, BLACK             | 33472-0801           |   | A |   |   |   |   |   |     | GCO |     |   |   |   |   |   |   |   |   |   |          | OK TO TOOL                  | OK TO TOOL                     |

| DESCRIPTION             | COLOR      | MATERIAL                       |
|-------------------------|------------|--------------------------------|
| MAT SEAL                | LIGHT BLUE | INHERENTLY LUBRICATED SILICONE |
| RING SEAL               | GREEN      | INHERENTLY LUBRICATED SILICONE |
| PLR                     | NATURAL    | SPS/NYLON GF20                 |
| CPA                     | RED        | PBT GF20                       |
| GROMMET CAP (PLUGGED)   | BLACK      | SPS/NYLON GF20                 |
| GROMMET CAP (OPEN)      | BLACK      | SPS/NYLON GF20                 |
| HOUSING KEYING OPTION A | YELLOW     | SPS/NYLON GF20                 |
| HOUSING KEYING OPTION D | STONE GRAY | SPS/NYLON GF20                 |
| HOUSING KEYING OPTION C | DARK GRAY  | SPS/NYLON GF20                 |
| HOUSING KEYING OPTION D | BLACK      | SPS/NYLON GF20                 |
| HOUSING KEYING OPTION D | GREEN      | SPS/NYLON GF20                 |
| HOUSING KEYING OPTION C | BROWN      | SPS/NYLON GF20                 |
| HOUSING KEYING OPTION B | LIGHT GRAY | SPS/NYLON GF20                 |
| HOUSING KEYING OPTION A | BLACK      | SPS/NYLON GF20                 |

| ABBREVIATION | COMPONENT                    |
|--------------|------------------------------|
| A            | HOUSING KEY A                |
| B            | HOUSING KEY B                |
| C            | HOUSING KEY C                |
| D            | HOUSING KEY D                |
| GCO          | GROMMET CAP, OPEN            |
| GCP          | GROMMET CAP, PLUGGED         |
| PLR          | PRIMARY LOCK REINFORCEMENT   |
| CPA          | CONNECTOR POSITION ASSURANCE |
| WDC          | WIRE DRESS COVER             |

|   |  |  |  |  |   |
|---|--|--|--|--|---|
| <b>ENTER DESCRIPTION</b><br>ELEC NO: UAU2013-1018<br>DRAWN BY: CHYD<br>APPR: IKOSHY<br>2013/01/16<br>2013/01/16<br>Y4 | QUALITY SYMBOLS<br>∇=0<br>∇=0<br>∇=0   | GENERAL TOLERANCES (UNLESS SPECIFIED)<br>DIMENSION STYLE<br>MM ONLY<br>SCALE<br>DESIGN UNITS<br>METRIC<br>THIRD ANGLE PROJECTION | DRAWN BY: D. MARCOUX<br>DATE: 06-13-02<br>CHECKED BY: DGRIFITHS<br>DATE: 06-13-02<br>APPROVED BY: FHOLUB<br>DATE: 06-13-02 | TITLE<br>MX150 2X4 RECEPTACLE SEALED ASSEMBLY MAT SEAL<br>molex<br>MATERIAL NO.<br>SEE BOM<br>DOCUMENT NO.<br>SD-33472-081 | SHEET NO.<br>7 OF 9   |
|   | BLOCKED TERMINAL<br>CAVITY WITH A NUMBER INDICATES BLOCKED TERMINAL POSITION<br>CAVITY WITHOUT A NUMBER INDICATES OPEN TERMINAL POSITION   |  | STATUS   |  | COMMENTS<br>34951-0810 WDC WITH RIBS<br>34951-0820 WDC WITHOUT RIBS<br>OPTIONAL ATTACHMENTS SOLD SEPERATLEY |
|   | BOM/APPLICABLE COMPONENTS TABLE  |  | STATUS   |  | COMMENTS  |
|   | MAT SEAL LIGHT BLUE INHERENTLY LUBRICATED SILICONE<br>RING SEAL GREEN INHERENTLY LUBRICATED SILICONE<br>PLR NATURAL SPS/NYLON GF20<br>CPA RED PBT GF20<br>GROMMET CAP (PLUGGED) BLACK SPS/NYLON GF20<br>GROMMET CAP (OPEN) BLACK SPS/NYLON GF20<br>HOUSING KEYING OPTION A YELLOW SPS/NYLON GF20<br>HOUSING KEYING OPTION D STONE GRAY SPS/NYLON GF20<br>HOUSING KEYING OPTION C DARK GRAY SPS/NYLON GF20<br>HOUSING KEYING OPTION D BLACK SPS/NYLON GF20<br>HOUSING KEYING OPTION D GREEN SPS/NYLON GF20<br>HOUSING KEYING OPTION C BROWN SPS/NYLON GF20<br>HOUSING KEYING OPTION B LIGHT GRAY SPS/NYLON GF20<br>HOUSING KEYING OPTION A BLACK SPS/NYLON GF20 |  | STATUS   |  | COMMENTS  |

| ASSEMBLY DESCRIPTION     | PART NUMBER | A | B | C | D | D | D | D | D | A | GCO | GCP | CPA | 1 | 2 | 3 | 4 | 5 | 6 | 7 | 8 | STATUS          | COMMENTS   | 34951-0810<br>WDC WITH RIBS | 34951-0820<br>WDC WITHOUT RIBS |            |
|--------------------------|-------------|---|---|---|---|---|---|---|---|---|-----|-----|-----|---|---|---|---|---|---|---|---|-----------------|------------|-----------------------------|--------------------------------|------------|
| KEY D, STONE GRAY        | 33472-0880  |   |   |   |   |   |   |   |   |   | D   | GCO |     |   |   |   |   |   |   |   |   |                 | OK TO TOOL | OK TO TOOL                  |                                |            |
| KEY C, DARK GRAY         | 33472-0879  |   |   |   |   |   |   |   |   |   | C   | GCO |     |   |   |   |   |   |   |   |   |                 | OK TO TOOL | OK TO TOOL                  |                                |            |
| KEY A, BLACK             | 33472-0878  | A |   |   |   |   |   |   |   |   |     | GCP |     |   |   | 3 |   | 5 | 6 |   |   |                 | OK TO TOOL | OK TO TOOL                  |                                |            |
| KEY A, W/CPA, BLACK      | 33472-0877  | A |   |   |   |   |   |   |   |   |     | GCP | CPA |   |   |   |   |   |   |   |   |                 | OK TO TOOL | OK TO TOOL                  |                                |            |
| KEY A, BLACK             | 33472-0876  | A |   |   |   |   |   |   |   |   |     | GCP |     | 1 | 2 | 3 | 4 | 5 | 6 | 7 | 8 |                 | OK TO TOOL | OK TO TOOL                  |                                |            |
| KEY A, BLACK             | 33472-0875  | A |   |   |   |   |   |   |   |   |     | GCP |     |   | 2 | 3 |   |   |   |   |   |                 | OK TO TOOL | OK TO TOOL                  |                                |            |
| KEY A, BLACK             | 33472-0874  | A |   |   |   |   |   |   |   |   |     | GCP |     |   | 2 | 3 |   |   |   |   | 6 | 7               | 8          | OK TO TOOL                  | OK TO TOOL                     |            |
| KEY A, BLACK             | 33472-0873  | A |   |   |   |   |   |   |   |   |     | GCP |     |   | 2 | 3 |   |   |   |   |   |                 | 7          | 8                           | OK TO TOOL                     | OK TO TOOL |
| KEY A, BLACK             | 33472-0872  | A |   |   |   |   |   |   |   |   |     | GCP |     |   |   |   |   |   |   |   |   |                 |            |                             | OK TO TOOL                     | OK TO TOOL |
| KEY A, BLACK             | 33472-0871  | A |   |   |   |   |   |   |   |   |     | GCP |     | 1 | 2 | 3 | 4 | 5 | 6 | 7 | 8 |                 | OK TO TOOL | OK TO TOOL                  |                                |            |
| KEY A, BLACK             | 33472-0870  | A |   |   |   |   |   |   |   |   |     | GCP |     | 1 |   | 3 |   | 5 | 6 | 7 | 8 |                 | OK TO TOOL | OK TO TOOL                  |                                |            |
| KEY A, BLACK             | 33472-0869  | A |   |   |   |   |   |   |   |   |     | GCP |     |   |   |   |   |   |   |   |   |                 | OK TO TOOL | OK TO TOOL                  |                                |            |
| KEY A, BLACK             | 33472-0868  | A |   |   |   |   |   |   |   |   |     | GCP |     |   |   |   |   | 5 | 6 | 8 |   |                 | OK TO TOOL | OK TO TOOL                  |                                |            |
| KEY A, BLACK             | 33472-0867  | A |   |   |   |   |   |   |   |   |     | GCP |     | 1 |   | 3 |   | 5 | 6 |   |   |                 | OK TO TOOL | OK TO TOOL                  |                                |            |
| KEY A, BLACK             | 33472-0866  | A |   |   |   |   |   |   |   |   |     | GCP |     |   | 2 | 3 |   | 5 | 6 | 8 |   |                 | OK TO TOOL | OK TO TOOL                  |                                |            |
| KEY A, BLACK             | 33472-0865  | A |   |   |   |   |   |   |   |   |     | GCP |     | 1 |   |   |   |   |   |   | 6 |                 | OK TO TOOL | OK TO TOOL                  |                                |            |
| KEY A, BLACK             | 33472-0864  | A |   |   |   |   |   |   |   |   |     | GCP |     | 1 |   | 3 |   | 5 |   |   |   |                 | OK TO TOOL | OK TO TOOL                  |                                |            |
| KEY A, BLACK             | 33472-0863  | A |   |   |   |   |   |   |   |   |     | GCP |     |   | 2 | 3 |   | 5 |   |   | 8 |                 | OK TO TOOL | OK TO TOOL                  |                                |            |
| KEY A, BLACK             | 33472-0862  | A |   |   |   |   |   |   |   |   |     | GCP |     | 1 |   |   |   |   |   |   |   |                 | OK TO TOOL | OK TO TOOL                  |                                |            |
| KEY A, BLACK             | 33472-0861  | A |   |   |   |   |   |   |   |   |     | GCP |     |   |   |   |   |   |   |   |   |                 | OK TO TOOL | OK TO TOOL                  |                                |            |
| KEY D, BLACK             | 33472-0860  |   |   |   |   |   |   |   |   |   | D   | GCP |     |   |   |   | 4 |   |   |   |   |                 | OK TO TOOL | OK TO TOOL                  |                                |            |
| KEY A, BLACK             | 33472-0859  | A |   |   |   |   |   |   |   |   |     | GCP |     | 1 | 2 | 3 |   |   |   |   | 6 | 7               | 8          | OK TO TOOL                  | OK TO TOOL                     |            |
| KEY A, W/CPA, BLACK      | 33472-0858  | A |   |   |   |   |   |   |   |   |     | GCP | CPA | 1 | 2 | 3 |   |   |   |   | 5 | 6               | 7          | OK TO TOOL                  | OK TO TOOL                     |            |
| KEY A, W/CPA, BLACK      | 33472-0857  | A |   |   |   |   |   |   |   |   |     | GCP | CPA | 1 | 2 |   |   |   |   |   | 5 | 6               | 7          | OK TO TOOL                  | OK TO TOOL                     |            |
| KEY A, W/CPA, BLACK      | 33472-0856  | A |   |   |   |   |   |   |   |   |     | GCP | CPA |   | 2 |   |   |   |   |   |   |                 | 6          | 7                           | OK TO TOOL                     | OK TO TOOL |
| KEY D, BLACK             | 33472-0855  |   |   |   |   |   |   |   |   |   | D   | GCP |     | 1 | 2 | 3 | 4 | 5 | 6 | 7 | 8 |                 | OK TO TOOL | OK TO TOOL                  |                                |            |
| KEY D, GREEN             | 33472-0854  |   |   |   |   |   |   |   |   |   | D   | GCP |     | 1 | 2 | 3 | 4 | 5 | 6 | 7 | 8 | NOT RECOMMENDED | OK TO TOOL | OK TO TOOL                  |                                |            |
| KEY C, BROWN             | 33472-0853  |   |   |   |   |   |   |   |   |   | C   | GCP |     | 1 | 2 | 3 | 4 | 5 | 6 | 7 | 8 | NOT RECOMMENDED | OK TO TOOL | OK TO TOOL                  |                                |            |
| KEY B, LIGHT GRAY        | 33472-0852  |   |   |   |   |   |   |   |   |   | B   | GCP |     | 1 | 2 | 3 | 4 | 5 | 6 | 7 | 8 |                 | OK TO TOOL | OK TO TOOL                  |                                |            |
| KEY A, BLACK             | 33472-0851  | A |   |   |   |   |   |   |   |   |     | GCP |     | 1 | 2 | 3 | 4 | 5 | 6 | 7 | 8 |                 | OK TO TOOL | OK TO TOOL                  |                                |            |
| VOID KEY                 | 33472-0850  |   |   |   |   |   |   |   |   |   |     |     |     |   |   |   |   |   |   |   |   |                 |            |                             |                                |            |
| KEY D, W/CPA, GREEN      | 33472-0849  |   |   |   |   |   |   |   |   |   | D   | GCP | CPA | 1 |   |   | 4 | 5 |   |   | 8 | NOT RECOMMENDED | OK TO TOOL | OK TO TOOL                  |                                |            |
| KEY C, W/CPA, BROWN      | 33472-0848  |   |   |   |   |   |   |   |   |   | C   | GCP | CPA | 1 |   |   | 4 | 5 |   |   | 8 | NOT RECOMMENDED | OK TO TOOL | OK TO TOOL                  |                                |            |
| KEY B, W/CPA, LIGHT GRAY | 33472-0847  |   |   |   |   |   |   |   |   |   | B   | GCP | CPA | 1 |   |   | 4 | 5 |   |   | 8 |                 | OK TO TOOL | OK TO TOOL                  |                                |            |
| KEY A, W/CPA, BLACK      | 33472-0846  | A |   |   |   |   |   |   |   |   |     | GCP | CPA | 1 |   |   | 4 | 5 |   |   | 8 |                 | OK TO TOOL | OK TO TOOL                  |                                |            |
| VOID KEY                 | 33472-0845  |   |   |   |   |   |   |   |   |   |     |     |     |   |   |   |   |   |   |   |   |                 |            |                             |                                |            |
| KEY D, GREEN             | 33472-0844  |   |   |   |   |   |   |   |   |   | D   | GCP |     | 1 |   |   | 4 | 5 |   |   | 8 | NOT RECOMMENDED | OK TO TOOL | OK TO TOOL                  |                                |            |
| KEY C, BROWN             | 33472-0843  |   |   |   |   |   |   |   |   |   | C   | GCP |     | 1 |   |   | 4 | 5 |   |   | 8 | NOT RECOMMENDED | OK TO TOOL | OK TO TOOL                  |                                |            |
| KEY B, LIGHT GRAY        | 33472-0842  |   |   |   |   |   |   |   |   |   | B   | GCP |     | 1 |   |   | 4 | 5 |   |   | 8 |                 | OK TO TOOL | OK TO TOOL                  |                                |            |
| KEY A, BLACK             | 33472-0841  | A |   |   |   |   |   |   |   |   |     | GCP |     | 1 |   |   | 4 | 5 |   |   | 8 |                 | OK TO TOOL | OK TO TOOL                  |                                |            |

| DESCRIPTION             | COLOR      | MATERIAL                       |
|-------------------------|------------|--------------------------------|
| MAT SEAL                | LIGHT BLUE | INHERENTLY LUBRICATED SILICONE |
| RING SEAL               | GREEN      | INHERENTLY LUBRICATED SILICONE |
| PLR                     | NATURAL    | SPS/NYLON GF20                 |
| CPA                     | RED        | PBT GF20                       |
| GROMMET CAP (PLUGGED)   | BLACK      | SPS/NYLON GF20                 |
| GROMMET CAP (OPEN)      | BLACK      | SPS/NYLON GF20                 |
| HOUSING KEYING OPTION A | YELLOW     | SPS/NYLON GF20                 |
| HOUSING KEYING OPTION D | STONE GRAY | SPS/NYLON GF20                 |
| HOUSING KEYING OPTION C | DARK GRAY  | SPS/NYLON GF20                 |
| HOUSING KEYING OPTION D | BLACK      | SPS/NYLON GF20                 |
| HOUSING KEYING OPTION D | GREEN      | SPS/NYLON GF20                 |
| HOUSING KEYING OPTION C | BROWN      | SPS/NYLON GF20                 |
| HOUSING KEYING OPTION B | LIGHT GRAY | SPS/NYLON GF20                 |
| HOUSING KEYING OPTION A | BLACK      | SPS/NYLON GF20                 |

| ABBREVIATION | COMPONENT                    |
|--------------|------------------------------|
| A            | HOUSING KEY A                |
| B            | HOUSING KEY B                |
| C            | HOUSING KEY C                |
| D            | HOUSING KEY D                |
| GCO          | GROMMET CAP, OPEN            |
| GCP          | GROMMET CAP, PLUGGED         |
| PLR          | PRIMARY LOCK REINFORCEMENT   |
| CPA          | CONNECTOR POSITION ASSURANCE |
| WDC          | WIRE DRESS COVER             |

BOM/APPLICABLE COMPONENTS TABLE

|   |   |   |                                       |                         |                              |  |                     |
|---|---|---|---------------------------------------|-------------------------|------------------------------|--|---------------------|
| <b>ENTER DESCRIPTION</b><br>ELEC NO. UAU2013-1018<br>DRAWN BY: CHYK<br>CHECKED: APPR: WJSHY<br>2013/01/16<br>2013/01/16 | QUALITY SYMBOLS<br>∇=0<br>∇=0<br>∇=0  | GENERAL TOLERANCES (UNLESS SPECIFIED)<br>mm INCH<br>4 PLACES ± --- ± ---<br>3 PLACES ± 0.10 ± ---<br>2 PLACES ± 0.3 ± ---<br>1 PLACE ± ± ---<br>0 PLACE ± ± --- | DIMENSION STYLE<br>MM ONLY            | SCALE<br>METRIC         | DESIGN UNITS<br>METRIC       | THIRD ANGLE PROJECTION                                 |                     |
|   | DRAWN BY: D. MARCOUX<br>DATE: 06-13-02  | CHECKED BY: D. GRIFFITHS<br>DATE: 06-13-02  | APPROVED BY: FHOLUB<br>DATE: 06-13-02 | MATERIAL NO.<br>SEE BOM | DOCUMENT NO.<br>SD-33472-081 | TITLE<br>MX150 2X4 RECEPTACLE SEALED ASSEMBLY MAT SEAL | SHEET NO.<br>8 OF 9 |
|   | THIS DRAWING CONTAINS INFORMATION THAT IS PROPRIETARY TO MOLEX INCORPORATED AND SHOULD NOT BE USED WITHOUT WRITTEN PERMISSION |   |                                       |                         |                              |  |                     |
|   | DRAFT WHERE APPLICABLE MUST REMAIN WITHIN DIMENSIONS  |   |                                       |                         |                              |  |                     |

| ASSEMBLY DESCRIPTION     | ASSEMBLY PART NUMBER | A | B | C | D | D | C | D | C | A | D   | A | GCO | GCP | CPA | 1 | 2 | 3 | 4 | 5 | 6 | 7 | 8 | STATUS | COMMENTS                 | 34951-0810<br>WDC WITH RIBS | 34951-0820<br>WDC WITHOUT RIBS |
|--------------------------|----------------------|---|---|---|---|---|---|---|---|---|-----|---|-----|-----|-----|---|---|---|---|---|---|---|---|--------|--------------------------|-----------------------------|--------------------------------|
| KEY B, LIGHT GRAY        | 33472-0897           |   | B |   |   |   |   |   |   |   |     |   |     | GCP |     |   |   |   |   |   |   |   |   |        | OK TO TOOL               | OK TO TOOL                  |                                |
| KEY A, BLACK             | 33472-0896           | A |   |   |   |   |   |   |   |   |     |   |     | GCP |     | 1 | 2 | 3 | 4 |   |   |   |   |        | OK TO TOOL               | OK TO TOOL                  |                                |
| KEY A, BLACK             | 33472-0895           | A |   |   |   |   |   |   |   |   |     |   |     | GCP |     | 1 | 2 |   |   |   |   |   |   |        | OK TO TOOL               | OK TO TOOL                  |                                |
| KEY A, W/CPA, BLACK      | 33472-0894           | A |   |   |   |   |   |   |   |   |     |   |     | GCP | CPA | 1 | 2 | 3 |   |   |   | 6 | 7 | 8      | OK TO TOOL               | OK TO TOOL                  |                                |
| KEY A, W/CPA, BLACK      | 33472-0893           | A |   |   |   |   |   |   |   |   |     |   |     | GCP | CPA |   |   |   |   |   |   |   |   | 6      | OK TO TOOL               | OK TO TOOL                  |                                |
| KEY A, YELLOW            | 33472-0892           |   |   |   |   |   |   |   |   | A | GCO |   |     |     |     |   |   |   |   |   |   |   |   |        | OK TO TOOL               | OK TO TOOL                  |                                |
| KEY A, W/CPA, YELLOW     | 33472-0891           |   |   |   |   |   |   |   |   | A | GCO |   |     |     | CPA |   |   |   |   |   |   |   |   |        | TOOLED BUT NOT VALIDATED | OK TO TOOL                  |                                |
| KEY A, W/CPA, YELLOW     | 33472-0890           |   |   |   |   |   |   |   |   | A | GCO |   |     |     | CPA |   | 2 | 3 |   |   |   |   |   |        | TOOLED BUT NOT VALIDATED | OK TO TOOL                  |                                |
| KEY A, BLACK             | 33472-0889           | A |   |   |   |   |   |   |   |   |     |   |     | GCP |     | 1 |   |   |   |   |   |   |   | 5      | OK TO TOOL               | OK TO TOOL                  |                                |
| KEY B, LIGHT GRAY        | 33472-0888           |   | B |   |   |   |   |   |   |   |     |   |     | GCP |     | 1 |   |   |   |   |   |   |   | 6      | OK TO TOOL               | OK TO TOOL                  |                                |
| KEY B, W/CPA, LIGHT GRAY | 33472-0887           |   | B |   |   |   |   |   |   |   |     |   |     | GCP | CPA |   |   |   |   |   |   |   |   |        | 8                        | OK TO TOOL                  | OK TO TOOL                     |
| KEY A, BLACK             | 33472-0886           | A |   |   |   |   |   |   |   |   |     |   |     | GCP |     |   |   | 3 |   |   |   |   |   | 6      | 8                        | OK TO TOOL                  | OK TO TOOL                     |
| KEY A, BLACK             | 33472-0885           | A |   |   |   |   |   |   |   |   |     |   |     | GCP |     |   | 2 | 3 | 4 | 5 | 6 |   |   | 7      | 8                        | OK TO TOOL                  | OK TO TOOL                     |
| KEY A, BLACK             | 33472-0884           | A |   |   |   |   |   |   |   |   |     |   |     | GCP |     |   |   | 3 |   |   |   |   |   | 6      | 7                        | OK TO TOOL                  | OK TO TOOL                     |
| KEY A, BLACK             | 33472-0883           | A |   |   |   |   |   |   |   |   |     |   |     | GCP |     |   | 2 | 3 | 4 | 5 |   |   |   | 7      | 8                        | OK TO TOOL                  | OK TO TOOL                     |
| KEY D, W/CPA, STONE GRAY | 33472-0882           |   |   |   | D |   |   |   |   | D | GCO |   |     |     | CPA |   |   |   |   |   |   |   |   |        |                          | OK TO TOOL                  | OK TO TOOL                     |
| KEY C, W/CPA, DARK GRAY  | 33472-0881           |   |   |   | D |   |   |   |   | D | GCO |   |     |     | CPA |   |   |   |   |   |   |   |   |        |                          | OK TO TOOL                  | OK TO TOOL                     |
| ASSEMBLY DESCRIPTION     | ASSEMBLY PART NUMBER | A | B | C | D | D | C | D | C | A | D   | A | GCO | GCP | CPA | 1 | 2 | 3 | 4 | 5 | 6 | 7 | 8 |        |                          | OK TO TOOL                  | OK TO TOOL                     |

| DESCRIPTION  | COLOR      | MATERIAL                       |
|--|------------|--------------------------------|
| BLOCKED TERMINAL   |            |                                |
| CAVITY WITH A NUMBER INDICATES BLOCKED TERMINAL POSITION |            |                                |
| CAVITY WITHOUT A NUMBER INDICATES OPEN TERMINAL POSITION |            |                                |
| MAT SEAL   | LIGHT BLUE | INHERENTLY LUBRICATED SILICONE |
| RING SEAL  | GREEN      | INHERENTLY LUBRICATED SILICONE |
| PLR  | NATURAL    | SPS/NYLON GF20                 |
| CPA  | RED        | PBT GF20                       |
| GROMMET CAP (PLUGGED)                                    | BLACK      | SPS/NYLON GF20                 |
| GROMMET CAP (OPEN)                                       | BLACK      | SPS/NYLON GF20                 |
| HOUSING KEYING OPTION A                                  | YELLOW     | SPS/NYLON GF20                 |
| HOUSING KEYING OPTION D                                  | STONE GRAY | SPS/NYLON GF20                 |
| HOUSING KEYING OPTION C                                  | DARK GRAY  | SPS/NYLON GF20                 |
| HOUSING KEYING OPTION D                                  | BLACK      | SPS/NYLON GF20                 |
| HOUSING KEYING OPTION D                                  | GREEN      | SPS/NYLON GF20                 |
| HOUSING KEYING OPTION C                                  | BROWN      | SPS/NYLON GF20                 |
| HOUSING KEYING OPTION B                                  | LIGHT GRAY | SPS/NYLON GF20                 |
| HOUSING KEYING OPTION A                                  | BLACK      | SPS/NYLON GF20                 |

| ABBREVIATION | COMPONENT                    |
|--------------|------------------------------|
| A            | HOUSING KEY A                |
| B            | HOUSING KEY B                |
| C            | HOUSING KEY C                |
| D            | HOUSING KEY D                |
| GCO          | GROMMET CAP, OPEN            |
| GCP          | GROMMET CAP, PLUGGED         |
| PLR          | PRIMARY LOCK REINFORCEMENT   |
| CPA          | CONNECTOR POSITION ASSURANCE |
| WDC          | WIRE DRESS COVER             |

|  |   |   |                            |                                 |  |
|--|---|---|----------------------------|---------------------------------|--|
| <b>ENTER DESCRIPTION</b><br>ELEC NO: JAU2013-1018<br>DRAWN BY: CHYK<br>APPR: WJOSH<br>2013/01/16 | QUALITY SYMBOLS<br>∇=0<br>∇=0<br>∇=0  | GENERAL TOLERANCES (UNLESS SPECIFIED)<br>4 PLACES ± 0.10 mm<br>3 PLACES ± 0.15 mm<br>2 PLACES ± 0.20 mm<br>1 PLACE ± 0.30 mm<br>0 PLACE ± 0.50 mm | DIMENSION STYLE<br>MM ONLY | SCALE<br>DESIGN UNITS<br>METRIC | THIRD ANGLE PROJECTION                                 |
|  | MATERIAL NO.<br>SEE BOM   | DATE<br>06-13-02  | DATE<br>06-13-02           | DATE<br>06-13-02                | TITLE<br>MX150 2X4 RECEPTACLE SEALED ASSEMBLY MAT SEAL |
|  | DRAFT WHERE APPLICABLE MUST REMAIN WITHIN DIMENSIONS  | ANGULAR ± 3°  | APPROVED BY<br>FHOLUB      | DOCUMENT NO.<br>SD-33472-081    | SHEET NO.<br>9 OF 9                                    |
|  | THIS DRAWING CONTAINS INFORMATION THAT IS PROPRIETARY TO MOLEX INCORPORATED AND SHOULD NOT BE USED WITHOUT WRITTEN PERMISSION |   |                            |                                 |  |