



Chipsmall Limited consists of a professional team with an average of over 10 year of expertise in the distribution of electronic components. Based in Hongkong, we have already established firm and mutual-benefit business relationships with customers from,Europe,America and south Asia,supplying obsolete and hard-to-find components to meet their specific needs.

With the principle of “Quality Parts,Customers Priority,Honest Operation,and Considerate Service”,our business mainly focus on the distribution of electronic components. Line cards we deal with include Microchip,ALPS,ROHM,Xilinx,Pulse,ON,Everlight and Freescale. Main products comprise IC,Modules,Potentiometer,IC Socket,Relay,Connector.Our parts cover such applications as commercial,industrial, and automotives areas.

We are looking forward to setting up business relationship with you and hope to provide you with the best service and solution. Let us make a better world for our industry!



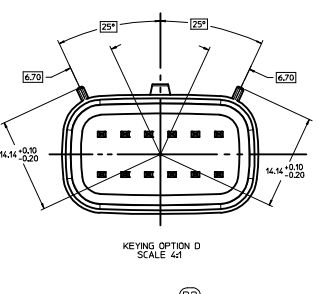
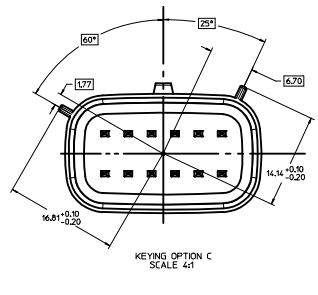
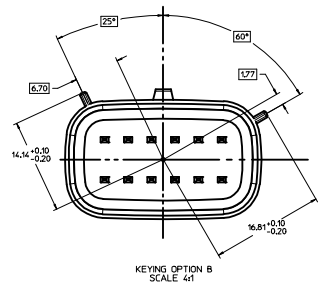
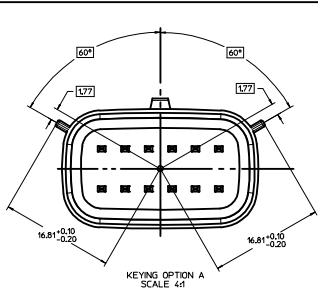
Contact us

Tel: +86-755-8981 8866 Fax: +86-755-8427 6832

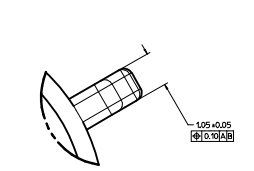
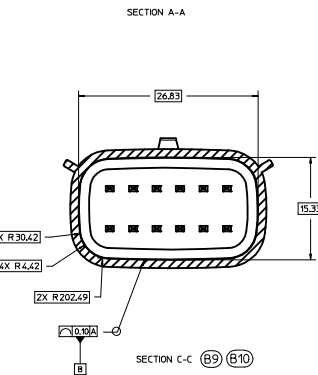
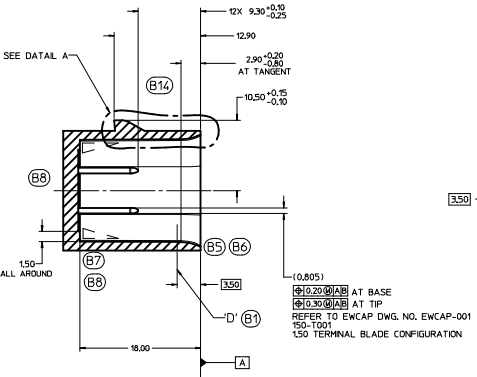
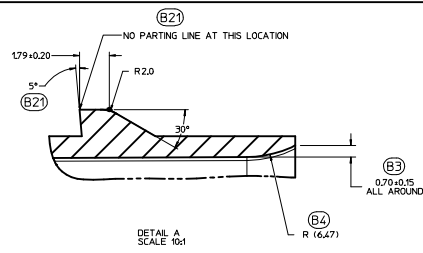
Email & Skype: info@chipsmall.com Web: www.chipsmall.com

Address: A1208, Overseas Decoration Building, #122 Zhenhua RD., Futian, Shenzhen, China

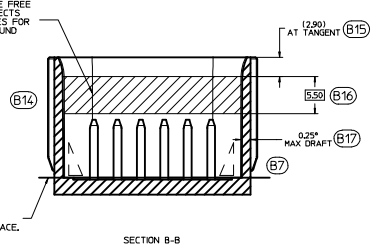
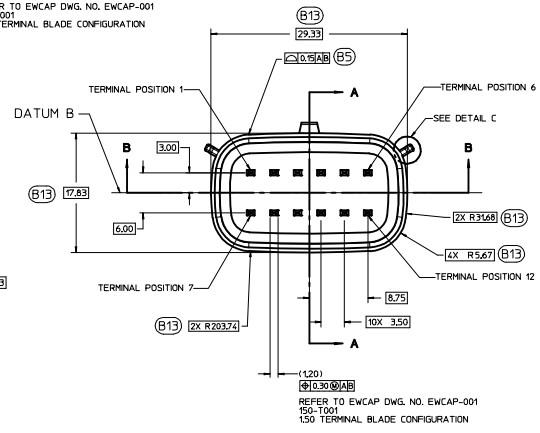
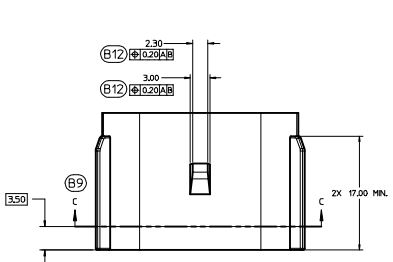
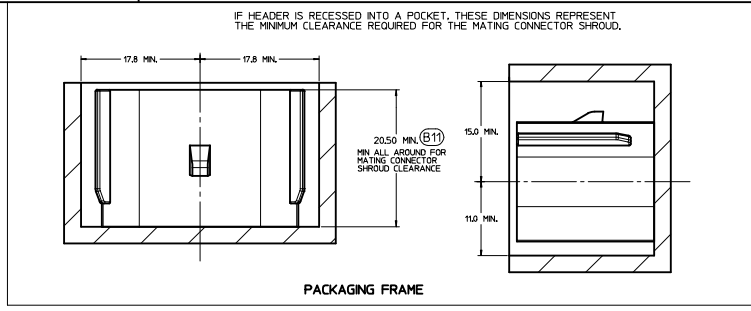




150-S-012-2-D01	D	BLACK
150-S-012-2-C01	C	DK GRAY
150-S-012-2-B01	B	LT GRAY
150-S-012-2-A01	A	BLACK
EWCAP P/N	OPTION	MATING CONNECTOR COLOR

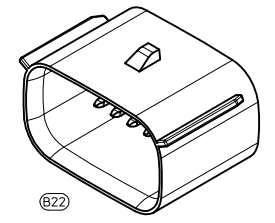


CONSTRUCTION BELOW THIS SURFACE IS NOT CONTROLLED BY EWCAP. NO PLASTIC FEATURES MAY EXTEND ABOVE THIS SURFACE.



NOTICE
THIS DRAWING OR PORTIONS OF IT, ARE CONTROLLED BY THE ELECTRICAL WIRING COMPONENTS APPLICATION PARTNERSHIP (EWCAP), A SUBGROUP OF THE UNITED STATES CONSORTIUM FOR AUTOMOTIVE RESEARCH (USCAR), USCAR IS A PARTNERSHIP BETWEEN CHRYSLER GROUP LLC, FORD MOTOR COMPANY, AND GENERAL MOTORS CORPORATION ANY CHANGE TO A EWCAP CONTROLLED PORTION OF THIS DRAWING, INCLUDING A REVISION CHANGE, MUST BE APPROVED, IN WRITING, BY THE RESPONSIBLE EWCAP MEMBER FROM EACH USCAR COMPANY. EACH EWCAP MEMBER AUTHORIZED TO SIGN FOR HIS OR HER COMPANY IS RESPONSIBLE FOR OBTAINING ALL NECESSARY APPROVALS WITHIN THAT COMPANY PRIOR TO SIGNING FOR APPROVAL OF THE CHANGE. EWCAP EXPRESSLY PROHIBITS ANY PARTY FROM CHANGING OR ANY ASSOCIATED TOOLING BEFORE RECEIVING AN APPROVAL SIGNED BY AN AUTHORIZED REPRESENTATIVE FROM EACH EWCAP PARTNER. REFERENCE TO THE SIGNED APPROVAL FORM MUST BE ENTERED IN THIS DRAWING'S CONTROL COLUMN.

- NOTES: UNLESS OTHERWISE SPECIFIED (B18)**
- ALL DIMENSIONS SHOWN IN MILLIMETERS.
 - DIMENSIONING AND TOLERANCING PER ASME Y14.5M-1994
 - 0.25 RADI ON ALL CORNERS SHOWN SHARP.
 - UNSPECIFIED RADI: 0.25 EXCEPT AS NOTED.
 - STANDARD COLORS FOR POLARIZATION (SEE CHART). DEVIATION REQUIRES APPROVAL OF AUTHORIZED PERSON.
 - REFER TO "SAE/USCAR 12 CONNECTOR GUIDELINES" FOR ADDITIONAL REQUIREMENTS.
 - EXCEPT WHERE NOTED, DRAFT ON OUTSIDE SURFACES IS PERMISSIBLE WITH TOLERANCE.
 - Symbol indicates DRAFT DIRECTION.
 - FOR TERMINAL MATERIAL, DIMENSIONAL, AND COATING REQUIREMENTS AND ANY BLADE TERMINAL DESIGN INFORMATION NOT SHOWN ON THIS DRAWING SEE EWCAP DPM, NO. EWCAP-001
 - A FULL SHROUD ON THE MATING CONNECTOR IS REQUIRED TO INSURE THAT THE CONNECTOR-HEADER POLARIZATION FEATURES OPTIONS A THRU D WILL FUNCTION THE FULL SHROUD ALSO PREVENTS SCOOP DAMAGE TO THE HEADER PINS. REFER TO "SAE/USCAR-12 CONNECTOR DESIGN GUIDE LINES" FOR ADDITIONAL INFORMATION.
 - REFER TO USCAR/EWCAP PART LIST AS FOUND ON WEBSITE <http://www.uscar.team.org>
 - THIS IS A 100% CAD GENERATED PART. THE CAD MATHEMATICAL DATA IS THE MASTER FOR THIS PART. FOR DIMENSIONAL OR ANY INFORMATION NOT SHOWN ON THIS DRAWING, ANALYZE THE CAD MODEL.



REV	DATE	BY	CHK	DESCRIPTION
095	B22			CHANGED ISO VIEW SCALE TO 4:1 WAS 1:1
095	B21			ADDED PARTING LINE NOTE TO DETAIL A. ALL DIMENSIONS ARE IN MILLIMETERS
095	B20			REVISED NOTE BACK ANGLE OPTIONAL FROM 5°
095	B19			CORRECTED CHRYSLER GROUP LLC NOMENCLATURE
095	B19			MOVED NOTE TO SECTION B-B
095	B18			UPDATED NOTES
095	B17			ADDED 0.25° MAX DRAFT ANGLE ALL AROUND
095	B16			ADDED 15.50
095	B15			ADDED AT TANGENT NOTE
095	B14			REMOVED DATUM D
095	B13			ADDED BASIC DIMENSIONS FOR PROFILE CONTROL
095	B12			ADDED 16.020 (B12)
095	B11			DIMENSIONED TO DATUM A
095	B10			SEALING SURFACE DIMENSIONS MOVED TO SECTION C-C
095	B9			ADDED SECTION C-C
095	B8			REMOVED 15.20 AND 2.50 FROM SECTION A-A
095	B7			ADDED DRAFT ANGLE DIRECTION
095	B6			REMOVED 0.80 +0.00/-0.20 ALL AROUND
095	B5			REVISED WALL THICKNESS CONTROL WITH PROFILE OF A SURFACE
095	B4			ADDED R16.47
095	B3			ADDED 0.70 +0.15 ALL AROUND
095	B2			UPDATED CONNECTOR COLORS
095	B1			SURFACE 17 RELOCATED TO 15.50 WAS AT 8.20

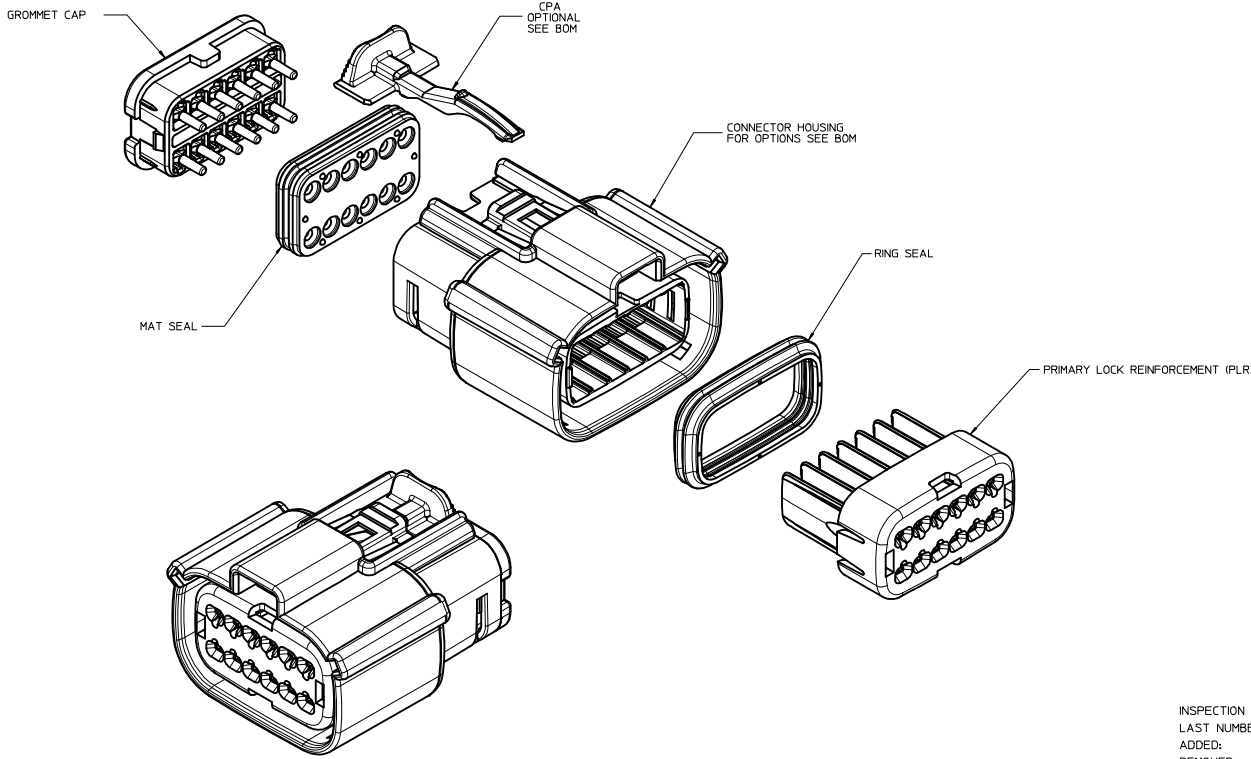
LET	REVISION RECORD	DATE	DWN	CHK
A	RELEASED	10-31-02	DG	JC

TOLERANCES UNLESS OTHERWISE SPECIFIED		1000 ANGLE PRECISION	
DIMENSIONS ARE IN	MILLIMETERS	ANGLES	
X	+0.2	° 30'	
		° 00'	° 00'

EWCAP		1000 ANGLE PRECISION	
SCALE 4 - 1	DRAWN BY K.CUNNINGHAM	DESIGNED BY M.VANSLAMBROUCK	DATE 03-21-12
TITLE DIRECT CONNECT INTERFACE			
12 WAY (2 X 6) 1.5MM SEALED MALE			
SHEET 1 OF 1	DRWG NUMBER 150-S-012-2-Z01	REV E	DO NOT SCALE DIMENSIONS UNLESS OTHERWISE NOTED
			REVISION LEVEL B



TABLE OF CONTENTS	
SHEET NO.	SHEET DESCRIPTION
1	NOTES
2	KEY CONFIGURATIONS
3	RECEPTACLE SEALED ASSEMBLY
4	BACKSHELL NOTES
5	BACKSHELL
6	BACKSHELL CONFIGURATIONS
7-9	BOM



NOTES: VALID UNLESS OTHERWISE SPECIFIED

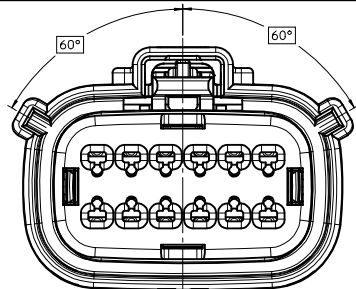
1. GENERAL:
 - a. APPLICATION SPECIFICATION SEE: AS-33472-100
 -CONTAINS: PRODUCT INTRODUCTION, PRODUCT SUMMARY, CONNECTOR ASSEMBLY, PACKAGING INFORMATION, CONNECTOR MATING, SERVICE INSTRUCTIONS, ELECTRICAL CONTINUITY CHECKING, CRIMPING, AND TROUBLESHOOTING.
 -DESIGNED TO MATE WITH DEVICE CONNECTION AS SPECIFIED IN DRAWING EWCAP 150-S-012-2-201, AVAILABLE AT <http://ewcap.uscarteams.org/>.
 -DESIGNED TO MATE WITH BLADE SEALED ASSEMBLY AS SPECIFIED IN DRAWING SD-33482-121
 -FOR 1.5mm RECEPTACLE TERMINALS TO BE USED WITH THIS ASSEMBLY, SEE MOLEX DRAWING SD-33012-002.
 -SYSTEM TO BE USED WITH WIRE WITHIN DIAMETER RANGE OF 12 mm TO 2.69 mm.
 -ASSEMBLY SHIPPED WITH PLR AND CPA IN PRE-LOCK POSITION (SEE SECTION Z-Z PRE-LOCK).
 -IN THE EVENT THAT THE PLR IS FOUND IN THE SEATED (FINAL LOCK) POSITION, REFER TO MOLEX SPECIFICATION PS-34646-001, AVAILABLE AT www.molex.com <http://www.molex.com>.
 -ASSEMBLY CONFORMS TO SAE/USCAR-2 REV.4 WITH THE FOLLOWING EXCEPTIONS: ENGAGEMENT FORCE TO MOVE CPA FROM PRE-LOCK TO FINAL LOCK POSITION WHEN UNMATED: 40N MIN. DISENGAGEMENT FORCE TO MOVE CPA FROM FINAL LOCK TO PRE-LOCK POSITION: 3N MIN, 40N MAX. TERMINAL INSERTION FORCE FOR WIRE DIAMETER ABOVE 2.5mm NOT EXCEEDING 2.69mm SHALL NOT EXCEED 40 NEWTONS.
 - b. PRODUCT SPECIFICATION SEE: PS-33472-000
 CONTAINS: PRODUCT INTRODUCTION, PRODUCT SUMMARY, RATINGS (CURRENT, TEMPERATURE, SEALING, AND FLAMMABILITY), AND PRODUCT VALIDATION.
 - c. PACKAGING SPECIFICATION PER MOLEX DRAWING: PK-31300-903
 - d. PARTS MUST BE IN COMPLIANCE TO MOLEX CHEMICAL SUBSTANCES FOR PRODUCTS AND PACKAGING SPECIFICATION ES-40000-5016
 - e. DATA MUST BE SUBMITTED UNDER THE MOLEX PART NUMBER TO IMDS (COMPANY ID#13255)
 - f. FOR INFORMATION ON 2X6 RECEPTACLE SEALED ASSEMBLY WITH CLIP/SLOT SEE SD-33472-131
2. DESIGN - MATERIALS:
 - a. SEE BOM TABLE
3. DESIGN - GEOMETRY:
 - a. THIS IS A 100% CAD GENERATED PART. THE CAD MATHEMATICAL DATA IS THE MASTER FOR THIS PART. FOR DIMENSIONAL OR ANY INFORMATION NOT SHOWN ON THIS DRAWING, ANALYZE THE CAD MODEL.
 - b. GEOMETRIC DIMENSIONS AND TOLERANCES PER ASME Y14.5M - 1994
 - c. EDGES AND UNDIMENSIONED DETAILS PER ISO13715
 - d. CORNERS SHOWN AS SHARP TO BE R 0.2 MAX.
 - e. LETTERING SHALL BE 0.5 MAX RAISED IN 0.25 MAX RECESS PAD. THIS INCLUDES RECYCLING CODE, CAVITY ID, VENDOR IDENTIFICATION, AND CUSTOMER MATERIAL NUMBER.
 - f. VISUAL DEFECTS SHALL MEET COSMETIC STANDARD PS-45499-002 (Class B).
 - g. LASER MARKING: TBD

INSPECTION LOG
 LAST NUMBER USED:
 ADDED:
 REMOVED:

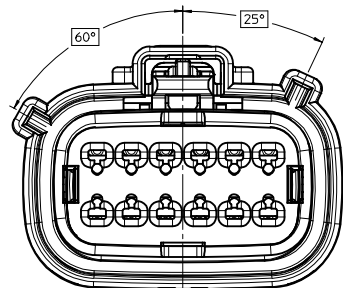
T5	RENAMED BACKSHELLS
T4	ADD NEW P/N 33472-1283 33472-1284 33472-1285
T3	ADDED CPA CALL OUT TO P/N 33472-1282
T2	ADD NEW P/N 33472-1282
T1	ADDED BACKSHELLS
T	ADD NEW P/N 33472-1281
S	ADD NEW P/N 33472-1279 33472-1280
R	ADD NEW P/N 33472-1278
O	REDRAWN
REV	DESCRIPTION

ENTER DESCRIPTION DEC NO: UAU2013-1404 DRAWN BY: DRWNGDAHALL CHYD: 2013/03/06 APPROV: C.LISLE DESCRIPTION: 2013/03/07	QUALITY SYMBOLS	GENERAL TOLERANCES (UNLESS SPECIFIED)	DIMENSION STYLE	SCALE	DESIGN UNITS	TITLE	SHEET NO. 1 OF 9
	$\nabla=0$ $\nabla=0$ $\nabla=0$	mm INCH 4 PLACES ± --- ± --- 3 PLACES ± --- ± --- 2 PLACES ± 0.10 ± --- 1 PLACE ± 0.3 ± --- 0 PLACE ± ± ---	MM ONLY	3:1	METRIC	THIRD ANGLE PROJECTION MX150 2X6 RECEPTACLE SEALED ASSEMBLY MAT SEAL molex SD-33472-121	
	ANGULAR ± 3 ° DRAFT WHERE APPLICABLE MUST REMAIN WITHIN DIMENSIONS	MATERIAL NO.	DATE	DATE	DATE	DATE	
		SEE BOM	D. MARCOUX 06-13-02	D. GRIFFITHS 06-13-02	F. HOLUB 06-13-02		

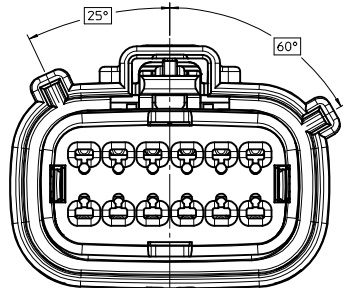
KEY CONFIGURATIONS



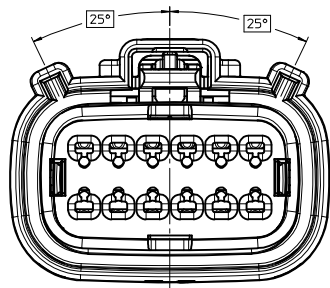
KEY A



KEY B



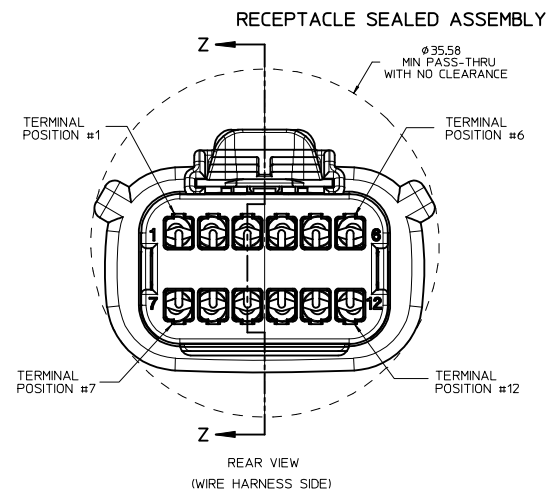
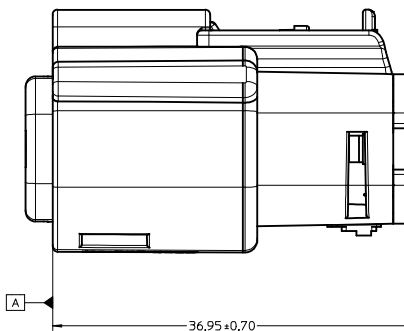
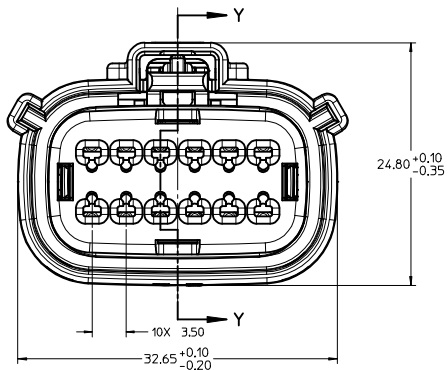
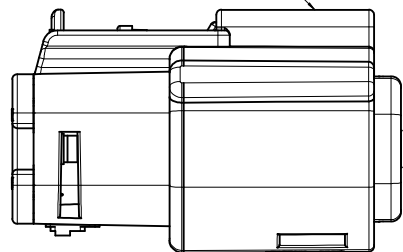
KEY C



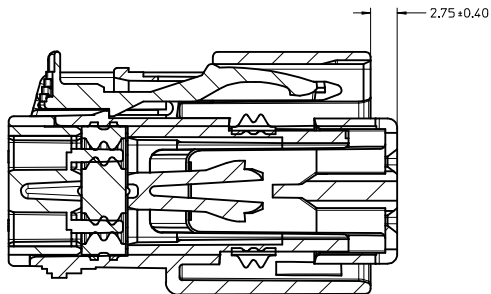
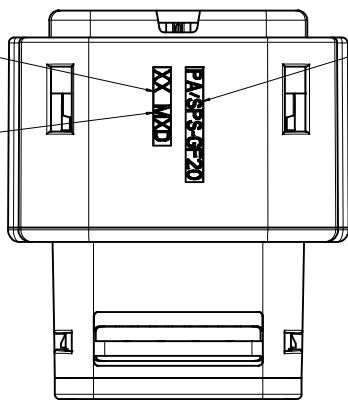
KEY D

ENTER DESCRIPTION DEC NO: UAU2013-1404 DRAWN BY: DRWNGHALL CHYK: 2013/03/06 APPROV: LLSLE APPR: DC LLSLE 2013/03/07	QUALITY SYMBOLS ∇=0 ∇=0 ∇=0	GENERAL TOLERANCES (UNLESS SPECIFIED)		DIMENSION STYLE MM ONLY	SCALE 4:1	DESIGN UNITS METRIC	THIRD ANGLE PROJECTION
		4 PLACES ± --- ± --- 3 PLACES ± --- ± --- 2 PLACES ± 0.10 ± --- 1 PLACE ± 0.3 ± --- 0 PLACE ± ±	mm INCH ± ± ± ± ± ± ± ±	DRAWN BY: D. MARCOUX DATE: 06-13-02 CHECKED BY: D. GRIFFITHS DATE: 06-13-02 APPROVED BY: F. HOLUB DATE: 06-13-02	TITLE MX150 2X6 RECEPTACLE SEALED ASSEMBLY MAT SEAL	MATERIAL NO. SEE BOM	DOCUMENT NO. SD-33472-121

LASER MARKING ON THIS SURFACE
SEE NOTE 3g.

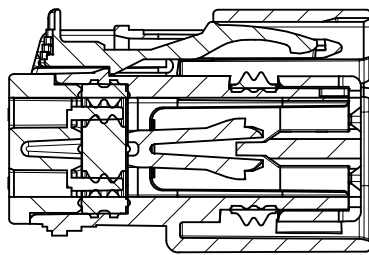


MOLD CAVITY CODE
LOCATION CODE
RECYCLE CODE



PRIMARY LOCK REINFORCEMENT (PLR) SHOWN
IN PRE-STAGE POSITION

SECTION Z-Z



PRIMARY LOCK REINFORCEMENT (PLR) SHOWN
IN FINAL-LOCK POSITION

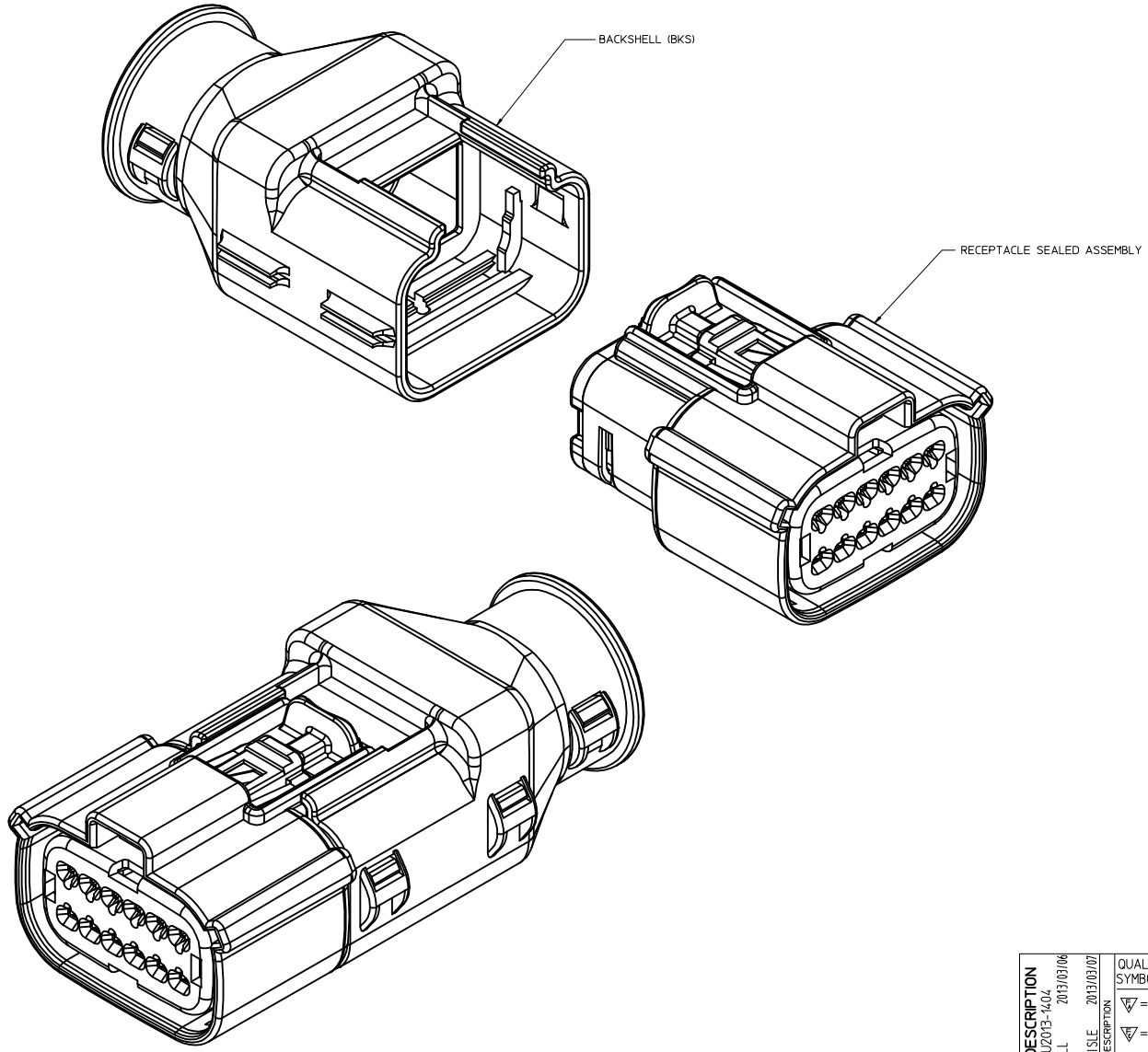
SECTION Y-Y

ENTER DESCRIPTION IEC NO: UAU2013-1404 DRAWN BY: DRWNGRHALL CHKD: APPR:DC LLSLE 2013/03/06 2013/03/07	QUALITY SYMBOLS	GENERAL TOLERANCES (UNLESS SPECIFIED)	DIMENSION STYLE	SCALE	DESIGN UNITS	THIRD ANGLE PROJECTION	
	∇=0 ∇=0 ∇=0	mm INCH 4 PLACES ± --- ± --- 3 PLACES ± --- ± --- 2 PLACES ± 0.10 ± --- 1 PLACE ± 0.3 ± --- 0 PLACE ± ±	MM ONLY	4:1	METRIC	DRAWN BY: D. MARCOUX DATE: 06-13-02 CHECKED BY: D. GRIFFITHS DATE: 06-13-02 APPROVED BY: F. HOLUB DATE: 06-13-02	TITLE: MX150 2X6 RECEPTACLE SEALED ASSEMBLY MAT SEAL molex DOCUMENT NO: SD-33472-121
	ANGULAR ± 3 ° DRAFT WHERE APPLICABLE MUST REMAIN WITHIN DIMENSIONS	MATERIAL NO.	SIZE	SEE BOM		SHEET NO.	3 OF 9
	THIS DRAWING CONTAINS INFORMATION THAT IS PROPRIETARY TO MOLEX INCORPORATED AND SHOULD NOT BE USED WITHOUT WRITTEN PERMISSION						

BACKSHELL NOTES

BACKSHELL NOTES: VALID UNLESS OTHERWISE SPECIFIED

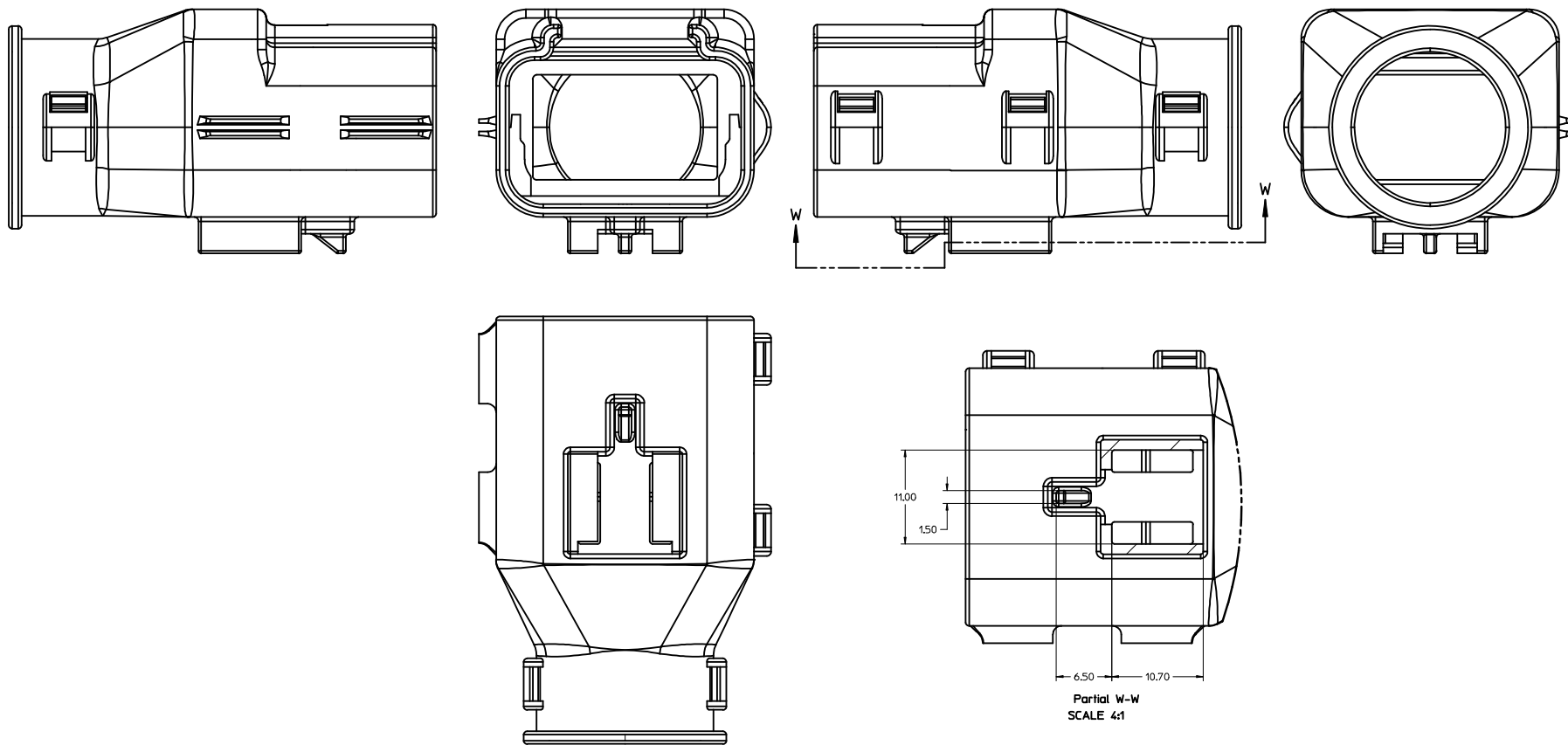
1. GENERAL:
 - a. APPLICATION SPECIFICATION SEE: AS-*****TBD*****
 -DESIGNED TO MATE WITH RECEPTACLE SEALED ASSEMBLY SPECIFIED IN MOLEX DRAWING SD-33472-121.
 -SYSTEM TO BE USED WITH WIRE WITHIN DIAMETER RANGE OF TBDmm TO TBDmm.
 -COMPONENTS ARE OPTIONAL AND MUST BE PURCHASED SEPARATELY
 -BACKSHELL DESIGN IS OWNED BY SCHLEMMER
 - b. PRODUCT SPECIFICATION SEE: PS-*****TBD*****
 - c. PACKAGING SPECIFICATION PER MOLEX DRAWING: PK-*****TBD*****
 - d. PARTS MUST BE IN COMPLIANCE TO MOLEX CHEMICAL SUBSTANCES FOR PRODUCTS AND PACKAGING SPECIFICATION: ES-40000-5016
 - e. DATA MUST BE SUBMITTED UNDER THE MOLEX PART NUMBER TO IMDS (COMPANY ID#13255)
2. DESIGN - MATERIALS:
 - a. PA66 0% GLASS FILLED
 - b. BLACK
3. DESIGN - GEOMETRY:
 - a. THIS IS A 100% CAD GENERATED PART. THE CAD MATHEMATICAL DATA IS THE MASTER FOR THIS PART. FOR DIMENSIONAL OR ANY INFORMATION NOT SHOWN ON THIS DRAWING, ANALYZE THE CAD MODEL.
 - b. GEOMETRIC DIMENSIONS AND TOLERANCES PER ASME Y14.5M - 2009
 - c. EDGES AND UNDIMENSIONED DETAILS PER ISO13715
 - d. CORNERS SHOWN AS SHARP TO BE R 0.2 MAX.
 - e. VISUAL DEFECTS SHALL MEET COSMETIC STANDARD PS-45499-002 (Class B).



ENTER DESCRIPTION DEC NO: UAU2013-1404 DRAWN BY: DRW:DAHALL CHYK: APPR:DC LLSLE 2013/03/06 2013/03/07	QUALITY SYMBOLS	GENERAL TOLERANCES (UNLESS SPECIFIED)	DIMENSION STYLE	SCALE	DESIGN UNITS	THIRD ANGLE PROJECTION
	▽=0	4 PLACES ± mm ± INCH	MM ONLY	4:1	METRIC	☉
	▽=0	3 PLACES ± 0.10 ± ---	DRAWN BY DATE			
	▽=0	2 PLACES ± 0.3 ± ---	D. MARCOUX 06-13-02			
		1 PLACE ± ---	CHECKED BY DATE			
		0 PLACE ± ---	D. GRIFFITHS 06-13-02			
			APPROVED BY DATE			
			F. HOLUB 06-13-02			
			MATERIAL NO.			
			SEE BOM			
			DOCUMENT NO.			
			SD-33472-121			
			SHEET NO.			
			4 OF 9			

20 19 18 17 16 15 14 13 12 11 10 9 8 7 6 5 4 3 2 1

BACKSHELL

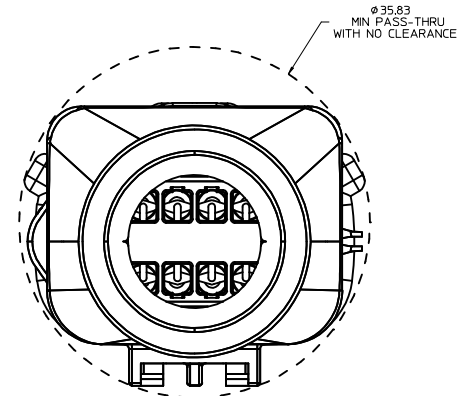
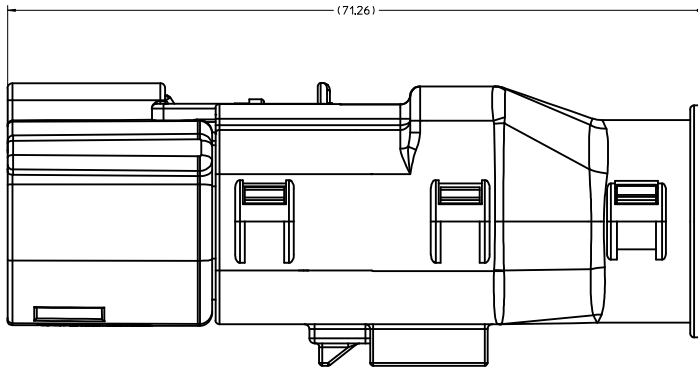


ENTER DESCRIPTION DEC NO: UAU2013-1404 DRAWN BY: DRW:DAHALL CHKD: APPR:DC LISLE 2013/03/06 2013/03/07	QUALITY SYMBOLS ∇=0 ∇=0 ∇=0	GENERAL TOLERANCES (UNLESS SPECIFIED) <table border="1"> <thead> <tr> <th></th> <th>mm</th> <th>INCH</th> </tr> </thead> <tbody> <tr> <td>4 PLACES</td> <td>± .10</td> <td>± .004</td> </tr> <tr> <td>3 PLACES</td> <td>± .15</td> <td>± .006</td> </tr> <tr> <td>2 PLACES</td> <td>± 0.10</td> <td>± .004</td> </tr> <tr> <td>1 PLACE</td> <td>± 0.3</td> <td>± .012</td> </tr> <tr> <td>0 PLACE</td> <td>± .</td> <td>± .</td> </tr> </tbody> </table> ANGULAR ± 3 ° DRAFT WHERE APPLICABLE MUST REMAIN WITHIN DIMENSIONS		mm	INCH	4 PLACES	± .10	± .004	3 PLACES	± .15	± .006	2 PLACES	± 0.10	± .004	1 PLACE	± 0.3	± .012	0 PLACE	± .	± .	DIMENSION STYLE MM ONLY	DRAWN BY: D. MARCOUX CHECKED BY: D. GRIFFITHS APPROVED BY: F. HOLUB DATE: 06-13-02 DATE: 06-13-02 DATE: 06-13-02	SCALE: 4:1 DESIGN UNITS: METRIC THIRD ANGLE PROJECTION	TITLE: MX150 2X6 RECEPTACLE SEALED ASSEMBLY MAT SEAL molex	MATERIAL NO: SEE BOM DOCUMENT NO: SD-33472-121	SHEET NO: 5 OF 9
		mm	INCH																							
	4 PLACES	± .10	± .004																							
	3 PLACES	± .15	± .006																							
2 PLACES	± 0.10	± .004																								
1 PLACE	± 0.3	± .012																								
0 PLACE	± .	± .																								
THIS DRAWING CONTAINS INFORMATION THAT IS PROPRIETARY TO MOLEX INCORPORATED AND SHOULD NOT BE USED WITHOUT WRITTEN PERMISSION																										
SIZE D																										
SEE BOM																										

19 18 17 16 15 14 13 12 11 10 9 8 7 6 5 4 3 2 1

20 19 18 17 16 15 14 13 12 11 10 9 8 7 6 5 4 3 2 1

BACKSHELL CONFIGURATIONS



RECEPTACLE SEALED ASSEMBLY WITH RECEPTACLE BACKSHELL

ENTER DESCRIPTION DEC NO: UAU2013-1404 DRAWN BY: DRWNS/DAHALL CHKD: LJSLE APPR: DC LJSLE 2013/03/06 2013/03/07	QUALITY SYMBOLS ∇=0 ∇=0 ∇=0	GENERAL TOLERANCES (UNLESS SPECIFIED)		DIMENSION STYLE MM ONLY	SCALE 4:1	DESIGN UNITS METRIC	THIRD ANGLE PROJECTION
		4 PLACES ± .005 ± .0005 3 PLACES ± .005 ± .0005 2 PLACES ± 0.10 ± .005 1 PLACE ± 0.3 ± .005 0 PLACE ± ±	mm INCH	DRAWN BY: D. MARCOUX DATE: 06-13-02 CHECKED BY: D. GRIFFITHS DATE: 06-13-02 APPROVED BY: F. HOLUB DATE: 06-13-02	TITLE MX150 2X6 RECEPTACLE SEALED ASSEMBLY MAT SEAL		
		ANGULAR ± 3 ° DRAFT WHERE APPLICABLE MUST REMAIN WITHIN DIMENSIONS		MATERIAL NO. SEE BOM	DOCUMENT NO. SD-33472-121	SHEET NO. 6 OF 9	
		THIS DRAWING CONTAINS INFORMATION THAT IS PROPRIETARY TO MOLEX INCORPORATED AND SHOULD NOT BE USED WITHOUT WRITTEN PERMISSION					

19 18 17 16 15 14 13 12 11 10 9 8 7 6 5 4 3 2 1

ASSEMBLY DESCRIPTION	ASSEMBLY PART NUMBER	A	B	C	D	CPA	1	2	3	4	5	6	7	8	9	10	11	12	STATUS	COMMENTS	OPTIONAL ATTACHMENTS SOLD SEPERATELY		
VOID KEY	33472-1240																			NOT RECOMMENDED		OK TO TOOL	OK TO TOOL
KEY D W/CPA, GREEN	33472-1239				D	CPA	1					6	7							NOT RECOMMENDED		OK TO TOOL	OK TO TOOL
KEY C W/CPA, BROWN	33472-1238				C	CPA	1					6	7							NOT RECOMMENDED		OK TO TOOL	OK TO TOOL
KEY B W/CPA, LIGHT GRAY	33472-1237				B	CPA	1					6	7							SALEABLE		OK TO TOOL	OK TO TOOL
KEY A W/CPA, BLACK	33472-1236	A				CPA	1					6	7							SALEABLE		OK TO TOOL	OK TO TOOL
VOID KEY	33472-1235																						
KEY D, GREEN	33472-1234				D		1					6	7							NOT RECOMMENDED		OK TO TOOL	OK TO TOOL
KEY C, BROWN	33472-1233				C		1					6	7							NOT RECOMMENDED		OK TO TOOL	OK TO TOOL
KEY B, LIGHT GRAY	33472-1232				B		1					6	7							SALEABLE		OK TO TOOL	OK TO TOOL
KEY A, BLACK	33472-1231	A					1					6	7							SALEABLE		OK TO TOOL	OK TO TOOL
VOID KEY	33472-1230																						
KEY D W/CPA, GREEN	33472-1229				D	CPA						6	7							NOT RECOMMENDED		OK TO TOOL	OK TO TOOL
KEY C W/CPA, BROWN	33472-1228				C	CPA						6	7							NOT RECOMMENDED		OK TO TOOL	OK TO TOOL
KEY B W/CPA, LIGHT GRAY	33472-1227				B	CPA						6	7							SALEABLE		OK TO TOOL	OK TO TOOL
KEY A W/CPA, BLACK	33472-1226	A				CPA						6	7							SALEABLE		OK TO TOOL	OK TO TOOL
VOID KEY	33472-1225																						
KEY D, GREEN	33472-1224				D							6	7							NOT RECOMMENDED		OK TO TOOL	OK TO TOOL
KEY C, BROWN	33472-1223				C							6	7							NOT RECOMMENDED		OK TO TOOL	OK TO TOOL
KEY B, LIGHT GRAY	33472-1222				B							6	7							SALEABLE		OK TO TOOL	OK TO TOOL
KEY A, BLACK	33472-1221	A										6	7							SALEABLE		OK TO TOOL	OK TO TOOL
VOID KEY	33472-1220																						
KEY D W/CPA, GREEN	33472-1219				D	CPA						6								NOT RECOMMENDED		OK TO TOOL	OK TO TOOL
KEY C W/CPA, BROWN	33472-1218				C	CPA						6								NOT RECOMMENDED		OK TO TOOL	OK TO TOOL
KEY B W/CPA, LIGHT GRAY	33472-1217				B	CPA						6								SALEABLE		OK TO TOOL	OK TO TOOL
KEY A W/CPA, BLACK	33472-1216	A				CPA						6								SALEABLE		OK TO TOOL	OK TO TOOL
VOID KEY	33472-1215																						
KEY D, GREEN	33472-1214				D							6								NOT RECOMMENDED		OK TO TOOL	OK TO TOOL
KEY C, BROWN	33472-1213				C							6								NOT RECOMMENDED		OK TO TOOL	OK TO TOOL
KEY B, LIGHT GRAY	33472-1212				B							6								SALEABLE		OK TO TOOL	OK TO TOOL
KEY A, BLACK	33472-1211	A										6								SALEABLE		OK TO TOOL	OK TO TOOL
VOID KEY	33472-1210																						
KEY D W/CPA, GREEN	33472-1209				D	CPA														NOT RECOMMENDED	SEE P/N 33472-1260	OK TO TOOL	OK TO TOOL
KEY C W/CPA, BROWN	33472-1208				C	CPA														NOT RECOMMENDED	SEE P/N 33472-1259	OK TO TOOL	OK TO TOOL
KEY B W/CPA, LIGHT GRAY	33472-1207				B	CPA														SALEABLE		OK TO TOOL	OK TO TOOL
KEY A W/CPA, BLACK	33472-1206	A				CPA														SALEABLE		OK TO TOOL	OK TO TOOL
VOID KEY	33472-1205																						
KEY D, GREEN	33472-1204				D															NOT RECOMMENDED	SEE P/N 33472-1254	OK TO TOOL	OK TO TOOL
KEY C, BROWN	33472-1203				C															NOT RECOMMENDED	SEE P/N 33472-1253	OK TO TOOL	OK TO TOOL
KEY B, LIGHT GRAY	33472-1202				B															SALEABLE		OK TO TOOL	OK TO TOOL
KEY A, BLACK	33472-1201	A																		SALEABLE		OK TO TOOL	OK TO TOOL

BLOCKED TERMINAL
 CAVITY WITH A NUMBER INDICATES BLOCKED TERMINAL POSITION
 CAVITY WITHOUT A NUMBER INDICATES OPEN TERMINAL POSITION

DESCRIPTION	COLOR	MATERIAL
MAT SEAL	LIGHT BLUE	INHERENTLY LUBRICATED SILICONE
RING SEAL	GREEN	INHERENTLY LUBRICATED SILICONE
PLR	NATURAL	SPS/NYLON GF20
GROMMET CAP	BLACK	SPS/NYLON GF20
CPA	RED	PBT GF20
HOUSING KEYING OPTION D	STONE GRAY	SPS/NYLON GF20
HOUSING KEYING OPTION C	DARK GRAY	SPS/NYLON GF20
HOUSING KEYING OPTION D	GREEN	SPS/NYLON GF20
HOUSING KEYING OPTION C	BROWN	SPS/NYLON GF20
HOUSING KEYING OPTION B	LIGHT GRAY	SPS/NYLON GF20
HOUSING KEYING OPTION A	BLACK	SPS/NYLON GF20

BOM/APPLICABLE COMPONENTS TABLE

LEGEND TABLE

ABBREVIATION	COMPONENT
A	HOUSING KEY A
B	HOUSING KEY B
C	HOUSING KEY C
D	HOUSING KEY D
GC	GROMMET CAP
M	MAT SEAL
R	RING SEAL
P	PLR
CPA	CPA
BKS	BACKSHELL

ENTER DESCRIPTION IEC NO. UAU2013-1404 DRAWN BY: DRW:DAWALL CHYK: 2013/03/06 APPR:DC LLSLE 2013/03/07 REV: T5	QUALITY SYMBOLS ∇=0 ∇=0 ∇=0	GENERAL TOLERANCES (UNLESS SPECIFIED) DIMENSION STYLE: MM ONLY SCALE: DESIGN UNITS: METRIC THIRD ANGLE PROJECTION	DRAWN BY: MARCOUX DATE: 06-13-02 CHECKED BY: DATE: D. GRIFFITHS 06-13-02 APPROVED BY: DATE: F. HOLUB 06-13-02	TITLE: MX150 2X6 RECEPTACLE SEALED ASSEMBLY MAT SEAL molex MATERIAL NO: SEE BOM DOCUMENT NO: SD-33472-121 SHEET NO: 7 OF 9
	ANGULAR ± 3 ° DRAFT WHERE APPLICABLE MUST REMAIN WITHIN DIMENSIONS	SIZE: D	THIS DRAWING CONTAINS INFORMATION THAT IS PROPRIETARY TO MOLEX INCORPORATED AND SHOULD NOT BE USED WITHOUT WRITTEN PERMISSION	

ASSEMBLY DESCRIPTION	ASSEMBLY PART NUMBER	A	B	C	D	CPA	1	2	3	4	5	6	7	8	9	10	11	12	STATUS	COMMENTS	34951-1210 BKS WITH RIBS	34951-1220 BKS WITHOUT RIBS	
KEY A, BLACK	33472-1281	A					1			4					9			12	SALEABLE		OK TO TOOL	OK TO TOOL	
KEY A, BLACK	33472-1280	A						2					7						SALEABLE		OK TO TOOL	OK TO TOOL	
KEY A, BLACK	33472-1279	A											7				11		SALEABLE		OK TO TOOL	OK TO TOOL	
KEY B W/CPA, LIGHT GRAY	33472-1278	A	B			CPA										10	11		SALEABLE		OK TO TOOL	OK TO TOOL	
KEY A, BLACK	33472-1277	A					1						7					12	SALEABLE		OK TO TOOL	OK TO TOOL	
KEY A, BLACK	33472-1276	A					1					6							SALEABLE		OK TO TOOL	OK TO TOOL	
KEY A, BLACK	33472-1275	A					1	2	3	4	5	6		8					SALEABLE		OK TO TOOL	OK TO TOOL	
KEY A W/CPA, BLACK	33472-1274	A				CPA						6					11	12	SALEABLE		OK TO TOOL	OK TO TOOL	
KEY A, BLACK	33472-1273	A										6			9	10	11	12	SALEABLE		OK TO TOOL	OK TO TOOL	
KEY A W/CPA, BLACK	33472-1272	A				CPA						6			9	10	11	12	SALEABLE		OK TO TOOL	OK TO TOOL	
KEY A W/CPA, BLACK	33472-1271	A				CPA				4		6				10	11	12	SALEABLE		OK TO TOOL	OK TO TOOL	
KEY A W/CPA, BLACK	33472-1270	A				CPA							7		9			11	12	SALEABLE		OK TO TOOL	OK TO TOOL
KEY A W/CPA, BLACK	33472-1269	A				CPA	1	2		4		6	7	8		10	11	12	SALEABLE		OK TO TOOL	OK TO TOOL	
KEY A W/CPA, BLACK	33472-1268	A				CPA	1						7						SALEABLE		OK TO TOOL	OK TO TOOL	
KEY D W/CPA, STONE GRAY	33472-1267	A			D	CPA	1					6	7						SALEABLE		OK TO TOOL	OK TO TOOL	
KEY A W/CPA, BLACK	33472-1266	A				CPA											11	12	SALEABLE		OK TO TOOL	OK TO TOOL	
KEY D W/CPA, STONE GRAY	33472-1265	A			D	CPA												12	SALEABLE		OK TO TOOL	OK TO TOOL	
KEY C W/CPA, DARK GRAY	33472-1264	A			C	CPA												11	12	SALEABLE		OK TO TOOL	OK TO TOOL
KEY B W/CPA, LIGHT GRAY	33472-1263	A	B			CPA												11	12	SALEABLE		OK TO TOOL	OK TO TOOL
KEY A W/CPA, BLACK	33472-1262	A				CPA								8	9	10	11	12	SALEABLE		OK TO TOOL	OK TO TOOL	
KEY A, BLACK	33472-1261	A													9	10			SALEABLE		OK TO TOOL	OK TO TOOL	
KEY D W/CPA, STONE GRAY	33472-1260	A			D	CPA													SALEABLE		OK TO TOOL	OK TO TOOL	
KEY C W/CPA, DARK GRAY	33472-1259	A			C	CPA													SALEABLE		OK TO TOOL	OK TO TOOL	
KEY A, BLACK	33472-1258	A					1	2	3	4	5	6	7	8	9	10	11	12	SALEABLE		OK TO TOOL	OK TO TOOL	
KEY A, BLACK	33472-1257	A												8					SALEABLE		OK TO TOOL	OK TO TOOL	
KEY A W/CPA, BLACK	33472-1256	A				CPA									9	10	11	12	SALEABLE		OK TO TOOL	OK TO TOOL	
KEY A W/CPA, BLACK	33472-1255	A				CPA											11		SALEABLE		OK TO TOOL	OK TO TOOL	
KEY D, STONE GRAY	33472-1254	A			D														SALEABLE		OK TO TOOL	OK TO TOOL	
KEY C, DARK GRAY	33472-1253	A			C														SALEABLE		OK TO TOOL	OK TO TOOL	
KEY A W/CPA, BLACK	33472-1252	A				CPA									9	10			SALEABLE		OK TO TOOL	OK TO TOOL	
KEY A, BLACK	33472-1251	A										6						12	SALEABLE		OK TO TOOL	OK TO TOOL	
VOID KEY	33472-1250																						
KEY D W/CPA, GREEN	33472-1249	A			D	CPA	1					6	7					12	NOT RECOMMENDED		OK TO TOOL	OK TO TOOL	
KEY C W/CPA, BROWN	33472-1248	A			C	CPA	1					6	7					12	NOT RECOMMENDED		OK TO TOOL	OK TO TOOL	
KEY B W/CPA, LIGHT GRAY	33472-1247	A	B			CPA	1					6	7					12	SALEABLE		OK TO TOOL	OK TO TOOL	
KEY A W/CPA, BLACK	33472-1246	A				CPA	1					6	7					12	SALEABLE		OK TO TOOL	OK TO TOOL	
VOID KEY	33472-1245																						
KEY D, GREEN	33472-1244	A			D		1					6	7					12	NOT RECOMMENDED		OK TO TOOL	OK TO TOOL	
KEY C, BROWN	33472-1243	A			C		1					6	7					12	NOT RECOMMENDED		OK TO TOOL	OK TO TOOL	
KEY B, LIGHT GRAY	33472-1242	A	B				1					6	7					12	SALEABLE		OK TO TOOL	OK TO TOOL	
KEY A, BLACK	33472-1241	A					1					6	7					12	SALEABLE		OK TO TOOL	OK TO TOOL	

BOM/APPLICABLE COMPONENTS TABLE		
DESCRIPTION	COLOR	MATERIAL
MAT SEAL	LIGHT BLUE	INHERENTLY LUBRICATED SILICONE
RING SEAL	GREEN	INHERENTLY LUBRICATED SILICONE
PLR	NATURAL	SPS/NYLON GF20
GROMMET CAP	BLACK	SPS/NYLON GF20
CPA	RED	PBT GF20
HOUSING KEYING OPTION D	STONE GRAY	SPS/NYLON GF20
HOUSING KEYING OPTION C	DARK GRAY	SPS/NYLON GF20
HOUSING KEYING OPTION D	GREEN	SPS/NYLON GF20
HOUSING KEYING OPTION C	BROWN	SPS/NYLON GF20
HOUSING KEYING OPTION B	LIGHT GRAY	SPS/NYLON GF20
HOUSING KEYING OPTION A	BLACK	SPS/NYLON GF20

ABBREVIATION	COMPONENT
A	HOUSING KEY A
B	HOUSING KEY B
C	HOUSING KEY C
D	HOUSING KEY D
GC	GROMMET CAP
H	MAT SEAL
R	RING SEAL
P	PLR
CPA	CPA
BKS	BACKSHELL

ENTER DESCRIPTION IEC NO. UAU2013-1404 DRAWN BY: DR.WINDAHALL CHKD: TJS APPR:DC LLSLE 2013/03/06 2013/03/07	QUALITY SYMBOLS ∇=0 ∇=0 ∇=0	GENERAL TOLERANCES (UNLESS SPECIFIED) mm INCH 4 PLACES ±0.10 ±0.004 3 PLACES ±0.15 ±0.005 2 PLACES ±0.20 ±0.008 1 PLACE ±0.30 ±0.012 0 PLACE ±0.50 ±0.020	DIMENSION STYLE MM ONLY	SCALE DESIGN UNITS METRIC	THIRD ANGLE PROJECTION
		DRAFT WHERE APPLICABLE MUST REMAIN WITHIN DIMENSIONS	MATERIAL NO. SEE BOM	DATE 06-13-02 DATE 06-13-02 DATE 06-13-02	TITLE MX150 2X6 RECEPTACLE SEALED ASSEMBLY MAT SEAL

ASSEMBLY DESCRIPTION	ASSEMBLY PART NUMBER	A	B	C	D	CPA	BLOCKED TERMINAL												STATUS	COMMENTS	OPTIONAL ATTACHMENTS SOLD SEPERATELY	
							1	2	3	4	5	6	7	8	9	10	11	12				
KEY A W/CPA, BLACK	33472-1285	A				CPA													SALEABLE		OK TO TOOL	OK TO TOOL
KEY A W/CPA, BLACK	33472-1284	A				CPA	1	2	3	4	5	6							SALEABLE		OK TO TOOL	OK TO TOOL
KEY A W/CPA, BLACK	33472-1283	A				CPA							7					SALEABLE		OK TO TOOL	OK TO TOOL	
KEY A W/CPA, BLACK	33472-1282	A				CPA	1	2					6	7	8				SALEABLE		OK TO TOOL	OK TO TOOL
		A	B	C	D	CPA	1	2	3	4	5	6	7	8	9	10	11	12				

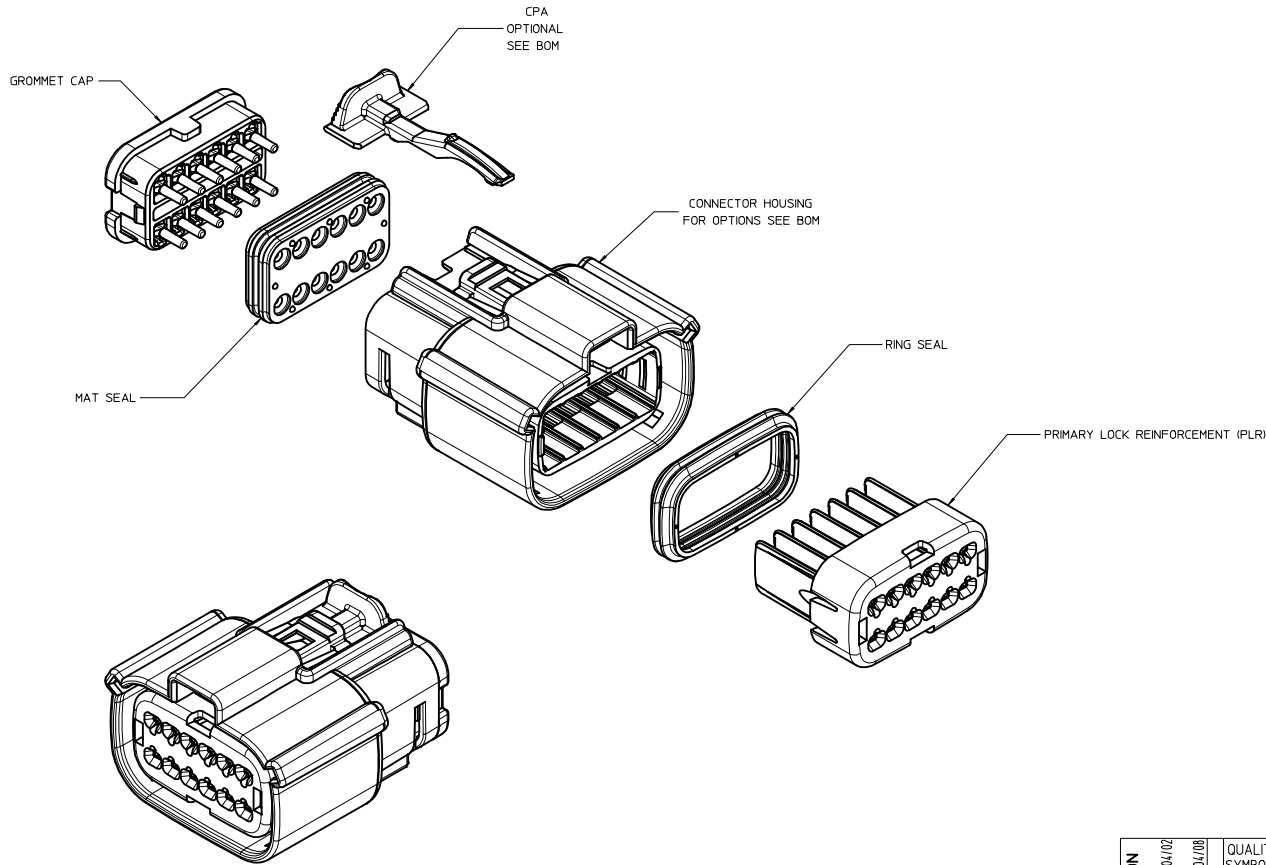
T2
T3
T4

DESCRIPTION	COLOR	MATERIAL
MAT SEAL	LIGHT BLUE	INHERENTLY LUBRICATED SILICONE
RING SEAL	GREEN	INHERENTLY LUBRICATED SILICONE
PLR	NATURAL	SPS/NYLON GF20
GROMMET CAP	BLACK	SPS/NYLON GF20
CPA	RED	PBT GF20
HOUSING KEYING OPTION D	STONE GRAY	SPS/NYLON GF20
HOUSING KEYING OPTION C	DARK GRAY	SPS/NYLON GF20
HOUSING KEYING OPTION D	GREEN	SPS/NYLON GF20
HOUSING KEYING OPTION C	BROWN	SPS/NYLON GF20
HOUSING KEYING OPTION B	LIGHT GRAY	SPS/NYLON GF20
HOUSING KEYING OPTION A	BLACK	SPS/NYLON GF20

ABBREVIATION	COMPONENT
A	HOUSING KEY A
B	HOUSING KEY B
C	HOUSING KEY C
D	HOUSING KEY D
GC	GROMMET CAP
M	MAT SEAL
R	RING SEAL
P	PLR
CPA	CPA
BKS	BACKSHELL

ENTER DESCRIPTION IEC NO. UAU2013-1404 DRAWN BY DRWNSMALL CHYD: APPR:DC LLSLE 2013/03/06 2013/03/07	QUALITY SYMBOLS	GENERAL TOLERANCES (UNLESS SPECIFIED)	DIMENSION STYLE	SCALE	DESIGN UNITS	THIRD ANGLE PROJECTION	
	▽=0	4 PLACES ± mm ± INCH	MM ONLY	2:1	METRIC	☉	
	▽=0	3 PLACES ± 0.10 ± 0.004	D. MARCOUX	DATE	DATE	TITLE	
	▽=0	1 PLACE ± 0.3 ± 0.012	D. GRIFFITHS	06-13-02	06-13-02	MX150 2X6 RECEPTACLE SEALED ASSEMBLY MAT SEAL	
		0 PLACE ± ±	F. HOLUB	06-13-02		molex	
	ANGULAR ± 3 °	DRAFT WHERE APPLICABLE MUST REMAIN WITHIN DIMENSIONS	MATERIAL NO.	DOCUMENT NO.	SHEET NO.		
	SIZE D	SEE BOM	SD-33472-121	9 OF 9			

TABLE OF CONTENTS	
SHEET NO.	SHEET DESCRIPTION
1	NOTES
2	KEY CONFIGURATIONS
3	RECEPTACLE SEALED ASSEMBLY
4	BOM



NOTES: VALID UNLESS OTHERWISE SPECIFIED

1. GENERAL:
 - a. APPLICATION SPECIFICATION SEE: AS-33472-100
 - CONTAINS: PRODUCT INTRODUCTION, PRODUCT SUMMARY, CONNECTOR ASSEMBLY, PACKAGING INFORMATION, CONNECTOR MATING, SERVICE INSTRUCTIONS, ELECTRICAL CONTINUITY CHECKING, CRIMPING, AND TROUBLESHOOTING
 - DESIGNED TO MATE WITH DEVICE CONNECTION AS SPECIFIED IN DRAWING EWCAP 150-5-012-2-201, AVAILABLE AT <http://ewcap.uscarteams.org/>
 - DESIGNED TO MATE WITH BLADE SEALED ASSEMBLY AS SPECIFIED IN DRAWING SD-33482-121
 - FOR 15mm RECEPTACLE TERMINALS TO BE USED WITH THIS ASSEMBLY. SEE MOLEX DRAWING SD-33012-002
 - SYSTEM TO BE USED WITH WIRE WITHIN DIAMETER RANGE OF 1.2 mm TO 2.69 mm.
 - ASSEMBLY SHIPPED WITH PLR AND CPA IN PRE-LOCK POSITION (SEE SECTION Z-Z PRE-LOCK).
 - IN THE EVENT THAT THE PLR IS FOUND IN THE SEATED (FINAL LOCK) POSITION, REFER TO MOLEX SPECIFICATION PS-34646-001, AVAILABLE AT www.molex.com <http://www.molex.com>
 - ASSEMBLY CONFORMS TO SAE/USCAR-2 REV.4 WITH THE FOLLOWING EXCEPTIONS: ENGAGEMENT FORCE TO MOVE CPA FROM PRE-LOCK TO FINAL LOCK POSITION WHEN UNMATED: 40N MIN.
 - DISENGAGEMENT FORCE TO MOVE CPA FROM FINAL LOCK TO PRE-LOCK POSITION: 3N MIN. 40N MAX.
 - TERMINAL INSERTION FORCE FOR WIRE DIAMETER ABOVE 2.5mm NOT EXCEEDING 2.69mm SHALL NOT EXCEED 40 NEWTONS.
 - b. PRODUCT SPECIFICATION SEE: PS-33472-000
 - CONTAINS: PRODUCT INTRODUCTION, PRODUCT SUMMARY, RATINGS (CURRENT, TEMPERATURE, SEALING, AND FLAMMABILITY), AND PRODUCT VALIDATION.
 - c. PACKAGING SPECIFICATION PER MOLEX DRAWING: PK-31300-903
 - d. PARTS MUST BE IN COMPLIANCE TO MOLEX CHEMICAL SUBSTANCES FOR PRODUCTS AND PACKAGING SPECIFICATION: ES-40000-5016
 - e. DATA MUST BE SUBMITTED UNDER THE MOLEX PART NUMBER TO IMDS (COMPANY ID#13255)
 - f. FOR INFORMATION ON 2X6 RECEPTACLE SEALED ASSEMBLY WITHOUT CLIPSLOT SEE SD-33472-121
2. DESIGN - MATERIALS:
 - a. CONNECTOR HOUSING, GROMMET CAP, PLR: SPS/NYLON 20% GLASS FILLED
 - b. MAT SEAL: INTERNALLY LUBRICATED SILICONE
3. DESIGN - GEOMETRY:
 - a. THIS IS A 100% CAD GENERATED PART. THE CAD MATHEMATICAL DATA IS THE MASTER FOR THIS PART. FOR DIMENSIONAL OR ANY INFORMATION NOT SHOWN ON THIS DRAWING, ANALYZE THE CAD MODEL.
 - b. GEOMETRIC DIMENSIONS AND TOLERANCES PER ASME Y14.5M - 1994
 - c. EDGES AND UNDIMENSIONED DETAILS PER ISO1975
 - d. CORNERS SHOWN AS SHARP TO BE R 0.2 MAX.
 - e. LETTERING SHALL BE 0.15 MAX RAISED IN 0.25 MAX RECESS PAD. THIS INCLUDES RECYCLING CODE, CAVITY ID, VENDOR IDENTIFICATION, AND CUSTOMER MATERIAL NUMBER.
 - f. VISUAL DEFECTS SHALL MEET COSMETIC STANDARD PS-45499-002 (Class B)
 - g. LASER MARKING: TBD

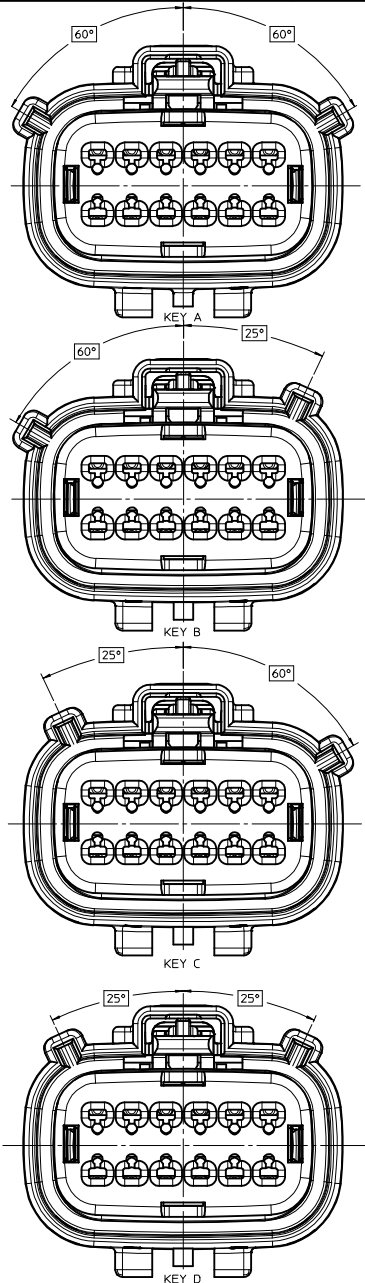
INSPECTION NUMBER LOG
 LAST NUMBER USED:
 ADDED:
 REMOVED:

AA7	ADD NEW P/N 33472-1416
AA6	ADD NEW P/N 33472-1415
AA5	ADD NEW P/N 33472-1407 33472-1408 33472-1409 33472-1410 33472-1411 33472-1412 33472-1413 33472-1414
	UPDATE STATUS 33472-1303 33472-1304 33472-1308 33472-1309 33472-1313 33472-1314 33472-1318 33472-1319
	UPDATED DIMENSIONS TO MATCH MODEL
	ADD NEW P/N 33472-1401 33472-1402 33472-1404 33472-1404 33472-1405 33472-1406
AA4	ADD NEW P/N 33472-1398 33472-1399
AA2	33472-1400
AA1	UPDATED NOTES
AA	ADD NEW P/N 33472-1392 33472-1393 33472-1394 33472-1395 33472-1396 33472-1397
REV	DESCRIPTION

ENTER DESCRIPTION EDC NO: UAU2013-1547 DRAWN BY: 2013/04/02 CHKD: APPR: IKOSHY 2013/04/08 DESCRIPTION:	QUALITY SYMBOLS	GENERAL TOLERANCES (UNLESS SPECIFIED)	DIMENSION STYLE	SCALE	DESIGN UNITS	THIRD ANGLE	TITLE
	▽=0	mm INCH	MM ONLY	3:1	METRIC	☉	MX150 2X6 RECEPTACLE SEALED ASSEMBLY MAT SEAL, CLIPSLOT
	▽=0	4 PLACES ± --- ± --- 3 PLACES ± --- ± --- 2 PLACES ± 0.10 ± --- 1 PLACE ± 0.3 ± --- 0 PLACE ± ±	DRAWN BY DATE D. GRIFFITHS 10-10-03 CHECKED BY DATE D. GRIFFITHS 10-10-03 APPROVED BY DATE D. GRIFFITHS 10-10-03	MATERIAL NO.	DOCUMENT NO.	SHEET NO.	
	▽=0	ANGULAR ± 3 ° DRAFT WHERE APPLICABLE MUST REMAIN WITHIN DIMENSIONS	SIZE D	SEE BOM	SD-33472-131	1 OF 4	THIS DRAWING CONTAINS INFORMATION THAT IS PROPRIETARY TO MOLEX INCORPORATED AND SHOULD NOT BE USED WITHOUT WRITTEN PERMISSION

20 19 18 17 16 15 14 13 12 11 10 9 8 7 6 5 4 3 2 1

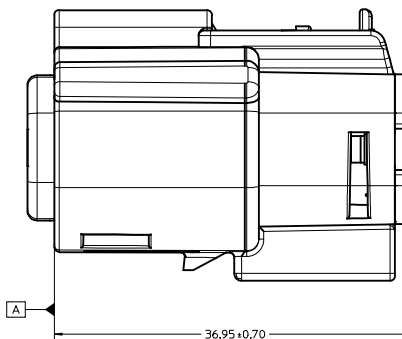
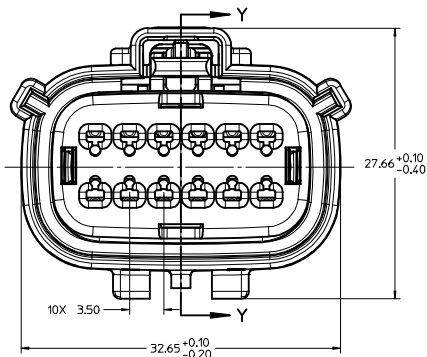
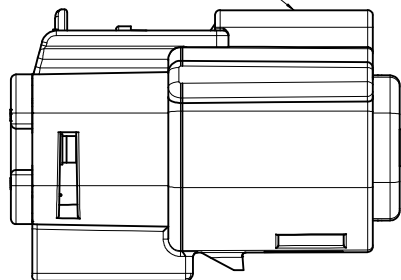
KEY CONFIGURATIONS



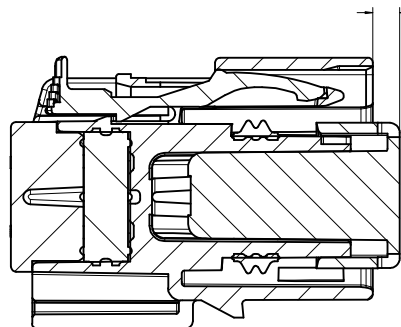
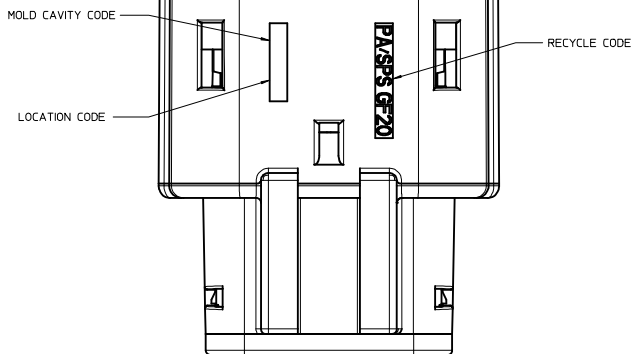
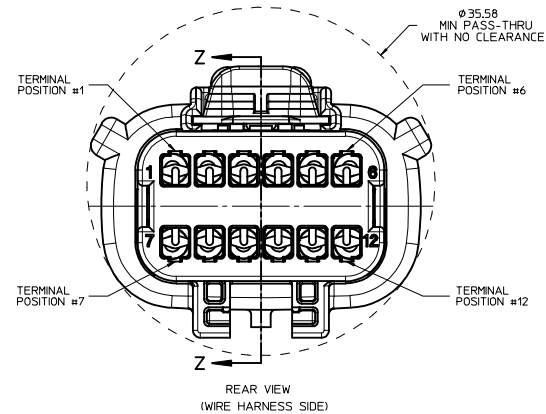
ENTER DESCRIPTION EC NO. UAU2013-1547 DRAWN BY CHYK APPR: WOSHY 2013/04/02 2013/04/08 08	QUALITY SYMBOLS ▽=0 ▽=0 ▽=0	GENERAL TOLERANCES (UNLESS SPECIFIED) <table border="1"> <thead> <tr> <th></th> <th>mm</th> <th>INCH</th> </tr> </thead> <tbody> <tr> <td>4 PLACES</td> <td>± .10</td> <td>± .004</td> </tr> <tr> <td>3 PLACES</td> <td>± .15</td> <td>± .006</td> </tr> <tr> <td>2 PLACES</td> <td>± 0.10</td> <td>± .004</td> </tr> <tr> <td>1 PLACE</td> <td>± 0.3</td> <td>± .012</td> </tr> <tr> <td>0 PLACE</td> <td>±</td> <td>±</td> </tr> </tbody> </table> ANGULAR ± 3 ° DRAFT WHERE APPLICABLE MUST REMAIN WITHIN DIMENSIONS		mm	INCH	4 PLACES	± .10	± .004	3 PLACES	± .15	± .006	2 PLACES	± 0.10	± .004	1 PLACE	± 0.3	± .012	0 PLACE	±	±	DIMENSION STYLE MM ONLY DRAWN BY DATE D. GRIFFITHS 10-10-03 CHECKED BY DATE D. GRIFFITHS 10-10-03 APPROVED BY DATE D. GRIFFITHS 10-10-03	SCALE 4:1 DESIGN UNITS METRIC	THIRD ANGLE PROJECTION TITLE MX150 2X6 RECEPTACLE SEALED ASSEMBLY MAT SEAL, CLIPSLOT molex	MATERIAL NO. SEE BOM DOCUMENT NO. SD-33472-131	SHEET NO. 2 OF 4
		mm	INCH																						
4 PLACES	± .10	± .004																							
3 PLACES	± .15	± .006																							
2 PLACES	± 0.10	± .004																							
1 PLACE	± 0.3	± .012																							
0 PLACE	±	±																							
SIZE D	THIS DRAWING CONTAINS INFORMATION THAT IS PROPRIETARY TO MOLEX INCORPORATED AND SHOULD NOT BE USED WITHOUT WRITTEN PERMISSION																								

19 18 17 16 15 14 13 12 11 10 9 8 7 6 5 4 3 2 1

OPTIONAL LASER MARKING ON THIS SURFACE SEE NOTE 3g.

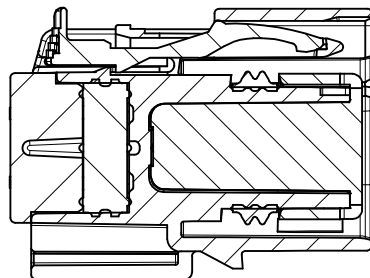


RECEPTACLE SEALED ASSEMBLY



PRIMARY LOCK REINFORCEMENT (PLR) SHOWN IN PRE-STAGED POSITION

SECTION Z-Z

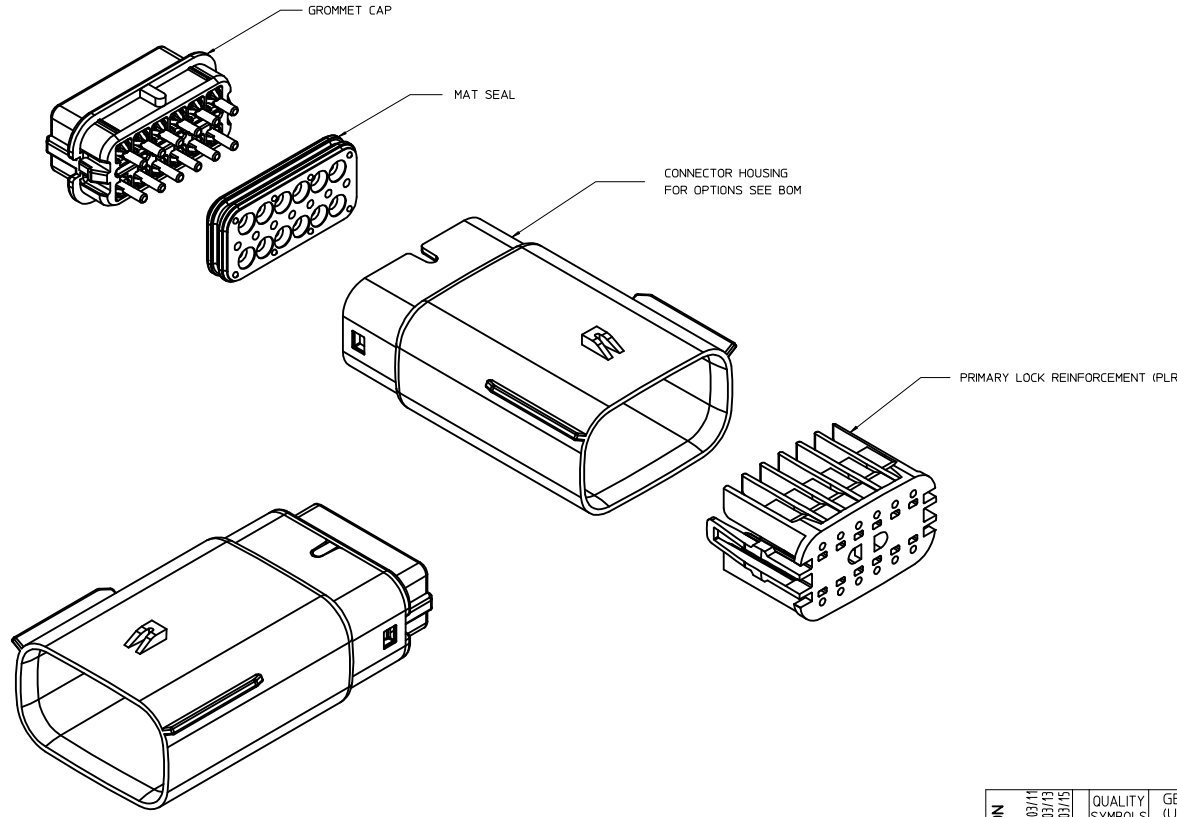


PRIMARY LOCK REINFORCEMENT (PLR) SHOWN IN FINAL-LOCK POSITION

SECTION Y-Y

ENTER DESCRIPTION ELEC NO. UAU2013-1547 DRAWN BY CHYK APPR: WOSHY 2013/04/02 2013/04/08 2013/04/08 AA7	QUALITY SYMBOLS ∇=0 ∇=0 ∇=0		GENERAL TOLERANCES (UNLESS SPECIFIED) mm INCH 4 PLACES ± --- ± --- 3 PLACES ± 0.10 ± --- 2 PLACES ± 0.3 ± --- 1 PLACE ± ± --- 0 PLACE ± ±		DIMENSION STYLE MM ONLY		SCALE 4:1 DESIGN UNITS METRIC THIRD ANGLE PROJECTION		TITLE MX150 2X6 RECEPTACLE SEALED ASSEMBLY MAT SEAL, CLIPSLOT molex		MATERIAL NO. SEE BOM DOCUMENT NO. SD-33472-131		SHEET NO. 3 OF 4	
	ANGULAR ± 3 °		DRAFT WHERE APPLICABLE MUST REMAIN WITHIN DIMENSIONS		DATE D. GRIFFITHS 10-10-03 DATE D. GRIFFITHS 10-10-03 DATE D. GRIFFITHS 10-10-03		DATE D. GRIFFITHS 10-10-03		DATE D. GRIFFITHS 10-10-03		DATE D. GRIFFITHS 10-10-03		DATE D. GRIFFITHS 10-10-03	
	DRAFT WHERE APPLICABLE MUST REMAIN WITHIN DIMENSIONS		DRAFT WHERE APPLICABLE MUST REMAIN WITHIN DIMENSIONS		DRAFT WHERE APPLICABLE MUST REMAIN WITHIN DIMENSIONS		DRAFT WHERE APPLICABLE MUST REMAIN WITHIN DIMENSIONS		DRAFT WHERE APPLICABLE MUST REMAIN WITHIN DIMENSIONS		DRAFT WHERE APPLICABLE MUST REMAIN WITHIN DIMENSIONS		DRAFT WHERE APPLICABLE MUST REMAIN WITHIN DIMENSIONS	
	DRAFT WHERE APPLICABLE MUST REMAIN WITHIN DIMENSIONS		DRAFT WHERE APPLICABLE MUST REMAIN WITHIN DIMENSIONS		DRAFT WHERE APPLICABLE MUST REMAIN WITHIN DIMENSIONS		DRAFT WHERE APPLICABLE MUST REMAIN WITHIN DIMENSIONS		DRAFT WHERE APPLICABLE MUST REMAIN WITHIN DIMENSIONS		DRAFT WHERE APPLICABLE MUST REMAIN WITHIN DIMENSIONS		DRAFT WHERE APPLICABLE MUST REMAIN WITHIN DIMENSIONS	

TABLE OF CONTENTS	
SHEET NO.	SHEET DESCRIPTION
1	NOTES
2	KEY CONFIGURATIONS
3	BLADE SEALED ASSEMBLY
4	SYSTEM PACKAGING
5	BACKSHELL NOTES
6	BACKSHELL
7	BACKSHELL CONFIGURATIONS
8-10	BOM



NOTES: VALID UNLESS OTHERWISE SPECIFIED

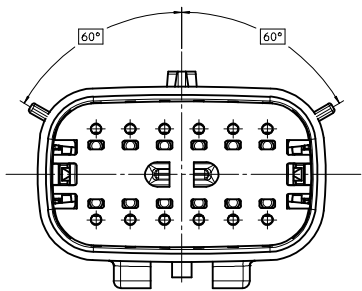
1. GENERAL:
 - a. APPLICATION SPECIFICATION SEE: AS-33472-100
 CONTAINS: PRODUCT INTRODUCTION, PRODUCT SUMMARY, CONNECTOR ASSEMBLY, PACKAGING INFORMATION, CONNECTOR MATING, SERVICE INSTRUCTIONS, ELECTRICAL CONTINUITY CHECKING, CRIMPING, AND TROUBLESHOOTING.
 -DESIGNED TO MATE WITH RECEPTACLE HOUSING ASSEMBLY SPECIFIED IN MOLEX CHARTED DRAWING SD-33472-121 AND SD-33472-131 FOR 1.5mm BLADE TERMINALS TO BE USED WITH THIS ASSEMBLY. SEE MOLEX DRAWING SD-33000-001
 - SYSTEM TO BE USED WITH WIRE WITH DIAMETER RANGE OF 1.2mm TO 2.69mm.
 -ASSEMBLY SHIPPED WITH PLR IN PRE-LOCK POSITION
 -IN THE EVENT THAT THE PLR IS FOUND IN THE SEATED (FINAL LOCK) POSITION, REFER TO MOLEX SPECIFICATION PS-34646-001, AVAILABLE AT www.molex.com <<http://www.molex.com>>
 -ASSEMBLY CONFORMS TO SAE/JUSCAR-2 REV.4 WITH THE FOLLOWING EXCEPTIONS:
 TERMINAL INSERTION FORCE FOR WIRE DIAMETER ABOVE 2.5mm NOT EXCEEDING 2.69mm SHALL NOT EXCEED 45 NEWTONS.
 - b. PRODUCT SPECIFICATION SEE: PS-33472-000
 CONTAINS: PRODUCT INTRODUCTION, PRODUCT SUMMARY, RATINGS (CURRENT, TEMPERATURE, SEALING, AND FLAMMABILITY), AND PRODUCT VALIDATION.
 - c. PACKAGING SPECIFICATION PER MOLEX DRAWING: PK-31300-635
 - d. PARTS MUST BE IN COMPLIANCE TO MOLEX CHEMICAL SUBSTANCES FOR PRODUCTS AND PACKAGING SPECIFICATION: ES-40000-5016
 - e. DATA MUST BE SUBMITTED UNDER THE MOLEX PART NUMBER TO IMDS (COMPANY ID#13255)
2. DESIGN - MATERIALS:
 - a. SEE BOM TABLE
3. DESIGN - GEOMETRY:
 - a. THIS IS A 100% CAD GENERATED PART. THE CAD MATHEMATICAL DATA IS THE MASTER FOR THIS PART. FOR DIMENSIONAL OR ANY INFORMATION NOT SHOWN ON THIS DRAWING, ANALYZE THE CAD MODEL.
 - b. GEOMETRIC DIMENSIONS AND TOLERANCES PER ASME Y14.5M - 1994
 - c. EDGES AND UNDIMENSIONED DETAILS PER ISO13715
 - d. CORNERS SHOWN AS SHARP TO BE R 0.2 MAX.
 - e. LETTERING SHALL BE 0.15 MAX RAISED IN 0.25 MAX RECESS PAD. THIS INCLUDES RECYCLING CODE, CAVITY ID, VENDOR IDENTIFICATION, AND CUSTOMER MATERIAL NUMBER.
 - f. VISUAL DEFECTS SHALL MEET COSMETIC STANDARD PS-45499-002 (Class B) CAD MODEL.
 - g. LASER MARKING: TBD

INSPECTION LOG
 LAST NUMBER USED:
 ADDED:
 REMOVED:

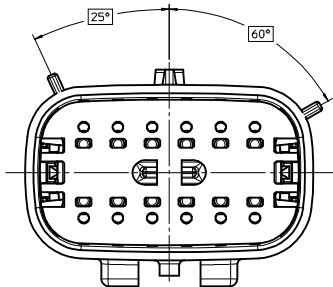
REV	DESCRIPTION
Z	UPDATED GROMMET CAP
Y11	RENAMED BACKSHELLS
Y10	ADD NEW P/N 33482-1311
Y9	ADD NEW P/N 33482-1309 33482-1310
Y8	ADD NEW P/N 33482-1308
Y7	ADD NEW P/N 33482-1307
Y6	ADD NEW P/N 33482-1305 33482-1306
Y5	CORRECTED TOLERANCE SHEET 3
Y4	ADDED BACKSHELL
Y3	ADD NEW P/N 33482-1303 33482-1304
Y2	ADD NEW P/N 33482-1302
Y1	ADD NEW P/N 33482-1301
Y	ADD NEW P/N 33482-1299 33482-1300
X	REDRAWN

ENTER DESCRIPTION EC NO: UAU2013-1432 DRAWN BY: CHYKHOVICK CHECKED BY: APPR: IKOSHY DATE: 2013/03/11 2013/03/13 2013/03/15	QUALITY SYMBOLS	GENERAL TOLERANCES (UNLESS SPECIFIED)	DIMENSION STYLE	SCALE	DESIGN UNITS	THIRD ANGLE PROJECTION
	∇=0 ∇=0 ∇=0	4 PLACES ± --- ± --- 3 PLACES ± --- ± --- 2 PLACES ± 0.10 ± --- 1 PLACE ± 0.3 ± --- 0 PLACE ± ± ---	MM ONLY DRAWN BY: DATE CHECKED BY: DATE DGR1FF1THS 05-16-03 DGR1FF1THS 05-16-03 APPROVED BY: DATE DGR1FF1THS 05-16-03	MM ONLY 3:1	METRIC	THIRD ANGLE PROJECTION MX150 2X6 BLADE SEALED ASSEMBLY MAT SEAL molex
	ANGULAR ± 3 ° DRAFT WHERE APPLICABLE MUST REMAIN WITHIN DIMENSIONS	MATERIAL NO. SEE BOM	DOCUMENT NO. SD-33482-121	SHEET NO. 1 OF 10		
	THIS DRAWING CONTAINS INFORMATION THAT IS PROPRIETARY TO MOLEX INCORPORATED AND SHOULD NOT BE USED WITHOUT WRITTEN PERMISSION					

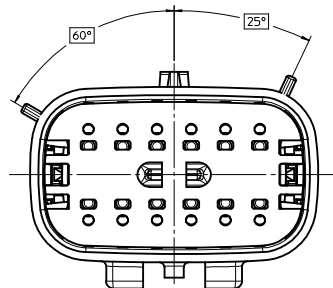
KEY CONFIGURATIONS



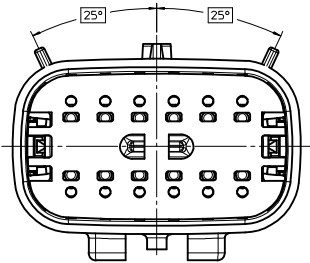
KEY A



KEY B



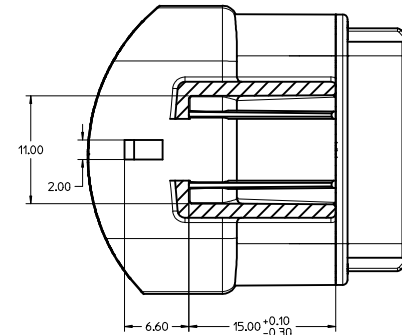
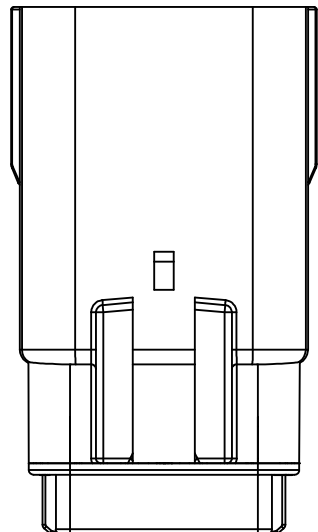
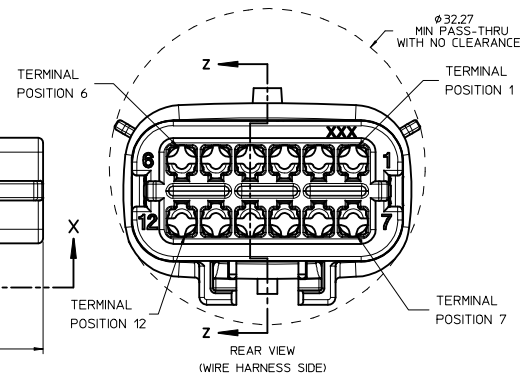
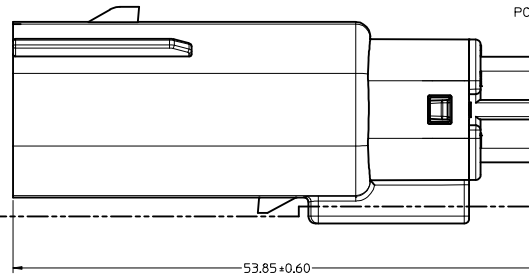
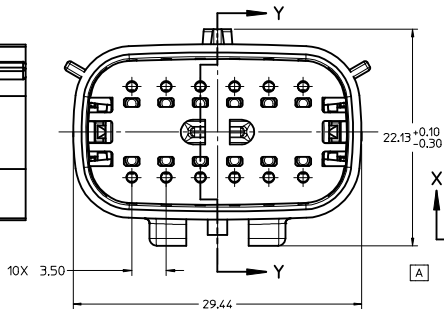
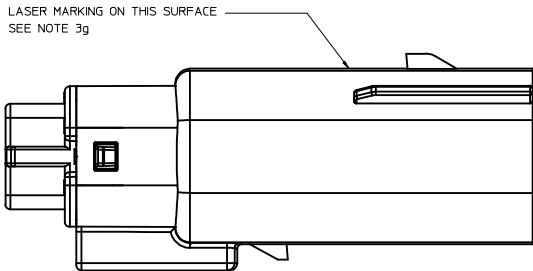
KEY C



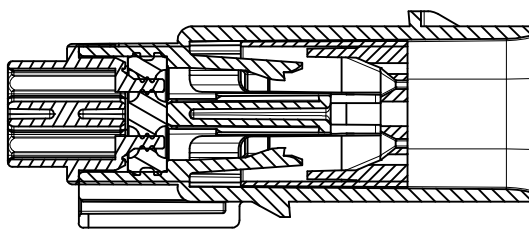
KEY D

ENTER DESCRIPTION IEC NO: UAU2013-1432 DRAWN: APPROFIT 2013/03/11 CHECKED: MOICK 2013/03/13 APPROVED: KOSHY 2013/03/15 REVISIONS:	QUALITY SYMBOLS	GENERAL TOLERANCES (UNLESS SPECIFIED)	DIMENSION STYLE	SCALE	DESIGN UNITS	THIRD ANGLE PROJECTION	
	▽=0	4 PLACES ± mm ± INCH	MM ONLY	4:1	METRIC		
	▽=0	3 PLACES ± 0.10					
	▽=0	2 PLACES ± 0.3					
		ANGULAR ± 3°					
		DRAFT WHERE APPLICABLE MUST REMAIN WITHIN DIMENSIONS					
			DRAWN BY	DATE	TITLE		
			DGRIFITHS	05-16-03	MX150 2X6 BLADE SEALED ASSEMBLY MAT SEAL		
			CHECKED BY	DATE			
			DGRIFITHS	05-16-03			
			APPROVED BY	DATE			
			DGRIFITHS	05-16-03			
			MATERIAL NO.	DOCUMENT NO.		SHEET NO.	
			SEE BOM	SD-33482-121		2 OF 10	
			THIS DRAWING CONTAINS INFORMATION THAT IS PROPRIETARY TO MOLEX INCORPORATED AND SHOULD NOT BE USED WITHOUT WRITTEN PERMISSION				

BLADE SEALED ASSEMBLY

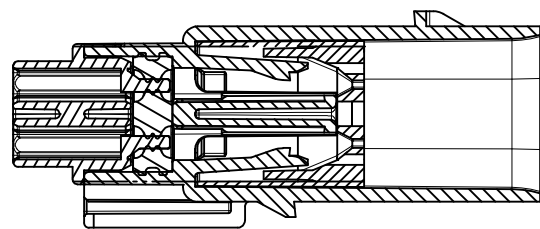


Partial X-X
SCALE 4:1



PRIMARY LOCK REINFORCER (PLR) SHOWN
IN PRE-STAGED POSITION

SECTION Z-Z



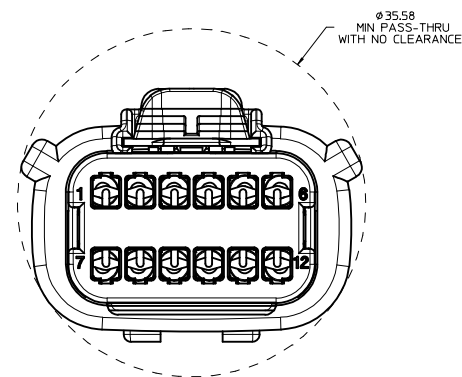
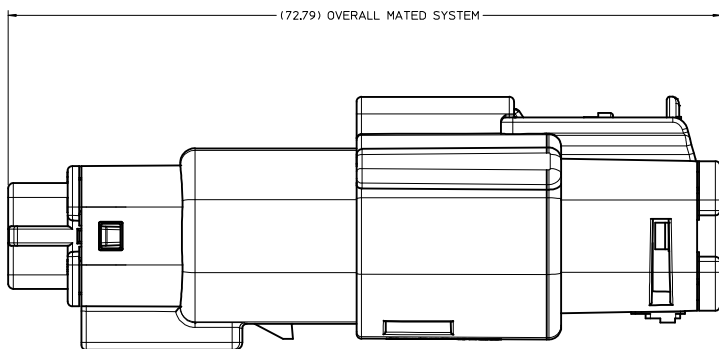
PRIMARY LOCK REINFORCER (PLR) SHOWN
IN FINAL-LOCK POSITION

SECTION Y-Y

ENTER DESCRIPTION IEC NO. UAU2013-1432 DRAWN/PROFIT 2013/03/11 CHKD/MDLCK 2013/03/13 APPR./KOSHY 2013/03/15 REV DESCRIPTION	QUALITY SYMBOLS	GENERAL TOLERANCES (UNLESS SPECIFIED)	DIMENSION STYLE	SCALE	DESIGN UNITS	THIRD ANGLE PROJECTION	
	∇=0 ∇=0 ∇=0	mm INCH 4 PLACES ± --- ± --- 3 PLACES ± --- ± --- 2 PLACES ± 0.10 ± --- 1 PLACE ± 0.3 ± --- 0 PLACE ± ±	MM ONLY	4:1	METRIC	DRAWN BY DATE DGRIF/I THS 05-16-03 CHECKED BY DATE DGRIF/I THS 05-16-03 APPROVED BY DATE DGRIF/I THS 05-16-03	MX150 2X6 BLADE SEALED ASSEMBLY MAT SEAL molex DOCUMENT NO. SD-33482-121
	ANGULAR ± 3 ° DRAFT WHERE APPLICABLE MUST REMAIN WITHIN DIMENSIONS	MATERIAL NO.	SIZE	SEE BOM		SHEET NO.	3 OF 10
	THIS DRAWING CONTAINS INFORMATION THAT IS PROPRIETARY TO MOLEX INCORPORATED AND SHOULD NOT BE USED WITHOUT WRITTEN PERMISSION						

20 19 18 17 16 15 14 13 12 11 10 9 8 7 6 5 4 3 2 1

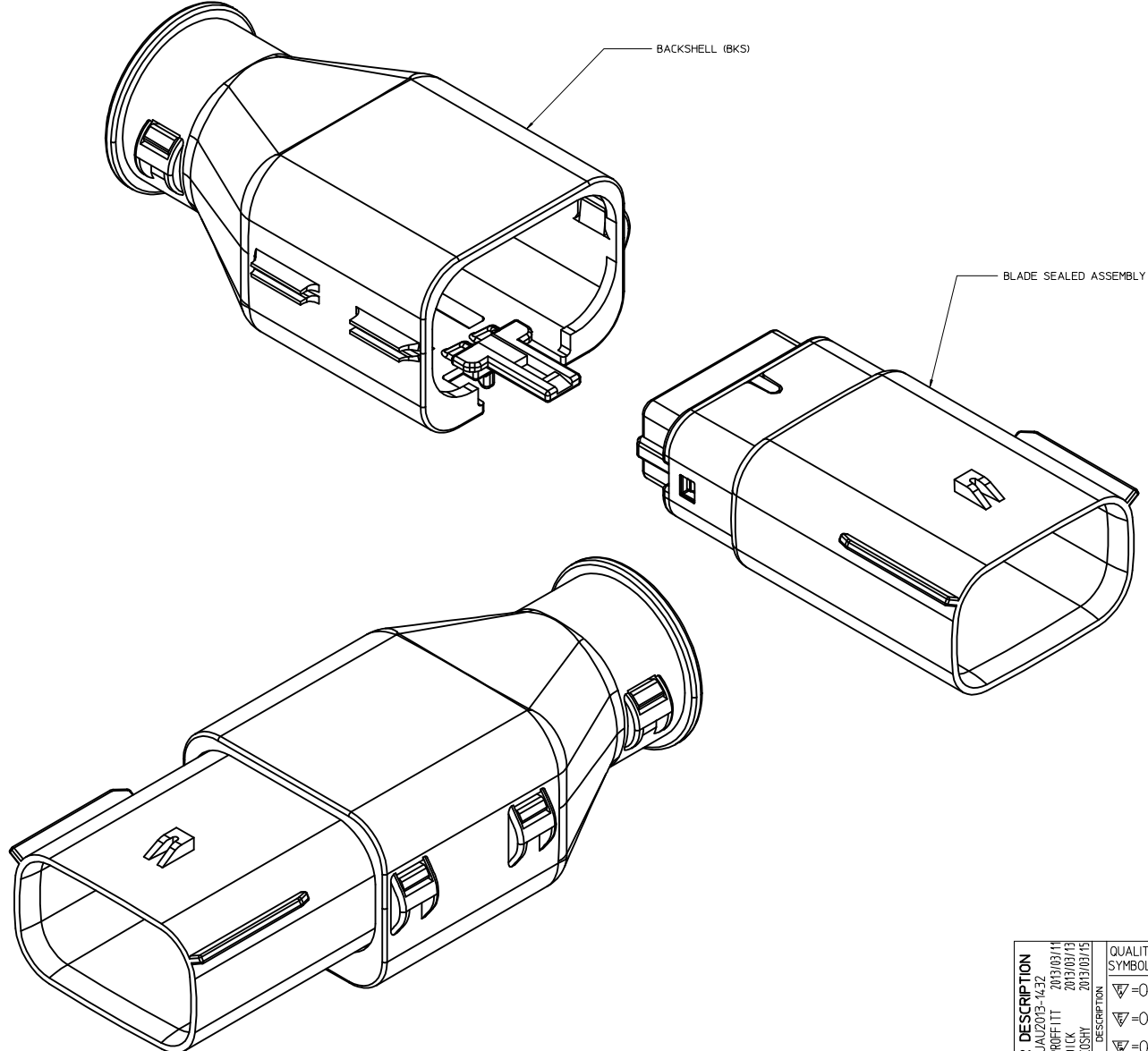
SYSTEM PACKAGING



ENTER DESCRIPTION IEC NO. UAU2013-1432 DRAWN BY: CHYKHOLOK CHECKED BY: APPR:VKOSHY 2013/03/11 2013/03/13 2013/03/15	QUALITY SYMBOLS	GENERAL TOLERANCES (UNLESS SPECIFIED)	DIMENSION STYLE	SCALE	DESIGN UNITS	THIRD ANGLE PROJECTION
	∇=0 ∇=0 ∇=0	mm INCH 4 PLACES ± --- ± --- 3 PLACES ± --- ± --- 2 PLACES ± 0.10 ± --- 1 PLACE ± 0.3 ± --- 0 PLACE ± ±	MM ONLY DRAWN BY: DGRIFFI THS DATE: 05-16-03 CHECKED BY: DATE: APPROVED BY: DATE: DGRIFFI THS 05-16-03	4:1	METRIC	MX150 2X6 BLADE SEALED ASSEMBLY MAT SEAL molex
	ANGULAR ± 3 ° DRAFT WHERE APPLICABLE MUST REMAIN WITHIN DIMENSIONS	MATERIAL NO: SEE BOM	DOCUMENT NO. SD-33482-121	SHEET NO. 4 OF 10		
	SIZE D	THIS DRAWING CONTAINS INFORMATION THAT IS PROPRIETARY TO MOLEX INCORPORATED AND SHOULD NOT BE USED WITHOUT WRITTEN PERMISSION				

19 18 17 16 15 14 13 12 11 10 9 8 7 6 5 4 3 2 1

BACKSHELL NOTES



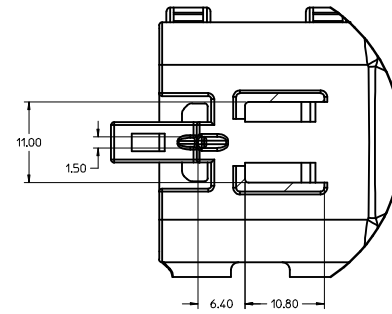
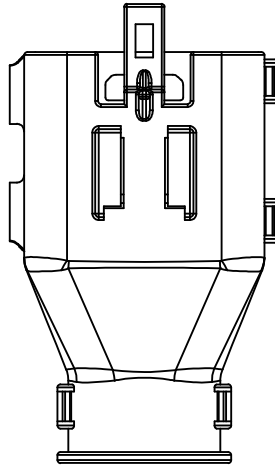
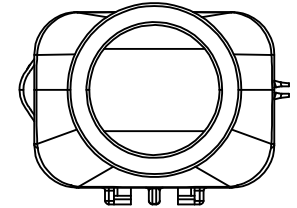
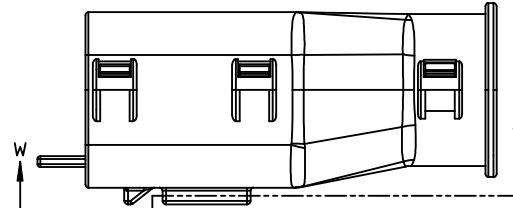
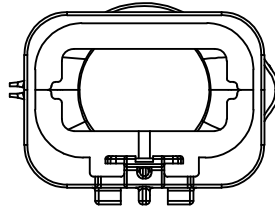
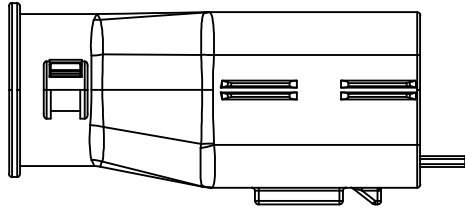
BACKSHELL NOTES: VALID UNLESS OTHERWISE SPECIFIED

- 1. GENERAL:
 - a. APPLICATION SPECIFICATION SEE: AS-*****TBD*****
 - DESIGNED TO MATE WITH BLADE SEALED ASSEMBLY SPECIFIED IN MOLEX DRAWING SD-33482-121.
 - SYSTEM TO BE USED WITH WIRE WITHIN DIAMETER RANGE OF TBDmm TO TBDmm.
 - COMPONENTS ARE OPTIONAL AND MUST BE PURCHASED SEPARATELY
 - BACKSHELL DESIGN IS OWNED BY SCHLEMMER
 - b. PRODUCT SPECIFICATION SEE: PS-*****TBD*****
 - c. PACKAGING SPECIFICATION PER MOLEX DRAWING: PK-*****TBD*****
 - d. PARTS MUST BE IN COMPLIANCE TO MOLEX CHEMICAL SUBSTANCES FOR PRODUCTS AND PACKAGING SPECIFICATION: ES-40000-5016
 - e. DATA MUST BE SUBMITTED UNDER THE MOLEX PART NUMBER TO IMDS (COMPANY ID=13255)
- 2. DESIGN - MATERIALS:
 - a. PA66 0% GLASS FILLED
 - b. BLACK
- 3. DESIGN - GEOMETRY:
 - a. THIS IS A 100% CAD GENERATED PART. THE CAD MATHEMATICAL DATA IS THE MASTER FOR THIS PART. FOR DIMENSIONAL OR ANY INFORMATION NOT SHOWN ON THIS DRAWING, ANALYZE THE CAD MODEL.
 - b. GEOMETRIC DIMENSIONS AND TOLERANCES PER ASME Y14.5M - 2009
 - c. EDGES AND UNDIMENSIONED DETAILS PER ISO13715
 - d. CORNERS SHOWN AS SHARP TO BE R 0.2 MAX.
 - e. VISUAL DEFECTS SHALL MEET COSMETIC STANDARD PS-45499-002 (Class B).

ENTER DESCRIPTION IEC NO: JAU2013-1432 DRAWN BY: CHYKHOLOK CHECKED BY: APPR:VKOSHY DATE: 2013/03/13 DATE: 2013/03/15	QUALITY SYMBOLS	GENERAL TOLERANCES (UNLESS SPECIFIED)	DIMENSION STYLE	SCALE	DESIGN UNITS	THIRD ANGLE PROJECTION	
	∇=0 ∇=0 ∇=0	mm INCH 4 PLACES ± --- ± --- 3 PLACES ± 0.10 ± --- 2 PLACES ± 0.3 ± --- 0 PLACE ± ±	MM ONLY	2:1	METRIC	DRAWN BY: DGRIFITHS CHECKED BY: DGRIFITHS APPROVED BY: DGRIFITHS DATE: 05-16-03 DATE: 05-16-03 DATE: 05-16-03	MX150 2X6 BLADE SEALED ASSEMBLY MAT SEAL molex
	ANGULAR ± 3 ° DRAFT WHERE APPLICABLE MUST REMAIN WITHIN DIMENSIONS	MATERIAL NO: SEE BOM SIZE: D	DOCUMENT NO: SD-33482-121	SHEET NO: 5 OF 10			
	THIS DRAWING CONTAINS INFORMATION THAT IS PROPRIETARY TO MOLEX INCORPORATED AND SHOULD NOT BE USED WITHOUT WRITTEN PERMISSION						

20 19 18 17 16 15 14 13 12 11 10 9 8 7 6 5 4 3 2 1

BACKSHELL



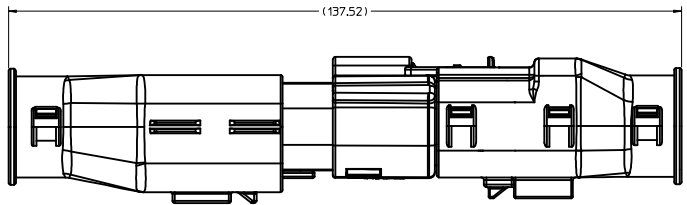
Partial W-W
SCALE 3:1

ENTER DESCRIPTION IEC NO. UAU2013-1432 DRAWN/PROFIT 2013/03/11 CHECK/DOCK 2013/03/13 APPR:VKOSHY 2013/03/15	QUALITY SYMBOLS ∇=0 ∇=0 ∇=0	GENERAL TOLERANCES (UNLESS SPECIFIED)		DIMENSION STYLE MM ONLY	SCALE 3:1	DESIGN UNITS METRIC	THIRD ANGLE PROJECTION		
		4 PLACES ± --- ± --- 3 PLACES ± --- ± --- 2 PLACES ± 0.10 ± --- 1 PLACE ± 0.3 ± --- 0 PLACE ± ±	mm INCH	DRAWN BY DGRIFITHS	DATE 05-16-03	TITLE MX150 2X6 BLADE SEALED ASSEMBLY MAT SEAL			
		ANGULAR ± 3 ° DRAFT WHERE APPLICABLE MUST REMAIN WITHIN DIMENSIONS		MATERIAL NO. SEE BOM	APPROVED BY DGRIFITHS	DATE 05-16-03	DOCUMENT NO. SD-33482-121		
				SIZE D	THIS DRAWING CONTAINS INFORMATION THAT IS PROPRIETARY TO MOLEX INCORPORATED AND SHOULD NOT BE USED WITHOUT WRITTEN PERMISSION				

SHEET NO.
6 OF 10

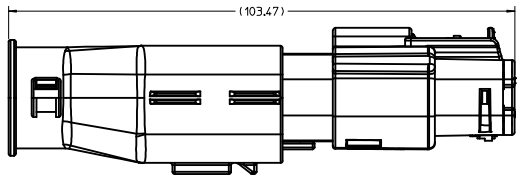
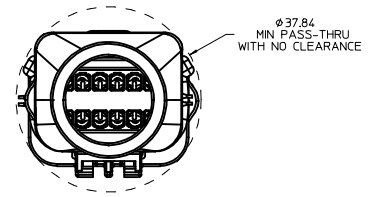
19 18 17 16 15 14 13 12 11 10 9 8 7 6 5 4 3 2 1

20 19 18 17 16 15 14 13 12 11 10 9 8 7 6 5 4 3 2 1

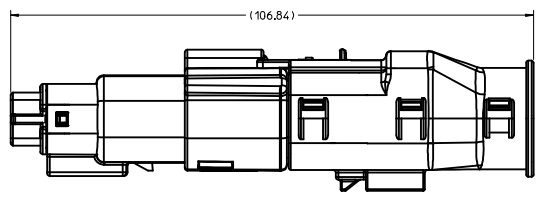
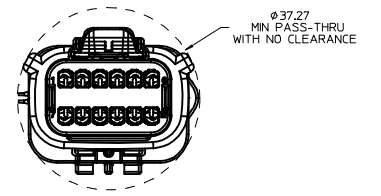


OVERALL MATED SYSTEM WITH BLADE AND RECEPTACLE BACKSHELL

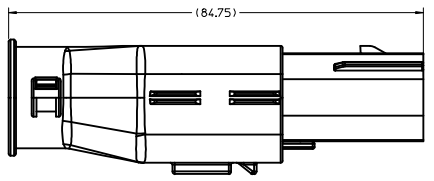
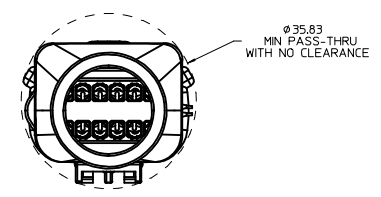
BACKSHELL CONFIGURATIONS



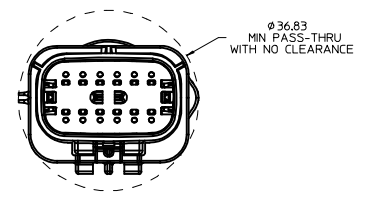
OVERALL MATED SYSTEM WITH BLADE BACKSHELL



OVERALL MATED SYSTEM WITH RECEPTACLE BACKSHELL



BLADE SEALED ASSEMBLY WITH BLADE BACKSHELL



ENTER DESCRIPTION IEC NO. UAU2013-1432 DRAWN BY CHYKHOLOK 2013/03/13 APPR: WOSHY 2013/03/15 REV DESCRIPTION	QUALITY SYMBOLS	GENERAL TOLERANCES (UNLESS SPECIFIED)	DIMENSION STYLE	SCALE	DESIGN UNITS	THIRD ANGLE PROJECTION
	∇=0 ∇=0 ∇=0	mm INCH 4 PLACES ± --- ± --- 3 PLACES ± 0.10 ± --- 2 PLACES ± 0.3 ± --- 1 PLACE ± ± --- 0 PLACE ± ±	MM ONLY	1:1	METRIC	THIRD ANGLE PROJECTION MX150 2X6 BLADE SEALED ASSEMBLY MAT SEAL molex
	ANGULAR ± 3 ° DRAFT WHERE APPLICABLE MUST REMAIN WITHIN DIMENSIONS	DRAWN BY DATE DGRIFITHS 05-16-03 CHECKED BY DATE DGRIFITHS 05-16-03 APPROVED BY DATE DGRIFITHS 05-16-03	SEE BOM	DOCUMENT NO.	SHEET NO.	
				SD-33482-121	7 OF 10	

19 18 17 16 15 14 13 12 11 10 9 8 7 6 5 4 3 2 1

ASSEMBLY DESCRIPTION	ASSEMBLY PART NUMBER	A	B	C	D	1	2	3	4	5	6	7	8	9	10	11	12	STATUS	COMMENTS	34950-1210 BKS WITH RIBS	34950-1220 BKS WITHOUT RIBS
KEY A, BLACK	33482-1240	A					2	3					8	9	10	11			OK TO TOOL	OK TO TOOL	
KEY A, BLACK	33482-1239	A				1				5	6	7	8						OK TO TOOL	OK TO TOOL	
KEY B, LIGHT GRAY	33482-1238	B					2							9	10				OK TO TOOL	OK TO TOOL	
KEY A, BLACK	33482-1237	A					2												OK TO TOOL	OK TO TOOL	
KEY B, LIGHT GRAY	33482-1236	B				1				5	6	7	8	9	10				OK TO TOOL	OK TO TOOL	
KEY A, BLACK	33482-1235	A					2	3			6	7	8		10	11			OK TO TOOL	OK TO TOOL	
KEY A, BLACK	33482-1234	A									6	7							OK TO TOOL	OK TO TOOL	
KEY A, BLACK	33482-1233	A					2	3		5	6	7	8			11			OK TO TOOL	OK TO TOOL	
KEY A, BLACK	33482-1232	A					2	3					8			11			OK TO TOOL	OK TO TOOL	
VOID KEY	33482-1231																				
KEY D, GREEN	33482-1230			D		1	2	3	4	5	6	7	8	9	10	11	12	NOT RECOMMENDED	SEE P/N 33482-1264	OK TO TOOL	OK TO TOOL
KEY C, BROWN	33482-1229			C		1	2	3	4	5	6	7	8	9	10	11	12	NOT RECOMMENDED	SEE P/N 33482-1263	OK TO TOOL	OK TO TOOL
KEY B, LIGHT GRAY	33482-1228	B				1	2	3	4	5	6	7	8	9	10	11	12			OK TO TOOL	OK TO TOOL
KEY A, BLACK	33482-1227	A				1	2	3	4	5	6	7	8	9	10	11	12			OK TO TOOL	OK TO TOOL
KEY A, BLACK	33482-1226	A									6						12			OK TO TOOL	OK TO TOOL
VOID KEY	33482-1225																				
KEY D, GREEN	33482-1224			D		1					6	7				12		NOT RECOMMENDED		OK TO TOOL	OK TO TOOL
KEY C, BROWN	33482-1223			C		1					6	7				12		NOT RECOMMENDED		OK TO TOOL	OK TO TOOL
KEY B, LIGHT GRAY	33482-1222	B				1					6	7				12				OK TO TOOL	OK TO TOOL
KEY A, BLACK	33482-1221	A				1					6	7				12				OK TO TOOL	OK TO TOOL
VOID KEY	33482-1220																				
KEY D, GREEN	33482-1219			D		1					6	7						NOT RECOMMENDED		OK TO TOOL	OK TO TOOL
KEY C, BROWN	33482-1218			C		1					6	7						NOT RECOMMENDED		OK TO TOOL	OK TO TOOL
KEY B, LIGHT GRAY	33482-1217	B				1					6	7								OK TO TOOL	OK TO TOOL
KEY A, BLACK	33482-1216	A				1					6	7								OK TO TOOL	OK TO TOOL
VOID KEY	33482-1215																				
KEY D, GREEN	33482-1214			D							6	7						NOT RECOMMENDED		OK TO TOOL	OK TO TOOL
KEY C, BROWN	33482-1213			C							6	7						NOT RECOMMENDED		OK TO TOOL	OK TO TOOL
KEY B, LIGHT GRAY	33482-1212	B									6	7								OK TO TOOL	OK TO TOOL
KEY A, BLACK	33482-1211	A									6	7								OK TO TOOL	OK TO TOOL
VOID KEY	33482-1210																				
KEY D, GREEN	33482-1209			D							6							NOT RECOMMENDED		OK TO TOOL	OK TO TOOL
KEY C, BROWN	33482-1208			C							6							NOT RECOMMENDED		OK TO TOOL	OK TO TOOL
KEY B, LIGHT GRAY	33482-1207	B									6									OK TO TOOL	OK TO TOOL
KEY A, BLACK	33482-1206	A									6									OK TO TOOL	OK TO TOOL
VOID KEY	33482-1205																				
KEY D, GREEN	33482-1204			D														NOT RECOMMENDED	SEE P/N 33482-1262	OK TO TOOL	OK TO TOOL
KEY C, BROWN	33482-1203			C														NOT RECOMMENDED	SEE P/N 33482-1261	OK TO TOOL	OK TO TOOL
KEY B, LIGHT GRAY	33482-1202	B																		OK TO TOOL	OK TO TOOL
KEY A, BLACK	33482-1201	A																		OK TO TOOL	OK TO TOOL

1 2 3 4 5 6 7 8 9 10 11 12
 BLOCKED TERMINAL
 CAVITY WITH A NUMBER INDICATES BLOCKED TERMINAL POSITION
 CAVITY WITHOUT A NUMBER INDICATES OPEN TERMINAL POSITION
 STATUS COMMENTS 34950-1210 BKS WITH RIBS 34950-1220 BKS WITHOUT RIBS
 OPTIONAL ATTACHMENTS SOLD SEPARATELY

STANDARD PLR	NATURAL	SPS/NYLON GF20
MAT SEAL	BURNT ORANGE	INHERENTLY LUBRICATED SILICONE
GROMMET CAP	BLACK	SPS/NYLON GF20
HOUSING KEYING OPTION D	STONE GRAY	SPS/NYLON GF20
HOUSING KEYING OPTION C	DARK GRAY	SPS/NYLON GF20
HOUSING KEYING OPTION D	GREEN	SPS/NYLON GF20
HOUSING KEYING OPTION C	BROWN	SPS/NYLON GF20
HOUSING KEYING OPTION B	LIGHT GRAY	SPS/NYLON GF20
HOUSING KEYING OPTION A	BLACK	SPS/NYLON GF20
DESCRIPTION	COLOR	MATERIAL

BOM/APPLICABLE COMPONENTS TABLE

ABREVIATION	COMPONENT
A	HOUSING KEY A
B	HOUSING KEY B
C	HOUSING KEY C
D	HOUSING KEY D
GC	GROMMET CAP
M	MAT SEAL
P	PLR, STANDARD
BKS	BACKSHELL

ENTER DESCRIPTION IEC NO. UAU2013-1432 DRAWN BY APPROFIT 2013/03/11 CHECKED BY CHYKHOLOK 2013/03/13 APPR. VIOSHY 2013/03/15 REV DESCRIPTION	QUALITY SYMBOLS	GENERAL TOLERANCES (UNLESS SPECIFIED)	DIMENSION STYLE	SCALE	DESIGN UNITS	THIRD ANGLE PROJECTION
	▽=0	4 PLACES ± mm ± INCH	MM ONLY	DRAWN BY DATE	METRIC	☉
	▽=0	3 PLACES ± 0.10 ± 0.004		DGRIF ITHS 05-16-03		
	▽=0	1 PLACE ± 0.3 ± 0.012		CHECKED BY DATE		
		ANGULAR ± 3 °		APPROVED BY DATE		
		DRAFT WHERE APPLICABLE MUST REMAIN WITHIN DIMENSIONS		DGRIF ITHS 05-16-03		
			MATERIAL NO.	SEE BOM	DOCUMENT NO.	
					SD-33482-121	
						SHEET NO. 8 OF 10

MX150 2X6 BLADE SEALED ASSEMBLY MAT SEAL
molex

ASSEMBLY DESCRIPTION	ASSEMBLY PART NUMBER	A	B	C	D	1	2	3	4	5	6	7	8	9	10	11	12	STATUS	COMMENTS	34950-1210 BKS WITH RIBS	34950-1220 BKS WITHOUT RIBS		
KEY A, BLACK	33482-1280	A				1	2	3	4	5	6			9					OK TO TOOL	OK TO TOOL			
KEY A, BLACK	33482-1279	A				1	2	3	4	5	6	7	8	9	10	11			OK TO TOOL	OK TO TOOL			
KEY A, BLACK	33482-1278	A									6						12		OK TO TOOL	OK TO TOOL			
KEY A, BLACK	33482-1277	A				1	2	3								11	12		OK TO TOOL	OK TO TOOL			
KEY A, BLACK	33482-1276	A				1	2	3	4		6		8		10	11	12		OK TO TOOL	OK TO TOOL			
KEY A, BLACK	33482-1275	A							4					8		10			OK TO TOOL	OK TO TOOL			
KEY A, BLACK	33482-1274	A				1			3	4	5	6		8		10	11	12	OK TO TOOL	OK TO TOOL			
KEY A, BLACK	33482-1273	A												8					OK TO TOOL	OK TO TOOL			
KEY A, BLACK	33482-1272	A					2					7	8	9	10				OK TO TOOL	OK TO TOOL			
KEY A, BLACK	33482-1271	A					2					7	8	9					OK TO TOOL	OK TO TOOL			
KEY A, BLACK	33482-1270	A					2		4			7	8	9	10				OK TO TOOL	OK TO TOOL			
KEY A, BLACK	33482-1269	A				1	2	3	4	5				8	9	10	11	12	OK TO TOOL	OK TO TOOL			
KEY A, BLACK	33482-1268	A						3	4	5	6	7	8	9	10	11			OK TO TOOL	OK TO TOOL			
KEY A, BLACK	33482-1267	A						3	4	5	6	7							OK TO TOOL	OK TO TOOL			
KEY A, BLACK	33482-1266	A				1	2	3	4	5	6	7					12		OK TO TOOL	OK TO TOOL			
KEY A, BLACK	33482-1265	A									6	7	8	9	10	11			OK TO TOOL	OK TO TOOL			
KEY D, STONE GRAY	33482-1264				D	1	2	3	4	5	6	7	8	9	10	11	12		OK TO TOOL	OK TO TOOL			
KEY C, DARK GRAY	33482-1263				C	1	2	3	4	5	6	7	8	9	10	11	12		TOOLED BUT NOT VALIDATED	OK TO TOOL	OK TO TOOL		
KEY D, STONE GRAY	33482-1262				D														OK TO TOOL	OK TO TOOL			
KEY C, DARK GRAY	33482-1261				C														TOOLED BUT NOT VALIDATED	OK TO TOOL	OK TO TOOL		
KEY A, BLACK	33482-1260	A														11	12		OK TO TOOL	OK TO TOOL			
KEY A, BLACK	33482-1259	A				1	2	3	4	5				9	10	11	12		OK TO TOOL	OK TO TOOL			
KEY A, BLACK	33482-1258	A					2	3								11			OK TO TOOL	OK TO TOOL			
KEY A, BLACK	33482-1257	A				1								9	10	12			OK TO TOOL	OK TO TOOL			
KEY A, BLACK	33482-1256	A									6	7		9					OK TO TOOL	OK TO TOOL			
KEY A, BLACK	33482-1255	A					2	3	4	5	6	7			10	11	12		OK TO TOOL	OK TO TOOL			
KEY A, BLACK	33482-1254	A					2	3	4	5					10	11	12		OK TO TOOL	OK TO TOOL			
KEY A, BLACK	33482-1253	A					2	3	4	5	6	7	8		10	11	12		OK TO TOOL	OK TO TOOL			
KEY A, BLACK	33482-1252	A										7							OK TO TOOL	OK TO TOOL			
KEY A, BLACK	33482-1251	A					2		4	5			8		10	11			OK TO TOOL	OK TO TOOL			
KEY A, BLACK	33482-1250	A							4	5	6	7	8	9					OK TO TOOL	OK TO TOOL			
KEY A, BLACK	33482-1249	A													10	11	12		OK TO TOOL	OK TO TOOL			
KEY A, BLACK	33482-1248	A				1			3	4	5	6	7	8					OK TO TOOL	OK TO TOOL			
KEY A, BLACK	33482-1247	A					2	3	4			7	8						OK TO TOOL	OK TO TOOL			
KEY A, BLACK	33482-1246	A														11			OK TO TOOL	OK TO TOOL			
KEY A, BLACK	33482-1245	A												9	10	11	12		OK TO TOOL	OK TO TOOL			
KEY A, BLACK	33482-1244	A					2		4										OK TO TOOL	OK TO TOOL			
KEY A, BLACK	33482-1243	A					2							9	10				OK TO TOOL	OK TO TOOL			
KEY A, BLACK	33482-1242	A										7	8						OK TO TOOL	OK TO TOOL			
KEY A, BLACK	33482-1241	A										7	8	9	10	11			OK TO TOOL	OK TO TOOL			

BLOCKED TERMINAL		
CAVITY WITH A NUMBER INDICATES BLOCKED TERMINAL POSITION		
CAVITY WITHOUT A NUMBER INDICATES OPEN TERMINAL POSITION		
STANDARD PLR	NATURAL	SPS/NYLON GF20
MAT SEAL	BURNT ORANGE	INHERENTLY LUBRICATED SILICONE
GROMMET CAP	BLACK	SPS/NYLON GF20
HOUSING KEYING OPTION D	STONE GRAY	SPS/NYLON GF20
HOUSING KEYING OPTION C	DARK GRAY	SPS/NYLON GF20
HOUSING KEYING OPTION D	GREEN	SPS/NYLON GF20
HOUSING KEYING OPTION C	BROWN	SPS/NYLON GF20
HOUSING KEYING OPTION B	LIGHT GRAY	SPS/NYLON GF20
HOUSING KEYING OPTION A	BLACK	SPS/NYLON GF20
DESCRIPTION	COLOR	MATERIAL

BOM/APPLICABLE COMPONENTS TABLE

ABBREVIATION	COMPONENT
A	HOUSING KEY A
B	HOUSING KEY B
C	HOUSING KEY C
D	HOUSING KEY D
GC	GROMMET CAP
H	MAT SEAL
P	PLR, STANDARD
BKS	BACKSHELL

ENTER DESCRIPTION IEC NO. UAU2013-1432 DRAWN BY: 2013/03/11 CHECKED BY: 2013/03/13 APPR: VIOSHY 2013/03/15	QUALITY SYMBOLS ∇=0 ∇=0 ∇=0	GENERAL TOLERANCES (UNLESS SPECIFIED) mm INCH 4 PLACES ±0.10 ±0.004 3 PLACES ±0.15 ±0.005 2 PLACES ±0.20 ±0.008 1 PLACE ±0.30 ±0.012 0 PLACE ±0.50 ±0.020	DIMENSION STYLE MM ONLY	SCALE DESIGN UNITS METRIC	THIRD ANGLE PROJECTION	
	DRAFT WHERE APPLICABLE MUST REMAIN WITHIN DIMENSIONS		DRAWN BY DATE DGR1FF1THS 05-16-03	CHECKED BY DATE DGR1FF1THS 05-16-03	TITLE MX150 2X6 BLADE SEALED ASSEMBLY MAT SEAL	
	MATERIAL NO. SEE BOM		APPROVED BY DATE DGR1FF1THS 05-16-03	DOCUMENT NO. SD-33482-121		
	SHEET NO. 9 OF 10			THIS DRAWING CONTAINS INFORMATION THAT IS PROPRIETARY TO MOLEX INCORPORATED AND SHOULD NOT BE USED WITHOUT WRITTEN PERMISSION		

