



Chipsmall Limited consists of a professional team with an average of over 10 year of expertise in the distribution of electronic components. Based in Hongkong, we have already established firm and mutual-benefit business relationships with customers from,Europe,America and south Asia,supplying obsolete and hard-to-find components to meet their specific needs.

With the principle of "Quality Parts,Customers Priority,Honest Operation,and Considerate Service",our business mainly focus on the distribution of electronic components. Line cards we deal with include Microchip,ALPS,ROHM,Xilinx,Pulse,ON,Everlight and Freescale. Main products comprise IC,Modules,Potentiometer,IC Socket,Relay,Connector.Our parts cover such applications as commercial,industrial, and automotives areas.

We are looking forward to setting up business relationship with you and hope to provide you with the best service and solution. Let us make a better world for our industry!



Contact us

Tel: +86-755-8981 8866 Fax: +86-755-8427 6832

Email & Skype: info@chipsmall.com Web: www.chipsmall.com

Address: A1208, Overseas Decoration Building, #122 Zhenhua RD., Futian, Shenzhen, China



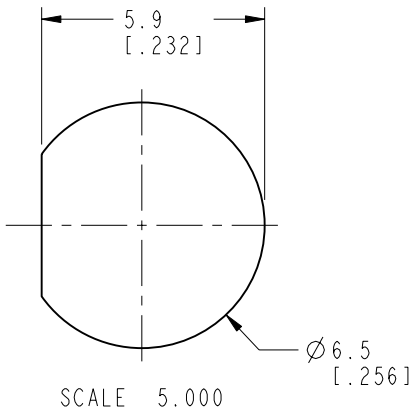
NOTES:

1. MATERIALS AND FINISHES:
BODY, NUT - BRASS, NICKEL PLATING.
CONTACT - BeCu, GOLD PLATING.
INSULATOR - PTFE
2. ELECTRICAL:
A. IMPEDANCE: 50 OHM
B. FREQUENCY RANGE: DC - 6 GHz
C. RETURN LOSS: 30 dB MIN @ 6 GHz
3. MECHANICAL:
A. DURABILITY: 500 CYCLES MIN.
B. TEMPERATURE RANGE: -65°C TO +165°C
4. ENVIRONMENTAL:
A. THERMAL SHOCK PER MIL-STD-202 METHOD 107
TEST CONDITION B (EXCEPT HIGH TEMP @200°C)
B. VIBRATION: MIL-STD-202 METHOD 204 TEST CONDITION B
C. SHOCK: MIL-STD-202 METHOD 213 TEST CONDITION B
D. CORROSION: MIL-STD-202 METHOD 101
TEST CONDITION B 5% SALT SOLUTION
5. PACKAGING:
A. QUANTITY: SINGLE PACK
B. MARKING: BAG TO BE MARKED:
"AMPHENOL RF, 34-5023, AND DATE CODE"

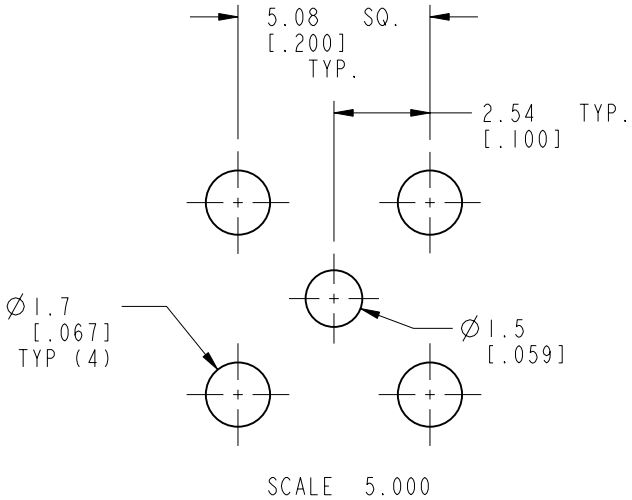
THIRD ANGLE PROJ.

REVISIONS

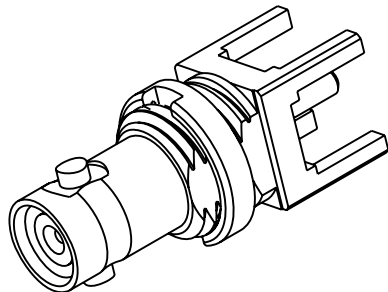
REV	DESCRIPTION	DATE	ECO	APPR
A	RELEASE TO MFG.	08-Apr-13	49282	TD



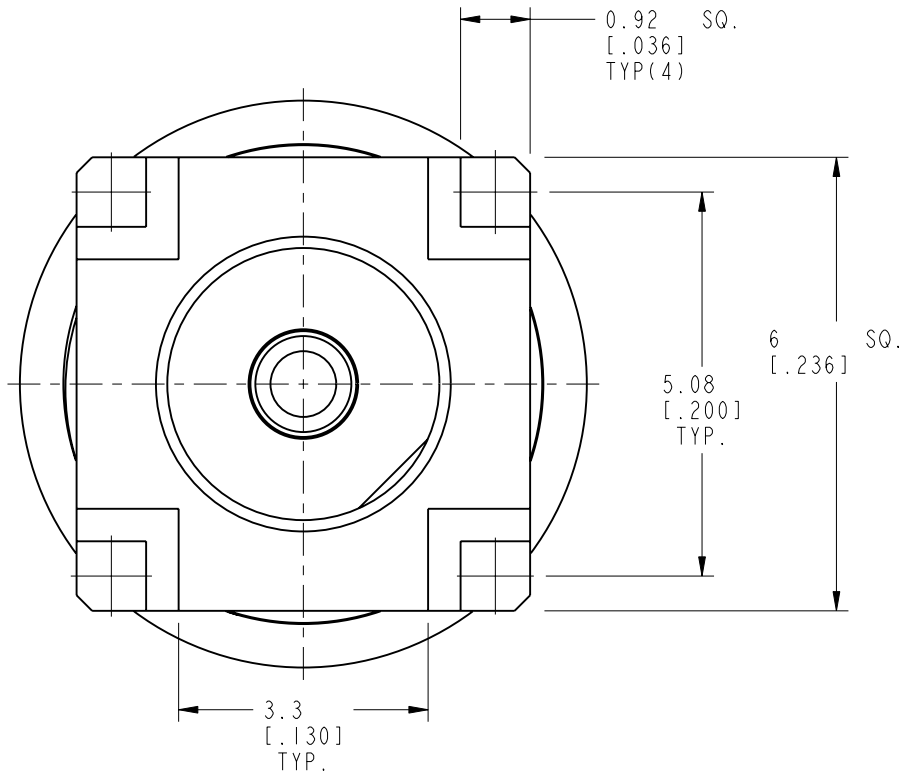
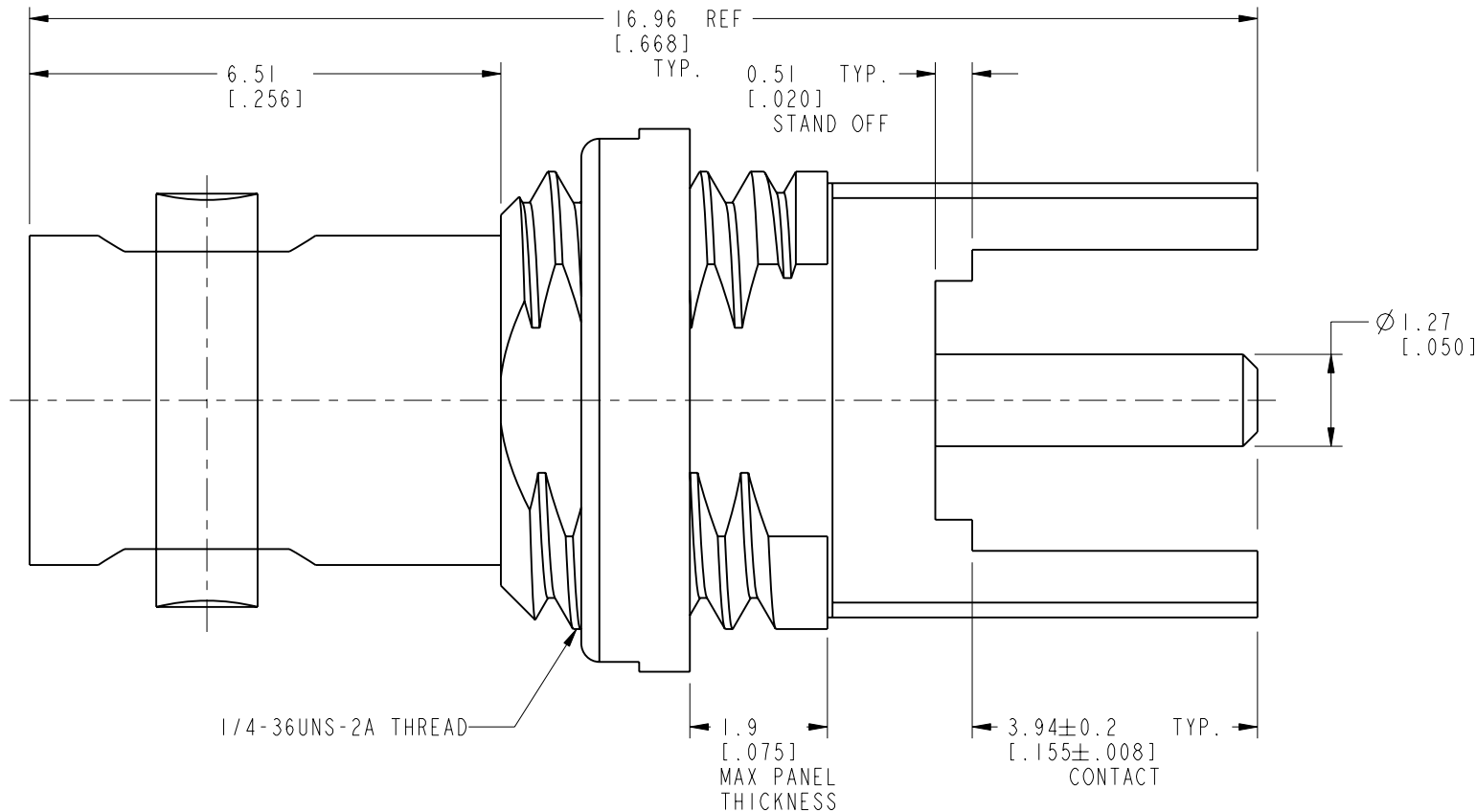
RECOMMENDED PANEL CUTOUT DIMENSIONS



RECOMMENDED MOUNTING HOLE DIMENSIONS



SCALE 3.000



CUSTOMER OUTLINE DRAWING

ALL OTHER SHEETS ARE FOR INTERNAL USE ONLY

UNLESS OTHERWISE SPECIFIED, DIMENSIONS ARE IN METRIC AND TOLERANCES ARE: <0.5mm 0.5 - 6mm 6 - 30mm 30 - 120mm ANGLES ± 0.05mm ±0.1mm ±0.2mm ± 0.3mm ±1° NOTICE - These drawings, specifications, or other data (1) are, and remain the property of Amphenol corp. (2) must be returned upon request; and (3) are confidential and not to be disclosed to any person other than those to whom they are given by Amphenol Corp. the furnishing of these drawings, specifications, or other data by Amphenol Corp., or to any other person to anyone for any purpose is not to be regarded by implication or otherwise in any manner licensing, granting rights to permitting such holder or any other person to manufacture, use or sell any product, process or design, patented or otherwise, that may in any way be related to or disclosed by said drawings, specifications, or other data.	MATERIAL	DRAWN	DATE	TITLE		Amphenol RF	
	SEE NOTES	T.DENG	08-Apr-13				
		ENGINEER	DATE	50 OHM HD BNC BHD JACK PCB THRU HOLE RECEPTACLE 4 LEGS		www.amphenolrf.com	
	CLEMENT	11-Jul-12					
	REFERENCE	APPROVED	DATE	SCALE: 10.0:1.0		SHEET 2 OF 2	
	EAR # 5400	H.HE	08-Apr-13				
CONFIGURATION LEVEL:	CAD FILE	DWG SIZE		REV			
FINISH						B	
		DRAWING NO. 34-5023					
		ITEM NO. 34-5023					
		PART NO. 34-5023					