



Chipsmall Limited consists of a professional team with an average of over 10 year of expertise in the distribution of electronic components. Based in Hongkong, we have already established firm and mutual-benefit business relationships with customers from,Europe,America and south Asia,supplying obsolete and hard-to-find components to meet their specific needs.

With the principle of "Quality Parts,Customers Priority,Honest Operation,and Considerate Service",our business mainly focus on the distribution of electronic components. Line cards we deal with include Microchip,ALPS,ROHM,Xilinx,Pulse,ON,Everlight and Freescale. Main products comprise IC,Modules,Potentiometer,IC Socket,Relay,Connector.Our parts cover such applications as commercial,industrial, and automotives areas.

We are looking forward to setting up business relationship with you and hope to provide you with the best service and solution. Let us make a better world for our industry!



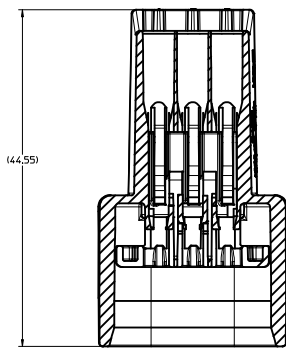
Contact us

Tel: +86-755-8981 8866 Fax: +86-755-8427 6832

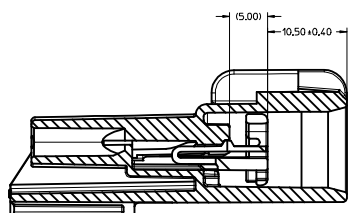
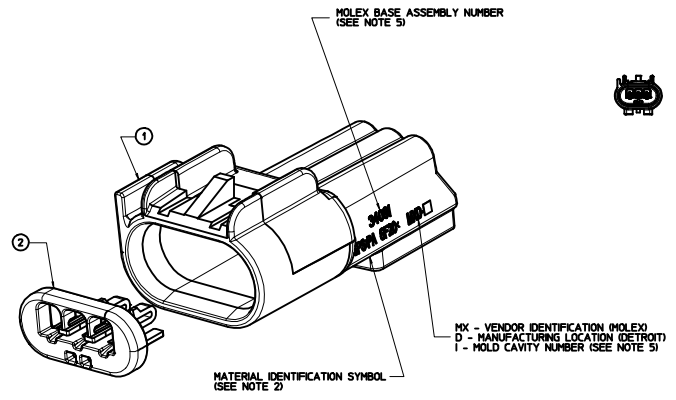
Email & Skype: info@chipsmall.com Web: www.chipsmall.com

Address: A1208, Overseas Decoration Building, #122 Zhenhua RD., Futian, Shenzhen, China

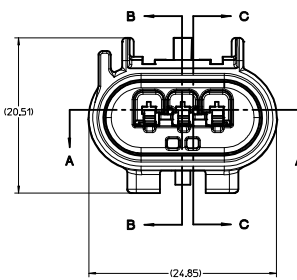




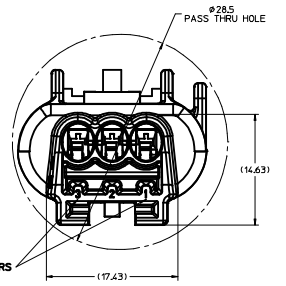
SECTION A-A



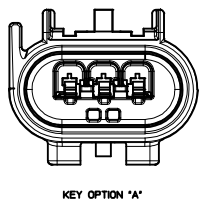
SECTION C-C
TPA SHOWN IN PRELOCK



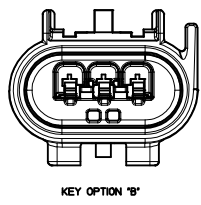
SECTION B-B



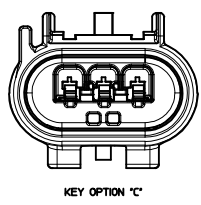
CIRCUIT ID NUMBERS



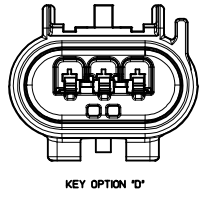
KEY OPTION 'A'



KEY OPTION 'B'



KEY OPTION 'C'



KEY OPTION 'D'

MOLEX ASH NUMBERS	STATUS
34091-0003	SALEABLE
34091-0004	SALEABLE
34091-0005	SALEABLE
34091-0006	SALEABLE
34091-0007	SALEABLE

ITEM	DESCRIPTION	COLOR	PART NUMBER	MATERIAL	NO. OF ITEMS REQUIRED
1	HOUSING - MALE 3WAY (KEY OPTION 'C')	BROWN	34092-0003	SPS/PA GF20%	1
	HOUSING - MALE 3WAY (KEY OPTION 'D')	GREEN	34092-0004	SPS/PA GF20%	1
	HOUSING - MALE 3WAY (KEY OPTION 'D')	BLACK	34092-0005	SPS/PA GF20%	1
	HOUSING - MALE 3WAY (KEY OPTION 'C')	DARK GRAY	34092-0006	SPS/PA GF20%	1
	HOUSING - MALE 3WAY (KEY OPTION 'D')	STONE GRAY	34092-0007	SPS/PA GF20%	1
2	TERMINAL POSITION ASSURANCE DEVICE (TPA)	NATURAL	34093-0001	PBT GF30%	1 1 1 1 1 1

TERMINAL/WIRE/SEAL APPLICATIONS						
DESCRIPTION	PLATING	FORD COMPONENT NO.	MATERIAL/SPEC. NO.	WIRE TYPE AND SIZE ESH-MIL123-A	WIRE DIAMETER RANGE	WIRE SEAL COLOR
15 TERMINAL OH	TN	978G-14421-ADA	COPPER ALLOY/WSS-H99P23-B	22-20 AWG	1.19 - 1.65 O.D.	978G-10C390-SBA PINK
15 TERMINAL OH	TN	978G-14421-AEA	COPPER ALLOY/WSS-H99P23-B	18-16 AWG	1.60 - 2.10 O.D.	XW43-14603-AA GREEN
15 TERMINAL OH	GOLD	978G-14421-AHA	COPPER ALLOY/WSS-H99P23-B	22-20 AWG	1.19 - 1.65 O.D.	978G-10C390-SBA PINK
15 TERMINAL OH	GOLD	978G-14421-AJA	COPPER ALLOY/WSS-H99P23-B	18, 16 AWG	1.60 - 2.10 O.D.	XW43-14603-AA GREEN

- UNLESS OTHERWISE SPECIFIED:
- FINAL CONNECTOR ASSEMBLY MUST MATE TO RECEPTACLE ASSEMBLY SPECIFIED ON FORD DRAWINGS 4L3T-14A464-VA AND 5L3T-14A464-BA
 - WHEREVER SIZE PERMITS, ALL PLASTIC PARTS MUST HAVE MATERIAL IDENTIFICATION SYMBOLS CLEARLY MARKED.
 - CHANGES IN DESIGN COMPOSITION OR PROCESSING FROM THE PART PREVIOUSLY APPROVED FOR PRODUCTION REQUIRES PRIOR ENGINEERING APPROVAL.
 - PARTS MUST BE FREE OF SCRATCHES, DISCOLORATION, SALT RESIDUE OR OTHER IMPERFECTIONS THAT MAY AFFECT FUNCTION OR FIT OF PARTS.
 - SOURCE IDENTIFICATION MARK, PRODUCTION DATE CODE AND MOLEX ASSEMBLY PART NUMBER MUST BE PERMANENTLY APPLIED ON THE PART WITH 15mm LETTER SIZE FROM THE BOTTOM TO THE TOP OF THE CHARACTER AND LEGIBLE WHEREVER PACKAGE SIZE PERMITS OR OTHER AGREEMENTS ARE MADE.
 - PART MUST CONFORM TO THE ELECTRICAL CONNECTION SYSTEM DESIGN SPECIFICATION (SDS) REVISION 8 (DATED 11-20-00).
 - PART MUST CONFORM TO SAE/USCAR-2 REV. 3 DATED APRIL 2001 - CLASS 3
 - MAXIMUM USER FORCE TO MATE CONNECTOR FULLY POPULATED WITH TIN TERMINALS SHALL BE 55 N.
 - FOR BLADE TERMINALS AND WIRE SEALS TO BE USED WITH THIS ASSEMBLY, SEE TABLE FOR APPLICABLE COMPONENTS.
 - 0.3mm MAXIMUM RADIUS PERMISSIBLE ON EDGES AND FILLETS SHOWN AS SHARP.
 - IT IS INTENDED TO COMPLY WITH USCAR DRAWING NO. 150-S-003-1-202 WITH THE FOLLOWING EXCEPTIONS:
R60) WAS 12
R40) WAS 34.20
R30) WAS R10
 - PACKAGING: PLEASE REFER TO PK-31900-004

ENTER DESCRIPTION EC NO. UAU2076-0785 DRAWING/REV 2016/05/12 APPR. WOSWY 2016/08/05 REV	QUALITY SYMBOLS 	GENERAL TOLERANCES (UNLESS SPECIFIED) mm INCH 4 PLACES ± --- ± --- 3 PLACES ± --- ± --- 2 PLACES ± --- ± --- 1 PLACE ± --- ± --- ANGULAR ± ---	DIMENSION STYLE MM ONLY DRAWN BY DLANGOLF DATE 11/20/02 CHECKED BY RKAKKURI DATE 11/20/02 APPROVED BY CPENDLETON DATE 11/20/02 MATERIAL NO. DOCUMENT NO.	SCALE 4:1 DESIGN UNITS METRIC THIRD ANGLE PROJECTION
	BLADE CONNECTOR 3WAY 15MM CABLE SEAL			
	SEE CHART SIZE THIS DRAWING CONTAINS INFORMATION THAT IS PROPRIETARY TO MOLEX INCORPORATED AND SHOULD NOT BE USED WITHOUT WRITTEN PERMISSION			

MOLEX MOLEX INCORPORATED
SD-34091-001
SHEET NO. 1 OF 1