



Chipsmall Limited consists of a professional team with an average of over 10 year of expertise in the distribution of electronic components. Based in Hongkong, we have already established firm and mutual-benefit business relationships with customers from,Europe,America and south Asia,supplying obsolete and hard-to-find components to meet their specific needs.

With the principle of “Quality Parts,Customers Priority,Honest Operation,and Considerate Service”,our business mainly focus on the distribution of electronic components. Line cards we deal with include Microchip,ALPS,ROHM,Xilinx,Pulse,ON,Everlight and Freescale. Main products comprise IC,Modules,Potentiometer,IC Socket,Relay,Connector.Our parts cover such applications as commercial,industrial, and automotives areas.

We are looking forward to setting up business relationship with you and hope to provide you with the best service and solution. Let us make a better world for our industry!



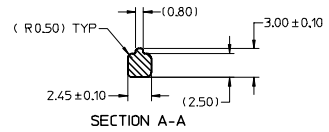
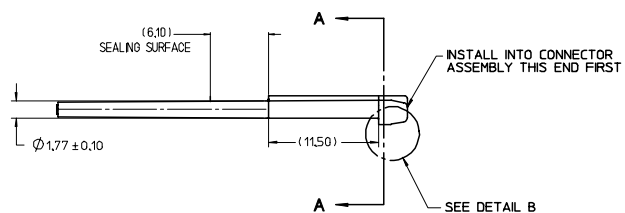
Contact us

Tel: +86-755-8981 8866 Fax: +86-755-8427 6832

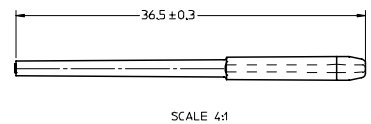
Email & Skype: info@chipsmall.com Web: www.chipsmall.com

Address: A1208, Overseas Decoration Building, #122 Zhenhua RD., Futian, Shenzhen, China

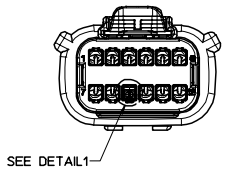




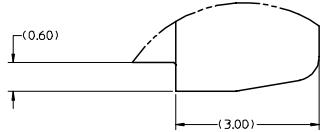
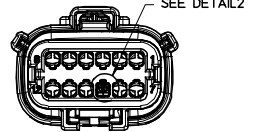
SCALE 1:1



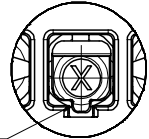
REAR VIEW FEMALE CONNECTOR ASSEMBLY



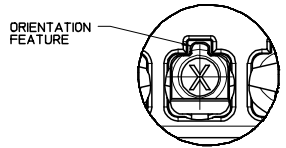
REAR VIEW MALE CONNECTOR ASSEMBLY



DETAIL B SCALE 20:1



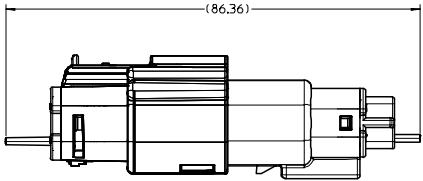
DETAIL 1 SCALE 10:1
INSTALL SEAL PLUG INTO RECEPTACLE ASSEMBLY AS SHOWN ONLY
SEE NOTE 7



DETAIL 2 SCALE 10:1
INSTALL SEAL PLUG INTO BLADE ASSEMBLY AS SHOWN ONLY
SEE NOTE 7

NOTES: UNLESS OTHERWISE SPECIFIED

1. MATERIAL: POLYESTER (PBT), GLASS FILLED.
2. MEETS USCAR 2, REV 3 SPECIFICATION.
3. SHALL CONFORM TO PRODUCT SPECIFICATION: PS-33471-000, PS-33472-000, PS-33476-000
4. SHALL CONFORM TO PACKAGING SPECIFICATION: PK-31300-438
5. MATES WITH MOLEX MX150 CONNECTORS 33471, 33481, 33472, 33482, 33476, 33486.
6. DO NOT USE SEAL PLUG IN A SHORTING BAR CAVITY LOCATION THAT IS MATED TO SHORTING BAR MALE TERMINAL P/N (31296-0008). A STUBBING CONDITION WOULD OCCUR.
7. SEAL PLUG WILL LOCK INTO HOUSING LOCKING FINGER WHEN INSTALLED IN PROPER ORIENTATION. USE PUSH, CLICK, PULL METHOD FOR INSTALLATION.
8. PLEASE REFER TO MX150 USER MANUAL FOR APPLICATION AND PROCESSING INFO AT WWW.MOLEX.COM.



VIEW SHOWING SEAL PLUG ASSEMBLED WITH MOLEX CONNECTORS SEE NOTE 5
SCALE 2:1

| | | | | | | | | | |
|---|-----------------------|---------------------------------------|---|-----------------|--------------------|--------------------------|------------------|------------------------|--|
| ENTER DESCRIPTION EC NO: UAU2007-0167 DRAWN BY: HHS 2006/09/14 CHECKED BY: HHS 2006/09/14 APPR: SHARCEAU 2006/09/14 | QUALITY SYMBOLS | GENERAL TOLERANCES (UNLESS SPECIFIED) | | DIMENSION STYLE | | SCALE | DESIGN UNITS | THIRD ANGLE PROJECTION | |
| | ▼=0 ▽=0 | mm | INCH | MM ONLY | | 4:1 | METRIC | | |
| | | 4 PLACES ± --- ± --- | | DRAWN BY | DATE | TITLE | | | |
| | | 3 PLACES ± --- ± --- | | MVANSLAM | 10/27/05 | MX150 CAVITY PLUG SEALED | | | |
| | 2 PLACES ± 0.10 ± --- | | CHECKED BY | DATE | MOLEX INCORPORATED | | | | |
| | 1 PLACE ± 0.3 ± --- | | ABUTCHER | 10/27/05 | | | | | |
| | ANGULAR ± 3 ° | | APPROVED BY | DATE | | | | | |
| | | | SHARCEAU | 10/27/05 | | | | | |
| | | | MATERIAL NO. | | DOCUMENT NO. | | | | |
| | | | 343450001 | | SD-34345-001 | | SHEET NO. 1 OF 1 | | |
| | | | DRAFT WHERE APPLICABLE MUST REMAIN WITHIN DIMENSIONS | | | | | | |
| | | | THIS DRAWING CONTAINS INFORMATION THAT IS PROPRIETARY TO MOLEX INCORPORATED AND SHOULD NOT BE USED WITHOUT WRITTEN PERMISSION | | | | | | |