



Chipsmall Limited consists of a professional team with an average of over 10 year of expertise in the distribution of electronic components. Based in Hongkong, we have already established firm and mutual-benefit business relationships with customers from,Europe,America and south Asia,supplying obsolete and hard-to-find components to meet their specific needs.

With the principle of "Quality Parts,Customers Priority,Honest Operation,and Considerate Service",our business mainly focus on the distribution of electronic components. Line cards we deal with include Microchip,ALPS,ROHM,Xilinx,Pulse,ON,Everlight and Freescale. Main products comprise IC,Modules,Potentiometer,IC Socket,Relay,Connector.Our parts cover such applications as commercial,industrial, and automotives areas.

We are looking forward to setting up business relationship with you and hope to provide you with the best service and solution. Let us make a better world for our industry!



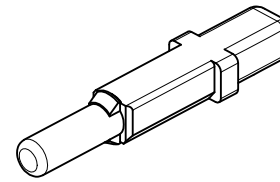
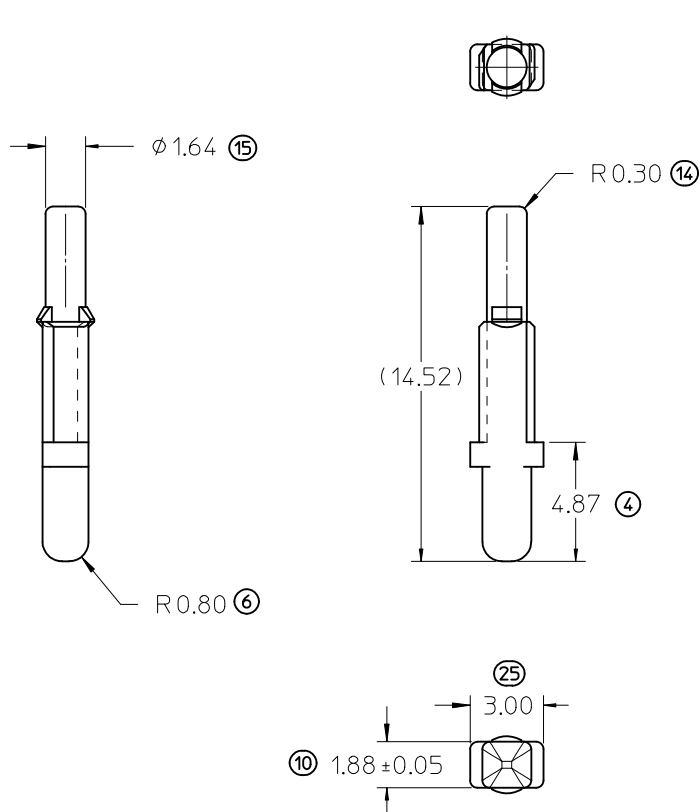
Contact us

Tel: +86-755-8981 8866 Fax: +86-755-8427 6832

Email & Skype: info@chipsmall.com Web: www.chipsmall.com

Address: A1208, Overseas Decoration Building, #122 Zhenhua RD., Futian, Shenzhen, China





NOTES: UNLESS OTHERWISE SPECIFIED

1. MATERIAL:

- A. RESIN:
 - 1. NYLON BLEND
 - 2. COLOR: STONE GREY

2. DESIGN - GENERAL:

- A. THIS IS A 100% CAD GENERATED PART. THE CAD MATHEMATICAL DATA IS THE MASTER FOR THIS PART. FOR DIMENSIONAL OR ANY SPECIAL TOOLING INFORMATION NOT SHOWN ON THIS DRAWING, ANALYZE THE CAD MODEL.
- B. TOLERANCES:
 - a. LINEAR
 - 0.X ± 0.30
 - 0.XX ± 0.10
 - 0.XXX ± 0.10
 - b. ANGULAR X° ± 3°
 - c. 0.2 A B C

3. SYSTEM REQUIREMENTS:

- A. THIS GROMMET SEAL PLUG MATES TO ALL HRNS CONN ASSY PART NUMBERS IDENTIFIED IN MOLEX SD-34566-001 AND SD-34576-001
- B. WHEN TESTED TO SAE/USCAR-2 REV: 3, APRIL 2001, OR GMW #3191, AUGUST 22, 2000 (DRAFT).
 - 1. GMW #3191 AUGUST 22, 2000 (DRAFT); TEMPERATURE CLASS 3, SEALING CLASS 3, VIBRATION CLASS 2
 - 2. RESTRICTED AND REPORTABLE CHEMICALS PER GMW #3059, REV: D AUGUST 2002
 - 3. MX123 0.64 GROMMET SEAL PLUG USER FORCES
 - a. INSERTION FORCE INTO LOCK POSITION: <= 40N
 - b. REMOVAL FORCE FROM LOCK POSITION: >= 5N AND <= 40N

EC NO: UAU2012-0906 DRWN: BHU02 2012/02/08 CHKD: APPR: VKOSHY 2012/02/10 A4	QUALITY SYMBOLS	GENERAL TOLERANCES (UNLESS SPECIFIED)	SCALE 5:1	DESIGN UNITS METRIC	THIRD ANGLE PROJECTION	REVISE ON CAD ONLY	
	▽ = 0 ∇ = 0	mm INCH	DIMENSION STYLE MM ONLY	TITLE			
		4 PLACES ± --- ± ---	DRAWN BY JSZYMKOW	MX123			
		3 PLACES ± --- ± ---	DATE 2004/01/23	0.64 GROMMET SEAL PLUG			
	2 PLACES ± --- ± ---	CHECKED BY YLEPOTTI	MOLEX INCORPORATED				
	1 PLACE ± --- ± ---	DATE 2004/01/23	MATERIAL NO. 34586-0001				
	ANGULAR ± --- °	DATE 2004/01/23	DOCUMENT NO. SD-34586-001				
	DRAFT WHERE APPLICABLE	DATE 2004/01/23	SHEET NO. 1 OF 1				
	MUST REMAIN WITHIN DIMENSIONS		THIS DRAWING CONTAINS INFORMATION THAT IS PROPRIETARY TO MOLEX INCORPORATED AND SHOULD NOT BE USED WITHOUT WRITTEN PERMISSION				