



Chipsmall Limited consists of a professional team with an average of over 10 year of expertise in the distribution of electronic components. Based in Hongkong, we have already established firm and mutual-benefit business relationships with customers from,Europe,America and south Asia,supplying obsolete and hard-to-find components to meet their specific needs.

With the principle of “Quality Parts,Customers Priority,Honest Operation,and Considerate Service”,our business mainly focus on the distribution of electronic components. Line cards we deal with include Microchip,ALPS,ROHM,Xilinx,Pulse,ON,Everlight and Freescale. Main products comprise IC,Modules,Potentiometer,IC Socket,Relay,Connector.Our parts cover such applications as commercial,industrial, and automotives areas.

We are looking forward to setting up business relationship with you and hope to provide you with the best service and solution. Let us make a better world for our industry!



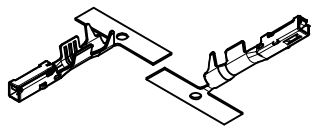
Contact us

Tel: +86-755-8981 8866 Fax: +86-755-8427 6832

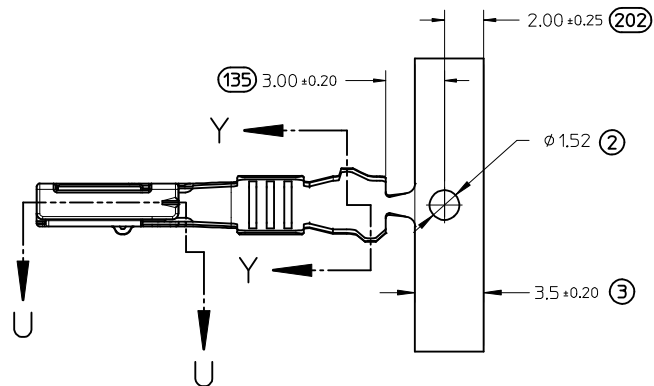
Email & Skype: info@chipsmall.com Web: www.chipsmall.com

Address: A1208, Overseas Decoration Building, #122 Zhenhua RD., Futian, Shenzhen, China

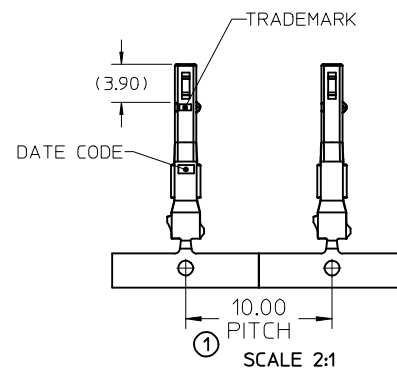
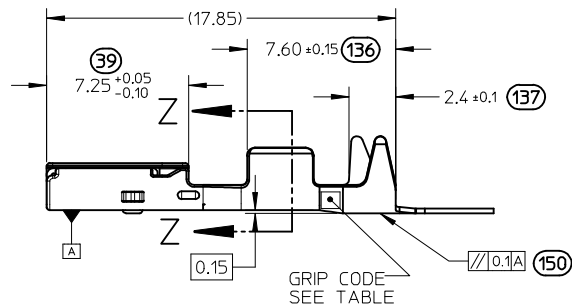
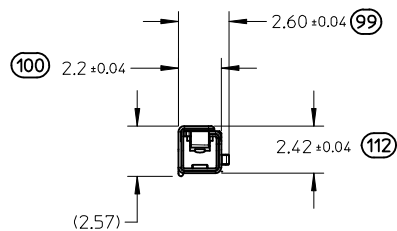




ISO VIEWS
NOT TO SCALE

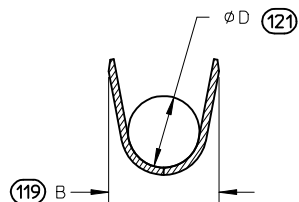
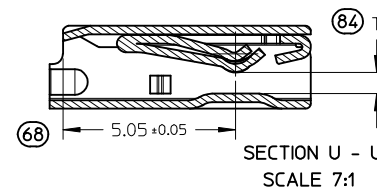
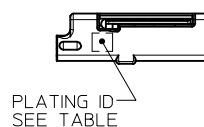


PART NUMBERS		GRIP CODE	WIRE GAUGE		PLATING		VERSION	LUBRICATION	DIM A ±0.2	DIM B ±0.3	DIM C ±0.1	DIM D ±0.1	DIM T
D-WIND (LEFT PAYOFF)	B-WIND (RIGHT PAYOFF)		METRIC mm ²	SAE AWG	TYPE	ID							
34805-0111	34805-0211	S	0.30-0.50	22					2	2.6	1	1.54	
34805-0112	34805-0212	M	0.75-1.25	20/18	TIN (Sn)	NO MARK	STANDARD	NO	2.6	3.2	1.5	1.98	0.62 ±0.03
34805-0113	34805-0213	L	1.25-2.00	16/14					3.1	3.9	1.8	2.44	

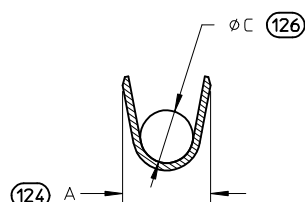


NOTES: (UNLESS OTHERWISE SPECIFIED)

1. MATERIAL: COPPER ALLOY
2. PACKAGING PER SD-31301-053
3. CRIMPING PER AS-502307-001
4. PROBING IS NOT PERMITTED AT ANY LOCATION ON TERMINAL CONTACT SURFACES



SECTION Y-Y
SCALE 6:1
INSULATION GRIP



SECTION Z-Z
SCALE 6:1
CONDUCTOR GRIP

ENTER DESCRIPTION EC NO: UAU2013-0899 DRWN:DHENANI 2012/12/11 CHKD: APPR:BMOSER 2012/12/12 DESCRIPTION REV		GENERAL TOLERANCES (UNLESS SPECIFIED)		DIMENSION STYLE MM ONLY		SCALE 4:1	DESIGN UNITS METRIC	THIRD ANGLE PROJECTION	
				DRAWN BY DATE		TITLE CTX150 MAT SEAL RECEPTACLE TERMINAL			
				CHECKED BY DATE					
		4 PLACES ± --- ± ---		BMOSER 2012/08/09		molex			
		3 PLACES ± 0.08 ± ---		APPROVED BY DATE					
		2 PLACES ± 0.08 ± ---		BMOSER 2011/04/11					
		1 PLACE ± 0.08 ± ---		MATERIAL NO.		DOCUMENT NO.			
0 PLACE ± --- ± ---		SEE NOTES		SD-34805-001				1 OF 1	
ANGULAR ± 1 °		SIZE B		THIS DRAWING CONTAINS INFORMATION THAT IS PROPRIETARY TO MOLEX INCORPORATED AND SHOULD NOT BE USED WITHOUT WRITTEN PERMISSION					
DRAFT WHERE APPLICABLE MUST REMAIN WITHIN DIMENSIONS									