



Chipsmall Limited consists of a professional team with an average of over 10 year of expertise in the distribution of electronic components. Based in Hongkong, we have already established firm and mutual-benefit business relationships with customers from,Europe,America and south Asia,supplying obsolete and hard-to-find components to meet their specific needs.

With the principle of “Quality Parts,Customers Priority,Honest Operation,and Considerate Service”,our business mainly focus on the distribution of electronic components. Line cards we deal with include Microchip,ALPS,ROHM,Xilinx,Pulse,ON,Everlight and Freescale. Main products comprise IC,Modules,Potentiometer,IC Socket,Relay,Connector.Our parts cover such applications as commercial,industrial, and automotives areas.

We are looking forward to setting up business relationship with you and hope to provide you with the best service and solution. Let us make a better world for our industry!



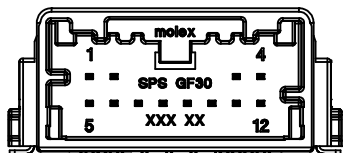
Contact us

Tel: +86-755-8981 8866 Fax: +86-755-8427 6832

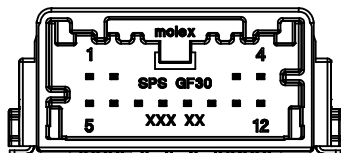
Email & Skype: info@chipsmall.com Web: www.chipsmall.com

Address: A1208, Overseas Decoration Building, #122 Zhenhua RD., Futian, Shenzhen, China

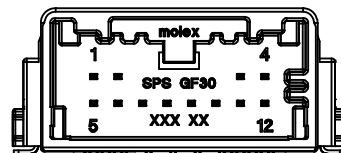




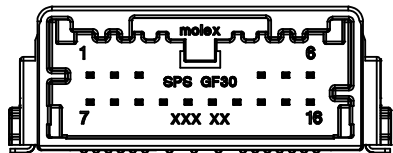
12 CIRCUIT SMT USCAR HEADER
POLARIZATION OPTION A



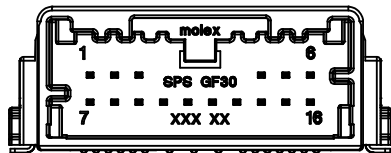
12 CIRCUIT SMT USCAR HEADER
POLARIZATION OPTION B



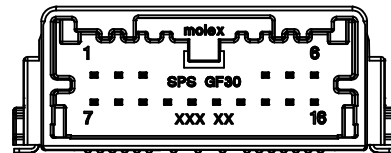
12 CIRCUIT SMT USCAR HEADER
POLARIZATION OPTION C



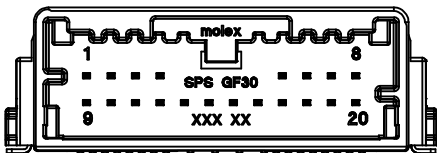
16 CIRCUIT SMT HEADER
POLARIZATION OPTION A



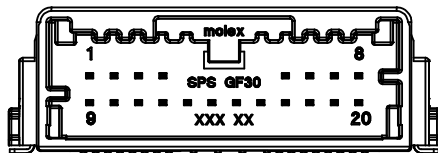
16 CIRCUIT SMT HEADER
POLARIZATION OPTION B



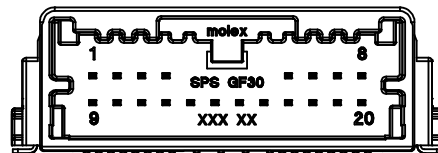
16 CIRCUIT SMT HEADER
POLARIZATION OPTION C



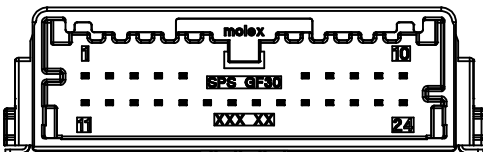
20 CIRCUIT SMT HEADER
POLARIZATION OPTION A



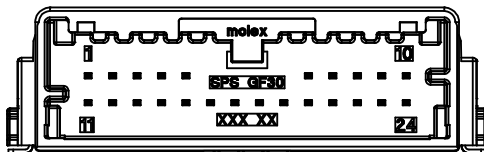
20 CIRCUIT SMT HEADER
POLARIZATION OPTION B



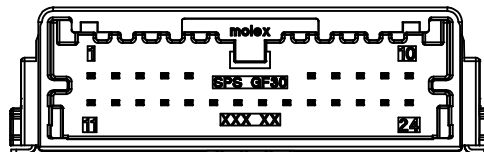
20 CIRCUIT SMT HEADER
POLARIZATION OPTION C



24 CIRCUIT SMT HEADER
POLARIZATION OPTION A



24 CIRCUIT SMT HEADER
POLARIZATION OPTION B



24 CIRCUIT SMT HEADER
POLARIZATION OPTION C

NOTES: VALID UNLESS OTHERWISE SPECIFIED

1. GENERAL:
 - a. APPLICATION SPECIFICATION SEE: AS-34791-020
 - b. PRODUCT SPECIFICATION SEE: PS-34791-020
 - c. PACKAGING SPECIFICATION PER MOLEX DRAWING: SEE CHART
 - d. SOLDERABILITY PER SMES-152
 - e. PARTS MUST BE IN COMPLIANCE TO MOLEX CHEMICAL SUBSTANCES FOR PRODUCTS AND PACKAGING SPECIFICATION: OEHS-699000-300
 - f. DATA MUST BE SUBMITTED UNDER THE MOLEX PART NUMBER TO IMDS (COMPANY ID#13255)
 - g. FLAMMABILITY REQUIREMENT: PER ISO3795 OR GM3191
 - h. VISUAL DEFECTS SHALL MEET COSMETIC STANDARD PS-45499-002 (Class B)
2. DESIGN - MATERIALS:
 - a. SHROUD (PLASTIC HOUSING): SPS 30% GF, 25% REGRIND MAX PER WEIGHT
 - b. BLADES:
 - BASE METAL: C260 BRASS
 - PLATING REQUIREMENTS:
 - TIN:
 - TIN OVER NICKEL:
 - UNDERPLATING:
 - OVERALL NICKEL: 1.25 - 2.25 MICROMETERS THICKNESS
 - OVERPLATING:
 - OVERALL TIN: 2.5 - 4.0 MICROMETERS THICKNESS
 - GOLD:
 - UNDERPLATING:
 - OVERALL NICKEL: 1.25 - 2.25 MICROMETERS THICKNESS
 - OVERPLATING:
 - CONTACT AREA: ELECTRODEPOSITED GOLD
0.76 MICROMETERS MINIMUM HARD GOLD
 - PCB CONTACT AREA: ELECTRODEPOSITED TIN MATTE FINISH
2.5 - 4.0 MICROMETERS THICKNESS
3. DESIGN - GEOMETRY:
 - a. THIS IS A 100% CAD GENERATED PART. THE CAD MATHEMATICAL DATA IS THE MASTER FOR THIS PART. FOR DIMENSIONAL OR ANY INFORMATION NOT SHOWN ON THIS DRAWING, ANALYZE THE CAD MODEL.
 - b. GEOMETRIC DIMENSIONS AND TOLERANCES PER ASME Y14.5M - 2009
 - c. GENERAL TOLERANCES: SEE TITLE BLOCK
 - d. EDGED AND UNDIMENSIONED DETAILS PER ISO13715
 - e. CORNERS SHOWN AS SHARP TO BE R 0.1 MAX
 - f. LETTERING SHALL BE 0.10 MAX RAISED. THIS INCLUDES RECYCLING CODE, PLANT AND CAVITY ID, VENDOR ID, AND CIRCUIT ID.

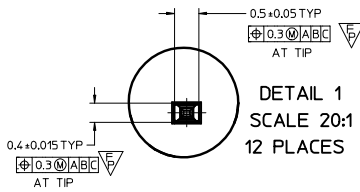
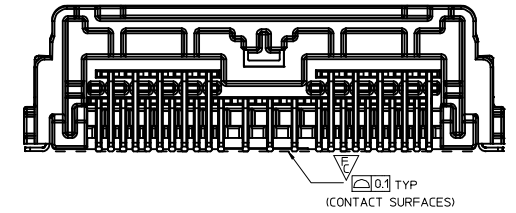
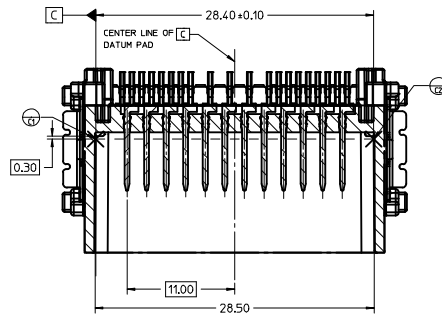
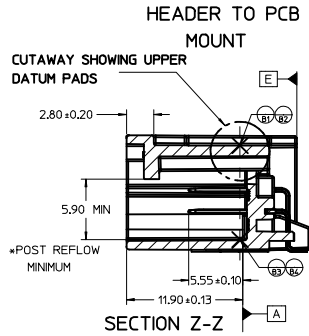
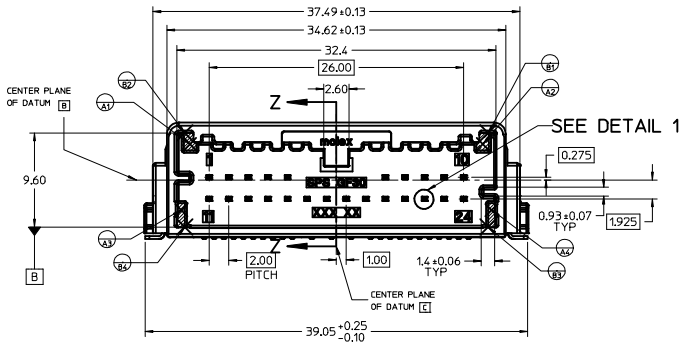
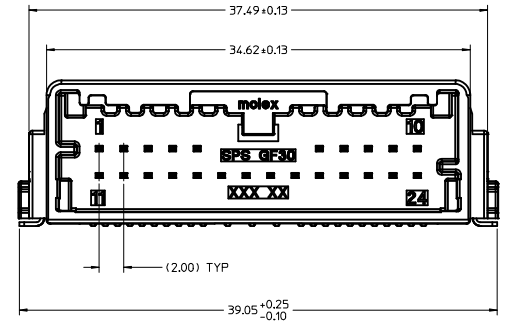
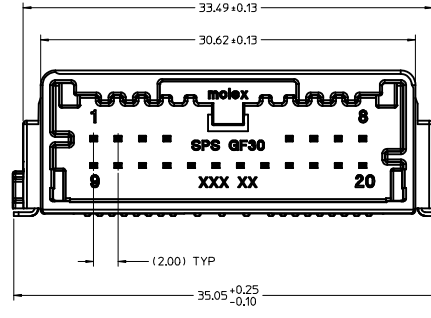
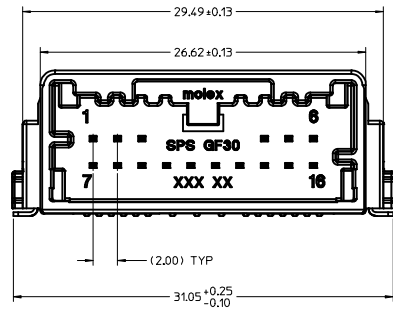
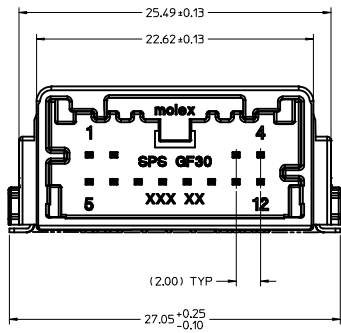
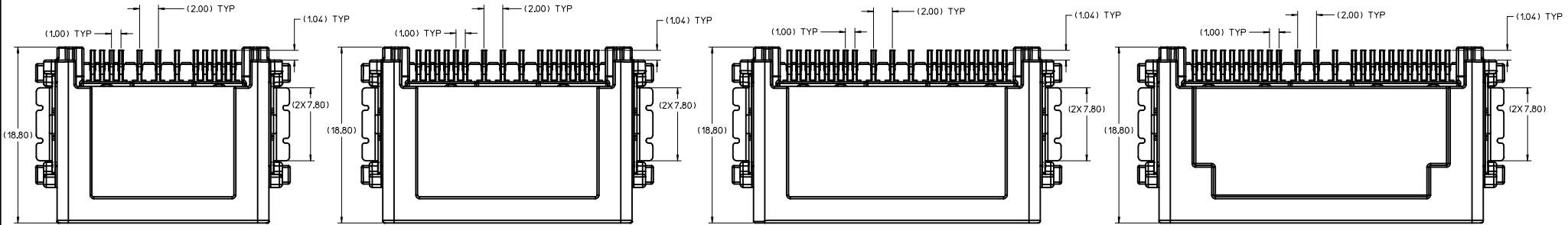
GOLD PLATING EC NO: UAU2017-0683 DRAWN BY: KHEWITT CHYK: 2016/09/26 APPR: RBAUMAN 2017/02/10	QUALITY SYMBOLS ∇=0 ∇=0 ∇=0	GENERAL TOLERANCES (UNLESS SPECIFIED)		DIMENSION STYLE MM ONLY	SCALE 5:1	DESIGN UNITS METRIC	THIRD ANGLE PROJECTION		
		4 PLACES ± --- ± --- 3 PLACES ± --- ± --- 2 PLACES ± 0.10 ± --- 1 PLACE ± 0.20 ± ---	mm INCH	DRAWN BY DATE KHEWITT 2016/09/26	CHECKED BY DATE DATE	TITLE MINI 50 DUAL ROW SMT HEADER ASSEMBLY CONTI DRAWING			
		DRAFT WHERE APPLICABLE MUST REMAIN WITHIN DIMENSIONS		APPROVED BY DATE RBAUMAN 2017/02/10	MATERIAL NO. SEE CHART		MOLEX INCORPORATED		SHEET NO. 1 OF 5
				DOCUMENT NO. RSD-34897-004		THIS DRAWING CONTAINS INFORMATION THAT IS PROPRIETARY TO MOLEX INCORPORATED AND SHOULD NOT BE USED WITHOUT WRITTEN PERMISSION			

12 CKT SMT USCAR HEADER

16 CKT SMT HEADER

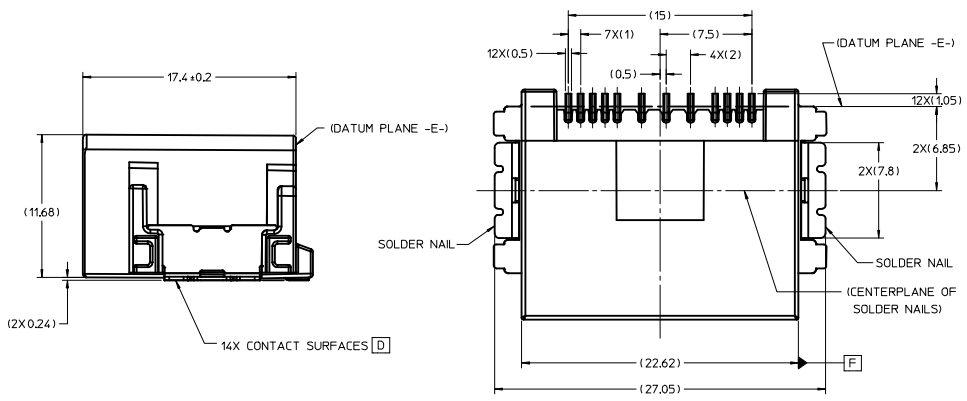
20 CKT SMT HEADER

24 CKT SMT HEADER

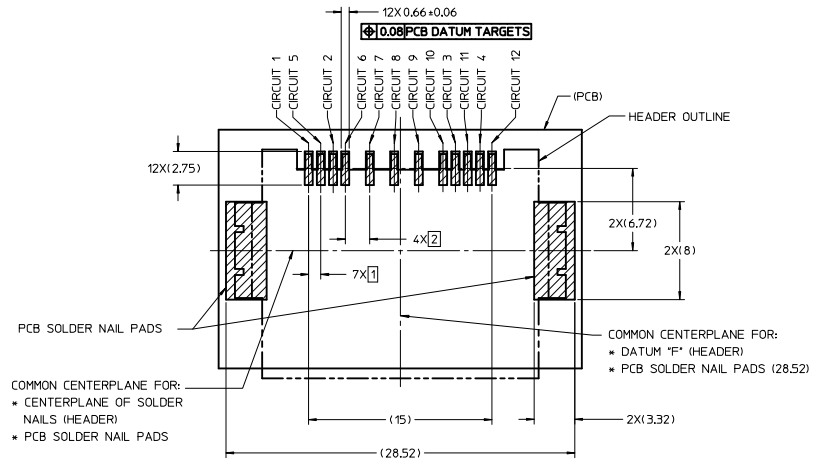


GOLD PLATING EC NO. JAU2017-0683 DRAWN BY KHEWITT 2016/09/26 CHKD: CHYK APPR: RBAUMAN 2017/02/10	QUALITY SYMBOLS	GENERAL TOLERANCES (UNLESS SPECIFIED)	DIMENSION STYLE	SCALE	DESIGN UNITS	THIRD ANGLE PROJECTION
	▽=0	4 PLACES ± mm ± INCH	MM ONLY	5:1	METRIC	☉
	▽=0	3 PLACES ± --- ± ---				
	▽=0	2 PLACES ± 0.10 ± ---				
		1 PLACE ± 0.20 ± ---				
		ANGULAR ± 1°				
		DRAFT WHERE APPLICABLE MUST REMAIN WITHIN DIMENSIONS				
			DRAWN BY KHEWITT 2016/09/26	DATE	TITLE	
			CHECKED BY	DATE		
			APPROVED BY RBAUMAN 2017/02/10	DATE		
			MATERIAL NO.	DOCUMENT NO.		
			SEE CHART			
			MOLEX INCORPORATED			
			RSD-34897-004			
			SHEET NO. 2 OF 5			

RECOMMENDED PCB LAYOUT:



12 CKT SMT USCAR HEADER (BOTTOM VIEW)

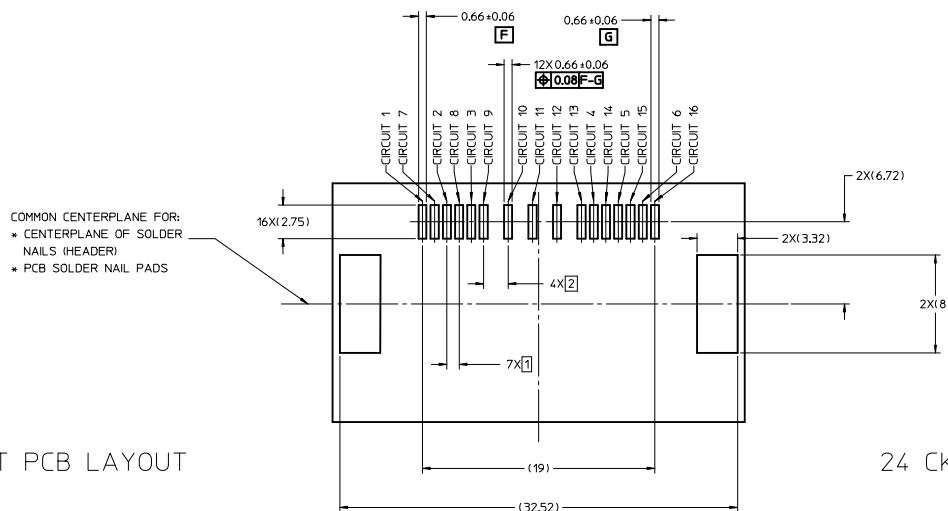


12 CKT PCB LAYOUT
(OTHER CIRCUIT SIZES ARE SIMILAR)

GOLD PLATING IEC NO. UAU2017-0683 DRAWN BY KHEWITT 2016/09/26 CHKD: CHYK APPR: RBAUMAN 2017/02/10 REV:	QUALITY SYMBOLS	GENERAL TOLERANCES (UNLESS SPECIFIED)	DIMENSION STYLE	SCALE	DESIGN UNITS	THIRD ANGLE PROJECTION
	▽=0	4 PLACES ± mm	MM ONLY	10:1	METRIC	☉
	▽=0	3 PLACES ± 0.10				
	▽=0	2 PLACES ± 0.20				
		ANGULAR ± 1°	DRAWN BY DATE	TITLE		
		DRAFT WHERE APPLICABLE MUST REMAIN WITHIN DIMENSIONS	KHEWITT 2016/09/26	MINI 50 DUAL ROW SMT HEADER ASSEMBLY CONTI DRAWING		
			CHECKED BY DATE	molex		
			APPROVED BY DATE	DOCUMENT NO.		
			RBAUMAN 2017/02/10	RSD-34897-004		
			MATERIAL NO.	SHEET NO.		
			SEE CHART	3 OF 5		
			SIZE D	THIS DRAWING CONTAINS INFORMATION THAT IS PROPRIETARY TO MOLEX INCORPORATED AND SHOULD NOT BE USED WITHOUT WRITTEN PERMISSION		

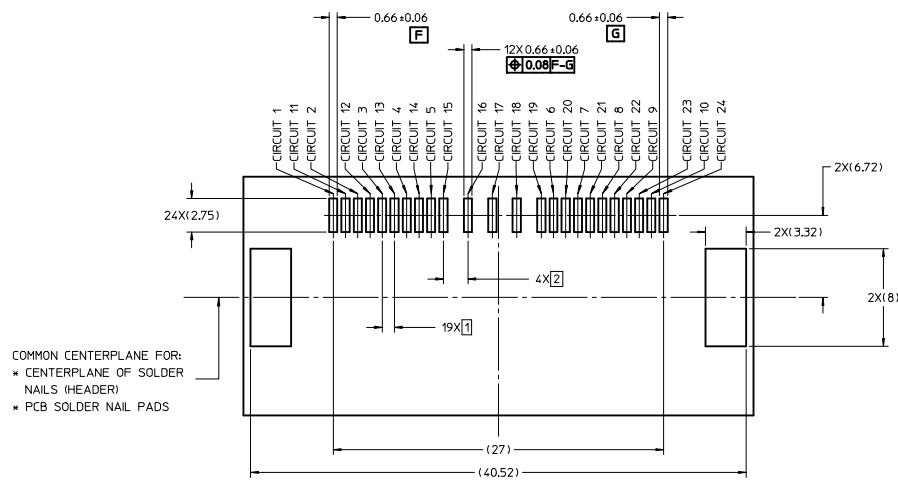
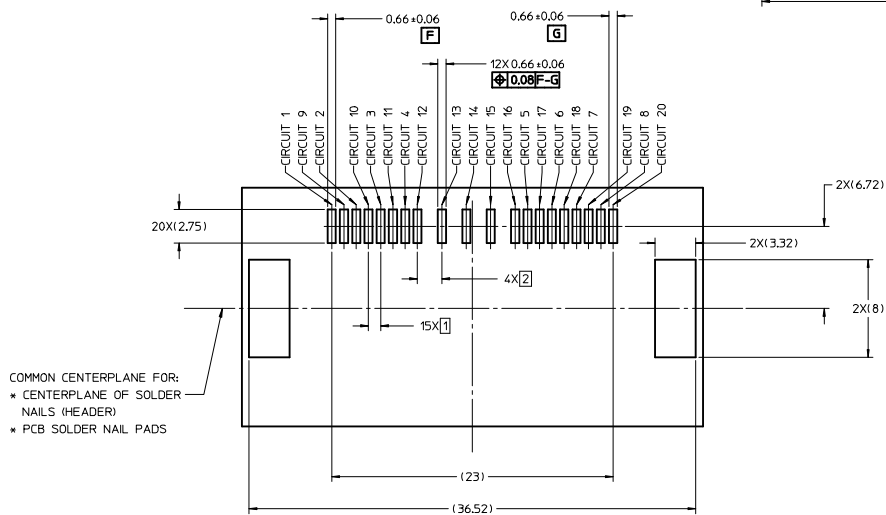
16 CKT PCB LAYOUT

RECOMMENDED PCB LAYOUT:



20 CKT PCB LAYOUT

24 CKT PCB LAYOUT



GOLD PLATING EC NO: UAU2017-0683 DRAWN BY: KHEWITT CHKD: RBAUMAN APPR: RBAUMAN DATE: 2016/09/26 DATE: 2017/02/10	QUALITY SYMBOLS ∇=0 ∇=0 ∇=0	GENERAL TOLERANCES (UNLESS SPECIFIED) mm INCH 4 PLACES ± --- ± --- 3 PLACES ± --- ± --- 2 PLACES ± 0.10 ± --- 1 PLACE ± 0.20 ± --- 0 PLACE ± ±	DIMENSION STYLE MM ONLY	SCALE 5:1	DESIGN UNITS METRIC	THIRD ANGLE PROJECTION	
	DRAFT WHERE APPLICABLE MUST REMAIN WITHIN DIMENSIONS	MATERIAL NO. SEE CHART	DRAWN BY: KHEWITT DATE: 2016/09/26 CHECKED BY: DATE:	APPROVED BY: RBAUMAN DATE: 2017/02/10	TITLE MINI 50 DUAL ROW SMT HEADER ASSEMBLY CONTI DRAWING	DOCUMENT NO. RSD-34897-004	SHEET NO. 4 OF 5
	THIS DRAWING CONTAINS INFORMATION THAT IS PROPRIETARY TO MOLEX INCORPORATED AND SHOULD NOT BE USED WITHOUT WRITTEN PERMISSION						
	SIZE D						

MINI50 SMT DUAL ROW HEADER ASSEMBLIES

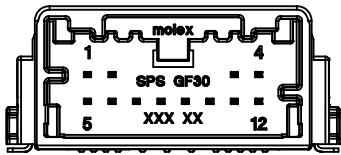
GOLD:

MATERIAL NUMBER TUBE PACKAGING PK-31301-688	MATERIAL NUMBER TAPE AND REEL PACKAGING PK-31301-786	CONFIGURATION	CIRCUIT	POL	COLOR	BLADE PLATING	WEIGHT (g)	MATING COMPONENT	
								UN-BRIDGED	BRIDGED
34897-5120	34897-6120	USCAR	12	A	BLACK	GOLD	2.63	34824-0124	34824-1124
34897-5121	34897-6121	USCAR	12	B	GRAY	GOLD	2.63	34824-0125	34824-1125
34897-5122	34897-6122	USCAR	12	C	DARK GRAY	GOLD	2.64	34824-0126	34824-1126
34897-5160	34897-6160	USCAR	16	A	BLACK	GOLD	2.99	34824-0160	34824-1160
34897-5161	34897-6161	USCAR	16	B	GRAY	GOLD	2.99	34824-0161	34824-1161
34897-5162	34897-6162	USCAR	16	C	DARK GRAY	GOLD	3.00	34824-0162	34824-1162
34897-5200	34897-6200	USCAR	20	A	BLACK	GOLD	3.39	34824-0200	34824-1200
34897-5201	34897-6201	USCAR	20	B	GRAY	GOLD	3.39	34824-0201	34824-1201
34897-5202	34897-6202	USCAR	20	C	DARK GRAY	GOLD	3.39	34824-0202	34824-1202
34897-5240	34897-6240	USCAR	24	A	BLACK	GOLD	3.76	34824-0240	34824-1240
34897-5241	34897-6241	USCAR	24	B	GRAY	GOLD	3.76	34824-0241	34824-1241
34897-5242	34897-6242	USCAR	24	C	DARK GRAY	GOLD	3.75	34824-0242	34824-1242

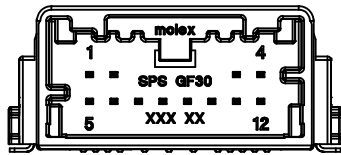
TIN:

MATERIAL NUMBER TUBE PACKAGING PK-31301-688	MATERIAL NUMBER TAPE AND REEL PACKAGING PK-31301-786	CONFIGURATION	CIRCUIT	POL	COLOR	BLADE PLATING	WEIGHT (g)	MATING COMPONENT	
								UN-BRIDGED	BRIDGED
34897-9120	34897-8120	USCAR	12	A	BLACK	TIN OVER NICKEL	2.64	34824-0124	34824-1124
34897-9121	34897-8121	USCAR	12	B	GRAY	TIN OVER NICKEL	2.64	34824-0125	34824-1125
34897-9122	34897-8122	USCAR	12	C	DARK GRAY	TIN OVER NICKEL	2.64	34824-0126	34824-1126
34897-9160	34897-8160	USCAR	16	A	BLACK	TIN OVER NICKEL	3.01	34824-0160	34824-1160
34897-9161	34897-8161	USCAR	16	B	GRAY	TIN OVER NICKEL	3.01	34824-0161	34824-1161
34897-9162	34897-8162	USCAR	16	C	DARK GRAY	TIN OVER NICKEL	3.02	34824-0162	34824-1162
34897-9200	34897-8200	USCAR	20	A	BLACK	TIN OVER NICKEL	3.39	34824-0200	34824-1200
34897-9201	34897-8201	USCAR	20	B	GRAY	TIN OVER NICKEL	3.39	34824-0201	34824-1201
34897-9202	34897-8202	USCAR	20	C	DARK GRAY	TIN OVER NICKEL	3.39	34824-0202	34824-1202
34897-9240	34897-8240	USCAR	24	A	BLACK	TIN OVER NICKEL	3.77	34824-0240	34824-1240
34897-9241	34897-8241	USCAR	24	B	GRAY	TIN OVER NICKEL	3.77	34824-0241	34824-1241
34897-9242	34897-8242	USCAR	24	C	DARK GRAY	TIN OVER NICKEL	3.76	34824-0242	34824-1242

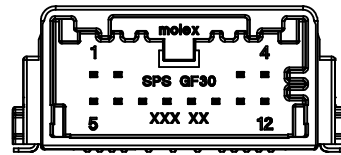
GOLD PLATING EC NO. UAU2017-0683 DRAWN BY KHEWITT 2016/09/26 CHYK APPR:RBAUMAN 2017/02/10 REVISION DESCRIPTION	QUALITY SYMBOLS	GENERAL TOLERANCES (UNLESS SPECIFIED)	DIMENSION STYLE	SCALE	DESIGN UNITS	THIRD ANGLE PROJECTION
	∇=0 ∇=0 ∇=0	mm INCH 4 PLACES ± --- ± --- 3 PLACES ± --- ± --- 2 PLACES ± 0.10 ± --- 1 PLACE ± 0.20 ± --- 0 PLACE ± ±	MM ONLY	10:1	METRIC	MINI 50 DUAL ROW SMT HEADER ASSEMBLY CONTI DRAWING molex
	ANGULAR ± 1 ° DRAFT WHERE APPLICABLE MUST REMAIN WITHIN DIMENSIONS	DRAWN BY DATE KHEWITT 2016/09/26 CHECKED BY DATE APPROVED BY DATE RBAUMAN 2017/02/10	MATERIAL NO. SEE CHART	DOCUMENT NO. RSD-34897-004	SHEET NO. 5 OF 5	
	THIS DRAWING CONTAINS INFORMATION THAT IS PROPRIETARY TO MOLEX INCORPORATED AND SHOULD NOT BE USED WITHOUT WRITTEN PERMISSION					



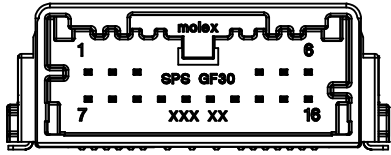
12 CIRCUIT SMT USCAR HEADER
POLARIZATION OPTION A



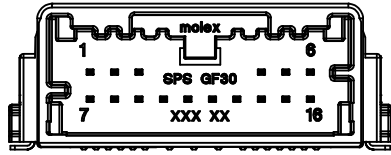
12 CIRCUIT SMT USCAR HEADER
POLARIZATION OPTION B



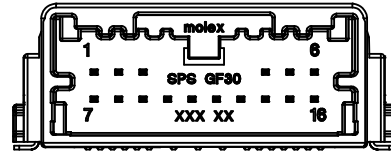
12 CIRCUIT SMT USCAR HEADER
POLARIZATION OPTION C



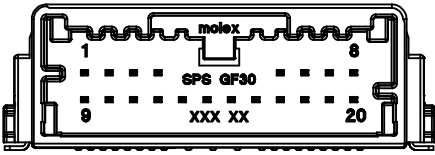
16 CIRCUIT SMT HEADER
POLARIZATION OPTION A



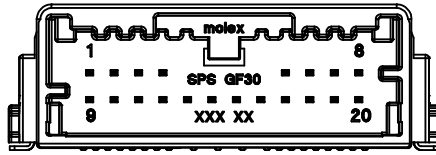
16 CIRCUIT SMT HEADER
POLARIZATION OPTION B



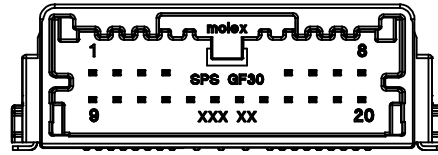
16 CIRCUIT SMT HEADER
POLARIZATION OPTION C



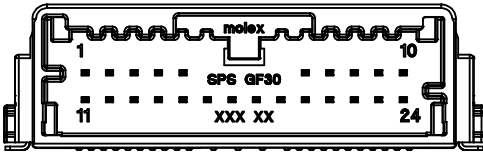
20 CIRCUIT SMT HEADER
POLARIZATION OPTION A



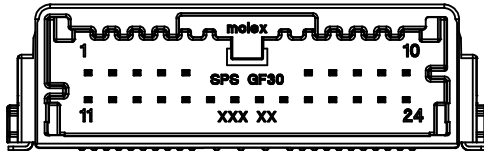
20 CIRCUIT SMT HEADER
POLARIZATION OPTION B



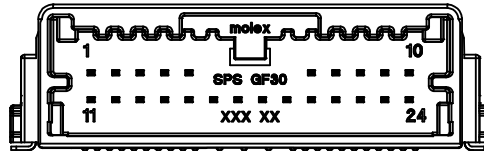
20 CIRCUIT SMT HEADER
POLARIZATION OPTION C



24 CIRCUIT SMT HEADER
POLARIZATION OPTION A



24 CIRCUIT SMT HEADER
POLARIZATION OPTION B



24 CIRCUIT SMT HEADER
POLARIZATION OPTION C

NOTES: VALID UNLESS OTHERWISE SPECIFIED

1. GENERAL:
 - a. APPLICATION SPECIFICATION SEE: AS-34791-020
 - b. PRODUCT SPECIFICATION SEE: PS-34791-020
 - c. PACKAGING SPECIFICATION PER MOLEX DRAWING: SEE CHART
 - d. SOLDERABILITY PER SMES-152
 - e. PARTS MUST BE IN COMPLIANCE TO MOLEX CHEMICAL SUBSTANCES FOR PRODUCTS AND PACKAGING SPECIFICATION: OEHs-699000-300
 - f. DATA MUST BE SUBMITTED UNDER THE MOLEX PART NUMBER TO IMDS (COMPANY ID#13255)
 - g. FLAMMABILITY REQUIREMENT: PER ISO3795 OR GM3191
 - h. VISUAL DEFECTS SHALL MEET COSMETIC STANDARD PS-45499-002 (Class B)

2. DESIGN - MATERIALS:
 - a. SHROUD (PLASTIC HOUSING): SPS 30% GF, 20% REGRIND MAX PER WEIGHT
 - b. BLADES:
 - BASE METAL: C260 BRASS
 - PLATING REQUIREMENTS:
 - TIN OVER NICKEL:
 - UNDERPLATING:
 - OVERALL NICKEL
 - OVERPLATING:
 - OVERALL TIN
 - GOLD:
 - UNDERPLATING:
 - OVERALL NICKEL
 - OVERPLATING:
 - CONTACT AREA: ELECTRODEPOSITED GOLD
 - 0.76 MICROMETERS MINIMUM HARD GOLD
 - PCB CONTACT AREA: ELECTRODEPOSITED TIN MATTE FINISH
 - 2.5 MICROMETERS MINIMUM THICKNESS

3. DESIGN - GEOMETRY:
 - a. THIS IS A 100% CAD GENERATED PART. THE CAD MATHEMATICAL DATA IS THE MASTER FOR THIS PART. FOR DIMENSIONAL OR ANY INFORMATION NOT SHOWN ON THIS DRAWING, ANALYZE THE CAD MODEL.
 - b. GEOMETRIC DIMENSIONS AND TOLERANCES PER ASME Y14.5M - 2009
 - c. GENERAL TOLERANCES: SEE TITLE BLOCK
 - d. EDGES AND UNDIMENSIONED DETAILS PER ISO13715
 - e. CORNERS SHOWN AS SHARP TO BE R 0.1 MAX
 - f. LETTERING SHALL BE 0.10 MAX RAISED. THIS INCLUDES RECYCLING CODE, PLANT AND CAVITY ID, VENDOR ID, AND CIRCUIT ID.

LAST BALLOON ON DRAWING:

14

DELETED BALLOONS:

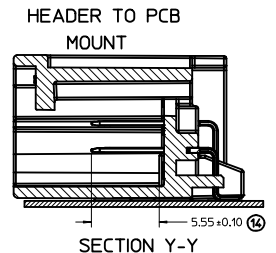
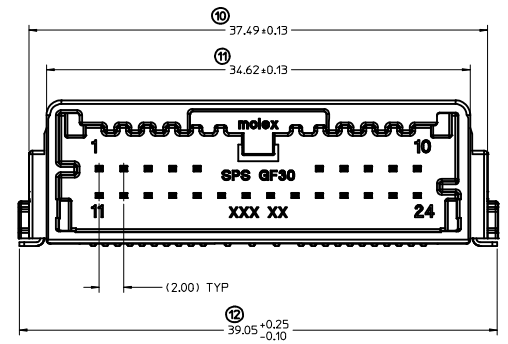
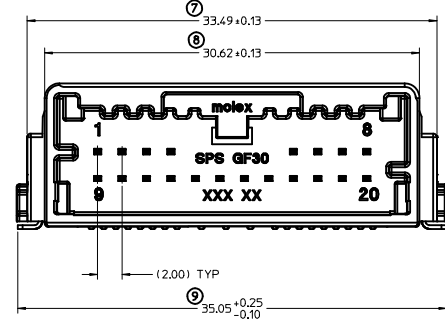
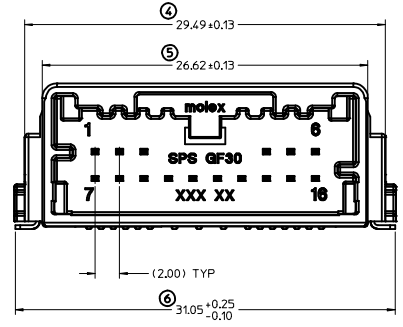
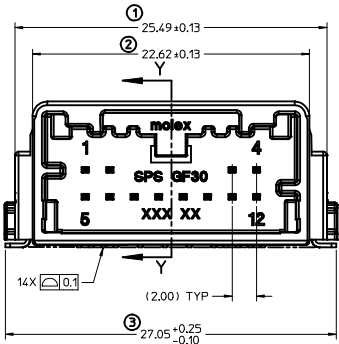
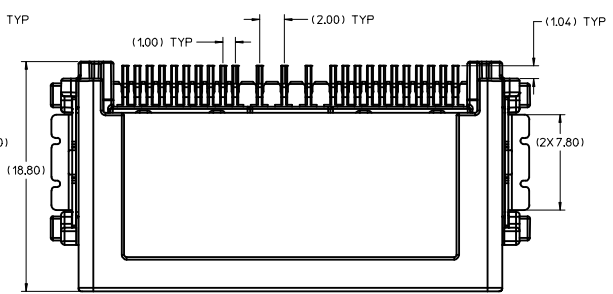
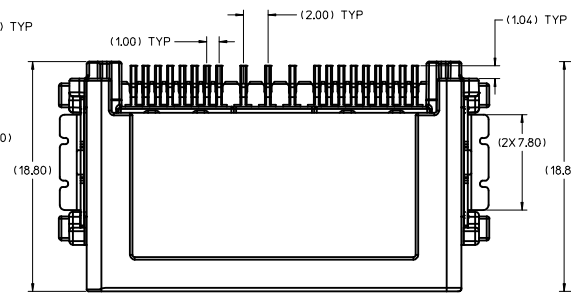
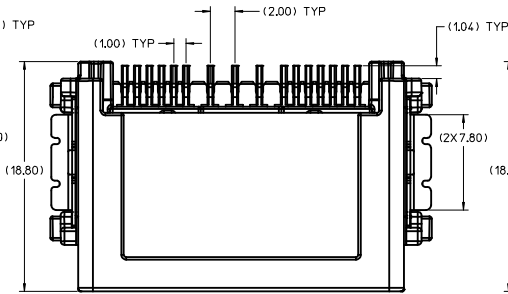
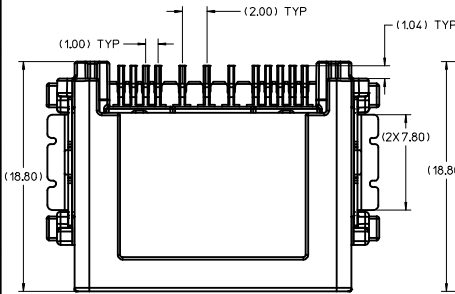
GOLD PLATING EC NO. UAU2017-0254 DRAWN BY: CHYK APPR: RBALMAN 2016/09/21 2016/09/26	QUALITY SYMBOLS ▽=0 ▽=0 ▽=0	GENERAL TOLERANCES (UNLESS SPECIFIED)		DIMENSION STYLE MM ONLY	SCALE 5:1	DESIGN UNITS METRIC	THIRD ANGLE PROJECTION
		4 PLACES ± mm ± INCH	3 PLACES ± --- ± ---	DRAWN BY: TMACHUGA DATE: 2011/11/23	CHECKED BY: DATE	TITLE MINI 50 DUAL ROW SMT HEADER ASSEMBLY SALES DRAWING	
		2 PLACES ± 0.10 ± ---	1 PLACE ± 0.20 ± ---	APPROVED BY: SMARCEAU DATE: 2011/12/19	MATERIAL NO.: SEE CHART	DOCUMENT NO.: MOLEX INCORPORATED	
		DRAFT WHERE APPLICABLE MUST REMAIN WITHIN DIMENSIONS		SIZE D	THIS DRAWING CONTAINS INFORMATION THAT IS PROPRIETARY TO MOLEX INCORPORATED AND SHOULD NOT BE USED WITHOUT WRITTEN PERMISSION	SHEET NO. 1 OF 5	

12 CKT SMT USCAR HEADER

16 CKT SMT HEADER

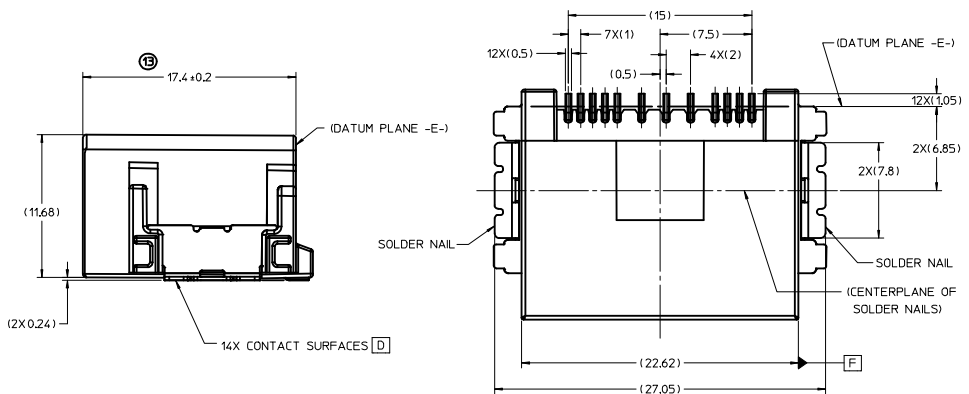
20 CKT SMT HEADER

24 CKT SMT HEADER

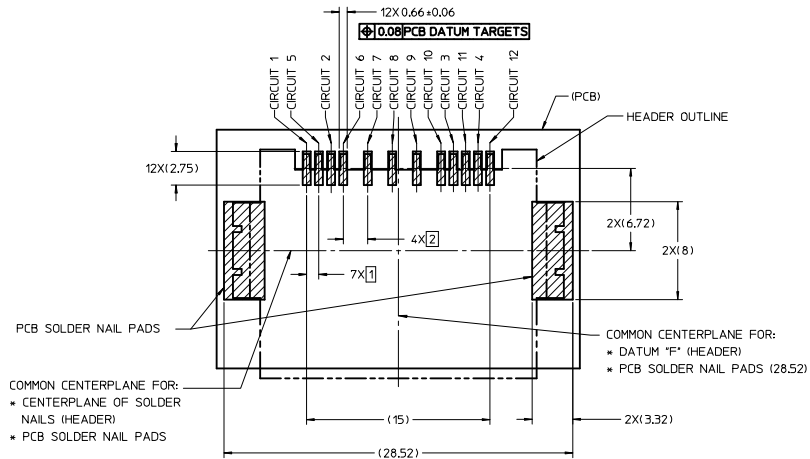


GOLD PLATING IEC NO. UAU2017-0254 DRAWN BY: DRINKHEWITT CHKD: CHYK APPR: BRAUMAN DATE: 2016/09/27	QUALITY SYMBOLS ∇=0 ∇=0 ∇=0	GENERAL TOLERANCES (UNLESS SPECIFIED)		DIMENSION STYLE MM ONLY	SCALE 5:1	DESIGN UNITS METRIC	THIRD ANGLE PROJECTION		
		4 PLACES ± --- ± --- 3 PLACES ± --- ± --- 2 PLACES ± 0.10 ± --- 1 PLACE ± 0.20 ± ---	mm INCH	DRAWN BY TMACHUGA	DATE 2011/11/23	TITLE MINI 50 DUAL ROW SMT HEADER ASSEMBLY SALES DRAWING			
		DRAFT WHERE APPLICABLE MUST REMAIN WITHIN DIMENSIONS		APPROVED BY SMARCEAU	DATE 2011/12/19	MOLEX INCORPORATED			
				MATERIAL NO. SEE CHART	DOCUMENT NO. SD-34897-001	SHEET NO. 2 OF 5			

RECOMMENDED PCB LAYOUT:



12 CKT SMT USCAR HEADER (BOTTOM VIEW)

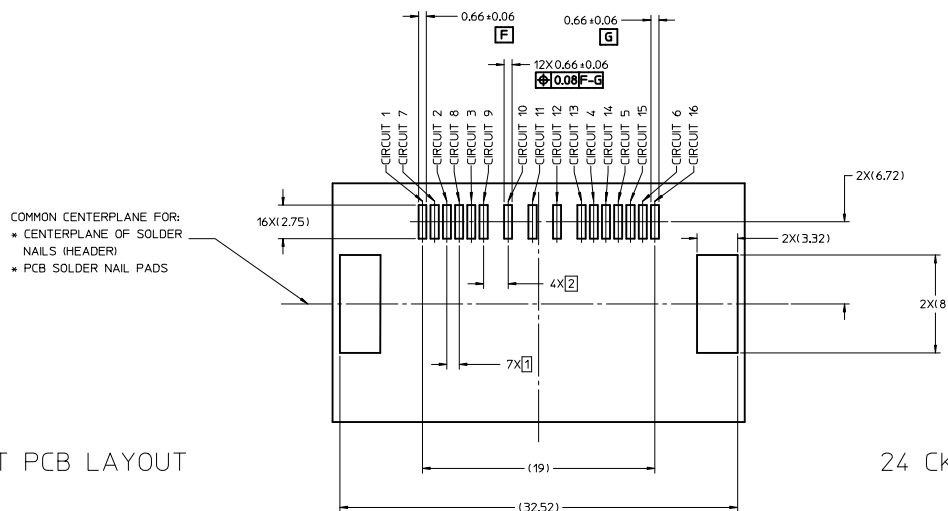


12 CKT PCB LAYOUT
(OTHER CIRCUIT SIZES ARE SIMILAR)

GOLD PLATING IEC NO. UAU2017-0254 DRAWN BY: CHYK APPR: RBALMAN DATE: 2016/09/27	QUALITY SYMBOLS	GENERAL TOLERANCES (UNLESS SPECIFIED)	DIMENSION STYLE	SCALE	DESIGN UNITS	THIRD ANGLE PROJECTION
	▽=0	mm INCH	MM ONLY	10:1	METRIC	☉
	▽=0	4 PLACES ± --- ± ---	DRAWN BY DATE	TITLE		
	▽=0	3 PLACES ± --- ± ---	TMACHUGA 2011/11/23	MINI 50 DUAL ROW SMT HEADER ASSEMBLY SALES DRAWING		
▽=0	2 PLACES ± 0.10 ± ---	CHECKED BY DATE	molex			
▽=0	1 PLACE ± 0.20 ± ---	APPROVED BY DATE	SD-34897-001			
▽=0	0 PLACE ± ±	SMARCEAU 2011/12/19	3 OF 5			
ANGULAR ± 1 °	DRAFT WHERE APPLICABLE MUST REMAIN WITHIN DIMENSIONS	MATERIAL NO.	SEE CHART			
SIZE D		DOCUMENT NO.	SD-34897-001			
		SHEET NO.	3 OF 5			

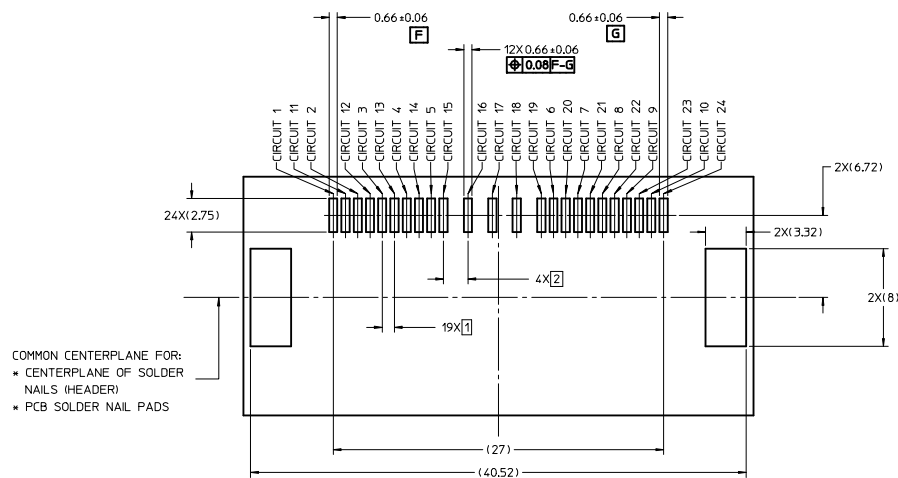
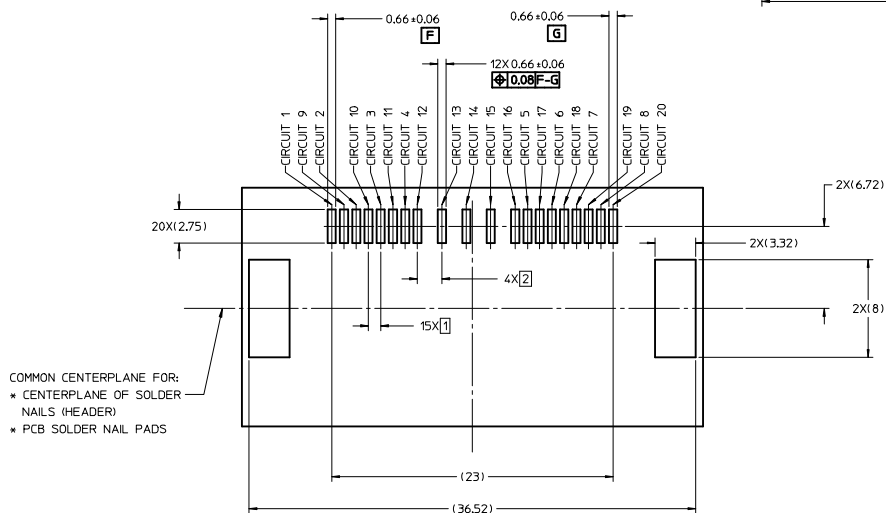
16 CKT PCB LAYOUT

RECOMMENDED PCB LAYOUT:



20 CKT PCB LAYOUT

24 CKT PCB LAYOUT



GOLD PLATING EC NO. UAU2017-0254 DRAWN BY: DRANKHEWITT CHKD: APPR: RBALMAN 2016/09/21 2016/09/26	QUALITY SYMBOLS	GENERAL TOLERANCES (UNLESS SPECIFIED)	DIMENSION STYLE	SCALE	DESIGN UNITS	THIRD ANGLE PROJECTION
	▽=0	mm INCH	MM ONLY	5:1	METRIC	☉
	▽=0	4 PLACES ± --- ± ---	DRAWN BY: TMACHUGA	DATE: 2011/11/23	TITLE:	MINI 50 DUAL ROW SMT HEADER ASSEMBLY SALES DRAWING
	▽=0	3 PLACES ± --- ± ---	CHECKED BY:	DATE:		
	2 PLACES ± 0.10 ± ---	APPROVED BY: SMARCEAU	DATE: 2011/12/19	MATERIAL NO.:	DOCUMENT NO.:	SHEET NO.:
	1 PLACE ± 0.20 ± ---	DRAFT WHERE APPLICABLE MUST REMAIN WITHIN DIMENSIONS		SEE CHART	SD-34897-001	4 OF 5
	0 PLACE ± ±	THIS DRAWING CONTAINS INFORMATION THAT IS PROPRIETARY TO MOLEX INCORPORATED AND SHOULD NOT BE USED WITHOUT WRITTEN PERMISSION				

MINI50 SMT DUAL ROW HEADER ASSEMBLIES

MATERIAL NUMBER TUBE PACKAGING PK-31301-688	MATERIAL NUMBER TAPE AND REEL PACKAGING PK-31301-786	CONFIGURATION	CIRCUIT	POL	COLOR	BLADE PLATING	MATING COMPONENT	
							UN-BRIDGED	BRIDGED
34897-5120	34897-6120	USCAR	12	A	BLACK	GOLD	34824-0124	34824-1124
34897-5121	34897-6121	USCAR	12	B	GRAY	GOLD	34824-0125	34824-1125
34897-5122	34897-6122	USCAR	12	C	DARK GRAY	GOLD	34824-0126	34824-1126
34897-5160	34897-6160	USCAR	16	A	BLACK	GOLD	34824-0160	34824-1160
34897-5161	34897-6161	USCAR	16	B	GRAY	GOLD	34824-0161	34824-1161
34897-5162	34897-6162	USCAR	16	C	DARK GRAY	GOLD	34824-0162	34824-1162
34897-5200	34897-6200	USCAR	20	A	BLACK	GOLD	34824-0200	34824-1200
34897-5201	34897-6201	USCAR	20	B	GRAY	GOLD	34824-0201	34824-1201
34897-5202	34897-6202	USCAR	20	C	DARK GRAY	GOLD	34824-0202	34824-1202
34897-5240	34897-6240	USCAR	24	A	BLACK	GOLD	34824-0240	34824-1240
34897-5241	34897-6241	USCAR	24	B	GRAY	GOLD	34824-0241	34824-1241
34897-5242	34897-6242	USCAR	24	C	DARK GRAY	GOLD	34824-0242	34824-1242

MATERIAL NUMBER TUBE PACKAGING PK-31301-688	MATERIAL NUMBER TAPE AND REEL PACKAGING PK-31301-786	CONFIGURATION	CIRCUIT	POL	COLOR	BLADE PLATING	MATING COMPONENT	
							UN-BRIDGED	BRIDGED
34897-9120	34897-8120	USCAR	12	A	BLACK	TIN OVER NICKEL	34824-0124	34824-1124
34897-9121	34897-8121	USCAR	12	B	GRAY	TIN OVER NICKEL	34824-0125	34824-1125
34897-9122	34897-8122	USCAR	12	C	DARK GRAY	TIN OVER NICKEL	34824-0126	34824-1126
34897-9160	34897-8160	USCAR	16	A	BLACK	TIN OVER NICKEL	34824-0160	34824-1160
34897-9161	34897-8161	USCAR	16	B	GRAY	TIN OVER NICKEL	34824-0161	34824-1161
34897-9162	34897-8162	USCAR	16	C	DARK GRAY	TIN OVER NICKEL	34824-0162	34824-1162
34897-9200	34897-8200	USCAR	20	A	BLACK	TIN OVER NICKEL	34824-0200	34824-1200
34897-9201	34897-8201	USCAR	20	B	GRAY	TIN OVER NICKEL	34824-0201	34824-1201
34897-9202	34897-8202	USCAR	20	C	DARK GRAY	TIN OVER NICKEL	34824-0202	34824-1202
34897-9240	34897-8240	USCAR	24	A	BLACK	TIN OVER NICKEL	34824-0240	34824-1240
34897-9241	34897-8241	USCAR	24	B	GRAY	TIN OVER NICKEL	34824-0241	34824-1241
34897-9242	34897-8242	USCAR	24	C	DARK GRAY	TIN OVER NICKEL	34824-0242	34824-1242

GOLD PLATING EC NO. UAU2017-0254 DRAWN BY CHKD: APPR:RBALMAN 2016/09/21 2016/09/26	QUALITY SYMBOLS ∇=0 ∇=0 ∇=0	GENERAL TOLERANCES (UNLESS SPECIFIED)		DIMENSION STYLE MM ONLY	SCALE 10:1	DESIGN UNITS METRIC	THIRD ANGLE PROJECTION		
		4 PLACES ± 0.10 3 PLACES ± 0.15 2 PLACES ± 0.20 1 PLACE ± 0.30 0 PLACE ± 0.40	mm INCH	DRAWN BY TMACHUGA	DATE 2011/11/23	TITLE MINI 50 DUAL ROW SMT HEADER ASSEMBLY SALES DRAWING			
		ANGULAR ± 1 ° DRAFT WHERE APPLICABLE MUST REMAIN WITHIN DIMENSIONS	MATERIAL NO. SEE CHART	APPROVED BY SMARCEAU	DATE 2011/12/19	DOCUMENT NO. SD-34897-001			
		SIZE D	THIS DRAWING CONTAINS INFORMATION THAT IS PROPRIETARY TO MOLEX INCORPORATED AND SHOULD NOT BE USED WITHOUT WRITTEN PERMISSION						