



Chipsmall Limited consists of a professional team with an average of over 10 year of expertise in the distribution of electronic components. Based in Hongkong, we have already established firm and mutual-benefit business relationships with customers from,Europe,America and south Asia,supplying obsolete and hard-to-find components to meet their specific needs.

With the principle of "Quality Parts,Customers Priority,Honest Operation,and Considerate Service",our business mainly focus on the distribution of electronic components. Line cards we deal with include Microchip,ALPS,ROHM,Xilinx,Pulse,ON,Everlight and Freescale. Main products comprise IC,Modules,Potentiometer,IC Socket,Relay,Connector.Our parts cover such applications as commercial,industrial, and automotives areas.

We are looking forward to setting up business relationship with you and hope to provide you with the best service and solution. Let us make a better world for our industry!



## Contact us

Tel: +86-755-8981 8866 Fax: +86-755-8427 6832

Email & Skype: info@chipsmall.com Web: www.chipsmall.com

Address: A1208, Overseas Decoration Building, #122 Zhenhua RD., Futian, Shenzhen, China



## 2-BAY MINI50 RIGHT ANGLE HEADER ASSEMBLY (P/N 34960-0200 SHOWN)

NOTES: VALID UNLESS OTHERWISE SPECIFIED

1. GENERAL:

a. CONNECTOR HEADER MUST BE VALIDATED TO THE FOLLOWING FUNCTIONAL REQUIREMENTS:

PRODUCT SPECIFICATION: PS-34959-001

b. APPLICATION REQUIREMENTS (REFERENCE ONLY):

APPLICATION SPECIFICATION: AS-34959-001

c. PACKAGING SPECIFICATION PER MOLEX DRAWING PK-31302-070 (TRAY)

d. PACKAGING SPECIFICATION PER MOLEX DRAWING PK-31301-688 (TUBE)

2. DESIGN: MATERIALS:

a. SHROUD (PLASTIC HOUSING):

RESIN - SPS 30%GF

COLOR:

POL A - BLACK

POL B - GRAY

POL C - DARK GREY

b. PIN ALIGNMENT PLATE:

RESIN - SPS 30%GF

COLOR: BLACK

c. 0.50mm BLADES:

BASE MATERIAL: C26800

PLATING TYPE: AS NOTED

d. 1.20mm BLADES:

BASE MATERIAL: C26800

PLATING TYPE: AS NOTED

3. PLATING REQUIREMENTS:

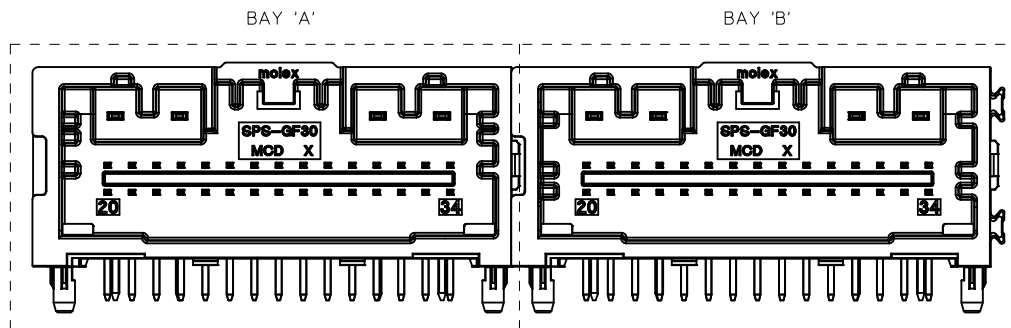
a. UNDERPLATING - OVERALL NICKEL

b. OVERPLATING - OVERALL REFLOW TIN

4. FOR DESCRIPTION OF INDIVIDUAL BAYS, REFER TO THE FOLLOWING

SINGLE BAY DRAWINGS:

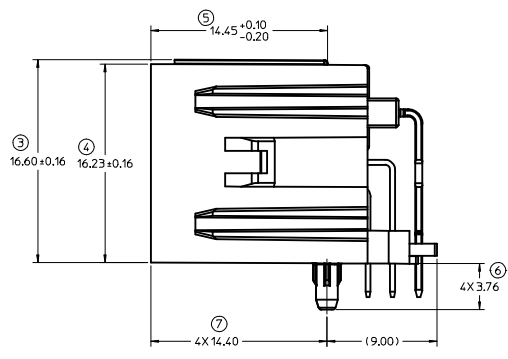
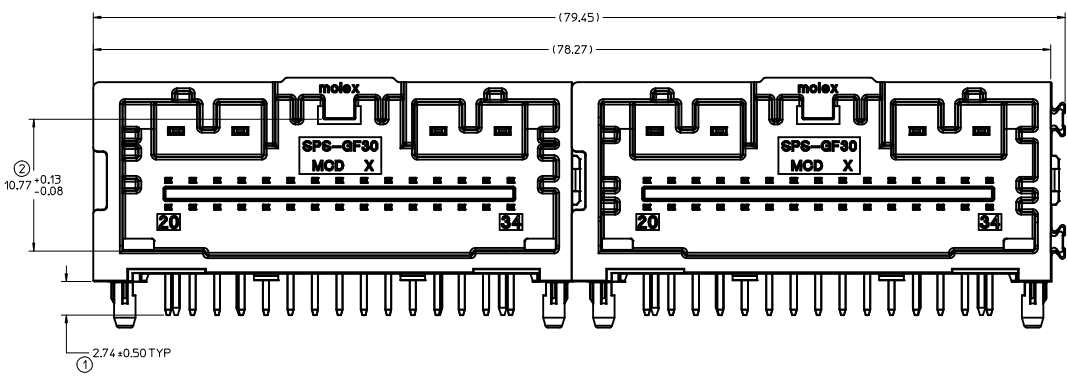
SD-34961-030



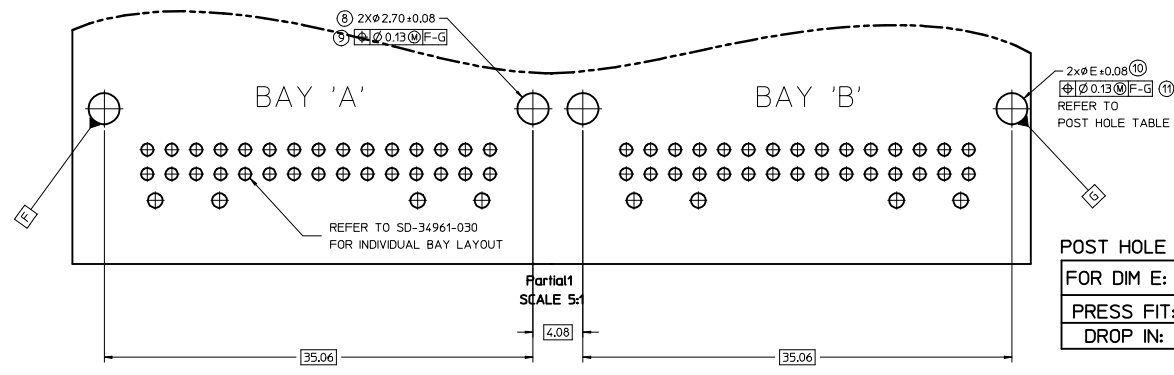
DIMENSIONAL CHART FOR MULTIBAY CONFIGURATION:

2 BAY PART NUMBER (TUBE PKG)	2 BAY PART NUMBER (TRAY PKG)	BAY A			BAY B		
		CKT	TYPE	POL	CKT	TYPE	POL
TBD	34960-0200	34	HYBRID	A	34	HYBRID	B
TBD	34960-0210	38	0.50mm	A	38	0.50mm	B
TBD	34960-0220	34	HYBRID	A	38	0.50mm	B
TBD	34960-0230	38	0.50mm	A	34	HYBRID	B
TBD	34960-0240	38	0.50mm	B	38	0.50mm	A

ENTER DESCRIPTION IEC NO: UAU2017-0815 DRAWN: J FISCHER01 2017/03/14 CHKD: APPR: RBAUMAN 2017/03/21 REV:	QUALITY SYMBOLS	GENERAL TOLERANCES (UNLESS SPECIFIED)	DIMENSION STYLE	SCALE	DESIGN UNITS	THIRD ANGLE PROJECTION
	▽=0	mm INCH	MM ONLY	5:1	METRIC	☉
	▽=0	4 PLACES ± --- ± ---	DRAWN BY DATE	TITLE 34 & 38 CKT MINI50 2-BAY R/A HEADER ASSEMBLY SALES DRAWING <b>molex</b>		
	▽=0	3 PLACES ± --- ± ---	J FISCHER01 2014/03/25			
	2 PLACES ± --- ± ---	CHECKED BY DATE	MATERIAL NO. DOCUMENT NO. SHEET NO. SEE CHART SD-34960-0200 1 OF 2			
	1 PLACE ± --- ± ---	APPROVED BY DATE	THIS DRAWING CONTAINS INFORMATION THAT IS PROPRIETARY TO MOLEX INCORPORATED AND SHOULD NOT BE USED WITHOUT WRITTEN PERMISSION			
	0 PLACE ± --- ± ---	RBAUMAN 2014/03/31				

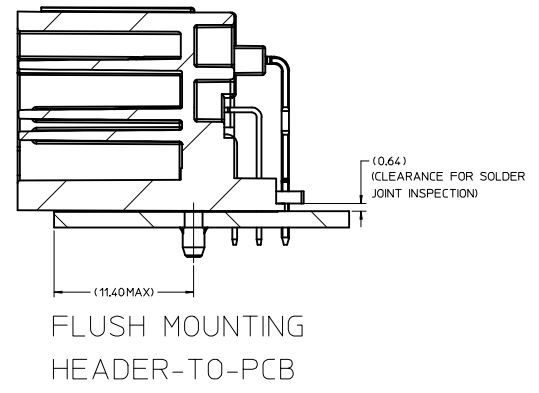


RECOMMENDED PCB LAYOUT



POST HOLE TABLE:  
FOR DIM E:

PRESS FIT:	2.30
DROP IN:	2.65



DIN 16901	CODE LETTER	NOMINAL DIMENSION RANGE												
		OVER	0	1	3	6	10	15	22	30	40	53	70	90
PRECISION ENGINEERING	A	+0.10	+0.12	+0.14	+0.16	+0.20	+0.22	+0.24	+0.26	+0.28	+0.31	+0.35	+0.40	+0.50
	B	+0.05	+0.06	+0.07	+0.08	+0.10	+0.12	+0.14	+0.16	+0.18	+0.21	+0.25	+0.30	+0.40

A: FOR NON-MOLD RELATED DIMENSIONS (ACROSS PARTING LINE)  
B: FOR MOLD RELATED DIMENSIONS (WITHIN MOLD COMPONENTS)

<b>ENTER DESCRIPTION</b> IEC NO. UAU2017-0815 DRAWN BY JFISCHER01 2017/03/14 CHKD: RBAUMAN APPR: RBAUMAN 2017/03/21 REV: A7	QUALITY SYMBOLS ∇=0 ∇=0 ∇=0	GENERAL TOLERANCES (UNLESS SPECIFIED) mm INCH 4 PLACES # --- ± --- 3 PLACES # --- ± --- 2 PLACES # --- ± --- 1 PLACE # --- ± --- 0 PLACE # --- ± ---	DIMENSION STYLE MM ONLY DRAWN BY DATE JFISCHER01 2014/03/25 CHECKED BY DATE APPROVED BY DATE RBAUMAN 2014/03/31	SCALE 5:1 DESIGN UNITS METRIC THIRD ANGLE PROJECTION	TITLE 34 & 38 CKT MINISO 2-BAY R/A HEADER ASSEMBLY SALES DRAWING molex	MATERIAL NO. SEE CHART DOCUMENT NO. SD-34960-0200	SHEET NO. 2 OF 2
	THIS DRAWING CONTAINS INFORMATION THAT IS PROPRIETARY TO MOLEX INCORPORATED AND SHOULD NOT BE USED WITHOUT WRITTEN PERMISSION						