



Chipsmall Limited consists of a professional team with an average of over 10 year of expertise in the distribution of electronic components. Based in Hongkong, we have already established firm and mutual-benefit business relationships with customers from,Europe,America and south Asia,supplying obsolete and hard-to-find components to meet their specific needs.

With the principle of “Quality Parts,Customers Priority,Honest Operation,and Considerate Service”,our business mainly focus on the distribution of electronic components. Line cards we deal with include Microchip,ALPS,ROHM,Xilinx,Pulse,ON,Everlight and Freescale. Main products comprise IC,Modules,Potentiometer,IC Socket,Relay,Connector.Our parts cover such applications as commercial,industrial, and automotives areas.

We are looking forward to setting up business relationship with you and hope to provide you with the best service and solution. Let us make a better world for our industry!



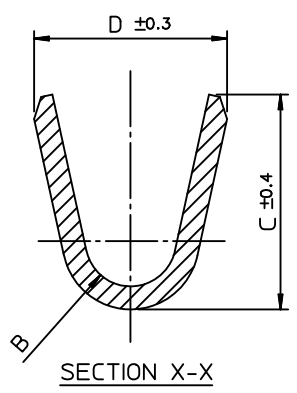
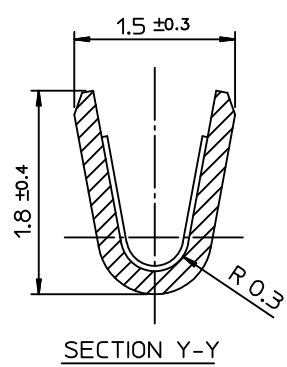
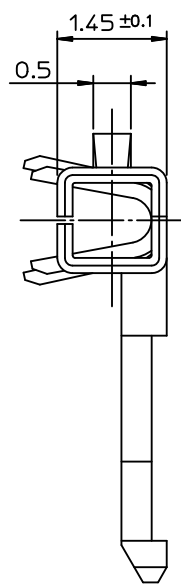
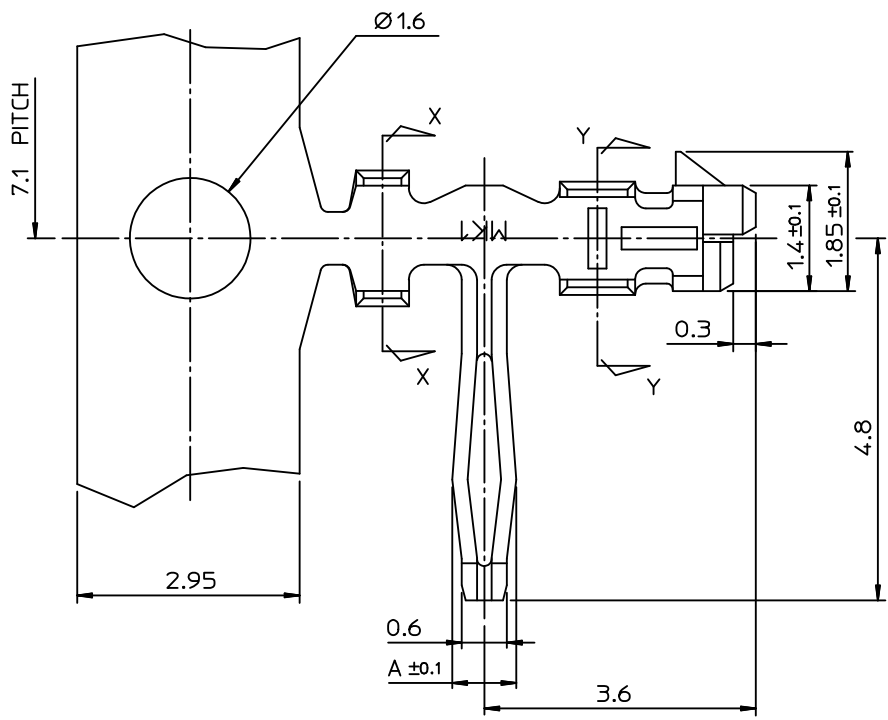
## Contact us

Tel: +86-755-8981 8866 Fax: +86-755-8427 6832

Email & Skype: info@chipsmall.com Web: www.chipsmall.com

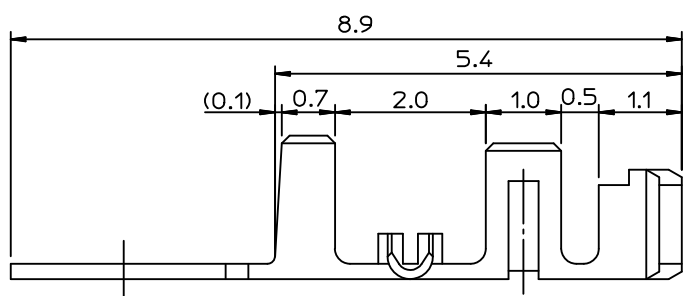
Address: A1208, Overseas Decoration Building, #122 Zhenhua RD., Futian, Shenzhen, China





NOTE

1. MATERIAL
  - 1) BRASS (CDA 260)
  - 2) PHOSPHOR BRONZE (CDA 510)
2. PLATING
  - 1) PRE PLATED - TIN OVER COPPER
  - 2) POST PLATED - TIN/LEAD OVER COPPER
3. USED HOUSING : 35022-00\*\*/35023-00\*\*/68418-\*\*00
- ④ 4. CAMBER : 30/1,000 MAX.



POST-PLATED	PHOS. BRON.	AWG #24-#30	1.8	1.9	R0.4	0.85	350211310	35021-1310
PRE-PLATED	PHOS. BRON.	(INS. DIA: $\varnothing$ 1.5 MAX.)	2.5	2.5	R0.7	1.05	350211301	35021-1301
	BRASS						350211201	35021-1201
PRE-PLATED	PHOS. BRON.	AWG #22-#28 ①	2.5	2.5	R0.7	1.05	350211101	35021-1101
	BRASS	(INS. DIA: $\varnothing$ 1.9 MAX.)					350211001	35021-1001
POST-PLATED	PHOS. BRON.						350211110	35021-1110
PLATING	MATERIAL	WIRE RANGE	D	C	B	A	MAT'L NO.	ENG NO.

REVISED  
 EC NO: KOR2011-0132  
 DRWNSUNGHYUK JOO 2011/05/24  
 CHKD: YSOOK IM 2011/05/24  
 APPR: YUNSIKK IM 2011/06/03

QUALITY SYMBOLS

GENERAL TOLERANCES (UNLESS SPECIFIED)

	mm	INCH
4 PLACES	± ---	± ---
3 PLACES	± ---	± ---
2 PLACES	± ---	± ---
1 PLACE	± 0.3	± ---
ANGULAR ± 1 °		

DRAFT WHERE APPLICABLE MUST REMAIN WITHIN DIMENSIONS

DIMENSION STYLE  
**MM ONLY**

SCALE  
**15:1**

DESIGN UNITS  
**METRIC**

THIRD ANGLE PROJECTION

DRAWN BY  
 HSSHIN

CHECKED BY  
 JKOH

APPROVED BY

MATERIAL NO.  
**SEE TABLE**

SIZE  
**A3**

TITLE  
**R/A B-IN TERMINAL**

MOLEX INCORPORATED

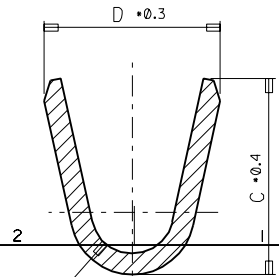
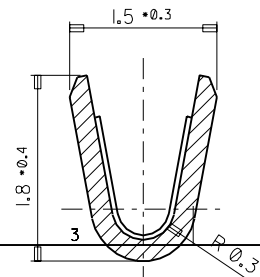
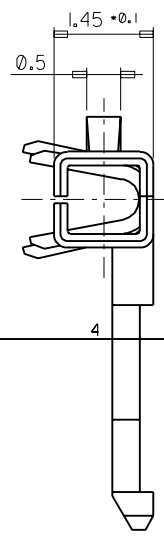
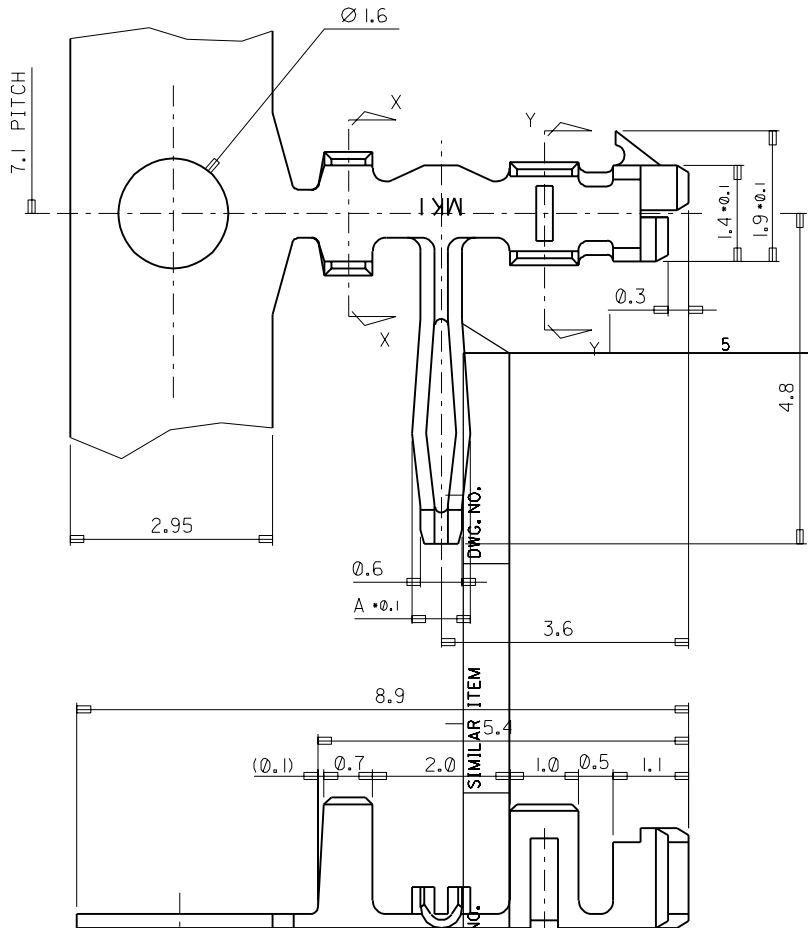
DOCUMENT NO.  
**SD-35021-001**

SHEET NO.  
**1 OF 1**

THIS DRAWING CONTAINS INFORMATION THAT IS PROPRIETARY TO MOLEX INCORPORATED AND SHOULD NOT BE USED WITHOUT WRITTEN PERMISSION

DO NOT SCALE DRAWING  
DIMENSION IN METRIC

PROJECT NO. 35021-I-1\*\*\*  
SIMILAR ITEM 35021-I-1\*\*\*  
DWG. NO. SD 35021-I-1\*\*\*



- NOTE
- MATERIAL
    - BRASS (CDA 260)
    - PHOSPHOR BRONZE (CDA 510)
  - PLATING
    - PRE PLATED - TIN OVER COPPER
    - POST PLATED - TIN/LEAD OVER COPPER
  - USED HOUSING : 35022-00\*\* / 35023-00\*\*

POST-PLATED	PHOS. BRON.	AWG #24-#30	1.8	1.9	R0.4	0.85	35021-1310
PRE-PLATED	PHOS. BRON.	(INS. DIA: Ø 1.5 MAX.)	2.5	2.5	R0.7	1.05	35021-1301
	BRASS						35021-1201
PRE-PLATED	PHOS. BRON.	AWG #22-#30	2.5	2.5	R0.7	1.05	35021-1101
	BRASS	(INS. DIA: Ø 1.9 MAX.)					35021-1001
POST-PLATED	PHOS. BRON.						35021-1110
PLATING	MATERIAL	WIRE RANGE	D	C	B	A	ENG NO.

REVISED EC NO. KOR1998-0091 DRWN: HSSHIN(980609) CHK: JKOH APPR: CWLEE	QUALITY SYMBOLS MAJOR CRITICAL	GENERAL TOLERANCES: (UNLESS SPECIFIED)		SCALE 15-1	DESIGN UNITS <input checked="" type="checkbox"/> mm <input type="checkbox"/> INCH	THIRD ANGLE PROJECTION	DIMENSIONS: <input type="checkbox"/> mm <input type="checkbox"/> INCH <input checked="" type="checkbox"/> mm ONLY	SHT	REV
		4 PLACES ±0.	3 PLACES ±.	2 PLACES ±.	1 PLACE ±.3	ANGULAR ± 1 °	DRAWN BY & DATE HSSHIN		CHECKED BY & DATE JKOH
REV	DESCRIPTION	REVISIONS		APPROVED BY & DATE CWLEE		TITLE: R/A B-IN TERMINAL		MATERIAL NO. 350-21-1***	
DRAWN WHERE APPLICABLE MUST REMAIN WITHIN DIMENSIONS		CAD FILENAME SD35021.DGN		DRAWING NO. SD 35021-I-1***		SHEET NO. 10F1		SIZE B	



THIS DRAWING CONTAINS INFORMATION THAT IS PROPRIETARY TO MOLEX INCORPORATED AND SHOULD NOT BE USED WITHOUT WRITTEN PERMISSION.