



Chipsmall Limited consists of a professional team with an average of over 10 year of expertise in the distribution of electronic components. Based in Hongkong, we have already established firm and mutual-benefit business relationships with customers from,Europe,America and south Asia,supplying obsolete and hard-to-find components to meet their specific needs.

With the principle of “Quality Parts,Customers Priority,Honest Operation,and Considerate Service”,our business mainly focus on the distribution of electronic components. Line cards we deal with include Microchip,ALPS,ROHM,Xilinx,Pulse,ON,Everlight and Freescale. Main products comprise IC,Modules,Potentiometer,IC Socket,Relay,Connector.Our parts cover such applications as commercial,industrial, and automotives areas.

We are looking forward to setting up business relationship with you and hope to provide you with the best service and solution. Let us make a better world for our industry!



Contact us

Tel: +86-755-8981 8866 Fax: +86-755-8427 6832

Email & Skype: info@chipsmall.com Web: www.chipsmall.com

Address: A1208, Overseas Decoration Building, #122 Zhenhua RD., Futian, Shenzhen, China



NOTES

1. MATERIAL: PVC
2. APPLICABLE TERMINALS: .250 SLIP-ON RECEPTACLE TERMINALS

35025-28*0

0 : WHITE COLOR, 60°C, 600V
 4 : BLUE COLOR, 105°C, 600V

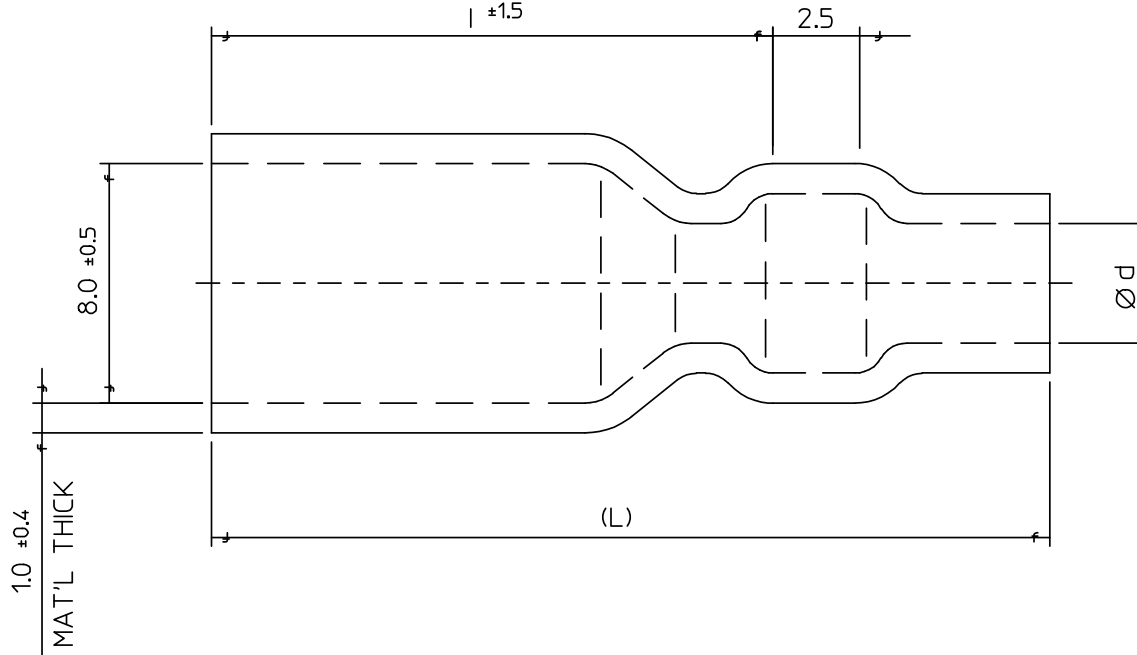
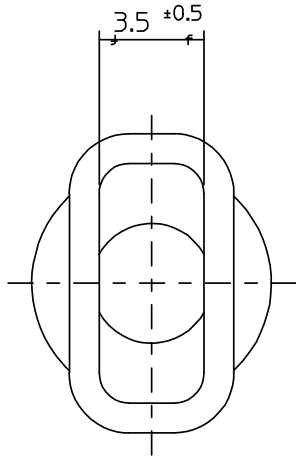


TABLE	ENG.NO.	DIMENSION		
		Ød	l	L
	35025-28*0	Ø 2.8	16.75	24.5
	35025-35*0	Ø 3.5	17.75	25.5
	35025-40*0	Ø 4.0		
	35025-45*0	Ø 4.5		
	35025-48*0	Ø 4.8		

NEW RELEASE EC NO: KOR2008-0194 DRWN: JHPARK01 2008/06/03 CHKD: WY. YANG 2008/06/03 APPR: YUNS IKKIM 2008/06/04	QUALITY SYMBOLS	GENERAL TOLERANCES (UNLESS SPECIFIED)	DIMENSION STYLE	SCALE	DESIGN UNITS	THIRD ANGLE PROJECTION
	▽=0	mm INCH	MM ONLY	5:1	METRIC	
	▽C=0	4 PLACES ± --- ± ---	DRAWN BY DATE	WY. YANG 1996/01/16	TITLE	
		3 PLACES ± --- ± ---	CHECKED BY DATE		INSULATION SLEEVE FOR 250 SLIP-ON RECEPTACLE	

APPROVED BY DATE	MATERIAL NO.	DOCUMENT NO.	SHEET NO.
	SEE TABLE	SD-35025-001	1 OF 01
DRAFT WHERE APPLICABLE MUST REMAIN WITHIN DIMENSIONS			

APPROVED BY DATE	MATERIAL NO.	DOCUMENT NO.	SHEET NO.
	SEE TABLE	SD-35025-001	1 OF 01

MATERIAL NO.		DOCUMENT NO.	SHEET NO.
SEE TABLE		SD-35025-001	1 OF 01
THIS DRAWING CONTAINS INFORMATION THAT IS PROPRIETARY TO MOLEX INCORPORATED AND SHOULD NOT BE USED WITHOUT WRITTEN PERMISSION			