



Chipsmall Limited consists of a professional team with an average of over 10 year of expertise in the distribution of electronic components. Based in Hongkong, we have already established firm and mutual-benefit business relationships with customers from,Europe,America and south Asia,supplying obsolete and hard-to-find components to meet their specific needs.

With the principle of "Quality Parts,Customers Priority,Honest Operation,and Considerate Service",our business mainly focus on the distribution of electronic components. Line cards we deal with include Microchip,ALPS,ROHM,Xilinx,Pulse,ON,Everlight and Freescale. Main products comprise IC,Modules,Potentiometer,IC Socket,Relay,Connector.Our parts cover such applications as commercial,industrial, and automotives areas.

We are looking forward to setting up business relationship with you and hope to provide you with the best service and solution. Let us make a better world for our industry!



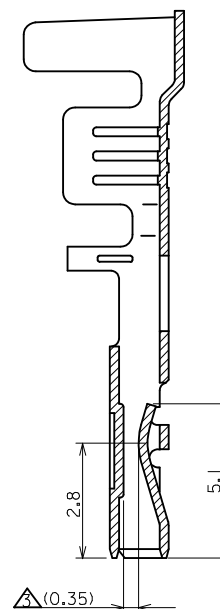
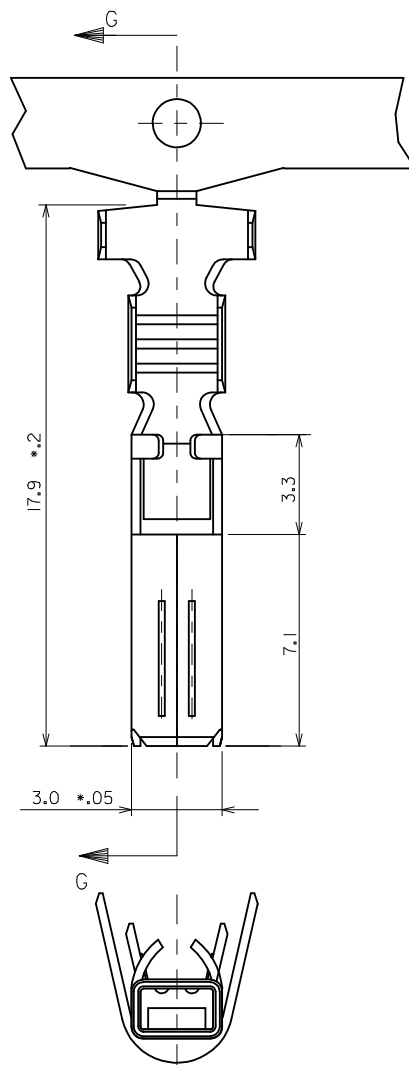
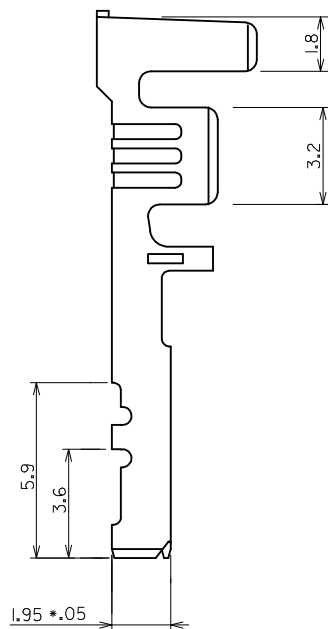
Contact us

Tel: +86-755-8981 8866 Fax: +86-755-8427 6832

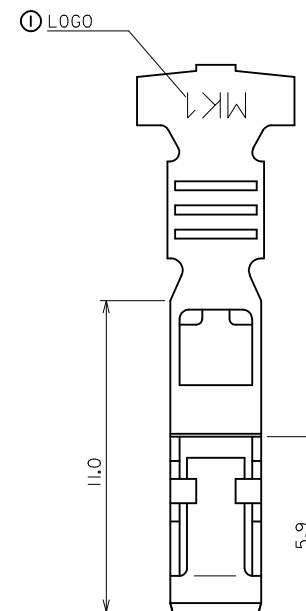
Email & Skype: info@chipsmall.com Web: www.chipsmall.com

Address: A1208, Overseas Decoration Building, #122 Zhenhua RD., Futian, Shenzhen, China





SECTION G-G



NOTES

1. MATERIAL: PHOSPHOR BRONZE
THICKNESS : 0.30 ±0.02
WIDTH : 22.8 ±0.08
2. PLATING: PREPLATING (REFLOW TREATMENT)
3. MALE TAB(THICK 0.6 ±0.05)FIT.
-INSERTION FORCE: 0.8Kgf. MAX.
-RETENTION FORCE: 0.3Kgf. MIN.
4. WIRE SIZE : AWG #20 × 2 35028-9502
AWG #18±#22 35028-9010
AWG #14±#20 35028-1111

REV	DESCRIPTION
REVISED	EC NO: KOR2013-0059
	DRWN:HYOU 2013/01/04
	CHKD:SHCHU
	APPR:YSKIM02 2013/01/04

QUALITY SYMBOLS
▽=0
▽=0

GENERAL TOLERANCES (UNLESS SPECIFIED)		
	mm	INCH
4 PLACES	± ---	± ---
3 PLACES	± ---	± ---
2 PLACES	± 0.15	± ---
1 PLACE	± 0.15	± ---
0 PLACE	± ---	± ---
ANGULAR ± .5 °		
DRAFT WHERE APPLICABLE MUST REMAIN WITHIN DIMENSIONS		

DIMENSION STYLE	
MM ONLY	
DRAWN BY	DATE
H. J. KIM	1994/06/25
CHECKED BY	DATE
B. K. CHOI	1994/06/25
APPROVED BY	DATE
YSKIM02	2013/01/04
MATERIAL NO.	
SEE TABLE	
SIZE	A3

SCALE	DESIGN UNITS	THIRD ANGLE PROJECTION
6/1	METRIC	
TITLE		
.070 FEMALE TERMINAL		
DOCUMENT NO.		
SD-35028-XXXX		
SHEET NO.		
1 OF 1		

molex