



Chipsmall Limited consists of a professional team with an average of over 10 year of expertise in the distribution of electronic components. Based in Hongkong, we have already established firm and mutual-benefit business relationships with customers from,Europe,America and south Asia,supplying obsolete and hard-to-find components to meet their specific needs.

With the principle of “Quality Parts,Customers Priority,Honest Operation,and Considerate Service”,our business mainly focus on the distribution of electronic components. Line cards we deal with include Microchip,ALPS,ROHM,Xilinx,Pulse,ON,Everlight and Freescale. Main products comprise IC,Modules,Potentiometer,IC Socket,Relay,Connector.Our parts cover such applications as commercial,industrial, and automotives areas.

We are looking forward to setting up business relationship with you and hope to provide you with the best service and solution. Let us make a better world for our industry!



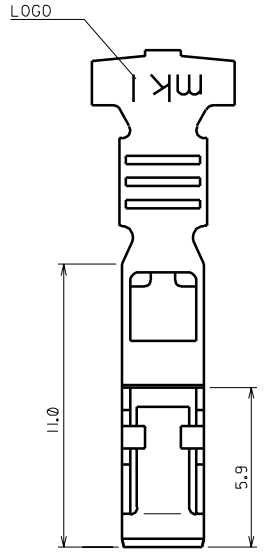
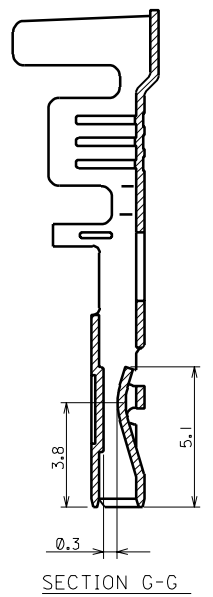
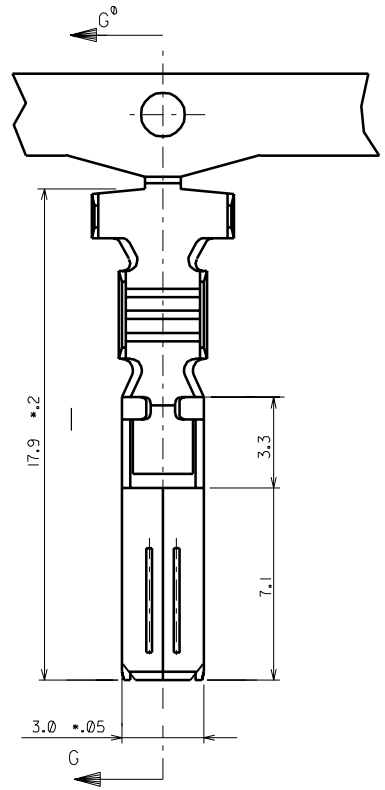
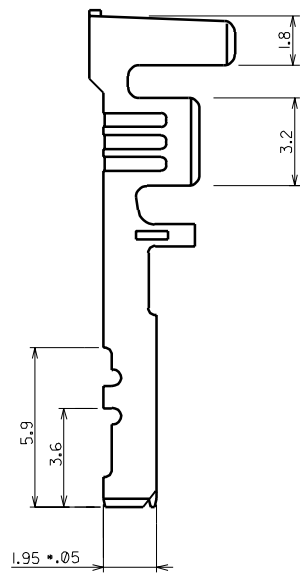
## Contact us

Tel: +86-755-8981 8866 Fax: +86-755-8427 6832

Email & Skype: [info@chipsmall.com](mailto:info@chipsmall.com) Web: [www.chipsmall.com](http://www.chipsmall.com)

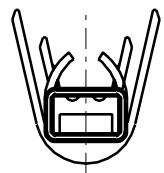
Address: A1208, Overseas Decoration Building, #122 Zhenhua RD., Futian, Shenzhen, China





NOTE

- 1. MATERIAL: PHOSPHOR BRONZE  
THICKNESS : 0.30 ± 0.02  
WIDTH : 23.4 ± 0.08
- 2. PLATING: PREPLATING (REFLOW TREATMENT)
- 3. WIRE SIZE : AWG #18±#20 35028-9902  
AWG #14±#20 35028-9802  
AWG #18±#22 35028-9010  
AWG #14±#20 35028-1112  
AWG #14±#20 35028-1111



F	REVISE		96/05/15	MATERIAL	SEE NOTES		MOLEX-KOREA CO.,LTD.	
E	REVISE		96/05/09					
D	REVISE		96/04/09	GENERAL TOLERANCE	DIMENSION : ± 0.15 ANGLE : ± 0.5°		DRAWN BY	CHK'D BY
C	REVISE	95-079	95/08/11				H.J.KIM	
B	REVISE	94-011	94/06/25	DIMENSION CLASSIFICATION	▽ : CRITICAL ▼ : MAJOR ( ) : REFERENCE		APP'D BY	SCALE
A	NEW RELEASE		91/12/26					5/1
LTR	REVISION RECORD	ECN	DATE	ASS'Y PART	DESCRIPTION		TITLE :	
REVISE ONLY ON CAD SYSTEM				ENG. NO.			.070 FEMALE TERMINAL	
							SHEET	
							10F1	
							REV	
							F	
							ENG. NO. SD35028-*****	