



Chipsmall Limited consists of a professional team with an average of over 10 year of expertise in the distribution of electronic components. Based in Hongkong, we have already established firm and mutual-benefit business relationships with customers from,Europe,America and south Asia,supplying obsolete and hard-to-find components to meet their specific needs.

With the principle of “Quality Parts,Customers Priority,Honest Operation,and Considerate Service”,our business mainly focus on the distribution of electronic components. Line cards we deal with include Microchip,ALPS,ROHM,Xilinx,Pulse,ON,Everlight and Freescale. Main products comprise IC,Modules,Potentiometer,IC Socket,Relay,Connector.Our parts cover such applications as commercial,industrial, and automotives areas.

We are looking forward to setting up business relationship with you and hope to provide you with the best service and solution. Let us make a better world for our industry!



Contact us

Tel: +86-755-8981 8866 Fax: +86-755-8427 6832

Email & Skype: info@chipsmall.com Web: www.chipsmall.com

Address: A1208, Overseas Decoration Building, #122 Zhenhua RD., Futian, Shenzhen, China



DWG. 10.
SD-35047-001

SIMILAR ITEM

PROJECT NO.

C

B

DO NOT SCALE DRAWING
DIMENSION IN METRIC

LEAD FREE

Ⓗ
NOTE

1. MATERIAL : BRASS

2. FINISHES

1) PRE-PLATING:TIN(Sn) 0.9μM MIN OVER Cu 0.5 μM MIN.

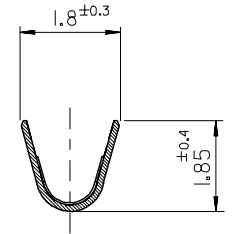
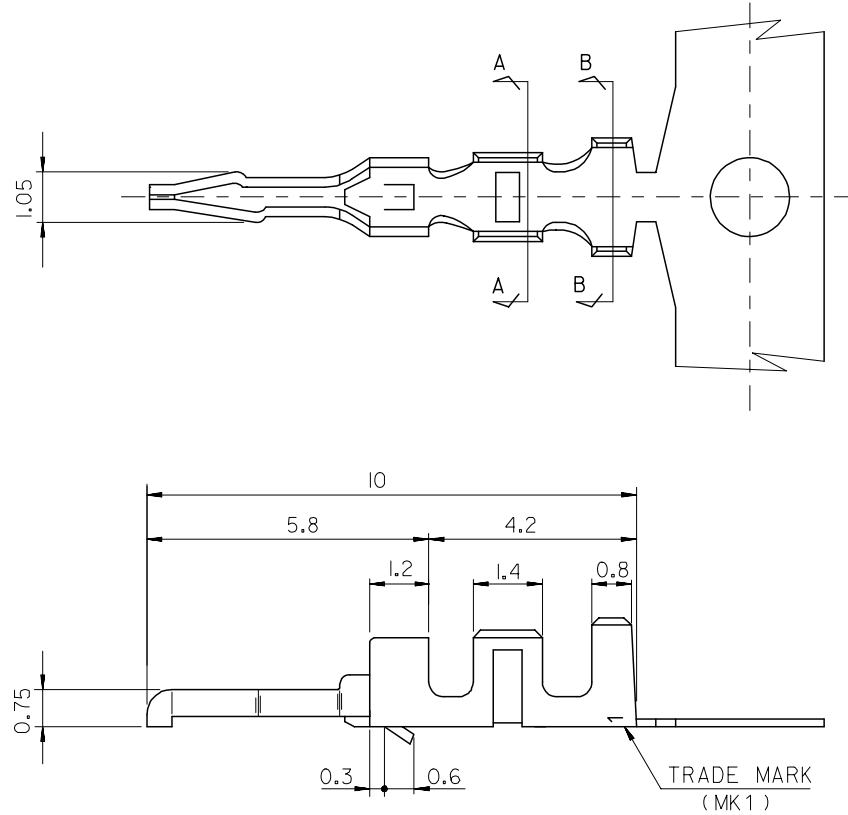
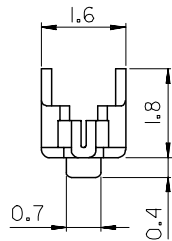
2) POST PLATING:TIN 1±3μM MIN OVER NI 1±3μM.

3. P.C BOARD HOLE : $\varnothing 1.0^{+0.05}$

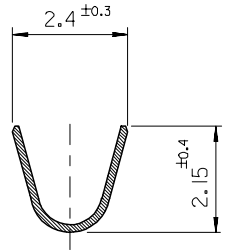
4. P.C BOARD THICKNESS : 1.6

5. USED WITH HOUSING:35164-**0*

6. PRODUCT SPECIFICATION : PS-35047-002




SECT. A-A



SECT. B-B

PRE-PLATING	350479802	35047-9802
POST-PLATING	350479810	35047-9810
PLATING	MAT'L NO.	ENG NO.

REVISED	EC NO. KOR2005-0197 DRAWN BY J.JANG (05/05/02) CHK'd Y.SIK-KIM APPR'd C.W.LEE	DESCRIPTION	QUALITY SYMBOLS	GENERAL TOLERANCES: (UNLESS SPECIFIED)			SCALE 10/1	DESIGN UNITS <input checked="" type="checkbox"/> MM <input type="checkbox"/> INCH		THIRD ANGLE PROJECTION	<input type="checkbox"/> MM INCH	<input type="checkbox"/> INCH MM	<input checked="" type="checkbox"/> MM ONLY	REVISE ON CAD ONLY
							DRAWN BY & DATE D.J.KIM 93/12/6		TITLE: 2.5 BOARD IN CONN. TERMINAL -LEAD FREE-					
							CHECKED BY & DATE J.K.OH							
							APPROVED BY & DATE C.W.LEE		MOLEX INCORPORATED KOREA					
							CAD FILENAME SD35047.DGN							
G	REV			DRAFT WHEN APPLICABLE MUST REMAIN WITHIN DIMENSIONS			THIS DRAWING CONTAINS INFORMATION THAT IS PROPRIETARY TO MOLEX INCORPORATED AND SHOULD NOT BE USED WITHOUT WRITTEN PERMISSION.							SIZE B

MX-A3