



Chipsmall Limited consists of a professional team with an average of over 10 year of expertise in the distribution of electronic components. Based in Hongkong, we have already established firm and mutual-benefit business relationships with customers from,Europe,America and south Asia,supplying obsolete and hard-to-find components to meet their specific needs.

With the principle of “Quality Parts,Customers Priority,Honest Operation,and Considerate Service”,our business mainly focus on the distribution of electronic components. Line cards we deal with include Microchip,ALPS,ROHM,Xilinx,Pulse,ON,Everlight and Freescale. Main products comprise IC,Modules,Potentiometer,IC Socket,Relay,Connector.Our parts cover such applications as commercial,industrial, and automotives areas.

We are looking forward to setting up business relationship with you and hope to provide you with the best service and solution. Let us make a better world for our industry!



Contact us

Tel: +86-755-8981 8866 Fax: +86-755-8427 6832

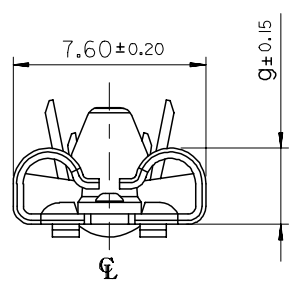
Email & Skype: info@chipsmall.com Web: www.chipsmall.com

Address: A1208, Overseas Decoration Building, #122 Zhenhua RD., Futian, Shenzhen, China

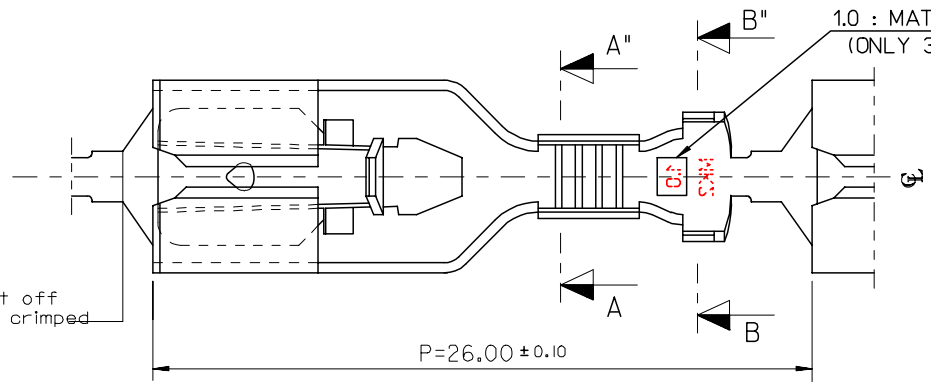


DWG. NO. SD-35072-9702
 SIMILAR ITEM
 PROJECT NO.
 DO NOT SCALE DRAWING DIMENSION IN METRIC

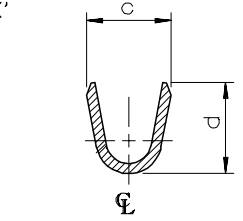
8 7 6 5 4 3 2 1



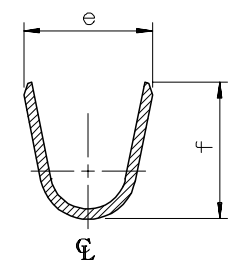
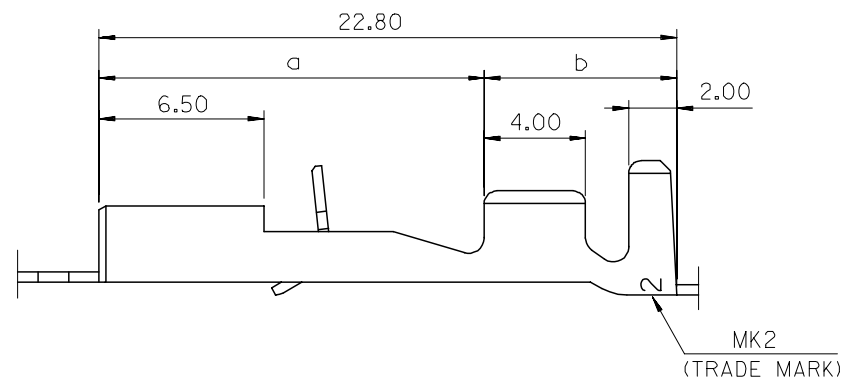
This part is cut off when wires are crimped



1.0 : MATED TAB THICK'
(ONLY 35072-9712)



SECTION: A-A'



SECTION: B-B'

ENG. NO.	a	b	c	d	e	f	g	WIRE SIZE	INSUL. DIA.	MATING TAB THICK'
35072-9702	15.1	7.7	2.6	3.2	4.8	4.8	2.92	AWG#22-18	1.5-3.1	0.8 t
35072-9802	15.1	7.7	3.7	3.6	5.0	5.5		AWG#18-14	2.2-3.4	
35072-9902	14.4	8.4	4.6	5.4	6.8	6.2		AWG#14-10	3.0-5.1	
35072-9712	15.1	7.7	2.6	3.2	4.8	4.8	3.00	AWG#22-18	1.5-3.1	1.0 t

- NOTES
- MATERIAL: TIN-PLATED BRASS 0.4mm THICK'
 - APPLICABLE HOUSING: 35196-0110
 - MATING TAB WIDTH : 6.35mm

REDRAWN ECN NO. KOR2006-0031 DRWN: J.B.JIN 05/08/30 CHK: W.Y.YANG APPR: C.W.LEE	DESCRIPTION MAJOR CRITICAL C=0	QUALITY SYMBOLS	GENERAL TOLERANCES: (UNLESS SPECIFIED)	SCALE 5:1	DESIGN UNITS <input checked="" type="checkbox"/> mm <input type="checkbox"/> INCH	THIRD ANGLE PROJECTION <input type="checkbox"/> FIRST ANGLE <input checked="" type="checkbox"/> THIRD ANGLE	DIMENSIONS: <input type="checkbox"/> mm <input type="checkbox"/> INCH <input checked="" type="checkbox"/> mm ONLY	SHT REV
		4 PLACES ±0. ±- 3 PLACES ±0. ±- 2 PLACES ±0.30 ±- 1 PLACE ±0.30 ±-	DRAWN BY & DATE W.Y.YANG 96/03/19 CHECKED BY & DATE B.K.CHOI 96/03/19 APPROVED BY & DATE C.W.LEE 96/03/19	TITLE: .250 MP-LOCK RECEPTACLE TERMINAL		REVISE ON CAD ONLY		
		ANGULAR: ± 1 ° DRAFT WHERE APPLICABLE MUST REMAIN WITHIN DIMENSIONS	CAD FILENAME W.Y.YANG 93/03/19	MATERIAL NO. SEE TABLE	DRAWING NO. SD-35072-9702	SHEET NO. 1 OF 1		

THIS DRAWING CONTAINS INFORMATION THAT IS PROPRIETARY TO MOLEX INCORPORATED AND SHOULD NOT BE USED WITHOUT WRITTEN PERMISSION.

MOLEX INCORPORATED

8 7 6 5 4 3 2 1