



Chipsmall Limited consists of a professional team with an average of over 10 year of expertise in the distribution of electronic components. Based in Hongkong, we have already established firm and mutual-benefit business relationships with customers from,Europe,America and south Asia,supplying obsolete and hard-to-find components to meet their specific needs.

With the principle of “Quality Parts,Customers Priority,Honest Operation,and Considerate Service”,our business mainly focus on the distribution of electronic components. Line cards we deal with include Microchip,ALPS,ROHM,Xilinx,Pulse,ON,Everlight and Freescale. Main products comprise IC,Modules,Potentiometer,IC Socket,Relay,Connector.Our parts cover such applications as commercial,industrial, and automotives areas.

We are looking forward to setting up business relationship with you and hope to provide you with the best service and solution. Let us make a better world for our industry!



## Contact us

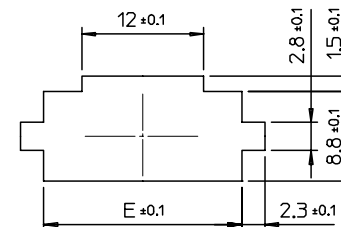
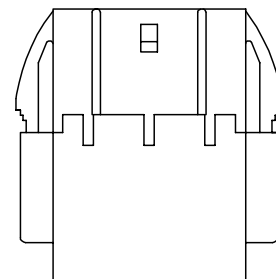
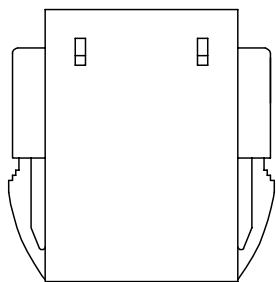
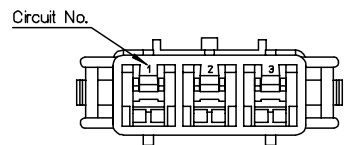
Tel: +86-755-8981 8866 Fax: +86-755-8427 6832

Email & Skype: info@chipsmall.com Web: www.chipsmall.com

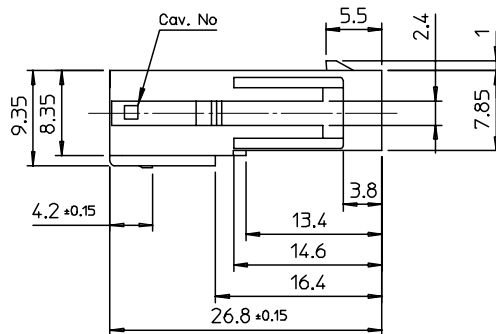
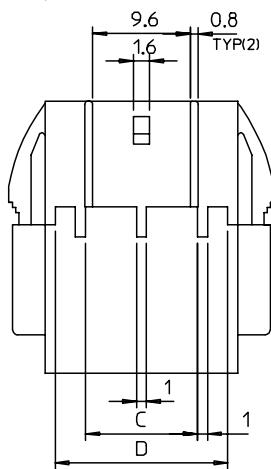
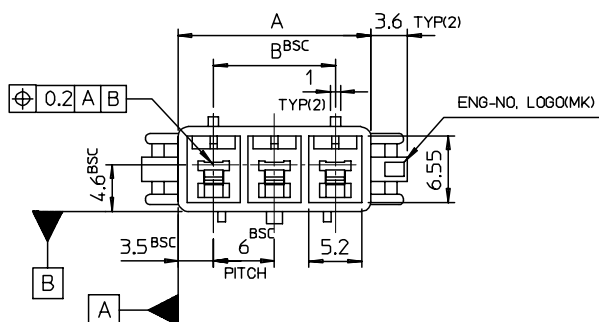
Address: A1208, Overseas Decoration Building, #122 Zhenhua RD., Futian, Shenzhen, China



DO NOT SCALE DRAWING DIMENSION IN METRIC  
 PROJECT NO. SD-35127-001  
 SIMILAR ITEM  
 DWG. NO. SD-35127-001



APPLICABLE PANNEL  
THICKNESS : 1.2~2.0mm



NOTES

1. MATERIALS: POLYESTER(PBT), UL94V-0, COLOR: NATURAL(WHITE)
2. DRAFT TO BE 0°30' UNLESS SPECIFIED.
3. WARPING TO BE 0.20 MAX.
4. PERMISSIBLE FLASH: 0.10MAX.
5. APPLICABLE MALE TERMINAL : 35040-\*\*\*\*
6. MATED FEMALE HOUSING : 35128-\*\*\*\*
7. PRODUCT SPECIFICATION : PS35127

25.5	23	11	18	25	351270400	35127-0400	4
19.5	17	11	12	19	351270300	35127-0300	3
13.5	11	5	6	13	351270200	35127-0200	2
E	D	C	B	A	MAT'L NO	ENG NO	CIRCUITS

REVISED ECN NO. KOR2000-0174 DRWN: Y.R.KIM 05.03.14 CHK: Y.SOO.KIM 05.03.14 APPR: C.W.LEE 05.03.14	QUALITY SYMBOLS MAJOR $\blacktriangledown$ = 2 CRITICAL $\triangle$ = *	GENERAL TOLERANCES: (UNLESS SPECIFIED)		SCALE 2:1	DESIGN UNITS <input checked="" type="checkbox"/> mm <input type="checkbox"/> INCH	THIRD ANGLE <input checked="" type="checkbox"/> THIRD ANGLE PROJECTION	DIMENSIONS: <input type="checkbox"/> mm <input type="checkbox"/> INCH <input checked="" type="checkbox"/> mm ONLY		SHT REV
		4 PLACES $\pm 0.$	3 PLACES $\pm 0.$	2 PLACES $\pm 0.$	1 PLACE $\pm 0.2$	ANGULAR: $\pm 1^\circ$	DRAFT WHERE APPLICABLE MUST REMAIN WITHIN DIMENSIONS	THIS DRAWING CONTAINS INFORMATION THAT IS PROPRIETARY TO MOLEX INCORPORATED AND SHOULD NOT BE USED WITHOUT WRITTEN PERMISSION.	
DESCRIPTION C		DRAWN BY & DATE Y.R.KIM 05.03.14		CHECKED BY & DATE Y.SOO.KIM 05.03.14		APPROVED BY & DATE C.W.LEE 05.03.14		TITLE: 6.0 PITCH W-t-W MALE HSG - 2,3,4P	
CAD FILENAME SD35127A_C.MI		MATERIAL NO. SEE TABLE		DRAWING NO. SD-35127-001		SHEET NO. 1 of 1		SIZE B	