



Chipsmall Limited consists of a professional team with an average of over 10 year of expertise in the distribution of electronic components. Based in Hongkong, we have already established firm and mutual-benefit business relationships with customers from,Europe,America and south Asia,supplying obsolete and hard-to-find components to meet their specific needs.

With the principle of “Quality Parts,Customers Priority,Honest Operation,and Considerate Service”,our business mainly focus on the distribution of electronic components. Line cards we deal with include Microchip,ALPS,ROHM,Xilinx,Pulse,ON,Everlight and Freescale. Main products comprise IC,Modules,Potentiometer,IC Socket,Relay,Connector.Our parts cover such applications as commercial,industrial, and automotives areas.

We are looking forward to setting up business relationship with you and hope to provide you with the best service and solution. Let us make a better world for our industry!



## Contact us

Tel: +86-755-8981 8866 Fax: +86-755-8427 6832

Email & Skype: info@chipsmall.com Web: www.chipsmall.com

Address: A1208, Overseas Decoration Building, #122 Zhenhua RD., Futian, Shenzhen, China



DWG. NO. SD-35127-003

SIMILAR ITEM

PROJECT NO.

B

DO NOT SCALE DRAWING  
DIMENSION IN METRIC

8 7 6 5 4 3 2 1

F

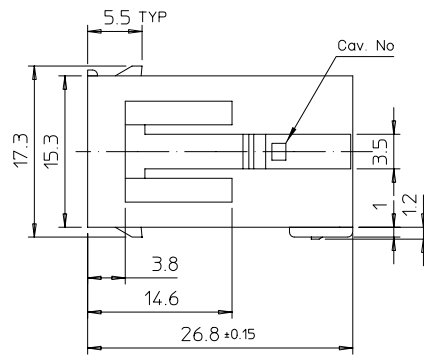
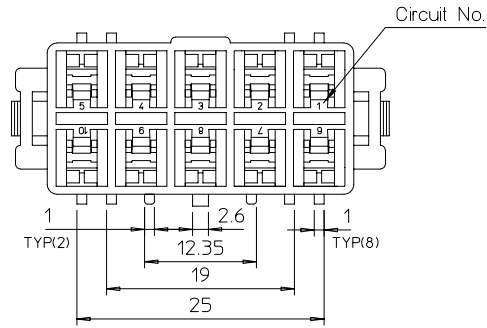
E

D

C

B

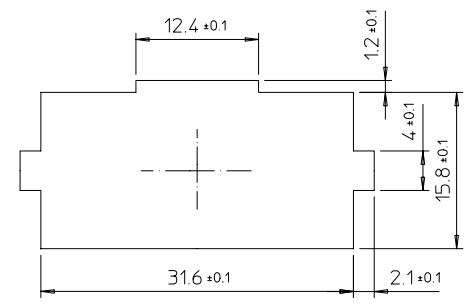
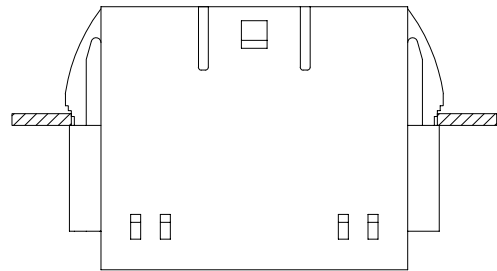
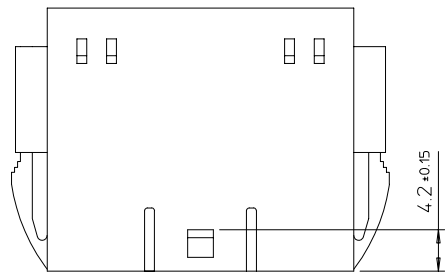
A



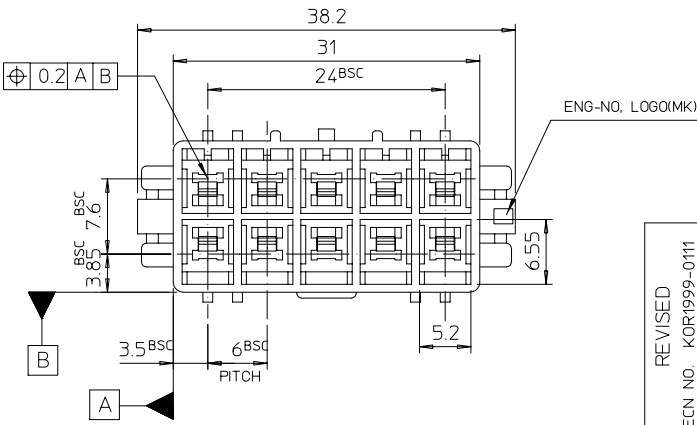
NOTES

1. MATERIALS: POLYESTER(PBT), UL94V-0, COLOR: NATURAL(WHITE)
2. DRAFT TO BE 0°30' UNLESS SPECIFIED.
3. WARPING TO BE 0.20 MAX.
4. PERMISSIBLE FLASH: 0.10MAX.
5. APPLICABLE MALE TERMINAL : 35040-\*\*\*\*
6. MATED FEMALE HOUSING : 35128-\*\*\*\*
7. PRODUCT SPECIFICATION : PS35127

351271000	35127-1000	10
MAT'L NO	ENG NO	CIRCUITS



APPLICABLE PANNEL  
THICKNESS : 1.2~2.0mm



REVISED	ECN NO. KOR1999-0111	QUALITY SYMBOLS	GENERAL TOLERANCES: (UNLESS SPECIFIED)		SCALE 2:1	DESIGN UNITS <input checked="" type="checkbox"/> mm <input type="checkbox"/> INCH	THIRD ANGLE PROJECTION <input checked="" type="checkbox"/> <input type="checkbox"/>	DIMENSIONS:		SHT	REV
	DRWN: Y.R.WI 00.0106		MAJOR	mm	INCH	<input type="checkbox"/> mm <input type="checkbox"/> INCH		<input type="checkbox"/> mm <input type="checkbox"/> INCH	<input checked="" type="checkbox"/> mm <input type="checkbox"/> INCH	<input type="checkbox"/> mm <input type="checkbox"/> INCH	REVISE ON CAD ONLY
B	CHK: JK.OH	DESCRIPTION	4 PLACES	±0.	±.	DRAWN BY & DATE Y.JKIM 92.01.17	CHECKED BY & DATE Y.JKIM 92.01.17	TITLE: 6.0 PITCH W-t-W MALE HSG - 10P			
	APPR: C.W.LEE		CRITICAL	3 PLACES	±0.			±.	APPROVED BY & DATE C.W.LEE 92.01.17	MOLEX INCORPORATED	
REV			2 PLACES	±0.	±.	CAD FILENAME SD35127C_B.MI	MATERIAL NO. SEE TABLE	DRAWING NO. SD-35127-003	SHEET NO. 1 of 1	SIZE B	
			1 PLACE	±0.2	±.	THIS DRAWING CONTAINS INFORMATION THAT IS PROPRIETARY TO MOLEX INCORPORATED AND SHOULD NOT BE USED WITHOUT WRITTEN PERMISSION.					
			ANGULAR: ± 1°		KOREA MX-A3						

8 7 6 5 4 3 2 1 KOREA MX-A3