



Chipsmall Limited consists of a professional team with an average of over 10 year of expertise in the distribution of electronic components. Based in Hongkong, we have already established firm and mutual-benefit business relationships with customers from,Europe,America and south Asia,supplying obsolete and hard-to-find components to meet their specific needs.

With the principle of “Quality Parts,Customers Priority,Honest Operation,and Considerate Service”,our business mainly focus on the distribution of electronic components. Line cards we deal with include Microchip,ALPS,ROHM,Xilinx,Pulse,ON,Everlight and Freescale. Main products comprise IC,Modules,Potentiometer,IC Socket,Relay,Connector.Our parts cover such applications as commercial,industrial, and automotives areas.

We are looking forward to setting up business relationship with you and hope to provide you with the best service and solution. Let us make a better world for our industry!



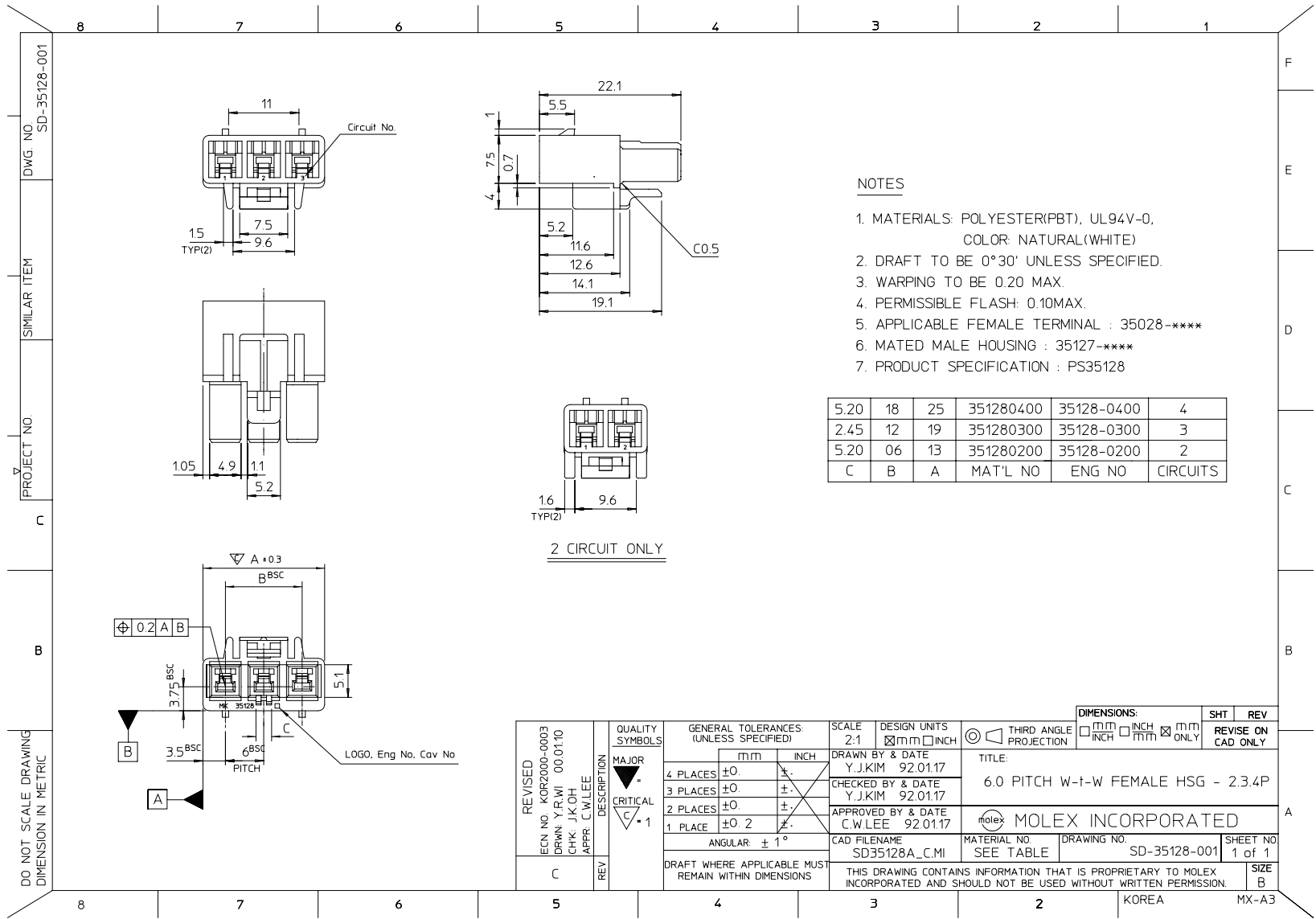
Contact us

Tel: +86-755-8981 8866 Fax: +86-755-8427 6832

Email & Skype: info@chipsmall.com Web: www.chipsmall.com

Address: A1208, Overseas Decoration Building, #122 Zhenhua RD., Futian, Shenzhen, China





NOTES

1. MATERIALS: POLYESTER(PBT), UL94V-0, COLOR: NATURAL(WHITE)
2. DRAFT TO BE 0°30' UNLESS SPECIFIED.
3. WARPING TO BE 0.20 MAX.
4. PERMISSIBLE FLASH: 0.10MAX.
5. APPLICABLE FEMALE TERMINAL : 35028-****
6. MATED MALE HOUSING : 35127-****
7. PRODUCT SPECIFICATION : PS35128

5.20	18	25	351280400	35128-0400	4
2.45	12	19	351280300	35128-0300	3
5.20	06	13	351280200	35128-0200	2
C	B	A	MAT'L NO	ENG NO	CIRCUITS

PROJECT NO. SD-35128-001
 SIMILAR ITEM
 DWG. NO.
 DO NOT SCALE DRAWING DIMENSION IN METRIC

REVISED ECN NO. KOR2000-0003 DRWN. Y.R.WI 00.01.10 CHK. J.K.OH APPR. C.W.LEE	QUALITY SYMBOLS MAJOR CRITICAL 1	GENERAL TOLERANCES: (UNLESS SPECIFIED)		SCALE 2:1	DESIGN UNITS <input checked="" type="checkbox"/> mm <input type="checkbox"/> INCH	THIRD ANGLE PROJECTION	DIMENSIONS: <input type="checkbox"/> mm <input type="checkbox"/> INCH <input checked="" type="checkbox"/> mm ONLY	SHT REVISE ON CAD ONLY	REV	
		4 PLACES ±0	3 PLACES ±0	2 PLACES ±0	1 PLACE ±0.2	DRAWN BY & DATE Y.J.KIM 92.01.17	CHECKED BY & DATE Y.J.KIM 92.01.17	APPROVED BY & DATE C.W.LEE 92.01.17	TITLE: 6.0 PITCH W-T-W FEMALE HSG - 2.34P	
		ANGULAR: ± 1°		CAD FILENAME SD35128A_C.MI		MATERIAL NO SEE TABLE	DRAWING NO. SD-35128-001	SHEET NO. 1 of 1		SIZE B
		DRAFT WHERE APPLICABLE MUST REMAIN WITHIN DIMENSIONS		THIS DRAWING CONTAINS INFORMATION THAT IS PROPRIETARY TO MOLEX INCORPORATED AND SHOULD NOT BE USED WITHOUT WRITTEN PERMISSION.						