



Chipsmall Limited consists of a professional team with an average of over 10 year of expertise in the distribution of electronic components. Based in Hongkong, we have already established firm and mutual-benefit business relationships with customers from,Europe,America and south Asia,supplying obsolete and hard-to-find components to meet their specific needs.

With the principle of “Quality Parts,Customers Priority,Honest Operation,and Considerate Service”,our business mainly focus on the distribution of electronic components. Line cards we deal with include Microchip,ALPS,ROHM,Xilinx,Pulse,ON,Everlight and Freescale. Main products comprise IC,Modules,Potentiometer,IC Socket,Relay,Connector.Our parts cover such applications as commercial,industrial, and automotives areas.

We are looking forward to setting up business relationship with you and hope to provide you with the best service and solution. Let us make a better world for our industry!



## Contact us

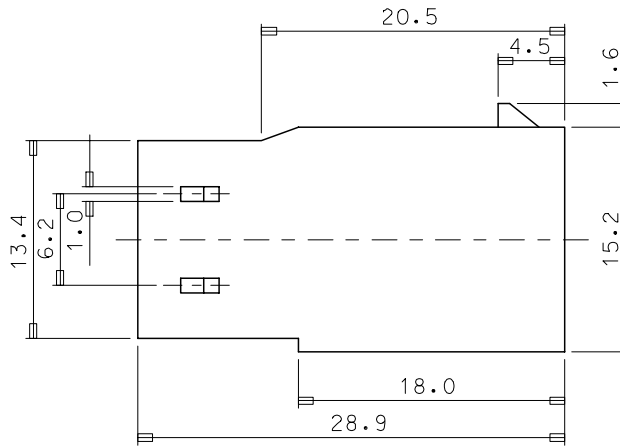
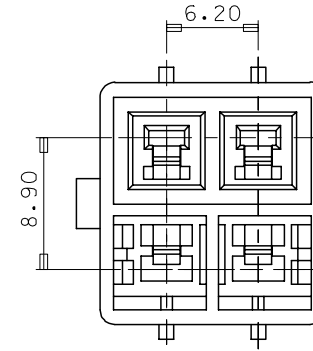
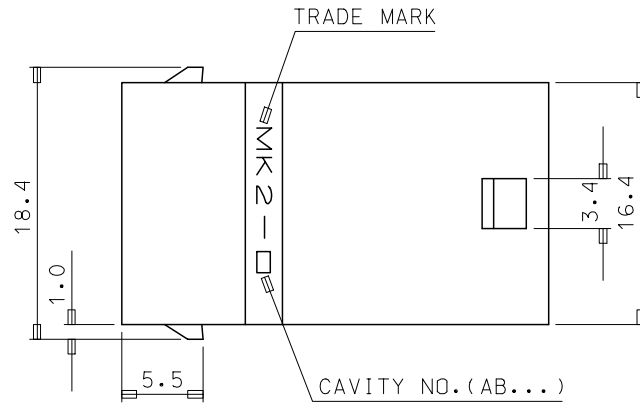
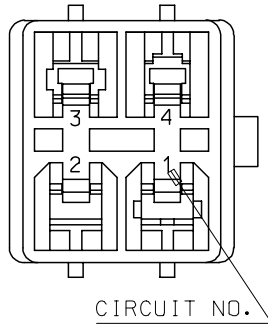
Tel: +86-755-8981 8866 Fax: +86-755-8427 6832

Email & Skype: info@chipsmall.com Web: www.chipsmall.com

Address: A1208, Overseas Decoration Building, #122 Zhenhua RD., Futian, Shenzhen, China



10 9 8 7 6 5 4 3 2 1



NOTES

- MATED HOUSING: 35151-0410
- APPLICABLE TERMINAL: 35745-\*\*\*\* (1CKT)  
35746-\*\*\*\* (3CKT)  
35747-\*\*\*\* (2CKT)  
35748-\*\*\*\* (4CKT)
- APPLICABLE T.P.A: 35150-0290

NO	PRODUCT		MATERIAL	
	PART NO	MATERIAL NO	COLOR	DESCRIPTION
1	35150-0400	351500400	NATURAL	PBT
2	35150-0404	351500404	BLUE	(UL94V-0)
3	35150-0409	351500409	NATURAL	PBT/PC(UL94V-0)

REVISED	DESCRIPTION
EC NO: KOR2008-0048	2007/09/10
DRWN: JHPARK01	2007/09/10
CHKD: WYANG	2007/09/10
APPR: YUNSIKKIM	2007/09/10

QUALITY SYMBOLS	GENERAL TOLERANCES (UNLESS SPECIFIED)	
	mm	INCH
▽=0	4 PLACES ±---	±---
▽=0	3 PLACES ±---	±---
	2 PLACES ±---	±---
	1 PLACE ±0.3	±---
	ANGULAR ± 1°	
	DRAFT WHERE APPLICABLE MUST REMAIN WITHIN DIMENSIONS	

DIMENSION STYLE	SCALE	DESIGN UNITS	THIRD ANGLE PROJECTION
MM ONLY	3:1	METRIC	
DRAWN BY	DATE	TITLE	
WY. YANG		6.2 PITCH W/W MALE HOUSING-4P	
CHECKED BY	DATE		
BK. CHOI			
APPROVED BY	DATE		
MATERIAL NO.	DOCUMENT NO.	SHEET NO.	
		1 OF 01	
SIZE	THIS DRAWING CONTAINS INFORMATION THAT IS PROPRIETARY TO MOLEX INCORPORATED AND SHOULD NOT BE USED WITHOUT WRITTEN PERMISSION		
A3	SEE TABLE		

9 8 7 6 5 4 3 2 1