



Chipsmall Limited consists of a professional team with an average of over 10 year of expertise in the distribution of electronic components. Based in Hongkong, we have already established firm and mutual-benefit business relationships with customers from,Europe,America and south Asia,supplying obsolete and hard-to-find components to meet their specific needs.

With the principle of “Quality Parts,Customers Priority,Honest Operation,and Considerate Service”,our business mainly focus on the distribution of electronic components. Line cards we deal with include Microchip,ALPS,ROHM,Xilinx,Pulse,ON,Everlight and Freescale. Main products comprise IC,Modules,Potentiometer,IC Socket,Relay,Connector.Our parts cover such applications as commercial,industrial, and automotives areas.

We are looking forward to setting up business relationship with you and hope to provide you with the best service and solution. Let us make a better world for our industry!



Contact us

Tel: +86-755-8981 8866 Fax: +86-755-8427 6832

Email & Skype: info@chipsmall.com Web: www.chipsmall.com

Address: A1208, Overseas Decoration Building, #122 Zhenhua RD., Futian, Shenzhen, China

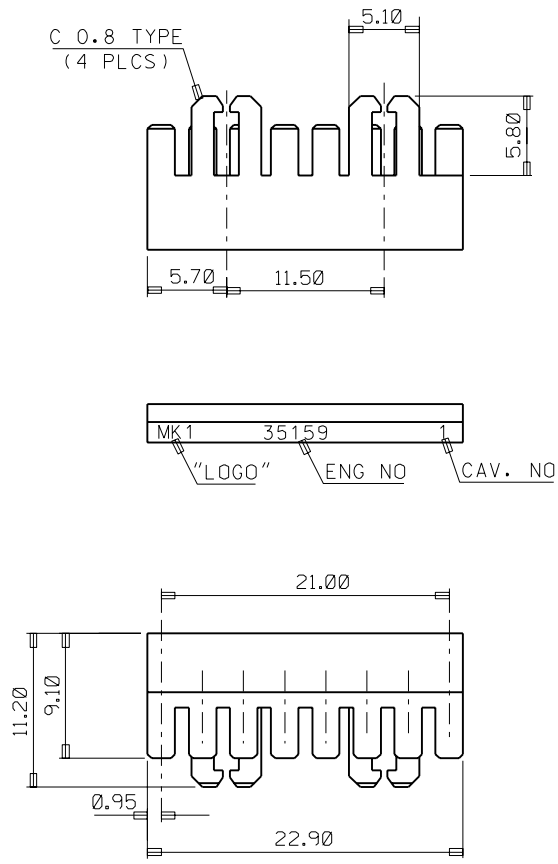


PROJECT NO.
MK PDR 93-006

SIMILAR ITEM

EDP NO.
35-159-0890

ENG. NO
SD 35159-0892

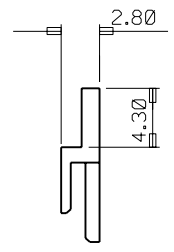


NOTE

1. MATERIAL : NYLON 66 V-2

2. COLOR : RED.

3. TO BE MATED MK PART NO. 35159-0201



				MATERIAL NYLON66 UL94 V-2		molex MOLEX-KOREA CO.,LTD.	
				GENERAL TOLERANCE DIMENSION : ± 0.30		DRAWN BY CYCHO	CHK'D BY YJKIM
				ANGLE : $\pm 1^\circ$		APP'D BY	
				DIMENSION CLASSIFICATION ▽ : CRITICAL ▼ : MAJOR		SCALE	
				94/10/17 () : REFERENCE		TITLE :	
A	NEW RELEASE			ASS'Y PART		20P HYBRID TPA	
LTR	REVISION RECORD	ECN	DATE	DESCRIPTION/ENG. NO.		SHEET 1 / 1	
REVISE ONLY ON CAD SYSTEM				FEMALE HOUSING	35159-2010	ENG. NO. SD 35159-0892	REV A