



Chipsmall Limited consists of a professional team with an average of over 10 year of expertise in the distribution of electronic components. Based in Hongkong, we have already established firm and mutual-benefit business relationships with customers from,Europe,America and south Asia,supplying obsolete and hard-to-find components to meet their specific needs.

With the principle of “Quality Parts,Customers Priority,Honest Operation,and Considerate Service”,our business mainly focus on the distribution of electronic components. Line cards we deal with include Microchip,ALPS,ROHM,Xilinx,Pulse,ON,Everlight and Freescale. Main products comprise IC,Modules,Potentiometer,IC Socket,Relay,Connector.Our parts cover such applications as commercial,industrial, and automotives areas.

We are looking forward to setting up business relationship with you and hope to provide you with the best service and solution. Let us make a better world for our industry!



Contact us

Tel: +86-755-8981 8866 Fax: +86-755-8427 6832

Email & Skype: info@chipsmall.com Web: www.chipsmall.com

Address: A1208, Overseas Decoration Building, #122 Zhenhua RD., Futian, Shenzhen, China

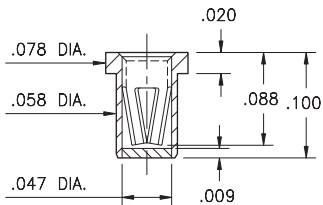


PIN RECEPTACLES

PIN RECEPTACLES WITH ORGANIC FIBRE PLUG® SOLDER BARRIER (SEE SPECIFIC CONTACT RANGE ON PAGES 254 - 262)

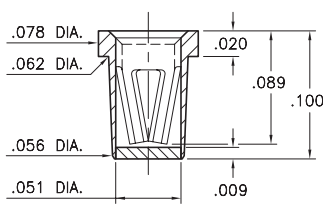
0337

0337-0-XX-XX-15-XX-10-0
Solder mount in $\varnothing .066" \pm .003"$ PTH
#15 Contact for $\varnothing .020" - .032"$ pins
Also available on 8mm wide carrier tape:
6,000 parts per 13" reel



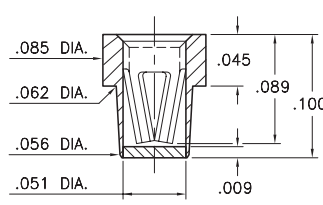
4280

4280-0-XX-XX-16-XX-10-0
Solder mount in $\varnothing .067" \pm .003"$ PTH
#16 Contact for $\varnothing .022" - .034"$ pins
Also available on 8mm wide carrier tape:
6,000 parts per 13" reel



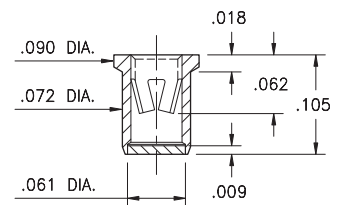
5280

5280-0-XX-XX-16-XX-40-0
Solder mount in $\varnothing .067" \pm .003"$ PTH
#16 Contact for $\varnothing .022" - .034"$ pins
Also available on 16mm wide carrier tape:
2,200 parts per 13" reel



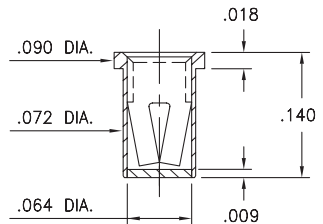
0332

0332-0-XX-XX-18-XX-10-0
Solder mount in $\varnothing .079" \pm .003"$ PTH
#18 Contact for $\varnothing .037" - .043"$ pins
Also available on 16mm wide carrier tape:
2,200 parts per 13" reel



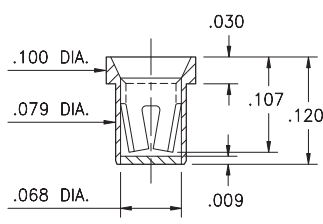
0479

0479-0-XX-XX-34-XX-10-0
Solder mount in $\varnothing .077" \pm .003"$ PTH
#34 Contact for $\varnothing .032" - .046"$ pins
Also available on 16mm wide carrier tape:
2,200 parts per 13" reel



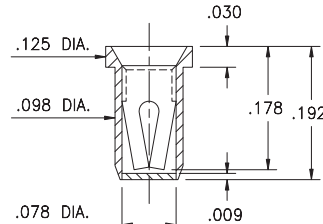
0375

0375-0-XX-XX-02-XX-10-0
Solder mount in $\varnothing .087" \pm .003"$ PTH
#02 Contact for $\varnothing .040" - .050"$ pins
Also available on 12mm wide carrier tape:
4,500 parts per 13" reel



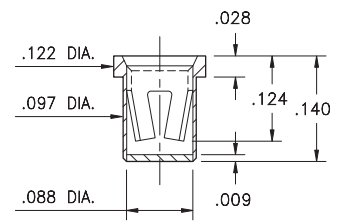
0353

0353-0-XX-XX-03-XX-10-0
Solder mount in $\varnothing .106" \pm .003"$ PTH
#03 Contact for $\varnothing .040" - .060"$ pins
Also available on 12mm wide carrier tape:
1,300 parts per 13" reel



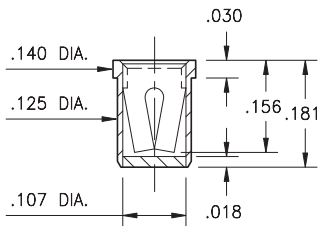
0384

0384-0-XX-XX-23-XX-10-0
Solder mount in $\varnothing .105" \pm .003"$ PTH
#23 Contact for $\varnothing .045" - .065"$ pins
Also available on 12mm wide carrier tape:
2,000 parts per 13" reel



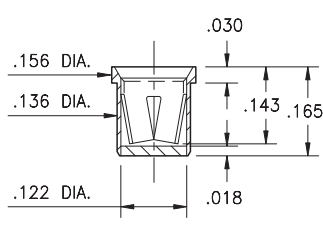
0376

0376-0-XX-XX-07-XX-10-0
Solder mount in $\varnothing .133" \pm .003"$ PTH
#07 Contact for $\varnothing .065" - .082"$ pins
Also available on 16mm wide carrier tape:
1,500 parts per 13" reel



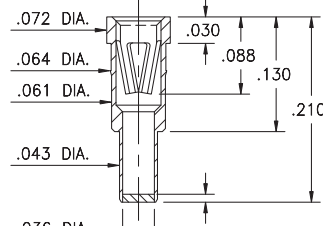
0321

0321-0-XX-XX-08-XX-10-0
Solder mount in $\varnothing .144" \pm .003"$ PTH
#08 Contact for $\varnothing .084" - .102"$ pins
Also available on 16mm wide carrier tape:
1,700 parts per 13" reel



3435

3435-0-XX-XX-47-XX-04-0
Solder mount in $\varnothing .046" \pm .003"$ PTH
#47 Contact for $\varnothing .025" - .036"$ and $\varnothing .025"$ square pins. Also available on 24mm wide carrier tape:
1,400 parts per 13" reel



SPECIFICATIONS:

Shell Material: Brass Alloy 360, 1/2 Hard
Contact Material: Beryllium Copper Alloy 172, HT
Solder Barrier: Organic Fibre Plug®
Dimensions: Inches
Tolerances On: Lengths: $\pm .005$
Diameters: $\pm .002$
Angles: $\pm 2^\circ$



ORDER CODE: XXXX - 0 - XX - XX - XX - XX - XX - 0

BASIC PART

SPECIFY PACKAGING:

43 Discrete Receptacles
67 Supplied on 13" Reels

SPECIFY SHELL FINISH:

01 200 μ " TIN/LEAD OVER NICKEL

◆ 80 200 μ " TIN OVER NICKEL (RoHS)

SPECIFY CONTACT FINISH:

◆ 27 30 μ " GOLD OVER NICKEL (RoHS)

02 100 μ " TIN/LEAD OVER NICKEL

◆ 80 200 μ " TIN OVER NICKEL (RoHS)

CONTACT:

#02, #07, #08, #15, #16, #18, #23, #34 or #47 CONTACT (DATA ON PAGES 254 - 262)

