



Chipsmall Limited consists of a professional team with an average of over 10 year of expertise in the distribution of electronic components. Based in Hongkong, we have already established firm and mutual-benefit business relationships with customers from,Europe,America and south Asia,supplying obsolete and hard-to-find components to meet their specific needs.

With the principle of "Quality Parts,Customers Priority,Honest Operation,and Considerate Service",our business mainly focus on the distribution of electronic components. Line cards we deal with include Microchip,ALPS,ROHM,Xilinx,Pulse,ON,Everlight and Freescale. Main products comprise IC,Modules,Potentiometer,IC Socket,Relay,Connector.Our parts cover such applications as commercial,industrial, and automotives areas.

We are looking forward to setting up business relationship with you and hope to provide you with the best service and solution. Let us make a better world for our industry!



Contact us

Tel: +86-755-8981 8866 Fax: +86-755-8427 6832

Email & Skype: info@chipsmall.com Web: www.chipsmall.com

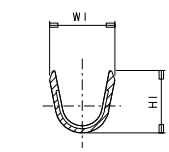
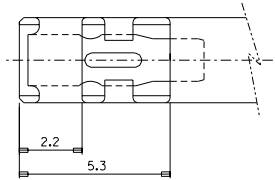
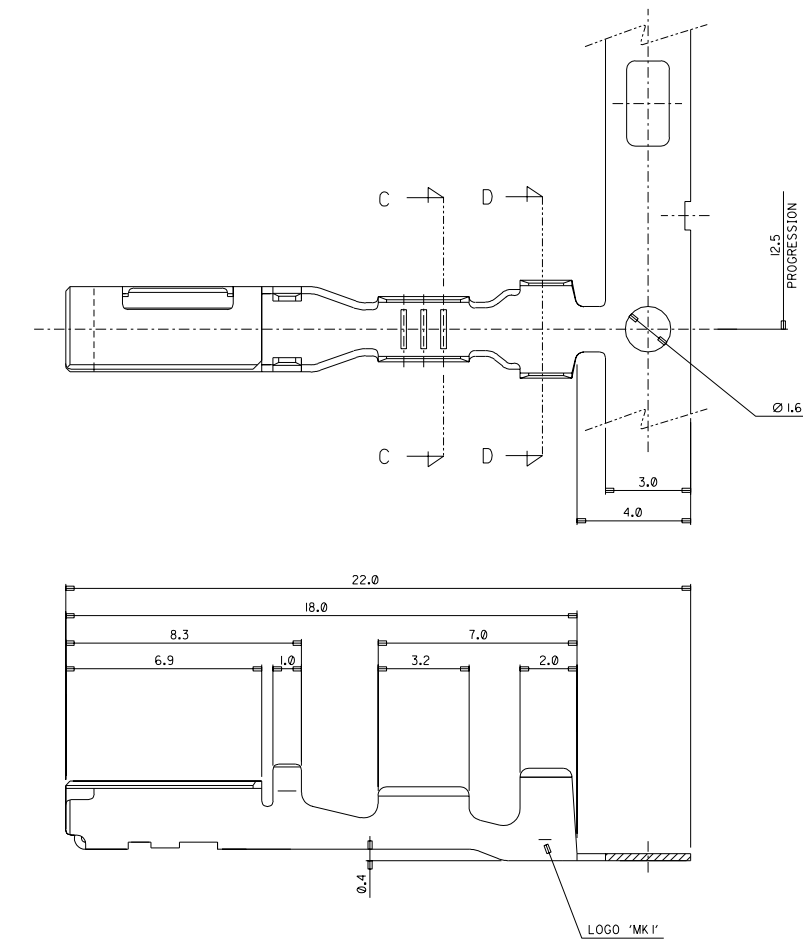
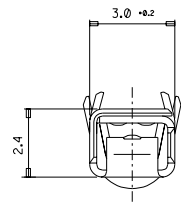
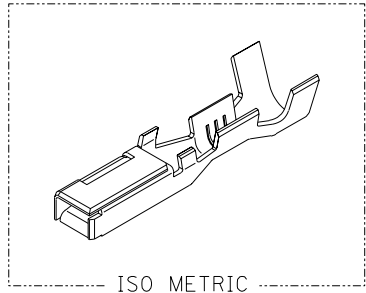
Address: A1208, Overseas Decoration Building, #122 Zhenhua RD., Futian, Shenzhen, China



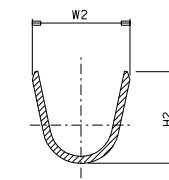
DO NOT SCALE DRAWING
DIMENSION IN METRIC

PROJECT NO. SD-35407-002

SIMILAR ITEM



SECTION: C-C



SECTION: D-D

NOTE

1. MATERIAL: COPPER ALLOY, t=0.25.
2. FINISH: PRE-TIN PLATE.
3. RECOMMENDED LENTH OF WIRE STRIP: 5.0-5.6.
4. INSERTION-EXTRACTION FORCE WITH TAB TERMINAL P/N 35420.
INSERTION FORCE : 0.30±1.0 Kgf.
AFTER SIX TIMES OF INSERTION & EXTRACTION FORCE : 0.15±1.0 Kgf.

NO.	ENG-NO.	TYPE	PART NAME	CABLE SIZE (mm ²)	DIMENSION			
					W1	H1	W2	H2
1	35407-6102	(S)	.090 FEMALE TER'L	AVSS(AVS) 0.3 - 0.5	2.5	2.4	3.4	3.5
2	35407-6202	(L)	.090 FEMALE TER'L	AVSS(AVS) 2.0	3.6	3.5	4.0	4.0
3	35407-6502	(M)	.090 FEMALE TER'L	AVSS(AVS) 0.85 - 1.25	2.6	3.0	4.0	4.0

CHANGED TENSION SPEC.
EC NO. KGR2002-0090
DRWNS:MKIM 02/07/08
CHK:J.SIK/KIM 02/07/08
APPRG:W.LEE

QUALITY SYMBOLS
MAJOR
CRITICAL

REV
C

GENERAL TOLERANCES:
(UNLESS SPECIFIED)
mm INCH
4 PLACES ±0. ±.
3 PLACES ±0. ±.
2 PLACES ±0. ±.
1 PLACE ±0.25 ±.
ANGULAR: ± 1°

DRAFT WHERE APPLICABLE MUST
REMAIN WITHIN DIMENSIONS

SCALE
8:1

DESIGN UNITS
mm INCH

DRAWN BY & DATE
B.C.YOON '98.4.10

CHECKED BY & DATE
B.K.CHOI '98.4.10

APPROVED BY & DATE
C.W.LEE '98.4.10

CAD FILENAME
SD35407.DGN

MATERIAL NO.
354076102

DRAWING NO.
SD-35407-002

SHEET NO.
1 OF 1

SIZE
C

DIMENSIONS:
mm INCH
mm ONLY

SHT
REV

THIRD ANGLE
PROJECTION

REVISE ON
CAD ONLY

TITLE:
.090 FEMALE TER'L (FT TYPE)

MOLEX INCORPORATED

THIS DRAWING CONTAINS INFORMATION THAT IS PROPRIETARY TO MOLEX
INCORPORATED AND SHOULD NOT BE USED WITHOUT WRITTEN PERMISSION.