



Chipsmall Limited consists of a professional team with an average of over 10 year of expertise in the distribution of electronic components. Based in Hongkong, we have already established firm and mutual-benefit business relationships with customers from,Europe,America and south Asia,supplying obsolete and hard-to-find components to meet their specific needs.

With the principle of "Quality Parts,Customers Priority,Honest Operation,and Considerate Service",our business mainly focus on the distribution of electronic components. Line cards we deal with include Microchip,ALPS,ROHM,Xilinx,Pulse,ON,Everlight and Freescale. Main products comprise IC,Modules,Potentiometer,IC Socket,Relay,Connector.Our parts cover such applications as commercial,industrial, and automotives areas.

We are looking forward to setting up business relationship with you and hope to provide you with the best service and solution. Let us make a better world for our industry!



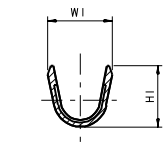
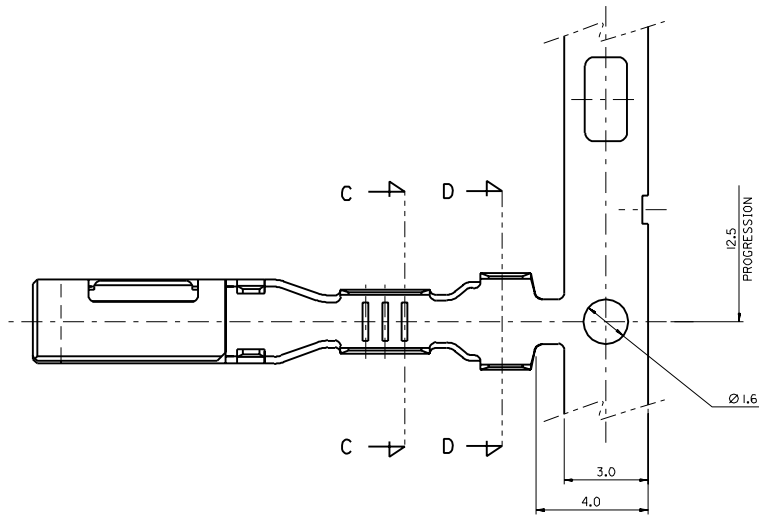
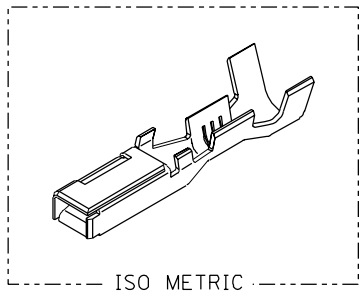
## Contact us

Tel: +86-755-8981 8866 Fax: +86-755-8427 6832

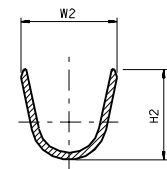
Email & Skype: [info@chipsmall.com](mailto:info@chipsmall.com) Web: [www.chipsmall.com](http://www.chipsmall.com)

Address: A1208, Overseas Decoration Building, #122 Zhenhua RD., Futian, Shenzhen, China

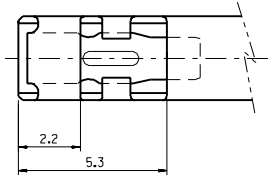
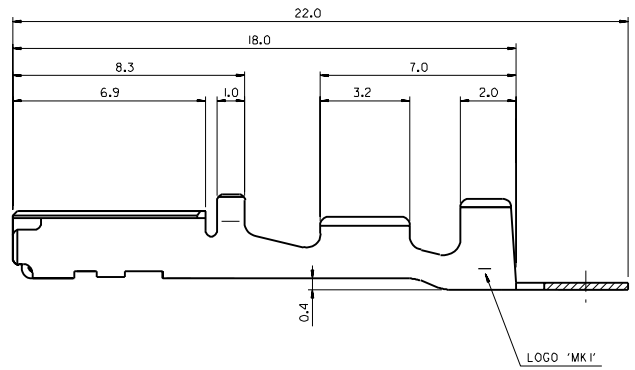
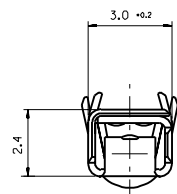




SECTION: C-C



SECTION: D-D



- NOTE**
- 1. MATERIAL: COPPER ALLOY,  $t=0.25$ .
  - 2. FINISH: PRE-TIN PLATE.
  - 3. RECOMMENDED LENGTH OF WIRE STRIP: 5.0-5.6.
  - 4. INSERTION-EXTRACTION FORCE WITH TAB TERMINAL P/N 35420.  
INSERTION FORCE :  $0.30 \pm 1.0$  Kgf.  
AFTER SIX TIMES OF INSERTION & EXTRACTION FORCE :  $0.15 \pm 1.0$  Kgf.

NO.	ENG-NO.	TYPE	PART NAME	CABLE SIZE (mm <sup>2</sup> )	DIMENSION			
					W1	H1	W2	H2
1	35407-6102	(S)	.090 FEMALE TER'L	AVSS(AVS) 0.3 - 0.5	2.5	2.4	3.4	3.5
2	35407-6202	(L)	.090 FEMALE TER'L	AVSS(AVS) 2.0	3.6	3.5	4.0	4.0
3	35407-6502	(M)	.090 FEMALE TER'L	AVSS(AVS) 0.85 - 1.25	2.6	3.0	4.0	4.0

CHANGED TENSION SPEC. EC NO. KPR2002-0090 DRWNS:JAKIM 02/07/08 CHK'D:SKJAM 02/07/08 APPRC:WLEE	QUALITY SYMBOLS MAJOR CRITICAL MINOR	GENERAL TOLERANCES: (UNLESS SPECIFIED) mm inch	SCALE 8:1	DESIGN UNITS mm inch	THIRD ANGLE PROJECTION	DIMENSIONS: mm inch mm inch	SHT REV	REVISE ON CAD ONLY			
C	REV	DESCRIPTION	DRAWN BY & DATE B.C.YOON '98.4.10		CHECKED BY & DATE B.K.CHOI '98.4.10		APPROVED BY & DATE C.W.LEE '98.4.10				
			CAD FILENAME SD35407.DGN		MATERIAL NO. 354076102		DRAWING NO. SD-35407-002				
			ANGULAR: $\pm 1^\circ$		MOLEX INCORPORATED		SHEET NO. 1 OF 1				
			DRAFT WHERE APPLICABLE MUST REMAIN WITHIN DIMENSIONS		THIS DRAWING CONTAINS INFORMATION THAT IS PROPRIETARY TO MOLEX INCORPORATED AND SHOULD NOT BE USED WITHOUT WRITTEN PERMISSION.		SIZE C				