



Chipsmall Limited consists of a professional team with an average of over 10 year of expertise in the distribution of electronic components. Based in Hongkong, we have already established firm and mutual-benefit business relationships with customers from,Europe,America and south Asia,supplying obsolete and hard-to-find components to meet their specific needs.

With the principle of “Quality Parts,Customers Priority,Honest Operation,and Considerate Service”,our business mainly focus on the distribution of electronic components. Line cards we deal with include Microchip,ALPS,ROHM,Xilinx,Pulse,ON,Everlight and Freescale. Main products comprise IC,Modules,Potentiometer,IC Socket,Relay,Connector.Our parts cover such applications as commercial,industrial, and automotives areas.

We are looking forward to setting up business relationship with you and hope to provide you with the best service and solution. Let us make a better world for our industry!



Contact us

Tel: +86-755-8981 8866 Fax: +86-755-8427 6832

Email & Skype: info@chipsmall.com Web: www.chipsmall.com

Address: A1208, Overseas Decoration Building, #122 Zhenhua RD., Futian, Shenzhen, China



DWG. 10.
SD-35413-002

SIMILAR ITEM

PROJECT NO.

C

B

DO NOT SCALE DRAWING
DIMENSION IN METRIC

8

7

6

5

4

3

2

1

F

E

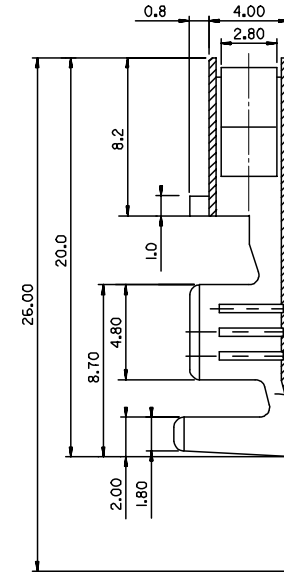
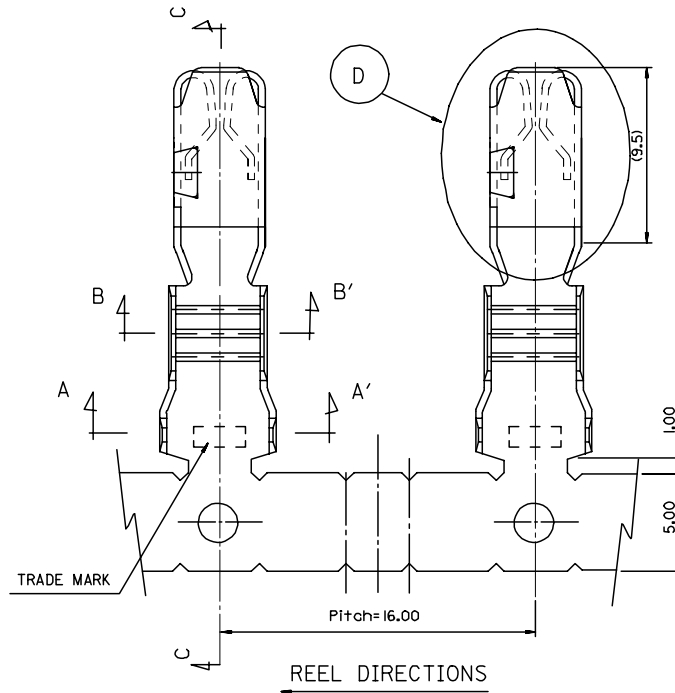
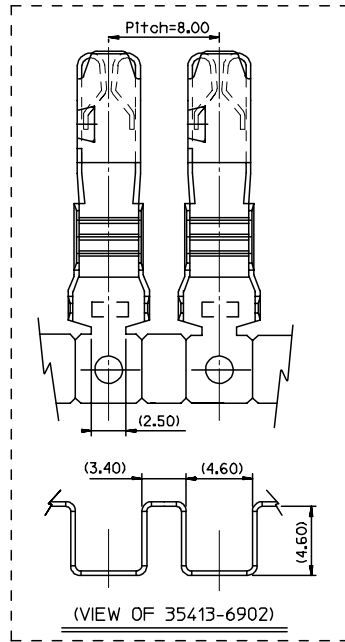
D

C

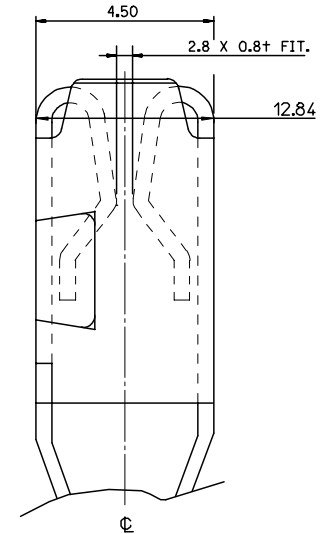
B

A

MX-A3



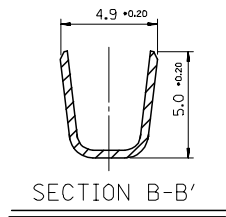
SECTION C-C'



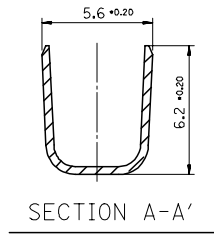
DETAIL D

NOTES

1. MATERIAL: COPPER ALLOY.
2. FINISH: PRE-TIN PLATED.
3. RECOMMENDED LENGTH OF WIRE STRIP: 6.0-6.8.



SECTION B-B'



SECTION A-A'

| ENG NO. | PITCH | WIRE SIZE |
|------------|-------|-----------|
| 35413-6402 | 16.0 | 5.0sq |
| 35413-6902 | 8.0 | |

| | | | |
|--|-------------|-----|---|
| NEW PRODUCT EC NO.: KOR2006-0098 DRWN: SY.PARK 06/02/06 CHK: BC.YOON 06/02/06 APPR: SH.CHOI 06/02/06 | DESCRIPTION | REV | A |
| | | | |
| | | | |
| | | | |

| QUALITY SYMBOLS |
|-----------------|
| MAJOR = 0 |
| CRITICAL = 0 |

| | GENERAL TOLERANCES: (UNLESS SPECIFIED) | |
|--|---|------|
| | mm | INCH |
| 4 PLACES | ±0. | ± |
| 3 PLACES | ±0. | ± |
| 2 PLACES | ±0.2 | ± |
| 1 PLACE | ±0. | ± |
| ANGULAR: ± 1.0 ° | | |
| DRAFT WHERE APPLICABLE MUST REMAIN WITHIN DIMENSIONS | | |

| | | |
|---------------------------------|--|--|
| SCALE 4/1 | DESIGN UNITS <input checked="" type="checkbox"/> mm <input type="checkbox"/> INCH | DRAWN BY & DATE SY.PARK 06/02/06 |
| | | CHECKED BY & DATE BC.YOON 06/02/06 |
| | | APPROVED BY & DATE SH.CHOI 06/02/06 |
| CAD FILENAME SD35413-002.mli | | |

| DIMENSIONS: | | SHT | REV |
|---|---|------------------------------|--------------------|
| <input type="checkbox"/> mm <input type="checkbox"/> INCH | <input checked="" type="checkbox"/> mm <input type="checkbox"/> INCH ONLY | | REVISE ON CAD ONLY |
| THIRD ANGLE PROJECTION | | TITLE: MINI FUSE TERMINAL | |
| MATERIAL NO. SEE TABLE | | DRAWING NO. SD-35413-002 | |
| SHEET NO. 1/1 | | SIZE B | |

THIS DRAWING CONTAINS INFORMATION THAT IS PROPRIETARY TO MOLEX INCORPORATED AND SHOULD NOT BE USED WITHOUT WRITTEN PERMISSION.