



Chipsmall Limited consists of a professional team with an average of over 10 year of expertise in the distribution of electronic components. Based in Hongkong, we have already established firm and mutual-benefit business relationships with customers from,Europe,America and south Asia,supplying obsolete and hard-to-find components to meet their specific needs.

With the principle of “Quality Parts,Customers Priority,Honest Operation,and Considerate Service”,our business mainly focus on the distribution of electronic components. Line cards we deal with include Microchip,ALPS,ROHM,Xilinx,Pulse,ON,Everlight and Freescale. Main products comprise IC,Modules,Potentiometer,IC Socket,Relay,Connector.Our parts cover such applications as commercial,industrial, and automotives areas.

We are looking forward to setting up business relationship with you and hope to provide you with the best service and solution. Let us make a better world for our industry!



## Contact us

Tel: +86-755-8981 8866 Fax: +86-755-8427 6832

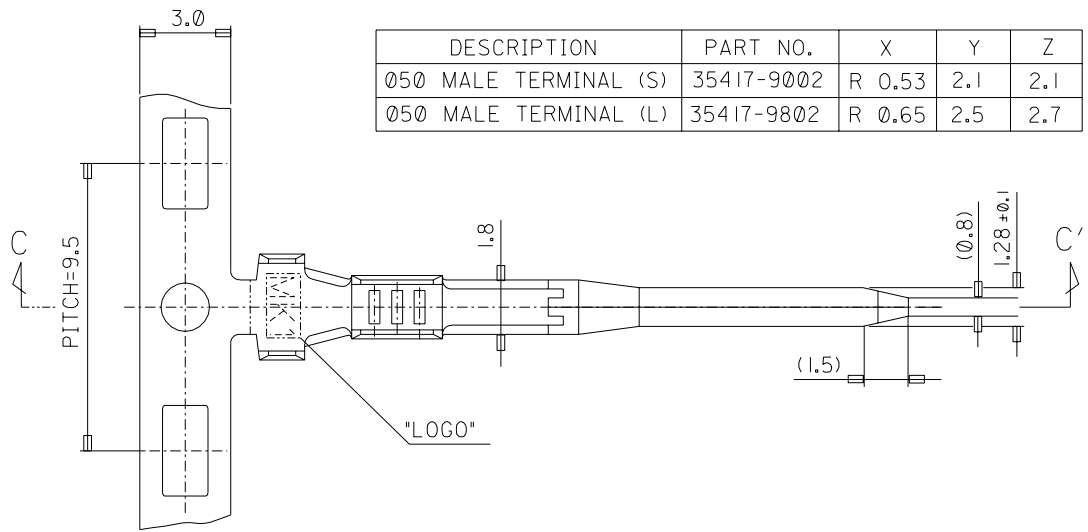
Email & Skype: [info@chipsmall.com](mailto:info@chipsmall.com) Web: [www.chipsmall.com](http://www.chipsmall.com)

Address: A1208, Overseas Decoration Building, #122 Zhenhua RD., Futian, Shenzhen, China

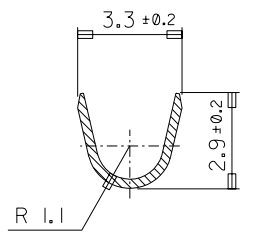


DO NOT SCALE DRAWING  
DIMENSION IN METRIC

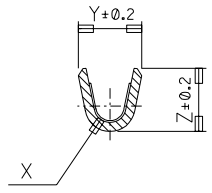
PROJECT NO. KOR 96-038  
SIMILAR ITEM  
DWG. NO. SD 35417-9002



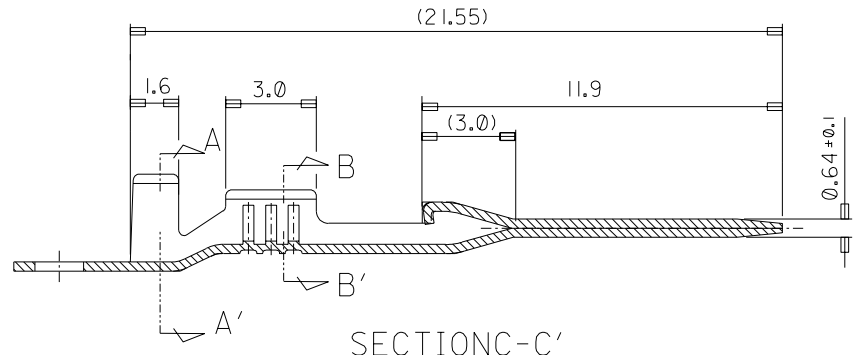
DESCRIPTION	PART NO.	X	Y	Z
050 MALE TERMINAL (S)	35417-9002	R 0.53	2.1	2.1
050 MALE TERMINAL (L)	35417-9802	R 0.65	2.5	2.7



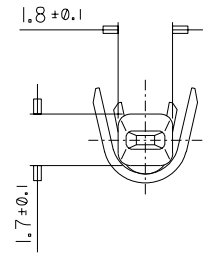
SECTION A-A'



SECTION B-B'



SECTION C-C'



- NOTE
1. MATERIAL : BRASS (C2600), THK.=0.30±0.02
  2. FINISH : PRE-TINNED 0.9 μm MIN.
  3. WIRE RANGE : AVSS OR AVS 0.3 -- 0.85 mm. <sup>2</sup>
  4. PRODUCT SPECIFICATION : CS-35417-9002.

NEW RELEASED EC NO. KOR 99-0002 DRWN: C.Y.CHO '99.01.06 CHK: B.K.CHOI APPR: C.W.LEE	QUALITY SYMBOLS MAJOR CRITICAL	GENERAL TOLERANCES: (UNLESS SPECIFIED)		SCALE 4:1	DESIGN UNITS <input checked="" type="checkbox"/> mm <input type="checkbox"/> INCH	THIRD ANGLE PROJECTION	DIMENSIONS: <input type="checkbox"/> mm <input type="checkbox"/> INCH <input checked="" type="checkbox"/> mm ONLY		SHT	REV		
		4 PLACES	±0.	±.	DRAWN BY & DATE C.Y.CHO 1998/05/18		TITLE:  .050 MALE TER'L	MOLEX INCORPORATED KOREA	SHEET NO. 1/1			
		3 PLACES	±0.	±.	CHECKED BY & DATE B.K.CHOI 1998/05/18							
		2 PLACES	±0.	±.	APPROVED BY & DATE C.W.LEE 1998/05/18							
B	REV	ANGULAR: ± 1°		CAD FILENAME SD35417.DGN		MATERIAL NO. SD 35417-9002		DRAWING NO. SD 35417-9002		THIS DRAWING CONTAINS INFORMATION THAT IS PROPRIETARY TO MOLEX INCORPORATED AND SHOULD NOT BE USED WITHOUT WRITTEN PERMISSION.		SIZE B
		DRAFT WHERE APPLICABLE MUST REMAIN WITHIN DIMENSIONS										