



Chipsmall Limited consists of a professional team with an average of over 10 year of expertise in the distribution of electronic components. Based in Hongkong, we have already established firm and mutual-benefit business relationships with customers from,Europe,America and south Asia,supplying obsolete and hard-to-find components to meet their specific needs.

With the principle of “Quality Parts,Customers Priority,Honest Operation,and Considerate Service”,our business mainly focus on the distribution of electronic components. Line cards we deal with include Microchip,ALPS,ROHM,Xilinx,Pulse,ON,Everlight and Freescale. Main products comprise IC,Modules,Potentiometer,IC Socket,Relay,Connector.Our parts cover such applications as commercial,industrial, and automotives areas.

We are looking forward to setting up business relationship with you and hope to provide you with the best service and solution. Let us make a better world for our industry!



## Contact us

Tel: +86-755-8981 8866 Fax: +86-755-8427 6832

Email & Skype: [info@chipsmall.com](mailto:info@chipsmall.com) Web: [www.chipsmall.com](http://www.chipsmall.com)

Address: A1208, Overseas Decoration Building, #122 Zhenhua RD., Futian, Shenzhen, China



DWG. NO.

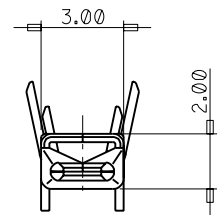
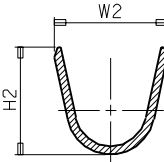
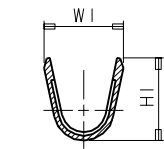
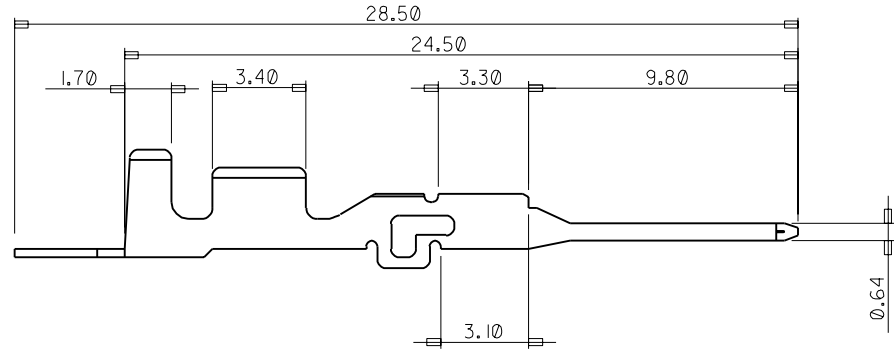
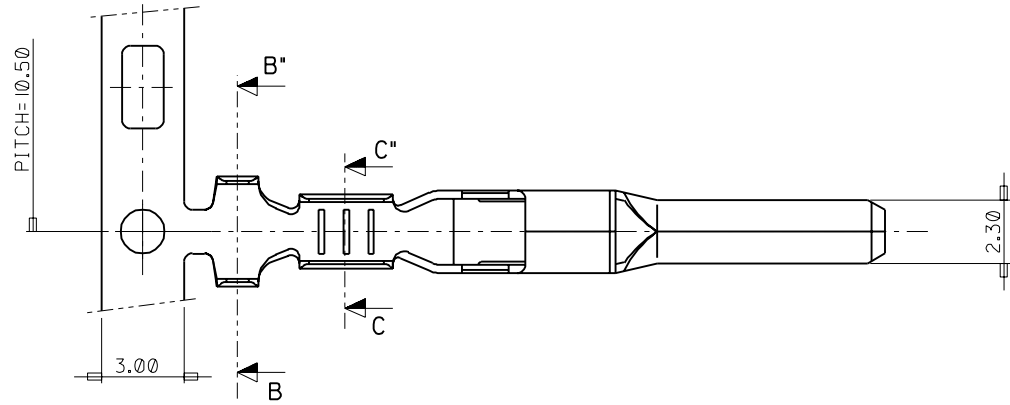
SIMILAR ITEM

PROJECT NO.

C

B

DO NOT SCALE DRAWING  
DIMENSION IN METRIC



NOTES

1. MATERIAL : PRE-TIN PLATED BRASS 0.3+

ENG.NO	DESCRIPTION	DIMENSION				WIRE RANGE mm 2
		W1	H1	W2	H2	
35420-9702	UNICONN MALE TERMINAL (S)	2.2	2.3	3.7	3.3	AVS(CAVS) 0.3,0.5
35420-9802	UNICONN MALE TERMINAL (M)	2.8	3.0	4.2	4.0	AVS(CAVS) 0.5,0.85,1.25
35420-9902	UNICONN MALE TERMINAL (L)	3.9	4.1	4.9	4.2	AVSS 2f

REVISED	EC NO. KOR 998-0072	DRWN:W.YANG 98/05/08
CHK: CHK:	APPR: APPR:	REV

DESCRIPTION	QUALITY SYMBOLS
MAJOR	MAJOR = 0
CRITICAL	CRITICAL = 0

GENERAL TOLERANCES: (UNLESS SPECIFIED)	
4 PLACES	±0. mm ±. INCH
3 PLACES	±0. mm ±. INCH
2 PLACES	±0.30 mm ±. INCH
1 PLACE	±0.30 mm ±. INCH
ANGULAR: ± 5 °	
DRAFT WHERE APPLICABLE MUST REMAIN WITHIN DIMENSIONS	

SCALE 6:1	DESIGN UNITS <input checked="" type="checkbox"/> mm <input type="checkbox"/> INCH
DRAWN BY & DATE W.Y.YANG 97/11/17	
CHECKED BY & DATE B.K.CHOI 97/11/17	
APPROVED BY & DATE C.W.LEE 97/11/17	
CAD FILENAME S4209702.DGN	

DIMENSIONS:			SHT	REV
<input type="checkbox"/> mm <input type="checkbox"/> INCH	<input checked="" type="checkbox"/> mm ONLY			REVISE ON CAD ONLY
TITLE: UNICONN MALE TERMINAL				
MOLEX INCORPORATED KOREA				
MATERIAL NO. SEE TABLE	DRAWING NO. SD 35420-9*02	SHEET NO. 10F1		
THIS DRAWING CONTAINS INFORMATION THAT IS PROPRIETARY TO MOLEX INCORPORATED AND SHOULD NOT BE USED WITHOUT WRITTEN PERMISSION.				SIZE B