



Chipsmall Limited consists of a professional team with an average of over 10 year of expertise in the distribution of electronic components. Based in Hongkong, we have already established firm and mutual-benefit business relationships with customers from,Europe,America and south Asia,supplying obsolete and hard-to-find components to meet their specific needs.

With the principle of “Quality Parts,Customers Priority,Honest Operation,and Considerate Service”,our business mainly focus on the distribution of electronic components. Line cards we deal with include Microchip,ALPS,ROHM,Xilinx,Pulse,ON,Everlight and Freescale. Main products comprise IC,Modules,Potentiometer,IC Socket,Relay,Connector.Our parts cover such applications as commercial,industrial, and automotives areas.

We are looking forward to setting up business relationship with you and hope to provide you with the best service and solution. Let us make a better world for our industry!



## Contact us

Tel: +86-755-8981 8866 Fax: +86-755-8427 6832

Email & Skype: info@chipsmall.com Web: www.chipsmall.com

Address: A1208, Overseas Decoration Building, #122 Zhenhua RD., Futian, Shenzhen, China



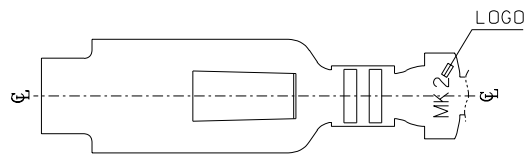
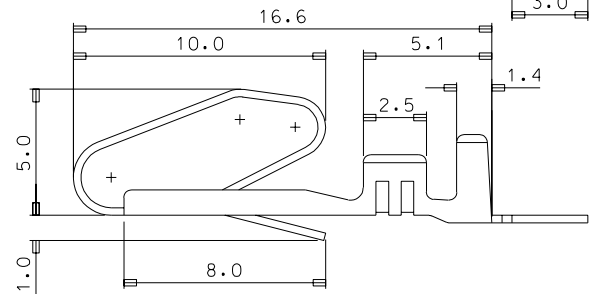
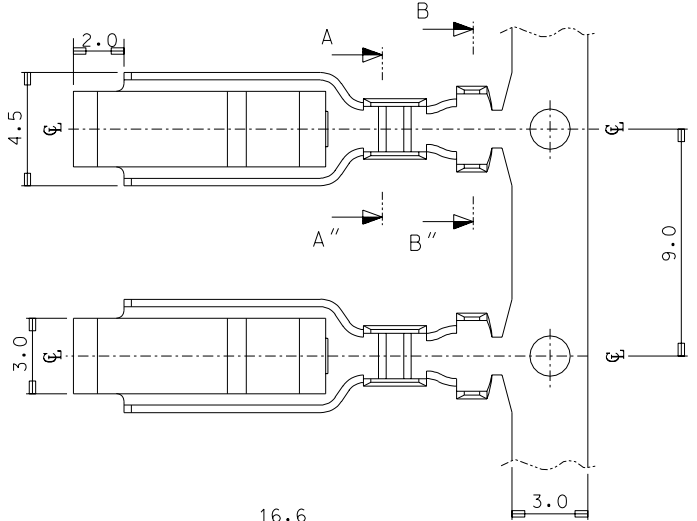
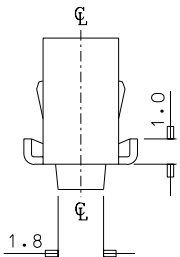
DO NOT SCALE DRAWING  
DIMENSION IN METRIC

C

PROJECT NO.

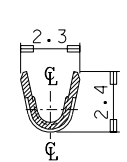
SIMILAR ITEM

DWG. NO. SD-35438-001

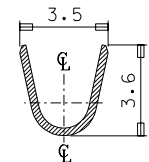


NOTES

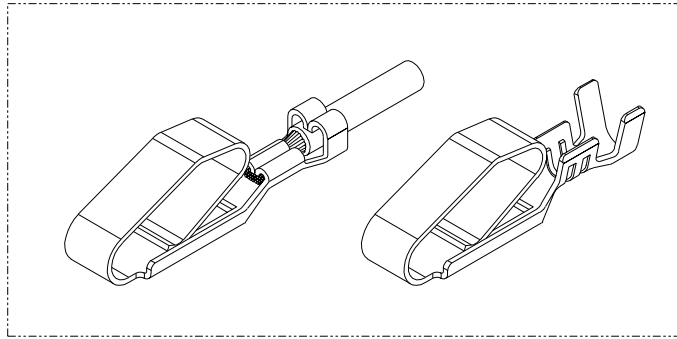
1. MATERIAL : PHOSPHOR BRONZE  
THICKNESS : 0.3mm
2. FINISH : NONE
3. APPLICABLE WIRE : 0.5 - 0.85mm<sup>2</sup>
4. RECOMMENDED LENGTH OF WIRE STRIP IS 3.2-3.8mm.
5. GENERAL TOLERANCE : ±0.3



SEC' : A-A''



SEC' : B-B''



ISOMETRIC VIEW

NEW RELEASE EC NO. K0R1997-0154 DRWN: J.S.KANG 97/11/28 CHK: APPR:	DESCRIPTION MAJOR CRITICAL	QUALITY SYMBOLS MAJOR CRITICAL		GENERAL TOLERANCES: (UNLESS SPECIFIED)		SCALE 5:1	DESIGN UNITS <input checked="" type="checkbox"/> mm <input type="checkbox"/> INCH	THIRD ANGLE PROJECTION	DIMENSIONS: <input type="checkbox"/> mm <input type="checkbox"/> INCH <input type="checkbox"/> mm <input checked="" type="checkbox"/> mm ONLY		SHT	REV			
		4 PLACES ±0.	3 PLACES ±0.	2 PLACES ±0.15	1 PLACE ±0.25	mm INCH INCH mm	DRAWN BY & DATE J.S.KANG 97/11/28		TITLE: BULB SOCKET CONTACT TERMINAL						
		ANGULAR: ± 2°				DRAFT WHERE APPLICABLE MUST REMAIN WITHIN DIMENSIONS		CHECKED BY & DATE B.K.CHOI		APPROVED BY & DATE C.W.LEE				MOLEX INCORPORATED KOREA	
		A	REV	CAD FILENAME sd35438.dgn		MATERIAL NO. 35438-8000	DRAWING NO. SD-35438-001	SHEET NO. 1 OF 1		THIS DRAWING CONTAINS INFORMATION THAT IS PROPRIETARY TO MOLEX INCORPORATED AND SHOULD NOT BE USED WITHOUT WRITTEN PERMISSION.				SIZE B	