



Chipsmall Limited consists of a professional team with an average of over 10 year of expertise in the distribution of electronic components. Based in Hongkong, we have already established firm and mutual-benefit business relationships with customers from,Europe,America and south Asia,supplying obsolete and hard-to-find components to meet their specific needs.

With the principle of “Quality Parts,Customers Priority,Honest Operation,and Considerate Service”,our business mainly focus on the distribution of electronic components. Line cards we deal with include Microchip,ALPS,ROHM,Xilinx,Pulse,ON,Everlight and Freescale. Main products comprise IC,Modules,Potentiometer,IC Socket,Relay,Connector.Our parts cover such applications as commercial,industrial, and automotives areas.

We are looking forward to setting up business relationship with you and hope to provide you with the best service and solution. Let us make a better world for our industry!



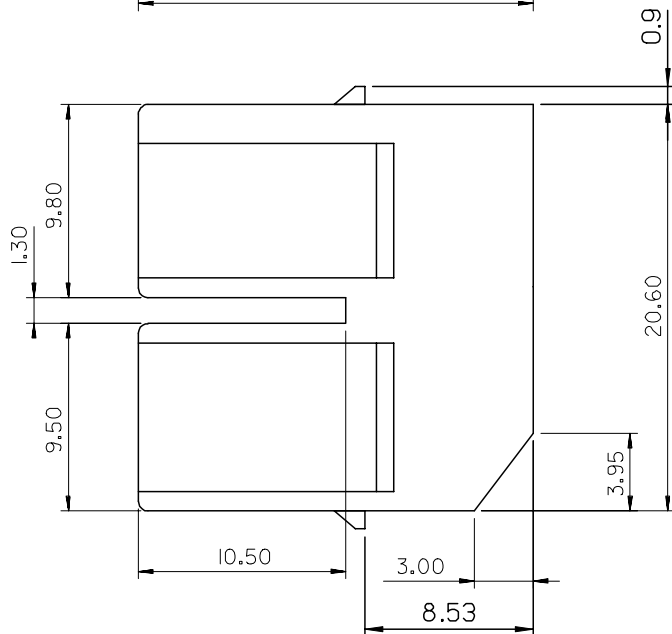
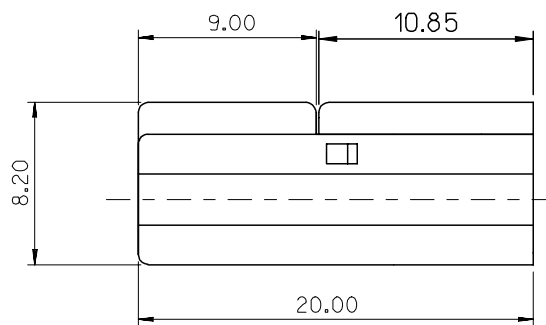
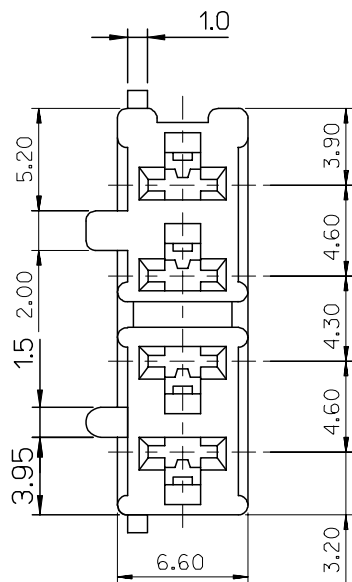
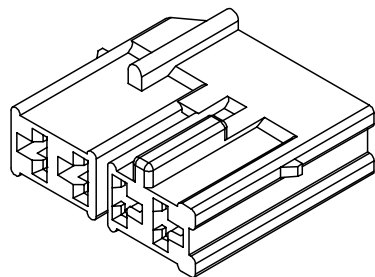
## Contact us

Tel: +86-755-8981 8866 Fax: +86-755-8427 6832

Email & Skype: [info@chipsmall.com](mailto:info@chipsmall.com) Web: [www.chipsmall.com](http://www.chipsmall.com)

Address: A1208, Overseas Decoration Building, #122 Zhenhua RD., Futian, Shenzhen, China



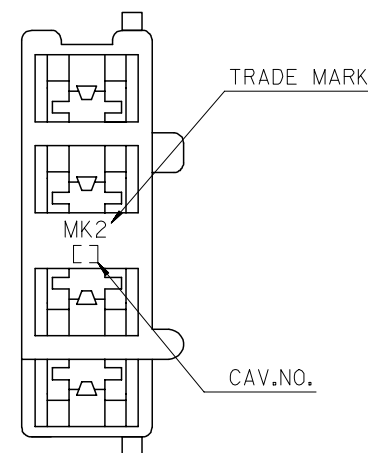



## NOTES

## I. MATERIALS

ENG.NO.	MATERIAL	COLOR
35544-0400	POLYESTER (PBT) UL94V-0	NATURAL (WHITE)
35544-9400	PBT/PC,UL94V-0	

2. APPLICABLE TERMINAL : .110 SLIP-ON REC'  
35711-07\*0/08\*0



REVISED EC NO. KOR 2005-0203 DRAWN: JBLIN 05/08/05 CHK: W.Y.YANG APPR: C.W.LEE	DESCRIPTION	QUALITY SYMBOLS <div>MAJOR △ = 0</div> <div>CRITICAL ▽ = 0</div>	GENERAL TOLERANCES: (UNLESS SPECIFIED)		SCALE 4:1	DESIGN UNITS <input checked="" type="checkbox"/> mm <input type="checkbox"/> INCH	 THIRD ANGLE PROJECTION	DIMENSIONS: <input type="checkbox"/> mm <input type="checkbox"/> INCH <input checked="" type="checkbox"/> mm ONLY		SHT REVISE ON CAD ONLY	REV															
			<table><tr><td></td><td>mm</td><td>INCH</td></tr><tr><td>4 PLACES</td><td>±0.</td><td>±.</td></tr><tr><td>3 PLACES</td><td>±0.</td><td>±.</td></tr><tr><td>2 PLACES</td><td>±0.30</td><td>±.</td></tr><tr><td>1 PLACE</td><td>±0.30</td><td>±.</td></tr></table>			mm	INCH	4 PLACES	±0.	±.	3 PLACES	±0.	±.	2 PLACES	±0.30	±.	1 PLACE	±0.30	±.	DRAWN BY & DATE W.Y.YANG 97/10/30		TITLE: .110 HOUSING-4P (FOR DOOR SWITCH)				
				mm	INCH																					
			4 PLACES	±0.	±.																					
3 PLACES	±0.	±.																								
2 PLACES	±0.30	±.																								
1 PLACE	±0.30	±.																								
		CHECKED BY & DATE B.K.CHOI 97/10/30																								
		APPROVED BY & DATE C.W.LEE 97/10/30		MOLEX INCORPORATED																						
		ANGULAR: ± 3.0°		CAD FILENAME S35544A.DGN		MATERIAL NO. SEE TABLE		DRAWING NO. SD-35544-001		SHEET NO. 1/1																
B	REV	DRAFT WHERE APPLICABLE MUST REMAIN WITHIN DIMENSIONS				THIS DRAWING CONTAINS INFORMATION THAT IS PROPRIETARY TO MOLEX INCORPORATED AND SHOULD NOT BE USED WITHOUT WRITTEN PERMISSION.							SIZE B													