



Chipsmall Limited consists of a professional team with an average of over 10 year of expertise in the distribution of electronic components. Based in Hongkong, we have already established firm and mutual-benefit business relationships with customers from,Europe,America and south Asia,supplying obsolete and hard-to-find components to meet their specific needs.

With the principle of “Quality Parts,Customers Priority,Honest Operation,and Considerate Service”,our business mainly focus on the distribution of electronic components. Line cards we deal with include Microchip,ALPS,ROHM,Xilinx,Pulse,ON,Everlight and Freescale. Main products comprise IC,Modules,Potentiometer,IC Socket,Relay,Connector.Our parts cover such applications as commercial,industrial, and automotives areas.

We are looking forward to setting up business relationship with you and hope to provide you with the best service and solution. Let us make a better world for our industry!



Contact us

Tel: +86-755-8981 8866 Fax: +86-755-8427 6832

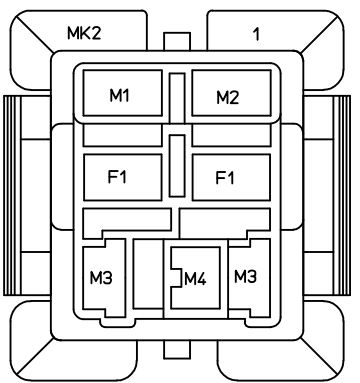
Email & Skype: info@chipsmall.com Web: www.chipsmall.com

Address: A1208, Overseas Decoration Building, #122 Zhenhua RD., Futian, Shenzhen, China

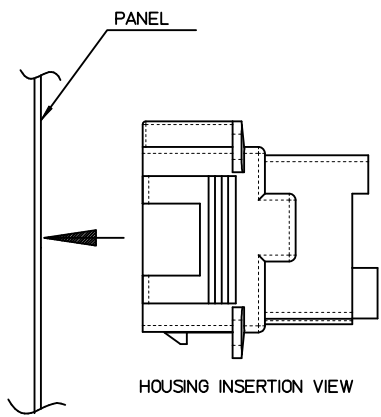
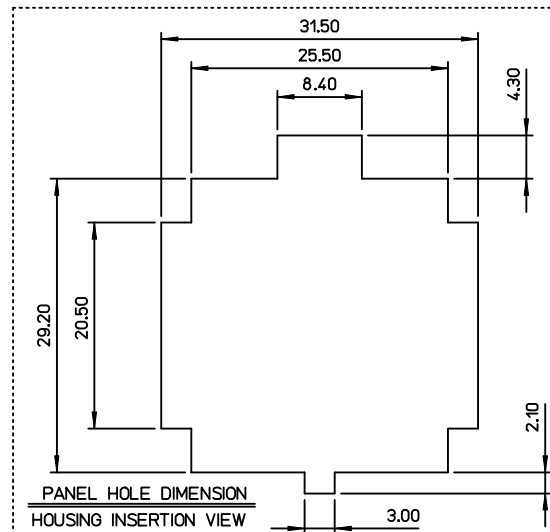
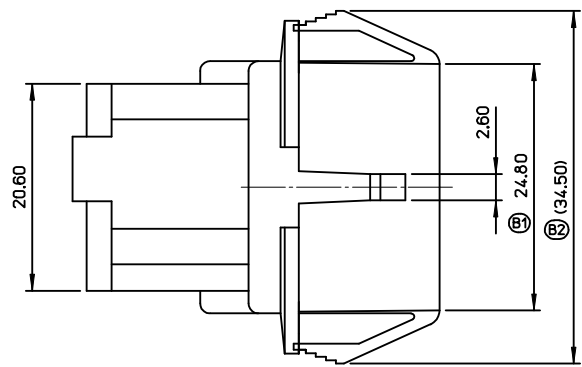
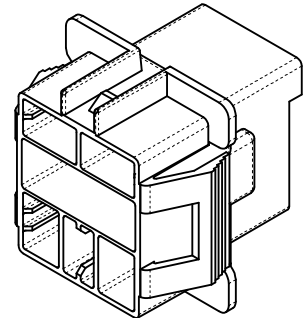
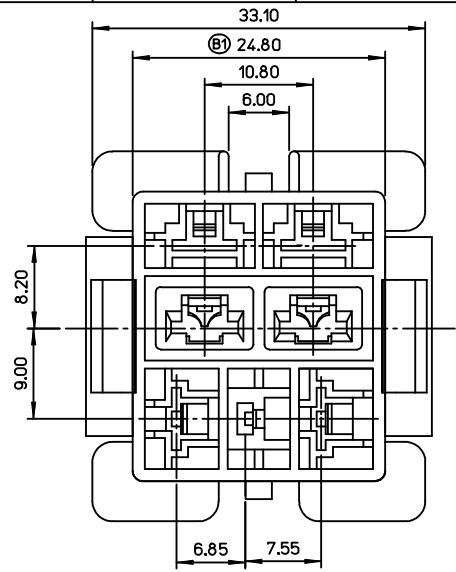
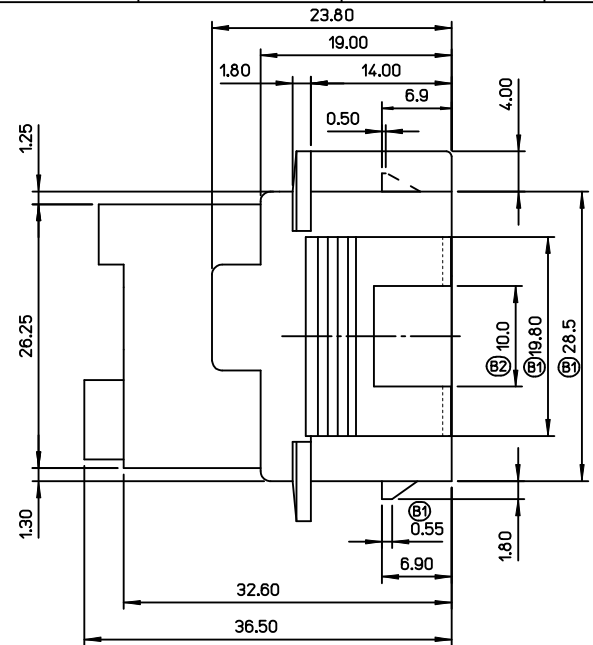


10 9 8 7 6 5 4 3 2 1

TERMINAL PATTERN



- M1 TERMINAL : 35453-9*02
- M2 TERMINAL : 35452-9*02
- M3 TERMINAL : 35725-18/10/1910/3010
- M4 TERMINAL : 35765-0110/0210
- F1 TERMINAL : 35725-5*10
- M = MALE TERMINAL
- F = FEMALE TERMINAL



NOTES

1. MATERIAL :
POLYESTER(PBT), NO GLASS FILLED, UL94V-0,
COLOR : NATURAL
2. PRODUCT SPECIFICATION : PS-35546-001
3. PACKING SPECIFICATION : PK-35546-001
4. MATED HOUSING : 35547-030*
35547-040*

REVISED EC NO: KOR2013-0091 DRWN: JSSHIN 2013/04/02 CHKD: SHCHU 2013/04/02 APPR: YSKIM02 2013/04/08	DESCRIPTION REV	QUALITY SYMBOLS	GENERAL TOLERANCES (UNLESS SPECIFIED)	DIMENSION STYLE	SCALE	DESIGN UNITS	THIRD ANGLE PROJECTION
		▽=0 ▽=0	mm INCH 4 PLACES ± --- ± --- 3 PLACES ± --- ± --- 2 PLACES ± 0.30 ± --- 1 PLACE ± 0.30 ± --- 0 PLACE ± --- ± ---	MM ONLY	2:1	METRIC	
		ANGULAR ± 1 ° DRAFT WHERE APPLICABLE MUST REMAIN WITHIN DIMENSIONS	DRAWN BY: WY. YANG CHECKED BY: BK. CHOI APPROVED BY: CW. LEE DATE: 1997/11/12 DATE: 1997/11/12 DATE: 1997/11/12	TITLE	.250 MULTI W-T-W CONN. RECEPTACLE HOUSING-7P		
		MATERIAL NO. 355460700 SIZE A3 THIS DRAWING CONTAINS INFORMATION THAT IS PROPRIETARY TO MOLEX INCORPORATED AND SHOULD NOT BE USED WITHOUT WRITTEN PERMISSION	DOCUMENT NO. SD-35546-001 SHEET NO. 1 OF 1	molex			

9 8 7 6 5 4 3 2 1