



Chipsmall Limited consists of a professional team with an average of over 10 year of expertise in the distribution of electronic components. Based in Hongkong, we have already established firm and mutual-benefit business relationships with customers from,Europe,America and south Asia,supplying obsolete and hard-to-find components to meet their specific needs.

With the principle of “Quality Parts,Customers Priority,Honest Operation,and Considerate Service”,our business mainly focus on the distribution of electronic components. Line cards we deal with include Microchip,ALPS,ROHM,Xilinx,Pulse,ON,Everlight and Freescale. Main products comprise IC,Modules,Potentiometer,IC Socket,Relay,Connector.Our parts cover such applications as commercial,industrial, and automotives areas.

We are looking forward to setting up business relationship with you and hope to provide you with the best service and solution. Let us make a better world for our industry!



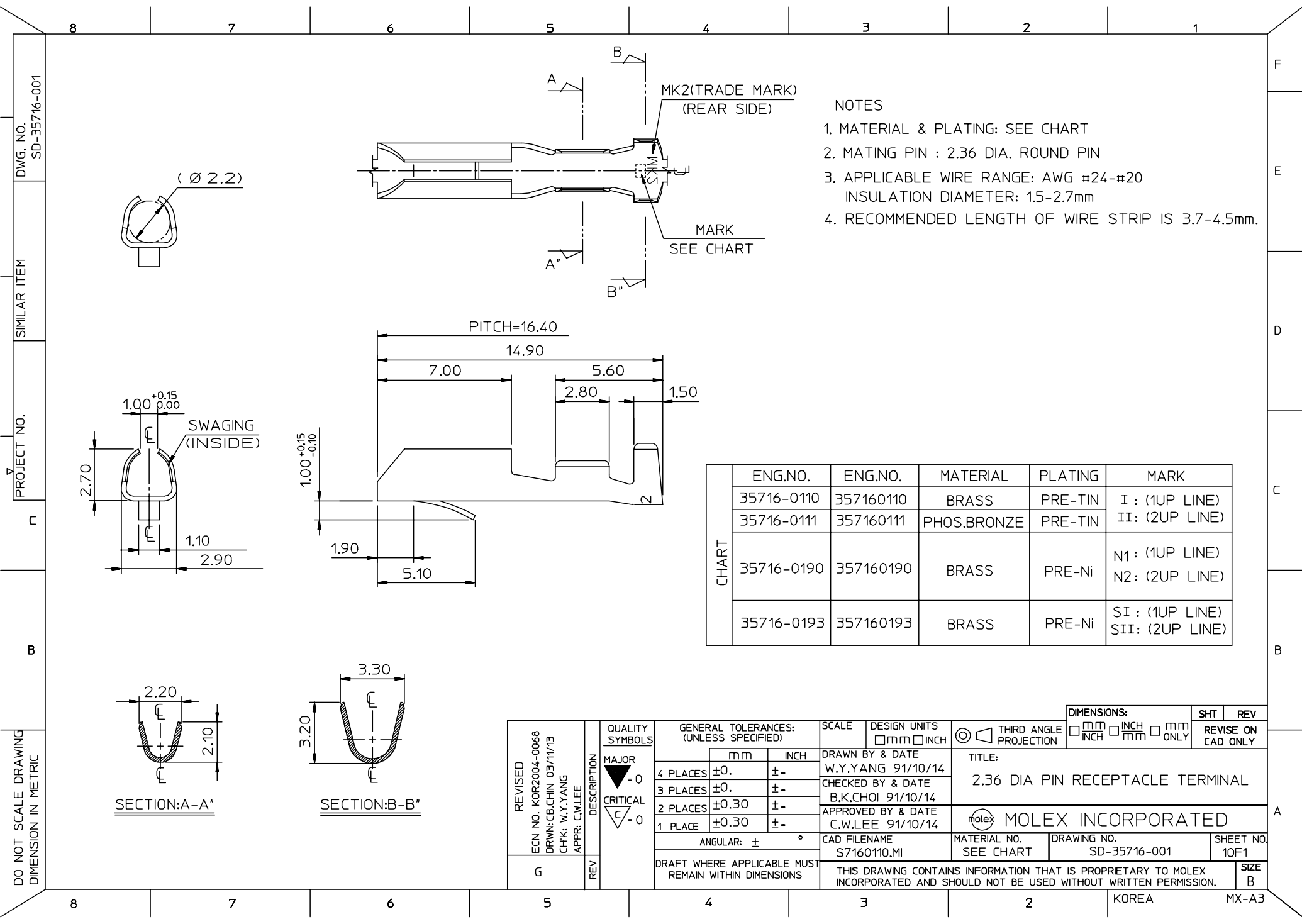
Contact us

Tel: +86-755-8981 8866 Fax: +86-755-8427 6832

Email & Skype: info@chipsmall.com Web: www.chipsmall.com

Address: A1208, Overseas Decoration Building, #122 Zhenhua RD., Futian, Shenzhen, China









NOTES

- 1. MATERIAL & PLATING: SEE CHART
- 2. MATING PIN : 2.36 DIA. ROUND PIN
- 3. APPLICABLE WIRE RANGE: AWG #24-#20
INSULATION DIAMETER: 1.5-2.7mm
- 4. RECOMMENDED LENGTH OF WIRE STRIP IS 3.7-4.5mm.

CHART	ENG.NO.	ENG.NO.	MATERIAL	PLATING	MARK
	35716-0110	357160110	BRASS	PRE-TIN	I : (1UP LINE)
	35716-0111	357160111	PHOS.BRONZE	PRE-TIN	II: (2UP LINE)
	35716-0190	357160190	BRASS	PRE-Ni	N1 : (1UP LINE) N2: (2UP LINE)
	35716-0193	357160193	BRASS	PRE-Ni	SI : (1UP LINE) SII: (2UP LINE)

REVISED ECN NO. KOR2004-0068 DRWN:CB,CHIN 03/11/13 CHK: W.Y.YANG APPR: C.W.LEE	DESCRIPTION	QUALITY SYMBOLS	GENERAL TOLERANCES: (UNLESS SPECIFIED)		SCALE	DESIGN UNITS <input type="checkbox"/> mm <input type="checkbox"/> INCH	 THIRD ANGLE PROJECTION	<input type="checkbox"/> mm <input type="checkbox"/> INCH <input type="checkbox"/> mm ONLY	REVISE ON CAD ONLY	
		MAJOR  =0					TITLE: 2.36 DIA PIN RECEPTACLE TERMINAL			
		CRITICAL  =0								
		<input type="checkbox"/> mm <input type="checkbox"/> INCH		DRAWN BY & DATE W.Y.YANG 91/10/14						
		<input type="checkbox"/> mm <input type="checkbox"/> INCH		CHECKED BY & DATE B.K.CHOI 91/10/14						
		<input type="checkbox"/> mm <input type="checkbox"/> INCH		APPROVED BY & DATE C.W.LEE 91/10/14		 MOLEX INCORPORATED				
G	REV	ANGULAR: ± °		CAD FILENAME S7160110.MI		MATERIAL NO. SEE CHART		DRAWING NO. SD-35716-001		SHEET NO 10F1
		DRAFT WHERE APPLICABLE MUST REMAIN WITHIN DIMENSIONS		THIS DRAWING CONTAINS INFORMATION THAT IS PROPRIETARY TO MOLEX INCORPORATED AND SHOULD NOT BE USED WITHOUT WRITTEN PERMISSION.						
				SIZE B						