



Chipsmall Limited consists of a professional team with an average of over 10 year of expertise in the distribution of electronic components. Based in Hongkong, we have already established firm and mutual-benefit business relationships with customers from,Europe,America and south Asia,supplying obsolete and hard-to-find components to meet their specific needs.

With the principle of “Quality Parts,Customers Priority,Honest Operation,and Considerate Service”,our business mainly focus on the distribution of electronic components. Line cards we deal with include Microchip,ALPS,ROHM,Xilinx,Pulse,ON,Everlight and Freescale. Main products comprise IC,Modules,Potentiometer,IC Socket,Relay,Connector.Our parts cover such applications as commercial,industrial, and automotives areas.

We are looking forward to setting up business relationship with you and hope to provide you with the best service and solution. Let us make a better world for our industry!



Contact us

Tel: +86-755-8981 8866 Fax: +86-755-8427 6832

Email & Skype: info@chipsmall.com Web: www.chipsmall.com

Address: A1208, Overseas Decoration Building, #122 Zhenhua RD., Futian, Shenzhen, China



DO NOT SCALE DRAWING
DIMENSION IN METRIC

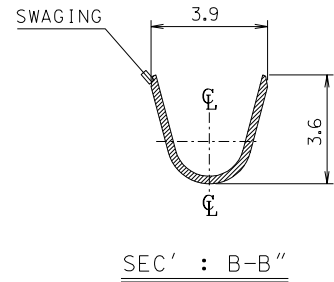
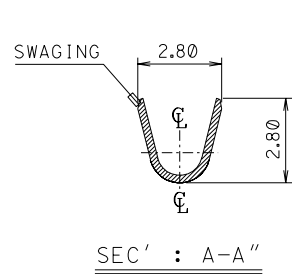
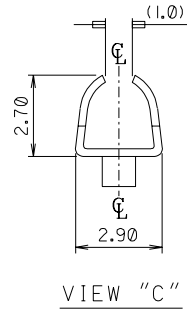
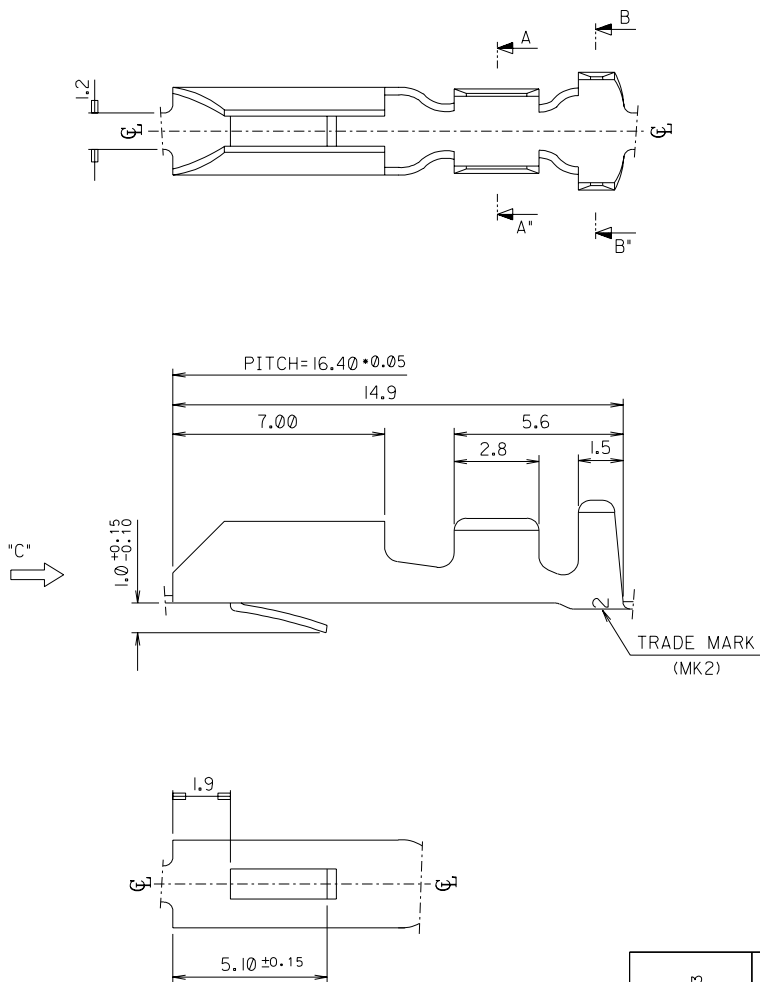
B

C


PROJECT NO.

SIMILAR ITEM

DWG. NO.
SD 35716-0310



- NOTES
1. MATERIAL : BRASS, 0.25mm THICKNESS
 2. FINISH : PRE-PLATED TIN
 3. MATING PIN : 2.36 DIA. PIN
 4. RECOMMENDED LENGTH OF WIRE STRIP IS 3.7-4.5mm.
 5. APPLICABLE WIRE RANGE : AWG #20-#18
INSULATION DIAMETER : 2.0 - 2.8mm

REVISED EC NO. KOR2004-0068 DRWN: C.B.CHIN 03/11/13 CHK: W.Y.YANG APPR: C.W.LEE	DESCRIPTION	QUALITY SYMBOLS MAJOR CRITICAL	GENERAL TOLERANCES: (UNLESS SPECIFIED)		SCALE 6:1	DESIGN UNITS <input checked="" type="checkbox"/> mm <input type="checkbox"/> INCH	 THIRD ANGLE PROJECTION	DIMENSIONS: <input type="checkbox"/> mm <input type="checkbox"/> INCH <input checked="" type="checkbox"/> mm ONLY		SHT	REV	
									REVISE ON CAD ONLY			
B1	REV		4 PLACES		±0.	±.	DRAWN BY & DATE W.Y.YANG 92/04/21 CHECKED BY & DATE B.K.CHOI 92/04/21 APPROVED BY & DATE C.W.LEE 92/04/21		TITLE: 2.36 DIA. PIN RECEPTACLE (L)			
			3 PLACES		±0.	±.						
			2 PLACES		±0.30	±.	MOLEX MOLEX INCORPORATED					
			1 PLACE		±0.30	±.						
			ANGULAR: ±		°	CAD FILENAME S7160310.DGN	MATERIAL NO. 357160310	DRAWING NO. SD-35716-0310	SHEET NO. 1 of 1			
DRAFT WHERE APPLICABLE MUST REMAIN WITHIN DIMENSIONS		THIS DRAWING CONTAINS INFORMATION THAT IS PROPRIETARY TO MOLEX INCORPORATED AND SHOULD NOT BE USED WITHOUT WRITTEN PERMISSION.							SIZE B			