



Chipsmall Limited consists of a professional team with an average of over 10 year of expertise in the distribution of electronic components. Based in Hongkong, we have already established firm and mutual-benefit business relationships with customers from,Europe,America and south Asia,supplying obsolete and hard-to-find components to meet their specific needs.

With the principle of “Quality Parts,Customers Priority,Honest Operation,and Considerate Service”,our business mainly focus on the distribution of electronic components. Line cards we deal with include Microchip,ALPS,ROHM,Xilinx,Pulse,ON,Everlight and Freescale. Main products comprise IC,Modules,Potentiometer,IC Socket,Relay,Connector.Our parts cover such applications as commercial,industrial, and automotives areas.

We are looking forward to setting up business relationship with you and hope to provide you with the best service and solution. Let us make a better world for our industry!



## Contact us

Tel: +86-755-8981 8866 Fax: +86-755-8427 6832

Email & Skype: info@chipsmall.com Web: www.chipsmall.com

Address: A1208, Overseas Decoration Building, #122 Zhenhua RD., Futian, Shenzhen, China



DO NOT SCALE DRAWING  
DIMENSION IN METRIC

B

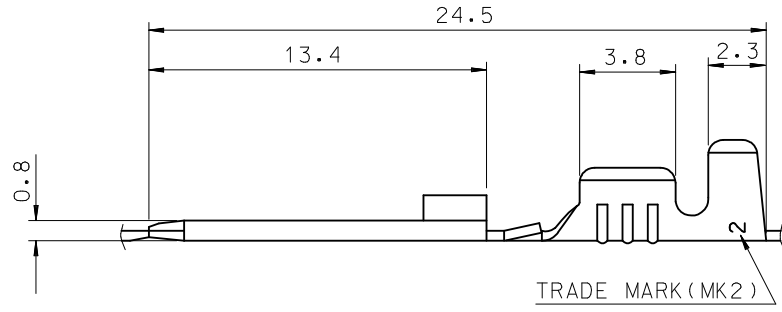
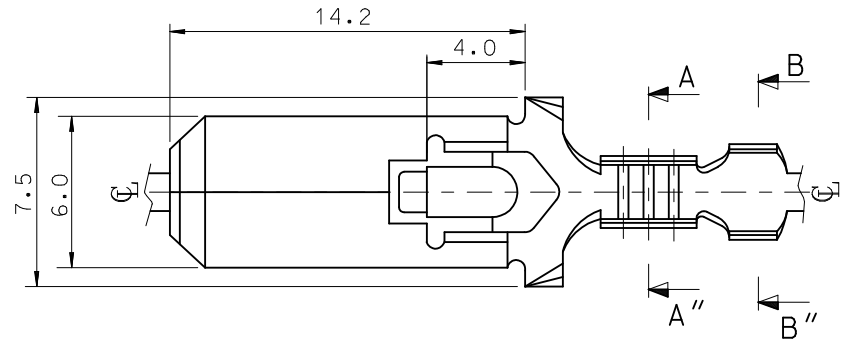
C

PROJECT NO.

SIMILAR ITEM

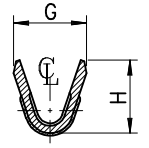
DWG. 10.

SD-35725-30\*0/18\*0/19\*0

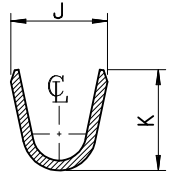


NOTES

1. MATERIAL: BRASS, 0.39mm THICK'
2. FINISH: UNPLATED (35725-3000/1800/1900/2000)  
POST-TIN PLATED (35725-3010/1810/1910/2010)
3. MATING RECEPTACLE TERMINAL: 35725-36\*0(L)  
35725-37\*0(M)  
35725-38\*0(S)



SECTION A-A''



SECTION B-B''

ENG.NO.	G	H	J	K	WIRE RANGE	SIZE
35725-30*0	2.85	2.9	3.8	4.0	AWG#22-#20	S
35725-18*0	3.4	3.6	5.2	5.2	AWG#18-#14	M
35725-19*0	5.3	4.5	6.2	5.6	AWG#14-#12	L
35725-20*0	5.3	4.5	6.6	4.8	AWG #18x2	XL

REVISED EC NO. KOR2000-0007 DRW:W.Y.YANG 00/02/08 CH'K: APPR:	DESCRIPTION MAJOR = 0 CRITICAL = 0	GENERAL TOLERANCES: (UNLESS SPECIFIED)		SCALE 5:1	DESIGN UNITS <input checked="" type="checkbox"/> mm <input type="checkbox"/> INCH	DIMENSIONS: <input type="checkbox"/> mm <input type="checkbox"/> INCH <input checked="" type="checkbox"/> mm ONLY	SHT REV	
		4 PLACES ±0. ±.	3 PLACES ±0. ±.	2 PLACES ±0.30 ±.	1 PLACE ±0.30 ±.	DRAWN BY & DATE W.Y.YANG 93/03/05	TITLE: .250 SLIP-ON TAB	
		ANGULAR: ± 3°				APPROVED BY & DATE C.W.LEE 93/03/05	MOLEX INCORPORATED KOREA	
		DRAFT WHERE APPLICABLE MUST REMAIN WITHIN DIMENSIONS				CAD FILENAME S7253000.DGN	MATERIAL NO. SEE CHART	DRAWING NO. SD-35725-***0
C	REV	THIS DRAWING CONTAINS INFORMATION THAT IS PROPRIETARY TO MOLEX INCORPORATED AND SHOULD NOT BE USED WITHOUT WRITTEN PERMISSION.				SIZE B		