



Chipsmall Limited consists of a professional team with an average of over 10 year of expertise in the distribution of electronic components. Based in Hongkong, we have already established firm and mutual-benefit business relationships with customers from,Europe,America and south Asia,supplying obsolete and hard-to-find components to meet their specific needs.

With the principle of “Quality Parts,Customers Priority,Honest Operation,and Considerate Service”,our business mainly focus on the distribution of electronic components. Line cards we deal with include Microchip,ALPS,ROHM,Xilinx,Pulse,ON,Everlight and Freescale. Main products comprise IC,Modules,Potentiometer,IC Socket,Relay,Connector.Our parts cover such applications as commercial,industrial, and automotives areas.

We are looking forward to setting up business relationship with you and hope to provide you with the best service and solution. Let us make a better world for our industry!



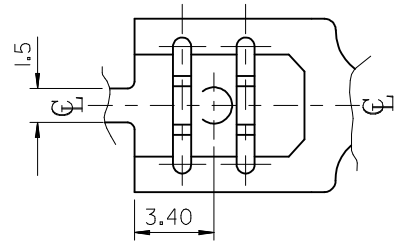
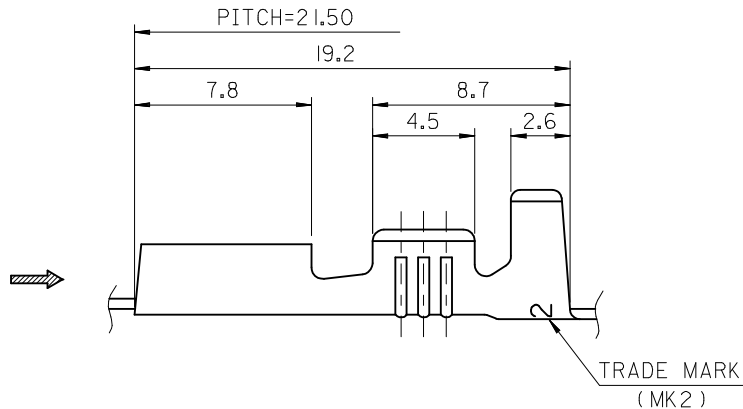
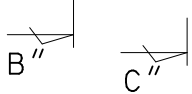
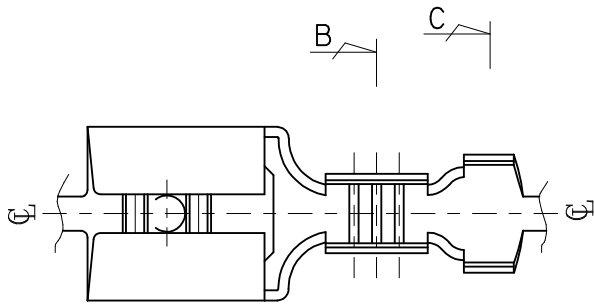
## Contact us

Tel: +86-755-8981 8866 Fax: +86-755-8427 6832

Email & Skype: info@chipsmall.com Web: www.chipsmall.com

Address: A1208, Overseas Decoration Building, #122 Zhenhua RD., Futian, Shenzhen, China





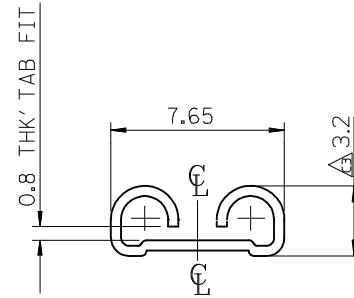
NOTES

1. MATERIAL : BRASS , 0.45mm THICKNESS
2. PART NO. AND FINISH

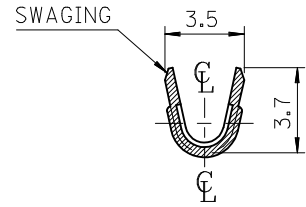
PART NO.	MATERIAL NO.	FINISH	TRADE MARK
35725-2400	357252400	UNPLATED	MK2
35725-2411	357252411	POST PLATED TIN	H MK2
35725-2410	357252410	POST PLATED TIN	MK2

H (TRADE MARK) : HIGH TENSION TIN-PLATED PRODUCT

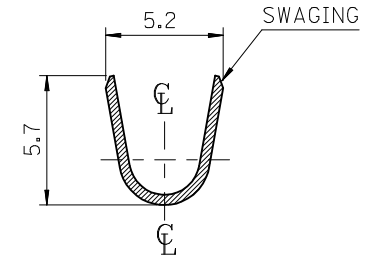
3. APPLICABLE WIRE RANGE : AWG #18 - #14
4. RECOMMENDED LENGTH OF WIRE STRIP IS 6.0-6.8mm



VIEW "A"



SEC' : B-B''



SEC' : C-C''

CHANGED DIMENSION EC NO: KTR2012-0066 DRWN:HIM00N 2012/04/25 CHKD:BCY00N 2012/04/25 APPR:DC_LISLE 2012/06/29	QUALITY SYMBOLS	GENERAL TOLERANCES (UNLESS SPECIFIED)	DIMENSION STYLE	SCALE	DESIGN UNITS	THIRD ANGLE PROJECTION	
	▽=0 ∇=0	mm INCH 4 PLACES ± --- ± --- 3 PLACES ± --- ± --- 2 PLACES ± 0.20 ± --- 1 PLACE ± 0.3 ± --- ANGULAR ± ---°	MM ONLY	4.5:1	METRIC		
	REV	DESCRIPTION	DRAWN BY	DATE	TITLE	.250 SLIP-ON RECEPTACLE TERMINAL (SLOT TYPE) MOLEX INCORPORATED	
	3		HIM00N	2012/04/25			
DRAFT WHERE APPLICABLE MUST REMAIN WITHIN DIMENSIONS			MATERIAL NO.	DOCUMENT NO.	SHEET NO.		
			SEE TABLE	SD-35725-002	1 OF 1		
			THIS DRAWING CONTAINS INFORMATION THAT IS PROPRIETARY TO MOLEX INCORPORATED AND SHOULD NOT BE USED WITHOUT WRITTEN PERMISSION				