



Chipsmall Limited consists of a professional team with an average of over 10 year of expertise in the distribution of electronic components. Based in Hongkong, we have already established firm and mutual-benefit business relationships with customers from,Europe,America and south Asia,supplying obsolete and hard-to-find components to meet their specific needs.

With the principle of “Quality Parts,Customers Priority,Honest Operation,and Considerate Service”,our business mainly focus on the distribution of electronic components. Line cards we deal with include Microchip,ALPS,ROHM,Xilinx,Pulse,ON,Everlight and Freescale. Main products comprise IC,Modules,Potentiometer,IC Socket,Relay,Connector.Our parts cover such applications as commercial,industrial, and automotives areas.

We are looking forward to setting up business relationship with you and hope to provide you with the best service and solution. Let us make a better world for our industry!



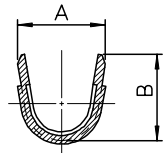
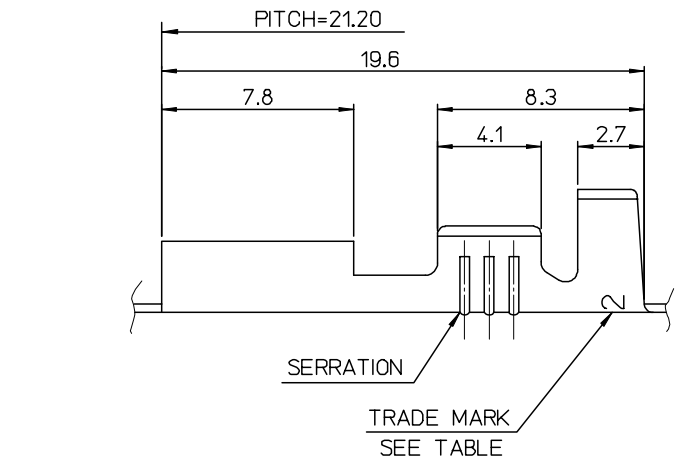
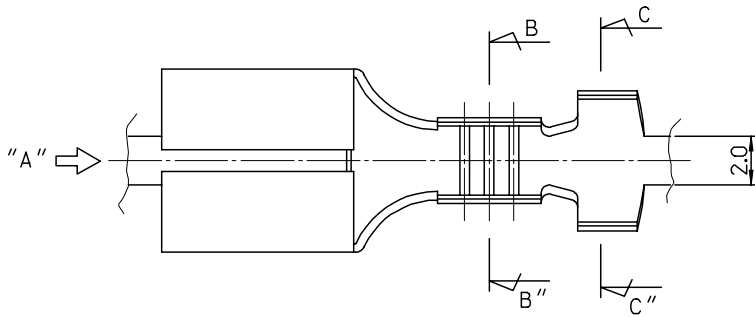
Contact us

Tel: +86-755-8981 8866 Fax: +86-755-8427 6832

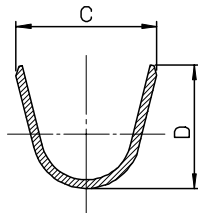
Email & Skype: info@chipsmall.com Web: www.chipsmall.com

Address: A1208, Overseas Decoration Building, #122 Zhenhua RD., Futian, Shenzhen, China





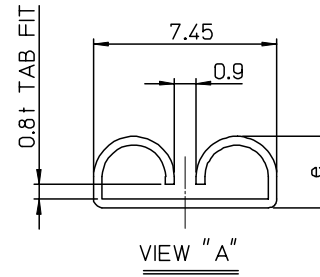
SECTION B-B''



SECTION C-C''

NOTES

1. MATERIAL : BRASS, 0.35mm THICKNESS
2. RECOMMENDED LENGTH OF WIRE STRIP IS 5.2-5.8 mm
3. FINISH, TENSION : SEE TABLE



| ENG. NO. | a | b | c | d | e | WIRE RANGE | PLATED | TRADE MARK | TENSION |
|------------|------|-----|-----|-----|------|-------------|--------------------|------------|------------------|
| 35725-3600 | 5.2 | 4.6 | 6.3 | 6.3 | | AWG #14-#12 | (UNPLATED) | MK2 | STANDARD TENSION |
| 35725-3700 | 3.5 | 3.5 | 5.7 | 5.0 | 2.9 | AWG #18-#14 | | | |
| 35725-3800 | 2.85 | 2.9 | 3.8 | 3.8 | | AWG #22-#20 | | | |
| 35725-3610 | 5.2 | 4.6 | 6.3 | 6.3 | | AWG #14-#12 | (POST-TIN PLATING) | | |
| 35725-3710 | 3.5 | 3.5 | 5.7 | 5.0 | 2.9 | AWG #18-#14 | | | |
| 35725-3810 | 2.85 | 2.9 | 3.8 | 3.8 | | AWG #22-#20 | | | |
| 35725-3601 | 5.2 | 4.6 | 6.3 | 6.3 | | AWG #14-#12 | (UNPLATED) | L MK2 | LOW TENSION |
| 35725-3701 | 3.5 | 3.5 | 5.7 | 5.0 | 2.95 | AWG #18-#14 | | | |
| 35725-3801 | 2.85 | 2.9 | 3.8 | 3.8 | | AWG #22-#20 | | | |

| | |
|---------------------|-------------|
| REVISED | DESCRIPTION |
| EC NO: KOR2008-0030 | |
| DRWN: JHPARK01 | 2007/09/10 |
| CHKD: W. YANG | 2007/09/10 |
| APPR: YUNSIKKIM | 2007/09/10 |
| A | REV |

| | |
|--|----------------------|
| QUALITY SYMBOLS | ▽=0 |
| | △=0 |
| GENERAL TOLERANCES (UNLESS SPECIFIED) | 4 PLACES ± --- ± --- |
| | 3 PLACES ± --- ± --- |
| | 2 PLACES ± 0.3 ± --- |
| | 1 PLACE ± 0.3 ± --- |
| | ANGULAR ± 1 ° |
| DRAFT WHERE APPLICABLE MUST REMAIN WITHIN DIMENSIONS | SIZE A3 |

| | |
|-------------------------|---------------|
| DIMENSION STYLE MM ONLY | |
| DRAWN BY JS.KANG | DATE 93/04/27 |
| CHECKED BY BK.CHOI | DATE 93/04/27 |
| APPROVED BY CW.LEE | DATE 93/04/27 |
| MATERIAL NO. | DOCUMENT NO. |
| SEE TABLE | |

| | | |
|---|---------------------|------------------------|
| SCALE 5:1 | DESIGN UNITS METRIC | THIRD ANGLE PROJECTION |
| TITLE .250 SLIP-ON RECEPTACLE TERMINAL | | |
| MOLEX INCORPORATED | | |
| DOCUMENT NO. SD-35725-3**0 | | SHEET NO. 1 OF 01 |
| THIS DRAWING CONTAINS INFORMATION THAT IS PROPRIETARY TO MOLEX INCORPORATED AND SHOULD NOT BE USED WITHOUT WRITTEN PERMISSION | | |