



Chipsmall Limited consists of a professional team with an average of over 10 year of expertise in the distribution of electronic components. Based in Hongkong, we have already established firm and mutual-benefit business relationships with customers from,Europe,America and south Asia,supplying obsolete and hard-to-find components to meet their specific needs.

With the principle of "Quality Parts,Customers Priority,Honest Operation,and Considerate Service",our business mainly focus on the distribution of electronic components. Line cards we deal with include Microchip,ALPS,ROHM,Xilinx,Pulse,ON,Everlight and Freescale. Main products comprise IC,Modules,Potentiometer,IC Socket,Relay,Connector.Our parts cover such applications as commercial,industrial, and automotives areas.

We are looking forward to setting up business relationship with you and hope to provide you with the best service and solution. Let us make a better world for our industry!



Contact us

Tel: +86-755-8981 8866 Fax: +86-755-8427 6832

Email & Skype: info@chipsmall.com Web: www.chipsmall.com

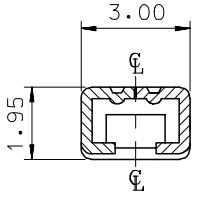
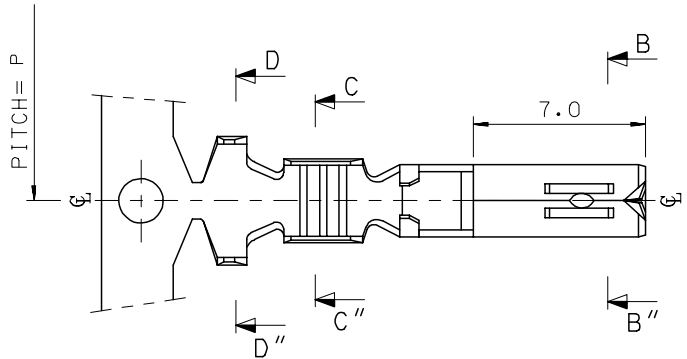
Address: A1208, Overseas Decoration Building, #122 Zhenhua RD., Futian, Shenzhen, China



10 9 8 7 6 5 4 3 2 1

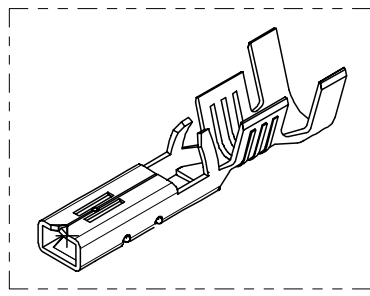
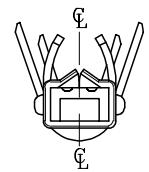
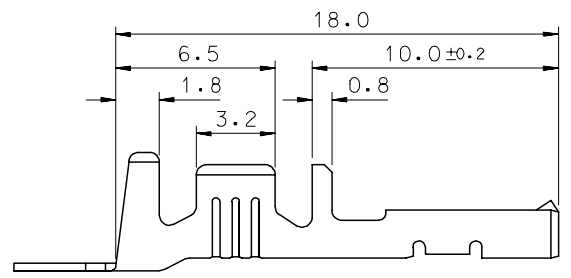
F
E
D
C
B
A

F
E
D
C
B
A

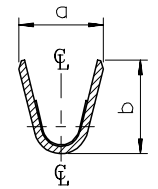
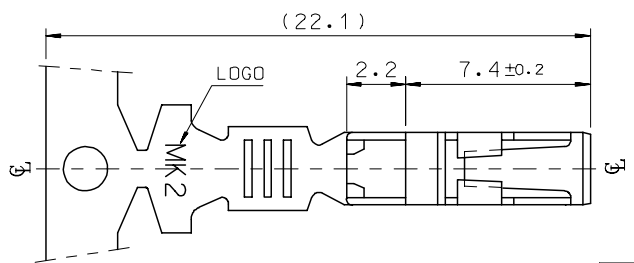


SEC' : B-B''

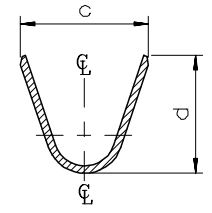
- NOTES
1. MATERIAL : PHOSPHOR BRONZE
0.3mm THICKNESS
 2. FINISH : PRE-PLATED TIN
 3. RECOMMENDED LENGTH OF WIRE STRIP IS 4.0-4.8mm.



ISOMETRIC VIEW



SEC' : C-C''



SEC' : D-D''

MATERIAL NO	ENG. No.	AWG	a	b	c	d	P
357480210	35748-0210	#18-#14	3.4	3.8	5.2	4.8	12.0
357480110	35748-0110	#22-#20	2.85	2.8	4.2	4.0	10.6
357480410	35748-0410	#24	2.2	1.75	3.85	3.5	10.6

REVISED
EC NO: KOR2008-0087
DRWN: JHPARK01 2007/11/15
CHKD: W. YANG 2007/11/15
APPR: YUNSIKKIM 2007/11/15

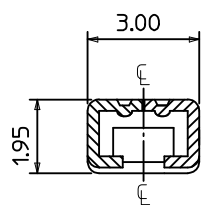
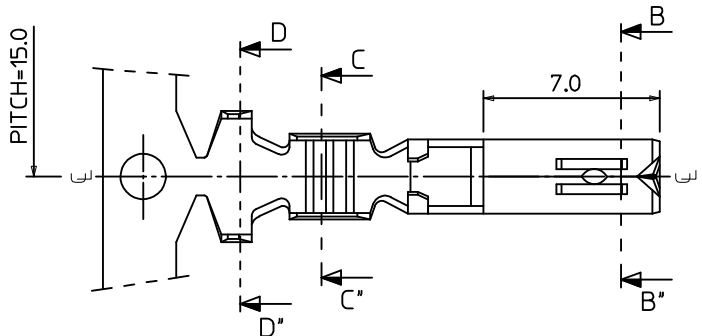
QUALITY SYMBOLS
▽=0
▽=0

	GENERAL TOLERANCES (UNLESS SPECIFIED)	
	mm	INCH
4 PLACES	± .005	± .0004
3 PLACES	± .005	± .0004
2 PLACES	± 0.01	± .0004
1 PLACE	± 0.02	± .0008
ANGULAR ± 1 °		

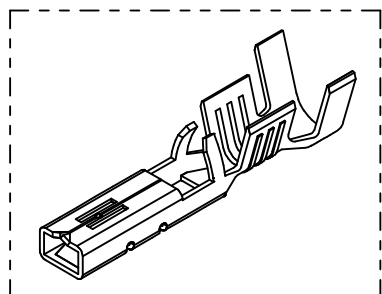
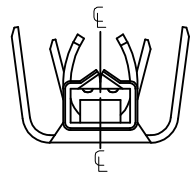
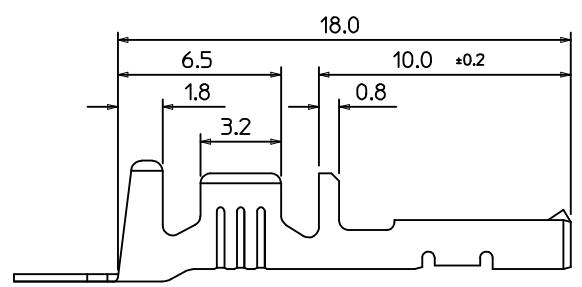
DIMENSION STYLE		SCALE		DESIGN UNITS		THIRD ANGLE PROJECTION	
MM ONLY	DATE	1:1	METRIC				
DRAWN BY	BK. CHOI	DATE	1992/11/17	TITLE		.070 FEMALE TERMINAL (B-TYPE)	
CHECKED BY	BK. CHOI	DATE	1992/11/17	APPROVED BY		CW. LEE	
APPROVED BY	CW. LEE	DATE	1992/11/17	MATERIAL NO.		SD-35748-001	
DRAFT WHERE APPLICABLE MUST REMAIN WITHIN DIMENSIONS		SEE TABLE		DOCUMENT NO.		SHEET NO.	

MOLEX INCORPORATED
SD-35748-001
1 OF 01

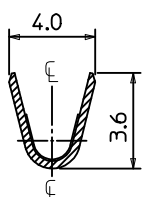
9 8 7 6 5 4 3 2 1



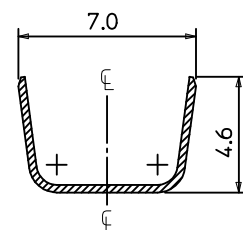
SEC' : B-B'



ISOMETRIC VIEW



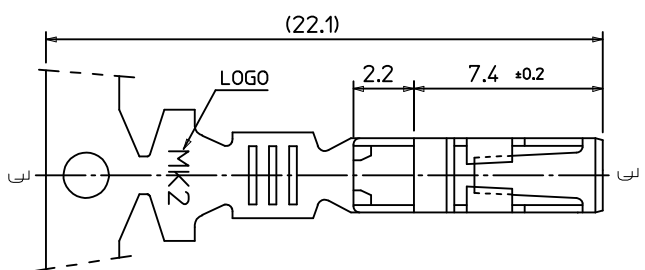
SEC' : C-C'



SEC' : D-D'

NOTES

- 1. MATERIAL : PHOSPHOR BRONZE
0.3mm THICKNESS
- 2. FINISH : PRE-PLATED TIN
- 3. RECOMMENDED LENGTH OF WIRE STRIP IS 4.0-4.8mm.
- ④ 4. APPLICABLE WIRE SIZE : AWG #20+#20
AWG #20+#18
AWG #18+#18



REVISED EC NO: KOR2016-0060 DRWN: JSSHIN 2015/12/24 CHKD: SHCHU 2015/12/28 APPR: YSK1M02 2015/12/30	DESCRIPTION 1	QUALITY SYMBOLS	GENERAL TOLERANCES (UNLESS SPECIFIED)		DIMENSION STYLE MM ONLY		SCALE 5:1	DESIGN UNITS METRIC	THIRD ANGLE PROJECTION	
		$\nabla=0$ $\sphericalangle=0$	mm	INCH	DRAWN BY BKCH01	DATE 1992/11/17	TITLE .070 FEMALE TERMINAL (B-TYPE)			
		4 PLACES	± ---	± ---	CHECKED BY BKCH01	DATE 1992/11/17	MATERIAL NO. 357480310			
		3 PLACES	± ---	± ---	APPROVED BY YSK1M02	DATE 2015/12/30	DOCUMENT NO. SD-35748-003		SHEET NO. 1 OF 1	
		2 PLACES	± 0.3	± ---	MATERIAL NO. 357480310					
		1 PLACE	± 0.3	± ---	DOCUMENT NO. SD-35748-003					
		ANGULAR ± 1 °		THIS DRAWING CONTAINS INFORMATION THAT IS PROPRIETARY TO MOLEX INCORPORATED AND SHOULD NOT BE USED WITHOUT WRITTEN PERMISSION						
		DRAFT WHERE APPLICABLE MUST REMAIN WITHIN DIMENSIONS								