



Chipsmall Limited consists of a professional team with an average of over 10 year of expertise in the distribution of electronic components. Based in Hongkong, we have already established firm and mutual-benefit business relationships with customers from,Europe,America and south Asia,supplying obsolete and hard-to-find components to meet their specific needs.

With the principle of “Quality Parts,Customers Priority,Honest Operation,and Considerate Service”,our business mainly focus on the distribution of electronic components. Line cards we deal with include Microchip,ALPS,ROHM,Xilinx,Pulse,ON,Everlight and Freescale. Main products comprise IC,Modules,Potentiometer,IC Socket,Relay,Connector.Our parts cover such applications as commercial,industrial, and automotives areas.

We are looking forward to setting up business relationship with you and hope to provide you with the best service and solution. Let us make a better world for our industry!



Contact us

Tel: +86-755-8981 8866 Fax: +86-755-8427 6832

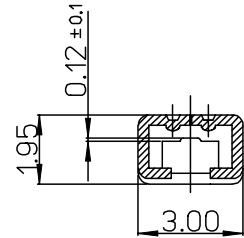
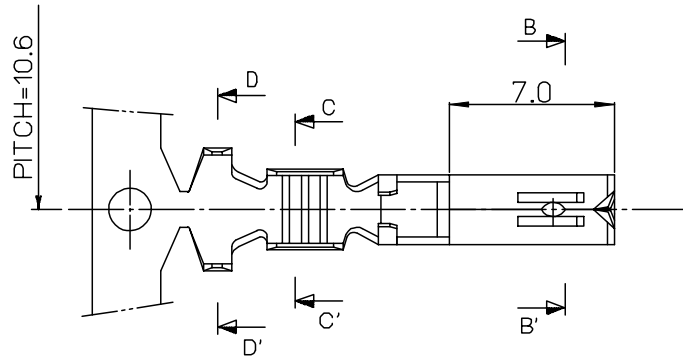
Email & Skype: info@chipsmall.com Web: www.chipsmall.com

Address: A1208, Overseas Decoration Building, #122 Zhenhua RD., Futian, Shenzhen, China

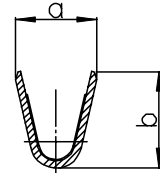
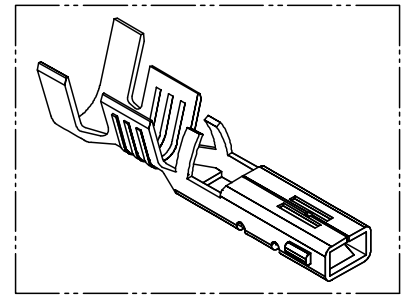


10 9 8 7 6 5 4 3 2 1

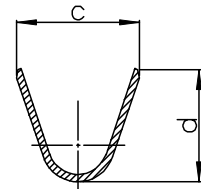
F
E
D
C
B
A



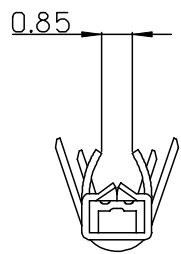
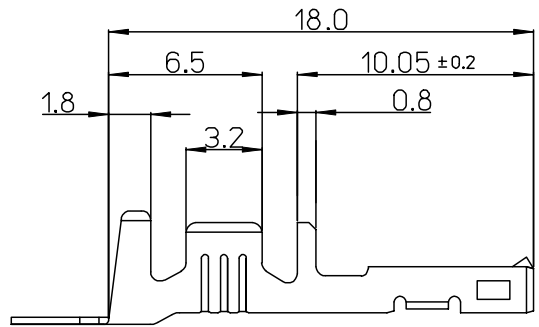
SECTION: B-B'



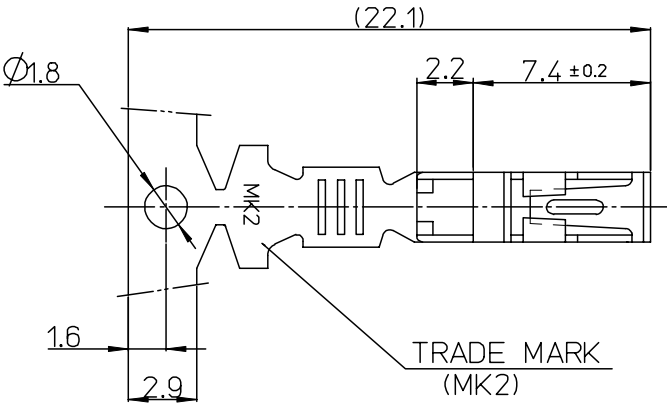
SECTION: C-C'



SECTION: D-D'



- NOTES
1. MATERIAL : PHOSPHOR BRONZE, 0.3mm THICKNESS
 2. FINISHS: PRE-PLATED TIN(Sn)
 3. USE WITH : 35745 AND 35747 MALE TERMINALS
 4. RECOMMENDED LENGTH OF WIRE STRIP IS 4.0-4.8mm.



MATERIAL NO	ENG NO	AWG	a	b	c	d
357480111	35748-0111	#22 - #20	2.85	2.8	4.2	4.0
357480411	35748-0411	#24	2.2	1.75	3.85	3.5

NEW RELEASE EC NO: KOR2008-0087 DRWN: JHPARK01 2007/11/15 CHKD: WY. YANG 2007/11/15 APPR: YUNSIKKIM 2007/11/15	QUALITY SYMBOLS	GENERAL TOLERANCES (UNLESS SPECIFIED)	DIMENSION STYLE	SCALE	DESIGN UNITS	THIRD ANGLE PROJECTION
	▽=0 ▽=0	mm INCH 4 PLACES ± --- ± --- 3 PLACES ± --- ± --- 2 PLACES ± 0.3 ± --- 1 PLACE ± 0.25 ± --- ANGULAR ± 1 °	MM ONLY	5:1	METRIC	
	DESCRIPTION		DRAWN BY	DATE	TITLE	
			JB. JIN	2004/05/10	070 FEMALE TERMINAL DIMPLE B-TYPE	
		APPROVED BY	DATE	MOLEX INCORPORATED		
		CW. LEE	2004/05/10	SD-35748-002		
		DRAFT WHERE APPLICABLE MUST REMAIN WITHIN DIMENSIONS	SEE TABLE	SD-35748-002		SHEET NO. 1 OF 01
			SIZE A3	THIS DRAWING CONTAINS INFORMATION THAT IS PROPRIETARY TO MOLEX INCORPORATED AND SHOULD NOT BE USED WITHOUT WRITTEN PERMISSION		

9 8 7 6 5 4 3 2 1