



Chipsmall Limited consists of a professional team with an average of over 10 year of expertise in the distribution of electronic components. Based in Hongkong, we have already established firm and mutual-benefit business relationships with customers from,Europe,America and south Asia,supplying obsolete and hard-to-find components to meet their specific needs.

With the principle of “Quality Parts,Customers Priority,Honest Operation,and Considerate Service”,our business mainly focus on the distribution of electronic components. Line cards we deal with include Microchip,ALPS,ROHM,Xilinx,Pulse,ON,Everlight and Freescale. Main products comprise IC,Modules,Potentiometer,IC Socket,Relay,Connector.Our parts cover such applications as commercial,industrial, and automotives areas.

We are looking forward to setting up business relationship with you and hope to provide you with the best service and solution. Let us make a better world for our industry!



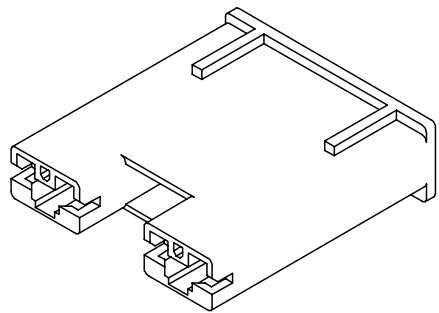
## Contact us

Tel: +86-755-8981 8866 Fax: +86-755-8427 6832

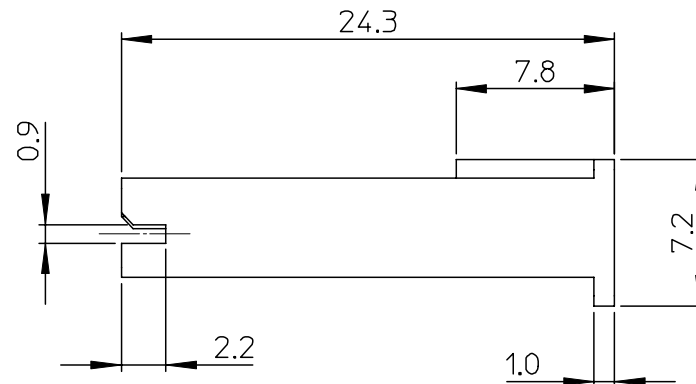
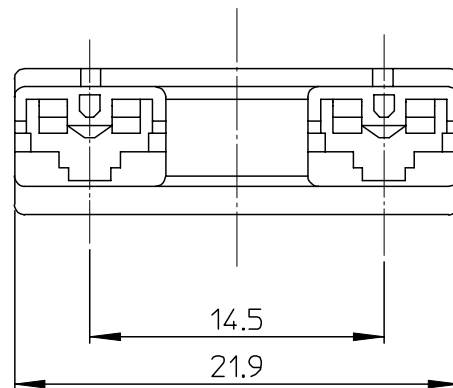
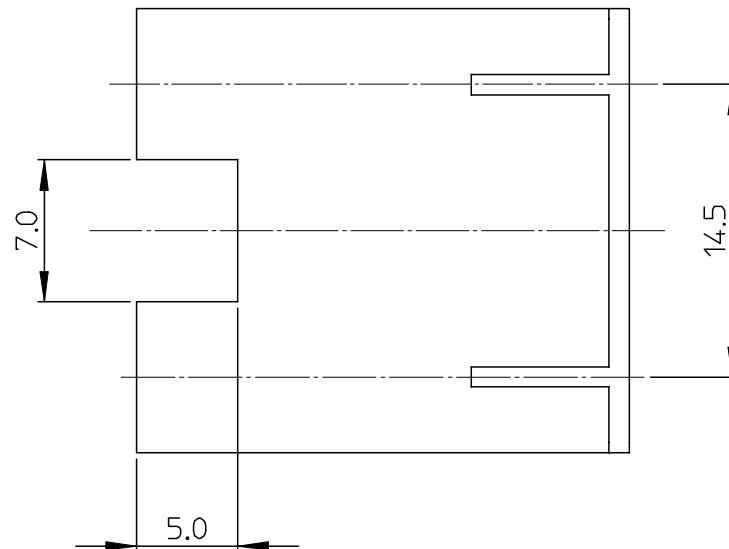
Email & Skype: [info@chipsmall.com](mailto:info@chipsmall.com) Web: [www.chipsmall.com](http://www.chipsmall.com)

Address: A1208, Overseas Decoration Building, #122 Zhenhua RD., Futian, Shenzhen, China





ISOMETRIC VIEW

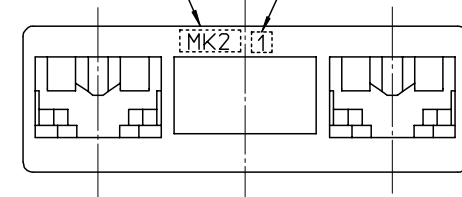




## NOTES

1. MATERIAL : POLYESTER(PBT)  
NATURAL COLOR : 35817-0270  
BLUE COLOR : 35817-0274
2. APPLICABLE TERMINAL : 35068-9702/9802/9902

TRADE MARK  
(MK2)

CAVITY NO.



NEW RELEASED ECN NO.ROR2003-0060 DRWN: C.B.CHIN 03/06/03 CHK: W.Y.YANG APPR: C.W.LEE	DESCRIPTION	QUALITY SYMBOLS  MAJOR = 0  CRITICAL = 0	GENERAL TOLERANCES: (UNLESS SPECIFIED)		SCALE 4:1	DESIGN UNITS <input checked="" type="checkbox"/> mm <input type="checkbox"/> INCH	 THIRD ANGLE PROJECTION	<input type="checkbox"/> mm <input type="checkbox"/> INCH <input type="checkbox"/> INCH <input type="checkbox"/> mm	<input checked="" type="checkbox"/> mm ONLY <input type="checkbox"/> ONLY	REVISE ON CAD ONLY														
			<table><tr><td></td><td>mm</td><td>INCH</td></tr><tr><td>4 PLACES</td><td>±0.</td><td>±.</td></tr><tr><td>3 PLACES</td><td>±0.</td><td>±.</td></tr><tr><td>2 PLACES</td><td>±0.30</td><td>±.</td></tr><tr><td>1 PLACE</td><td>±0.30</td><td>±.</td></tr></table>		mm	INCH	4 PLACES	±0.	±.	3 PLACES	±0.	±.	2 PLACES	±0.30	±.	1 PLACE	±0.30	±.	DRAWN BY & DATE C.B.CHIN 03/03/31		TITLE: .187 MP-LOCK HOUSING-2P(14.5mm PITCH) ( FOR CAPACITOR)			
					mm	INCH																		
				4 PLACES	±0.	±.																		
				3 PLACES	±0.	±.																		
2 PLACES	±0.30	±.																						
1 PLACE	±0.30	±.																						
CHECKED BY & DATE W.Y.YANG 03/03/31																								
APPROVED BY & DATE C.W.LEE 03/03/31		 MOLEX INCORPORATED																						
ANGULAR: ± °						CAD FILENAME S358170270.M	MATERIAL NO. SEE NOTES	DRAWING NO. SD-35817-002	SHEET NO. 1 OF 1															
A	REV	DRAFT WHERE APPLICABLE MUST REMAIN WITHIN DIMENSIONS		THIS DRAWING CONTAINS INFORMATION THAT IS PROPRIETARY TO MOLEX INCORPORATED AND SHOULD NOT BE USED WITHOUT WRITTEN PERMISSION.						SIZE B														