



Chipsmall Limited consists of a professional team with an average of over 10 year of expertise in the distribution of electronic components. Based in Hongkong, we have already established firm and mutual-benefit business relationships with customers from,Europe,America and south Asia,supplying obsolete and hard-to-find components to meet their specific needs.

With the principle of “Quality Parts,Customers Priority,Honest Operation,and Considerate Service”,our business mainly focus on the distribution of electronic components. Line cards we deal with include Microchip,ALPS,ROHM,Xilinx,Pulse,ON,Everlight and Freescale. Main products comprise IC,Modules,Potentiometer,IC Socket,Relay,Connector.Our parts cover such applications as commercial,industrial, and automotives areas.

We are looking forward to setting up business relationship with you and hope to provide you with the best service and solution. Let us make a better world for our industry!



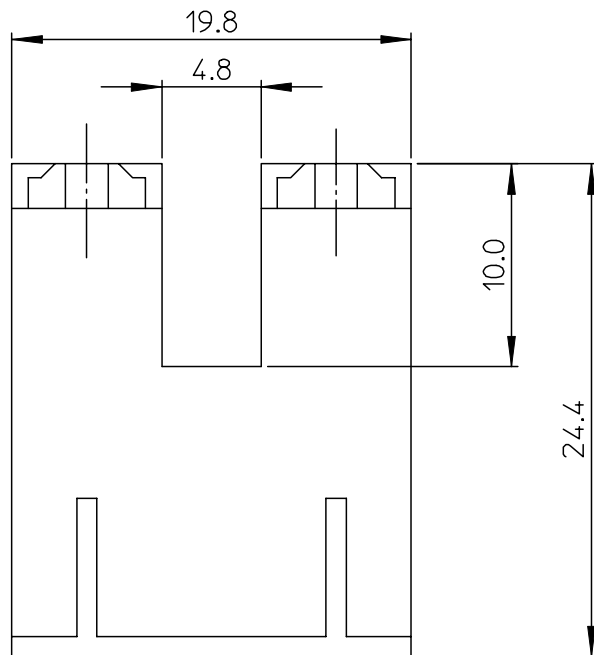
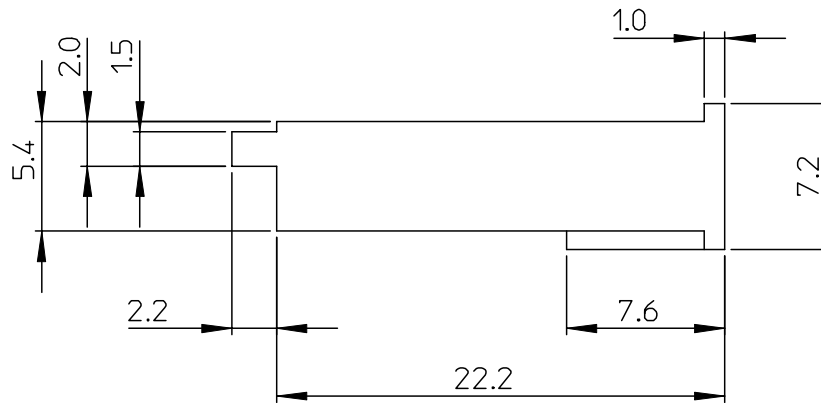
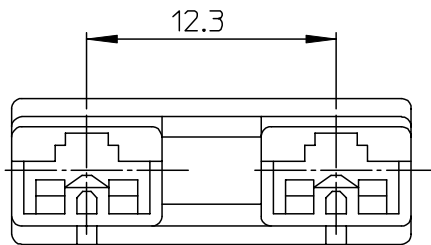
Contact us

Tel: +86-755-8981 8866 Fax: +86-755-8427 6832

Email & Skype: info@chipsmall.com Web: www.chipsmall.com

Address: A1208, Overseas Decoration Building, #122 Zhenhua RD., Futian, Shenzhen, China





NOTES

1. MATERIAL

ENG NO.	MATERIAL	COLOR
35817-0280	NYLON	NATURAL (WHITE)
35817-0290	POLYESTER(PBT)	
35817-9290	PBT/PC	

2. APPLICABLE TERMINAL : 35068-9702/9802/9902

DO NOT SCALE DRAWING
DIMENSION IN METRIC

DWG. NO.
SD-35817-001

SIMILAR ITEM

PROJECT NO.

B

C

F

E

D

C

B

A

REVISED ECN NO. KOR 2007-0006 DRWN: J.B.JIN 06/06/09 CHK: W.Y.YANG APPR: S.H.CHOI	DESCRIPTION MAJOR = 0 CRITICAL = 0	QUALITY SYMBOLS		GENERAL TOLERANCES: (UNLESS SPECIFIED)	SCALE 4:1	DESIGN UNITS <input checked="" type="checkbox"/> mm <input type="checkbox"/> INCH	DIMENSIONS: <input type="checkbox"/> mm <input type="checkbox"/> INCH <input checked="" type="checkbox"/> mm ONLY		SHT	REV	
		4 PLACES	±0.	±-	DRAWN BY & DATE W.Y.YANG 98/07/29	TITLE: .187 MP-LOCK HOUSING-2P (CAPACITOR)					
		3 PLACES	±0.	±-	CHECKED BY & DATE B.K.CHOI 98/07/29	MOLEX INCORPORATED					
		2 PLACES	±0.30	±-	APPROVED BY & DATE C.W.LEE 98/07/29	CAD FILENAME S35817AA.MI	MATERIAL NO. SEE TABLE	DRAWING NO. SD-35817-001	SHEET NO. 1 OF 1	KOREA	
1 PLACE	±0.30	±-	ANGULAR: ± °	THIS DRAWING CONTAINS INFORMATION THAT IS PROPRIETARY TO MOLEX INCORPORATED AND SHOULD NOT BE USED WITHOUT WRITTEN PERMISSION.					SIZE B	MX-A3	
B	REV	DRAFT WHERE APPLICABLE MUST REMAIN WITHIN DIMENSIONS									

8

7

6

5

4

3

2

KOREA

MX-A3