



Chipsmall Limited consists of a professional team with an average of over 10 year of expertise in the distribution of electronic components. Based in Hongkong, we have already established firm and mutual-benefit business relationships with customers from,Europe,America and south Asia,supplying obsolete and hard-to-find components to meet their specific needs.

With the principle of “Quality Parts,Customers Priority,Honest Operation,and Considerate Service”,our business mainly focus on the distribution of electronic components. Line cards we deal with include Microchip,ALPS,ROHM,Xilinx,Pulse,ON,Everlight and Freescale. Main products comprise IC,Modules,Potentiometer,IC Socket,Relay,Connector.Our parts cover such applications as commercial,industrial, and automotives areas.

We are looking forward to setting up business relationship with you and hope to provide you with the best service and solution. Let us make a better world for our industry!



Contact us

Tel: +86-755-8981 8866 Fax: +86-755-8427 6832

Email & Skype: info@chipsmall.com Web: www.chipsmall.com

Address: A1208, Overseas Decoration Building, #122 Zhenhua RD., Futian, Shenzhen, China



10

9

8

7

6

5

4

3

2

1

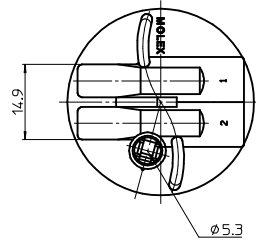
NOTES

1. FOCAL LENGTH ±31.8mm
2. PRODUCT SPECIFICATION: PS-35842-001
3. APPLICABLE BULB CAP: P21/5WBAY150
4. MATES WITH

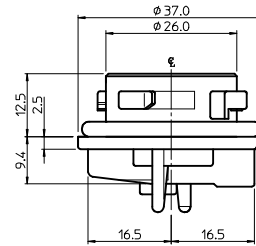
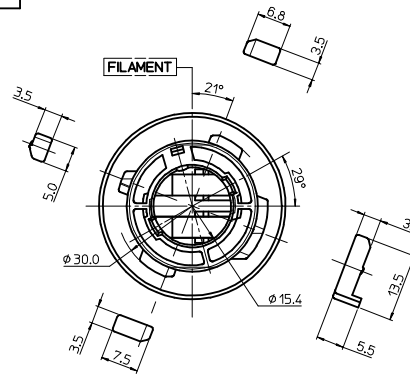
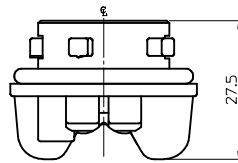
<PART LIST>

NO.	DESCRIPTION	MATERIAL	USAGE	REMARK
①	DOUBLE SOCKET	PA66 M/F	1	A TYPE
②	SEAL GASKET	NBR	1	BLACK

NO.	DESCRIPTION	MATERIAL	ORDER NO.	REMARK
③	POSITIVE TERMINAL	PHOSPHOR BRONZE	35464-8000	UNPLATED
④	POSITIVER WIRE SEAL	SILICONE	35903-0096	BROWN
⑤	EARTH TERMINAL	PHOSPHOR BRONZE	35465-8000	UNPLATED
⑥	EARTH WIRE SEAL	SILICONE	35903-0106	BLUE



VIEW "A"

↑
"A"

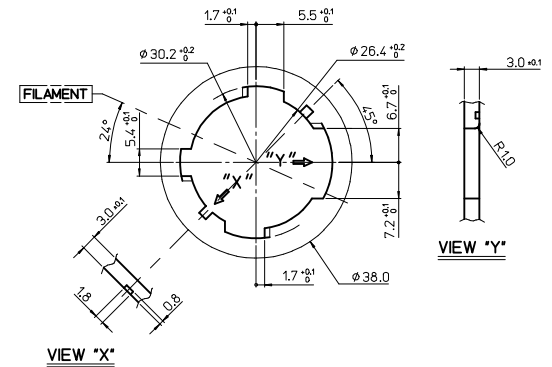
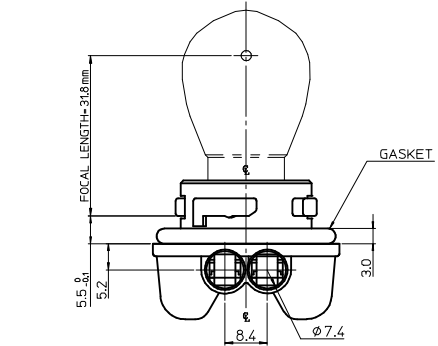
<TABLE 1>

MATERIAL NO.	ORDER NO.	COLOR
358421301	35842-1301	BLACK
358421305	35842-1305	GRAY
358421306	35842-1306	WHITE
358421307	35842-1307	BROWN

GENERAL TOLERANCES
(UNLESS SPECIFIED)

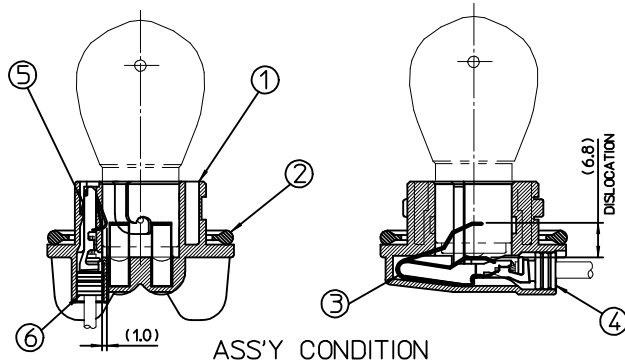
	mm	INCH
4 PLACES	± ---	± ---
3 PLACES	± ---	± ---
2 PLACES	± 0.15	± ---
1 PLACE	± 0.25	± ---

ANGULAR ± 2 °

DRAFT WHERE APPLICABLE
MUST REMAIN
WITHIN DIMENSIONS

VIEW "X"

VIEW "Y"

MOUNTING INTERFACE
(MI-4)

ASS'Y CONDITION

CHANGED OF NOTES

EC NO: KOR2010-0023
 2009/08/18
 DRWNEOKIM
 2009/08/19
 CHKD-BCYOON
 2009/08/20
 APPR:YUNSIKKIM

QUALITY SYMBOLS
 ▽=0
 ▽=0
 DESCRIPTION
 REV

DIMENSION STYLE
MM ONLY

DRAWN BY	DATE
YSIKKIM	1999/05/13
CHECKED BY	DATE
BKCHOI	1999/05/14
APPROVED BY	DATE
CWLEE	1999/05/14

MATERIAL NO. SEE TABLE 1

SIZE
A3SCALE
1:1DESIGN UNITS
METRICTHIRD ANGLE
PROJECTIONSEALED PT BULB SOCKET
DOUBLE HOUSING ASS'Y
(A-TYPE)

MOLEX INCORPORATED

DOCUMENT NO.

SD-35842-001

SHEET NO.

1 OF 1

THIS DRAWING CONTAINS INFORMATION THAT IS PROPRIETARY TO MOLEX INCORPORATED AND SHOULD NOT BE USED WITHOUT WRITTEN PERMISSION

9

8

7

6

5

4

3

2

1