



Chipsmall Limited consists of a professional team with an average of over 10 year of expertise in the distribution of electronic components. Based in Hongkong, we have already established firm and mutual-benefit business relationships with customers from,Europe,America and south Asia,supplying obsolete and hard-to-find components to meet their specific needs.

With the principle of "Quality Parts,Customers Priority,Honest Operation,and Considerate Service",our business mainly focus on the distribution of electronic components. Line cards we deal with include Microchip,ALPS,ROHM,Xilinx,Pulse,ON,Everlight and Freescale. Main products comprise IC,Modules,Potentiometer,IC Socket,Relay,Connector.Our parts cover such applications as commercial,industrial, and automotives areas.

We are looking forward to setting up business relationship with you and hope to provide you with the best service and solution. Let us make a better world for our industry!



Contact us

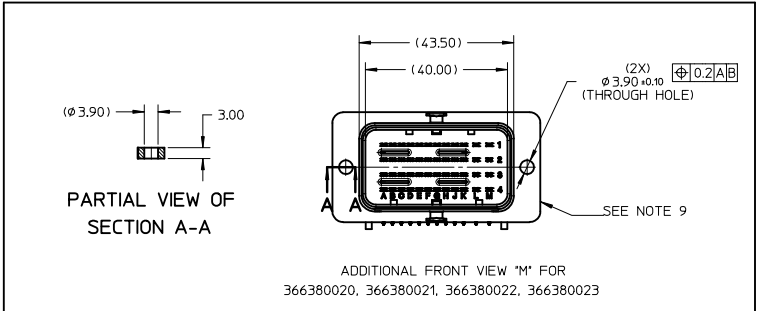
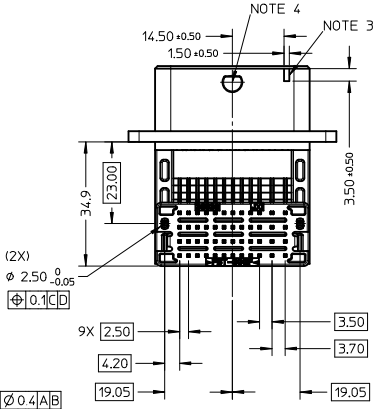
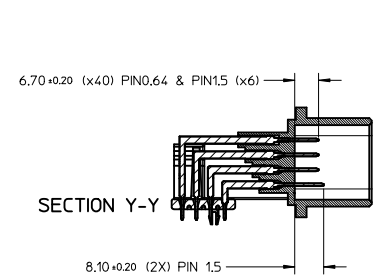
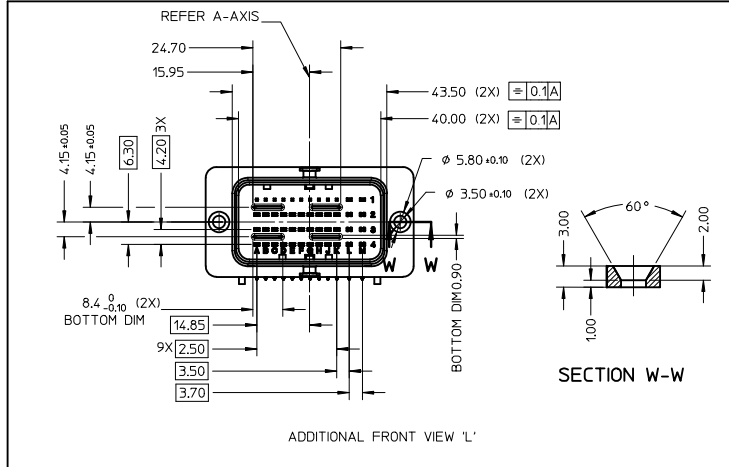
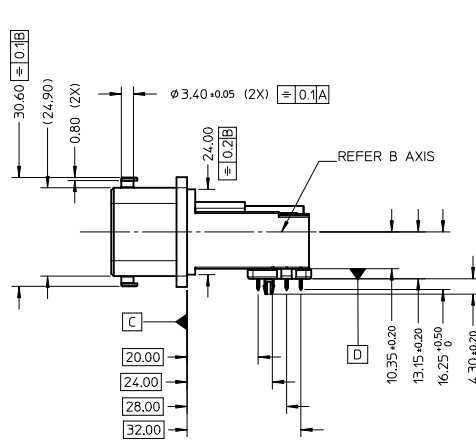
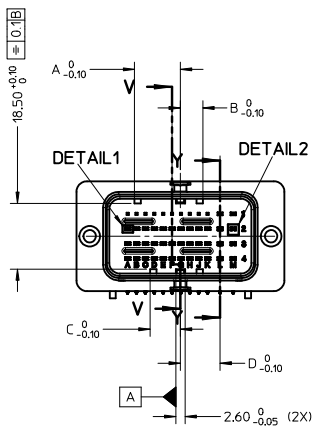
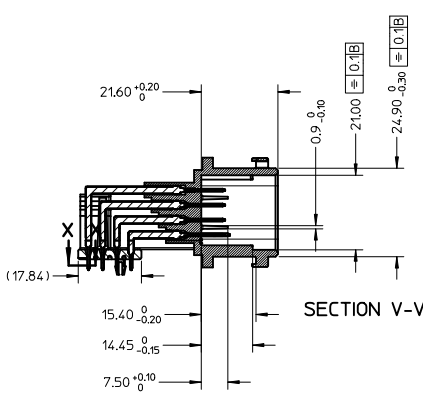
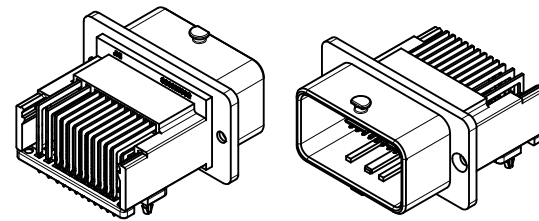
Tel: +86-755-8981 8866 Fax: +86-755-8427 6832

Email & Skype: info@chipsmall.com Web: www.chipsmall.com

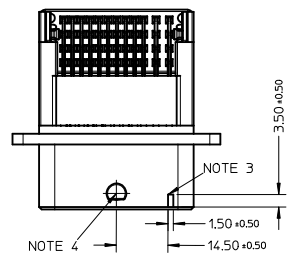
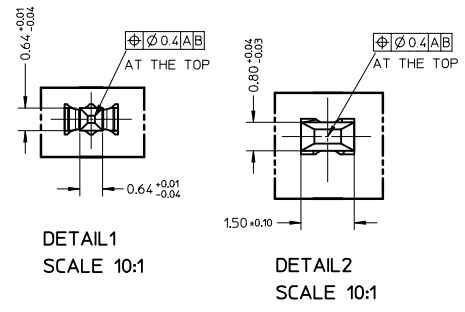
Address: A1208, Overseas Decoration Building, #122 Zhenhua RD., Futian, Shenzhen, China



| | | | | |
|--------|--------------------------|-------------|-------------------------|-------------------------------------|
| 4 | 1 | GRID PLATE | PBT 30% GLASS FILLED | BLACK |
| 3 | 1 | HOUSING | | BLACK |
| 2 | SEE SHEET 2 TABLE 'A' | 1.5 | CuZn30 | NICKEL UNDERCOAT: 1.3µM TO 2.2µM |
| 1 | SEE SHEET 2 TABLE 'A' | 0.64 | CuZn30 | MATTE TIN OVERCOAT: 4µM TO 5µM |
| SL NO. | QTY | DESIGNATION | MATERIAL | FINISH |



| | | |
|-----------|-----------|-----------|
| D | 6.30 | 12.90 |
| C | 8.50 | 12.90 |
| B | 6.30 | 10.70 |
| A | 12.90 | 8.50 |
| DIMENSION | 366380002 | 366380003 |
| | 366380004 | 366380005 |
| | 366380006 | 366380007 |
| | 366380008 | 366380009 |
| | 366380020 | 366380021 |
| | 366380022 | 366380023 |
| | (BLACK) | (BROWN) |
| | MOLEX PN | |

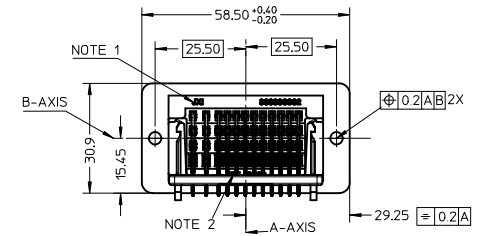
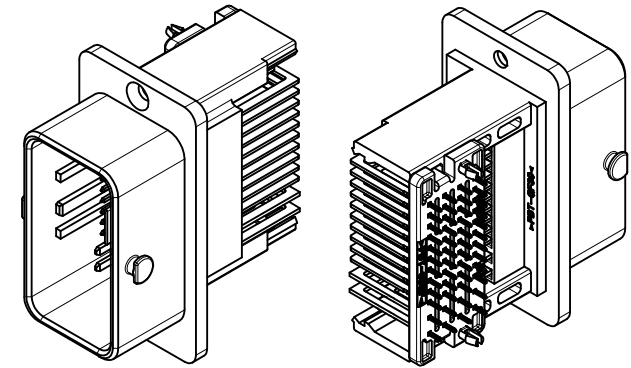


RoHS COMPLIANT

| | | | | | | | | | |
|---|-------------------------------|---|------|-------------------------------|--------------------|--|------------------------|------------------------|--|
| ENTER DESCRIPTION EC NO: I2012-0265 DRWN:VUTTARKAR 2012/04/09 CHKD: APPR:KPRASAD 2012/04/09 | QUALITY SYMBOLS ▽=0 ▽=0 | GENERAL TOLERANCES (UNLESS SPECIFIED) | | DIMENSION STYLE MM ONLY | | SCALE 1:1 | DESIGN UNITS METRIC | THIRD ANGLE PROJECTION | |
| | | mm | INCH | DRAWN BY ROOPESH | DATE 08/05/2006 | TITLE CMC HEADER 48/48WAY AND 48/36WAY T3 INTERFACE | MOLEX INCORPORATED | | |
| 11 | REVISION | DRAFT WHERE APPLICABLE MUST REMAIN WITHIN DIMENSIONS | | MATERIAL NO. SEE TABLE 'A' | | DOCUMENT NO. SD-36638-002 | | SHEET NO. 1 OF 3 | |
| | | THIS DRAWING CONTAINS INFORMATION THAT IS PROPRIETARY TO MOLEX INCORPORATED AND SHOULD NOT BE USED WITHOUT WRITTEN PERMISSION | | | | | | | |

TABLE 'A'

| | | | | | | | | |
|-----------------|---|---------------|---------------------------|---------------------------------|-------------|------|-----------------|--|
| ASSY CMC HEADER | ASSY CMC 48 WAY 48 CKT (THROUGH HOLE) SEE ADDITIONAL FRONT VIEW "M" | 366380020 | BLACK | AVAILABLE (SEE VIEW 'A') | 1.6 | 1.5 | 8 | L1 & M1,L2 & M2 L3 & M3,L4 & M4 |
| | | 366380021 | BROWN | | | | | A1 TO H1,J1 AND K1 A2 TO H2,J2 AND K2 A3 TO H3,J3 AND K3 A4 TO H4,J4 AND K4 |
| | | 366380022 | BLACK | NOT AVAILABLE (SEE VIEW 'B') | 0.8/1.6/2.0 | 0.64 | 40 | |
| | | 366380023 | BROWN | | | | | |
| | ASSY CMC 48 WAY 48 CKT (COUNTER SINK) SEE ADDITIONAL FRONT VIEW "L" | 366380002 | BLACK | AVAILABLE (SEE VIEW 'A') | 1.6 | 1.5 | 8 | L1 & M1,L2 & M2 L3 & M3,L4 & M4 |
| | | 366380003 | BROWN | | | | | A1 TO H1,J1 AND K1 A2 TO H2,J2 AND K2 A3 TO H3,J3 AND K3 A4 TO H4,J4 AND K4 |
| | | 366380004 | BLACK | NOT AVAILABLE (SEE VIEW 'B') | 0.8/1.6/2.0 | 0.64 | 40 | |
| | | 366380005 | BROWN | | | | | |
| | ASSY CMC 48 WAY 36 CKT (COUNTER SINK) SEE ADDITIONAL FRONT VIEW "L" | 366380006 | BLACK | AVAILABLE (SEE VIEW 'A') | 1.6 | 1.5 | 6 | L2 & M2 L3 & M3,L4 & M4 |
| | | 366380007 | BROWN | | | | | |
| | | 366380008 | BLACK | NOT AVAILABLE (SEE VIEW 'B') | 0.8/1.6/2.0 | 0.64 | 30 | A2 TO H2,J2 AND K2 A3 TO H3,J3 AND K3 A4 TO H4,J4 AND K4 |
| | | 366380009 | BROWN | | | | | |
| DESIGNATION | MOLEX PN | CODING COLOUR | PCB LOCKING ON GRID PLATE | FOR PCB OF THICKNESS | SPEC | QTY | CAVITIES NUMBER | |
| | | | | | PIN | | | |

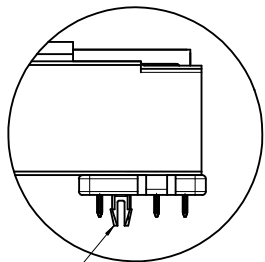


ADDITIONAL BACK VIEW

NOTES :

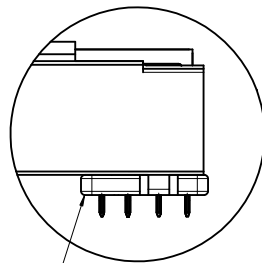
1. AREA FOR JXI AND MOLEX PART NUMBER REPRESENTATION
2. AREA FOR PLASTIC MATERIAL >PBT-30%GF< DESCRIPTION
3. PAINT WITH WHITE COLOR (RoHS COMPLIANT) AT SPECIFIED TWO AREAS
4. PAINT WITH BROWN COLOR (RoHS COMPLIANT) AT SPECIFIED AREA ON BOTH SIDE FOR PN: 366380003,366380005, 366380007,366380009, 366380021, 366380023.
5. PART TO MEET SOLDERABILITY SPEC SM5-152
6. PACKAGING SPECIFICATION:PK-36638-002
7. PCB SOLDER HOLE SIZE IS DIA 1.1(+0.10/-0.05) FOR THE TERMINALS
8. MANUAL/WAVE SOLDER COMPATIBLE.
9. FOR OTHER DIMENSION(S) REFER REMAINING VIEWS IN THE DRAWING

VIEW 'A'

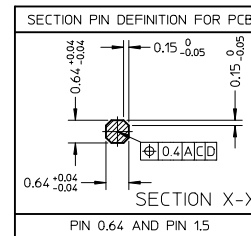


GRID PLATE WITH PCB LOCKING

VIEW 'B'

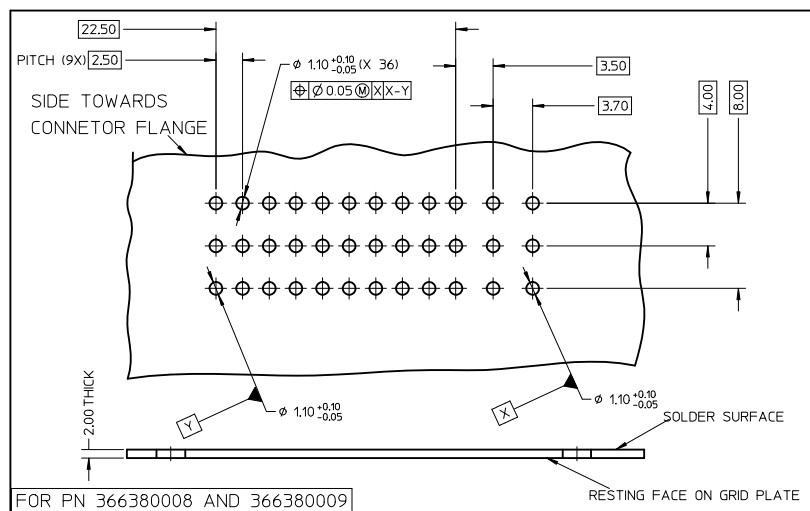
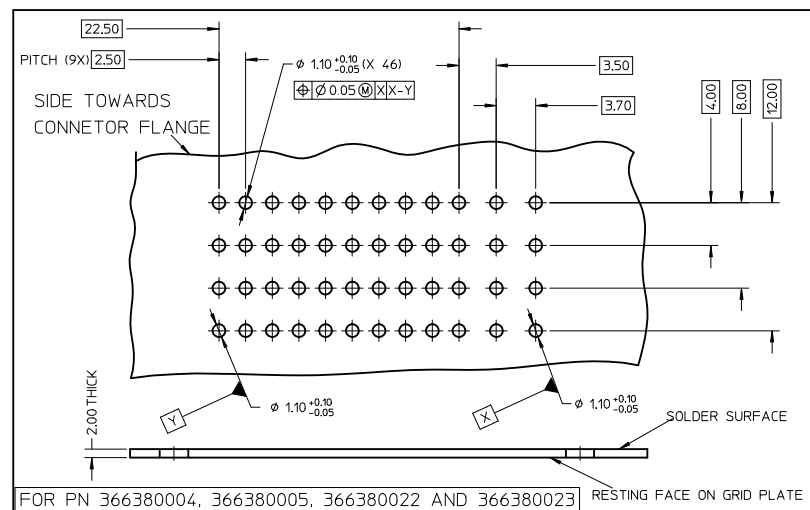
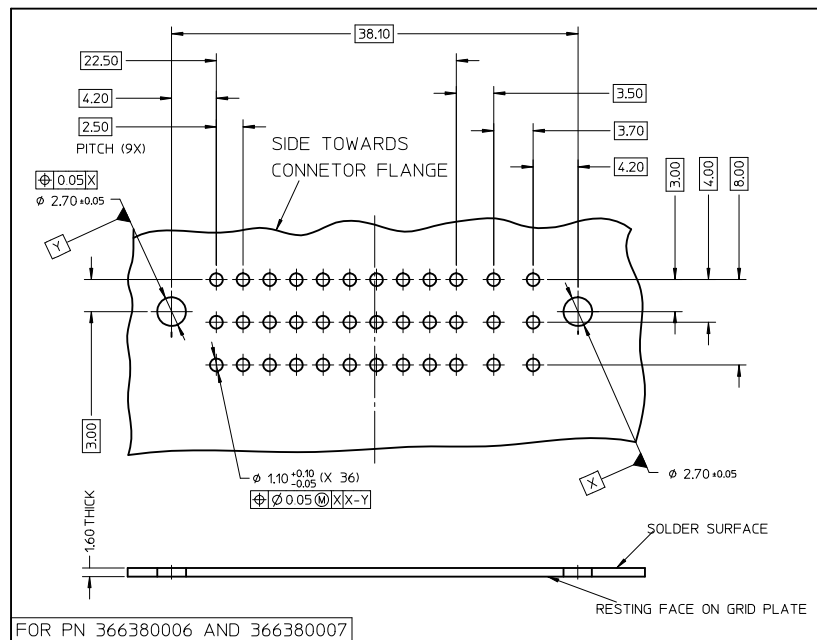
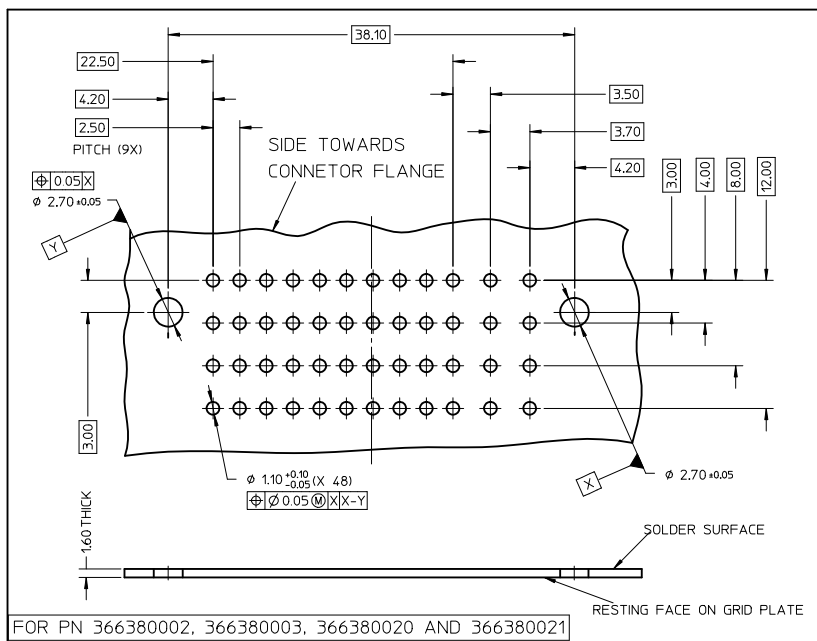


GRID PLATE WITHOUT PCB LOCKING

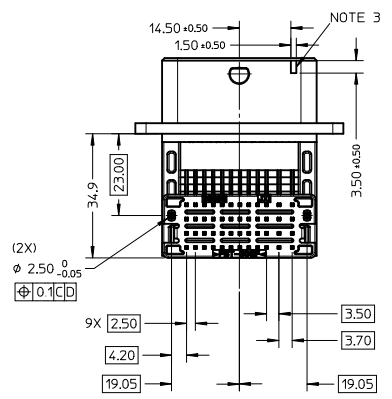
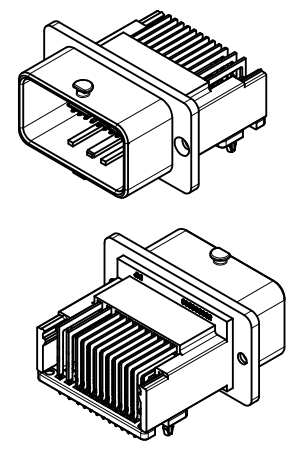
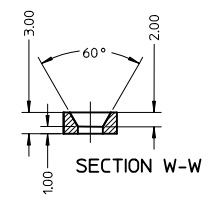
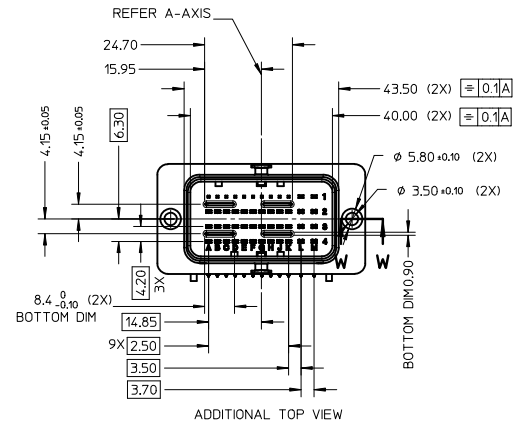
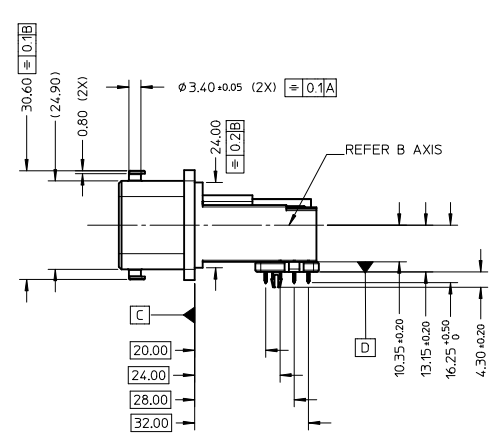
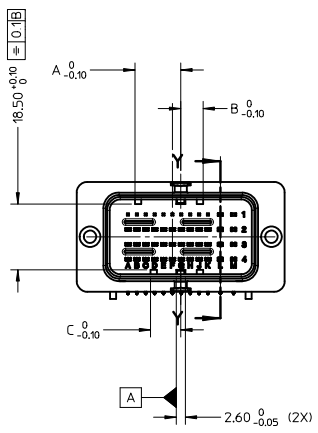


| | | | | | | | | |
|---|-------------------------------|--|------|---|--------------------|--|------------------------|------------------------|
| ENTER DESCRIPTION EC NO: 2012-0265 DRWN:WUTTARKAR 2012/04/09 CHKD: CHIKD: APPR:KPRASAD 2012/04/09 | QUALITY SYMBOLS ▽=0 ▽=0 | GENERAL TOLERANCES (UNLESS SPECIFIED) | | DIMENSION STYLE MM ONLY | | SCALE 1:1 | DESIGN UNITS METRIC | THIRD ANGLE PROJECTION |
| | | m/m | INCH | DRAWN BY RUPESH | DATE 08/05/2006 | TITLE CMC HEADER 48/48WAY AND 48/36WAY T3 INTERFACE | | |
| 11 | DESCRIPTION | 4 PLACES ± --- ± --- | | CHECKED BY DINESH | DATE 08/05/2006 | MATERIAL NO. SEE TABLE 'A' SD-36638-002 | | |
| | | 3 PLACES ± --- ± --- | | APPROVED BY DINESH | DATE 08/05/2006 | | | |
| | | 2 PLACES ± 0.1 ± --- | | MATERIAL NO. SEE TABLE 'A' | | DOCUMENT NO. SD-36638-002 | | SHEET NO. 2 OF 3 |
| | | 1 PLACE ± 0.2 ± --- | | THIS DRAWING CONTAINS INFORMATION THAT IS PROPRIETARY TO MOLEX INCORPORATED AND SHOULD NOT BE USED WITHOUT WRITTEN PERMISSION | | | | |
| | | ANGULAR ± 1° | | | | | | |
| | | DRAFT WHERE APPLICABLE MUST REMAIN WITHIN DIMENSIONS | | | | | | |

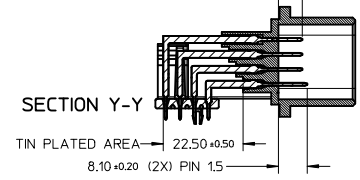
INTERFACE PCB DEFINITION (SOLDER SIDE)



| | | | | | | | |
|---|-------------------------------|---|---------------------|-----------------------------------|---|-------------------------------|------------------------|
| ENTER DESCRIPTION EC NO: 12012-0265 DRAWN: VITARKAR 2012/04/09 CHKD: CHIKR APPR: KRASAD 2012/04/09 11 | QUALITY SYMBOLS ▽=0 ▽=0 | GENERAL TOLERANCES (UNLESS SPECIFIED) | | DIMENSION STYLE MM ONLY | SCALE 1:1 | DESIGN UNITS METRIC | THIRD ANGLE PROJECTION |
| | | mm INCH | DRAWN BY ROOPESH | DATE 08/05/2006 | TITLE CMC HEADER 48/48WAY AND 48/36WAY T3 INTERFACE | | |
| DRAFT WHERE APPLICABLE MUST REMAIN WITHIN DIMENSIONS | 4 PLACES ± --- ± --- | CHECKED BY DINESH | DATE 08/05/2006 | MOLEX INCORPORATED | | | |
| | 3 PLACES ± --- ± --- | APPROVED BY DINESH | DATE 08/05/2006 | SD-36638-002 | | | |
| | 2 PLACES ± 0.1 ± --- | MATERIAL NO. SEE TABLE 'A' | DOCUMENT NO. | SHEET NO. 3 OF 3 | | | |
| 1 PLACE ± 0.2 ± --- | ANGULAR ± 1 ° | THIS DRAWING CONTAINS INFORMATION THAT IS PROPRIETARY TO MOLEX INCORPORATED AND SHOULD NOT BE USED WITHOUT WRITTEN PERMISSION | | | | | |



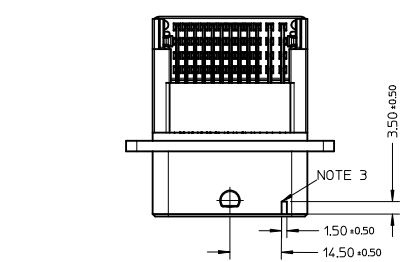
0.64x0.64 TERMINAL
GOLD PLATED AT CONTACT AREA (6.7+0.5mm)
6.70+0.20 (x4) PIN0.64 & PIN1.5 (x6)



| | | |
|-----------|-------|-----------|
| D | 6.30 | 366380013 |
| C | 8.50 | & |
| B | 6.30 | 366380019 |
| A | 12.90 | (BLACK) |
| DIMENSION | | MOLEX PN |

| | | | | | |
|--------|-----------------------------|----------------------|---|----|----|
| 5 | GRID PLATE WITHOUT PCB LOCK | PBT 30% GLASS FILLED | BLACK | 0 | 1 |
| 4 | GRID PLATE WITH PCB LOCK | | BLACK | 1 | 0 |
| 3 | HOUSING | | BLACK | 1 | 1 |
| 2 | 1.5 | CuZn30 | NICKEL UNDERCOAT: 1.3µM TO 2.2µM | 6 | 6 |
| 1 | 0.64 | CuZn30 | OVERCOAT:SELECTIVE GOLD 1.27µM Min & MATTE TIN 4µM TO 5µM | 30 | 30 |
| SL NO. | DESIGNATION | MATERIAL | FINISH | | |

| | |
|-----------|-----------|
| 366380013 | 366380019 |
| BOM QTY | |



RoHS COMPLIANT

THIRD ANGLE PROJECTION

QUALITY SYMBOLS

GENERAL TOLERANCES (UNLESS SPECIFIED)

| | | |
|----------|--------|---------|
| | mm | INCH |
| 4 PLACES | ± 0.15 | ± 0.006 |
| 3 PLACES | ± 0.10 | ± 0.004 |
| 2 PLACES | ± 0.08 | ± 0.003 |
| 1 PLACE | ± 0.05 | ± 0.002 |

ANGULAR ±1/2°

DRAFT WHERE APPLICABLE MUST REMAIN WITHIN DIMENSIONS

DIMENSION STYLE
MM ONLY

SCALE
1:1

DESIGN UNITS
METRIC

DRAWN BY
SNS01

DATE
2010/07/20

TITLE
CMC HEADER 48/36WAY T3 INTERFACE

CHECKED BY
KPRASAD

DATE
2010/10/26

APPROVED BY
KPRASAD

DATE
2010/10/26

MATERIAL NO.
SEE TABLE 'A'

DOCUMENT NO.
SD-36638-013

SHEET NO.
1 OF 2

THIS DRAWING CONTAINS INFORMATION THAT IS PROPRIETARY TO MOLEX INCORPORATED AND SHOULD NOT BE USED WITHOUT WRITTEN PERMISSION

