



Chipsmall Limited consists of a professional team with an average of over 10 year of expertise in the distribution of electronic components. Based in Hongkong, we have already established firm and mutual-benefit business relationships with customers from,Europe,America and south Asia,supplying obsolete and hard-to-find components to meet their specific needs.

With the principle of “Quality Parts,Customers Priority,Honest Operation,and Considerate Service”,our business mainly focus on the distribution of electronic components. Line cards we deal with include Microchip,ALPS,ROHM,Xilinx,Pulse,ON,Everlight and Freescale. Main products comprise IC,Modules,Potentiometer,IC Socket,Relay,Connector.Our parts cover such applications as commercial,industrial, and automotives areas.

We are looking forward to setting up business relationship with you and hope to provide you with the best service and solution. Let us make a better world for our industry!



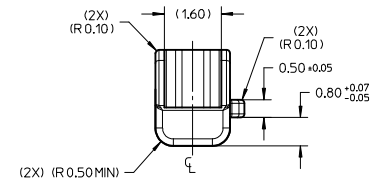
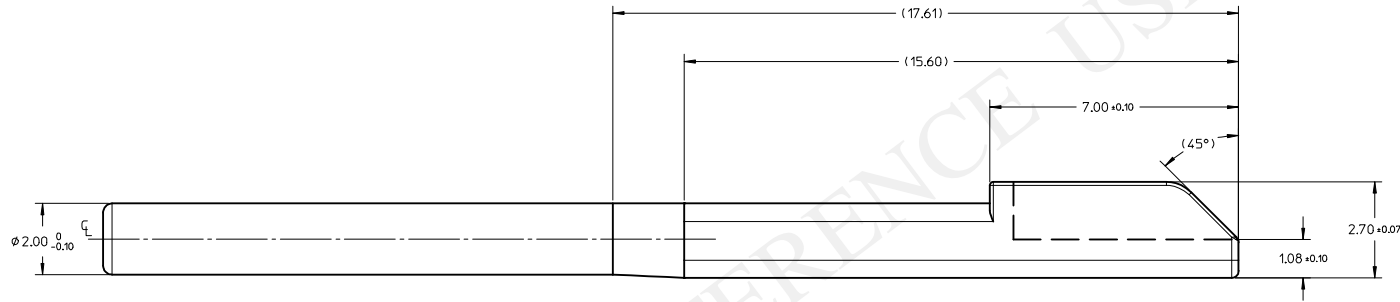
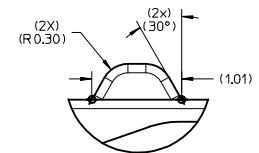
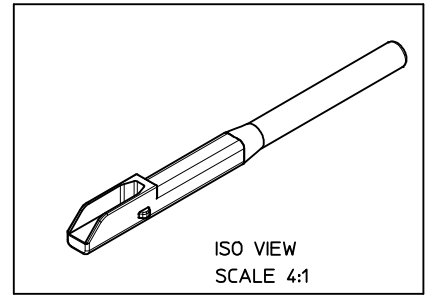
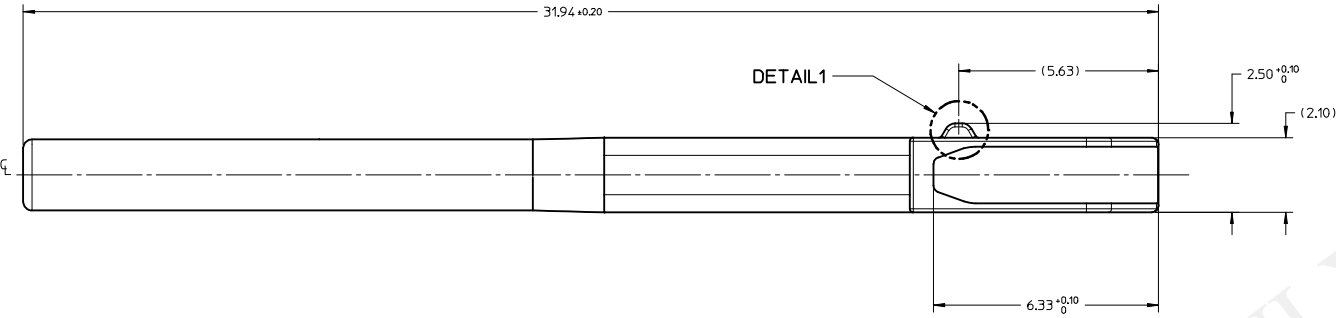
Contact us

Tel: +86-755-8981 8866 Fax: +86-755-8427 6832

Email & Skype: info@chipsmall.com Web: www.chipsmall.com

Address: A1208, Overseas Decoration Building, #122 Zhenhua RD., Futian, Shenzhen, China





- NOTES:
1. MATERIAL: NYLON 30%GF
 2. ALLOWABLE FLASH 0.08 UNLESS OTHERWISE SPECIFIED.
 3. PK-36804-001 (DOCUMENT NEED UPDATION)
 4. USE WITH 36792/36807

INITIAL RELEASE EC NO: 2013-0007 DRAWN: MRAMAKRISHNA 2012/07/05 CHKD: APPR: VUTTARKAR 2012/07/17 REV 1	QUALITY SYMBOLS	GENERAL TOLERANCES (UNLESS SPECIFIED)	DIMENSION STYLE	SCALE	DESIGN UNITS	THIRD ANGLE PROJECTION
	▽=0	4 PLACES ± --- ± ---	MM ONLY	10:1	METRIC	MX 120G CAVITY PLUG FOR RECEPTACLE molex
	▽=0	3 PLACES ± --- ± ---	DRAWN BY DATE	TITLE	SD-36804-001 SHEET NO. 1 OF 1	
	▽=0	2 PLACES ± 0.13 ± ---	MRAMAKRISHNA 2012/07/05	CHECKED BY DATE		DOCUMENT NO.
	1 PLACE ± 0.25 ± ---	1 PLACE ± 0.25 ± ---	APPROVED BY DATE			
	0 PLACE ± --- ± ---	0 PLACE ± --- ± ---	VUTTARKAR 2012/07/17			
		ANGULAR ± --- °	MATERIAL NO.			
		DRAFT WHERE APPLICABLE MUST REMAIN WITHIN DIMENSIONS	368040001			
			SIZE A2	THIS DRAWING CONTAINS INFORMATION THAT IS PROPRIETARY TO MOLEX INCORPORATED AND SHOULD NOT BE USED WITHOUT WRITTEN PERMISSION		