



Chipsmall Limited consists of a professional team with an average of over 10 year of expertise in the distribution of electronic components. Based in Hongkong, we have already established firm and mutual-benefit business relationships with customers from,Europe,America and south Asia,supplying obsolete and hard-to-find components to meet their specific needs.

With the principle of “Quality Parts,Customers Priority,Honest Operation,and Considerate Service”,our business mainly focus on the distribution of electronic components. Line cards we deal with include Microchip,ALPS,ROHM,Xilinx,Pulse,ON,Everlight and Freescale. Main products comprise IC,Modules,Potentiometer,IC Socket,Relay,Connector.Our parts cover such applications as commercial,industrial, and automotives areas.

We are looking forward to setting up business relationship with you and hope to provide you with the best service and solution. Let us make a better world for our industry!



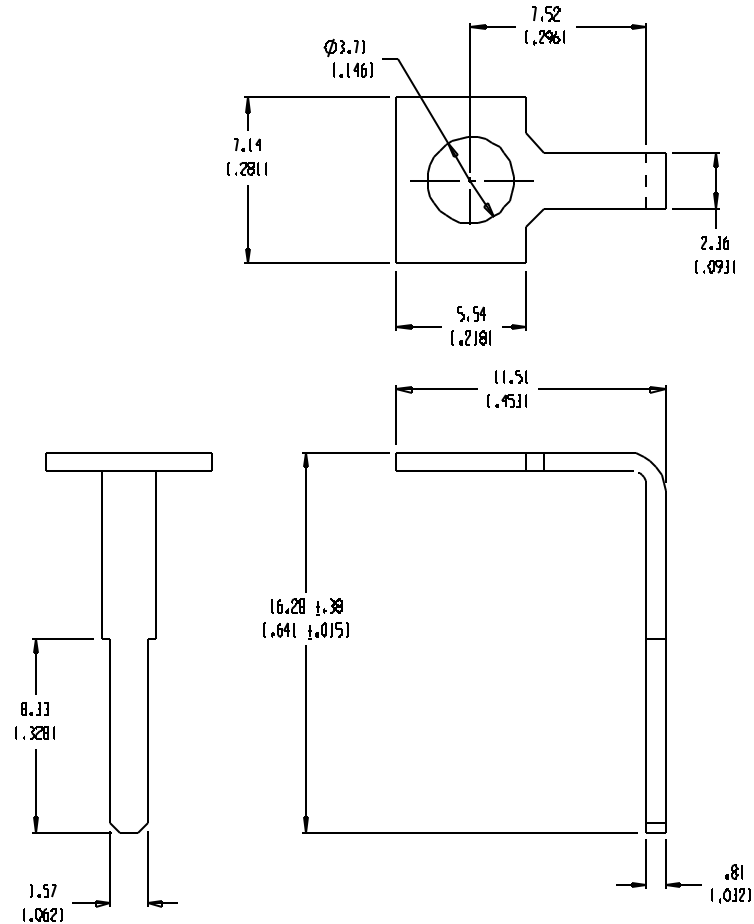
## Contact us

Tel: +86-755-8981 8866 Fax: +86-755-8427 6832

Email & Skype: info@chipsmall.com Web: www.chipsmall.com

Address: A1208, Overseas Decoration Building, #122 Zhenhua RD., Futian, Shenzhen, China





NOTES:

1. MATERIAL: SEE TABLE
2. FINISHES: SEE TABLE
3. PRODUCT SPECIFICATION: NOT REQUIRED
4. PACKAGING: NOT REQUIRED
5. MATES WITH: NONE
6. USED WITH: 1400, 1500, 1600, 1700, & 7600 SERIES TERMINAL STRIPS.

ITEM	QTY.	DESCRIPTION	MATERIAL NO.	MATERIAL	FINISH
1	1	TERMINAL	38002-0214	BRASS	TIN
1	1	TERMINAL	38002-0213	BRASS	NICKEL

RELEASED ON ECO 11/4/02 DRWN: WH 11/20/03 CHK: APPR:	QUALITY SYMBOLS MAJOR CRITICAL SPC	GENERAL TOLERANCES (UNLESS SPECIFIED)		SCALE: 5:1	DESIGN UNITS <input type="checkbox"/> MM <input checked="" type="checkbox"/> INCH	THIRD ANGLE PROJECTION	PROJECT NO.: - - DIMENSIONS: SHT REV <input checked="" type="checkbox"/> INCH <input type="checkbox"/> INCH <input type="checkbox"/> MM ONLY
		4 PLACES ±.0015 3 PLACES ±.038 ±.005 2 PLACES ±.13 ±.01 1 PLACE ±.3		DRAWN BY & DATE V. HOWARD 11/20/03		TITLE: TERMINAL, PRINTED CIRCUIT Y (LONG) (CAT #146)	
		ANGLE: ±2°		CHECKED BY & DATE		APPROVED BY & DATE	
		DRAFT WHERE APPLICABLE MUST REMAIN WITHIN DIMENSIONS		CAP FILENAME 1404-4101		MATERIAL NO. SEE TABLE DRAWING NO. SD-38002-030 SHEET NO. 1 OF 1	
THIS DRAWING CONTAINS INFORMATION THAT IS PROPRIETARY TO MOLEX INCORPORATED AND SHOULD NOT BE USED WITHOUT WRITTEN PERMISSION.							MOLEX INCORPORATED

F  
E  
D  
C  
B  
A

10  
9  
8  
7  
6  
5  
4  
3  
2  
1