



Chipsmall Limited consists of a professional team with an average of over 10 year of expertise in the distribution of electronic components. Based in Hongkong, we have already established firm and mutual-benefit business relationships with customers from,Europe,America and south Asia,supplying obsolete and hard-to-find components to meet their specific needs.

With the principle of “Quality Parts,Customers Priority,Honest Operation,and Considerate Service”,our business mainly focus on the distribution of electronic components. Line cards we deal with include Microchip,ALPS,ROHM,Xilinx,Pulse,ON,Everlight and Freescale. Main products comprise IC,Modules,Potentiometer,IC Socket,Relay,Connector.Our parts cover such applications as commercial,industrial, and automotives areas.

We are looking forward to setting up business relationship with you and hope to provide you with the best service and solution. Let us make a better world for our industry!



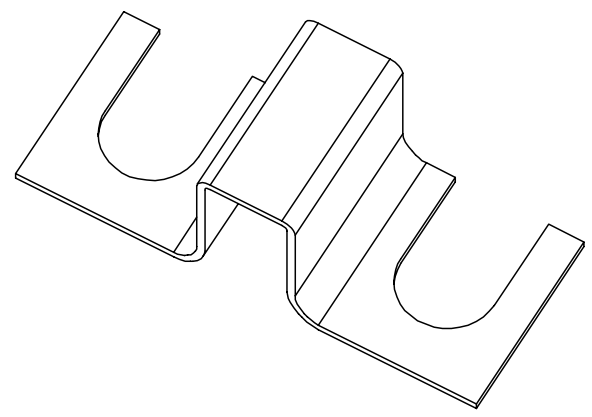
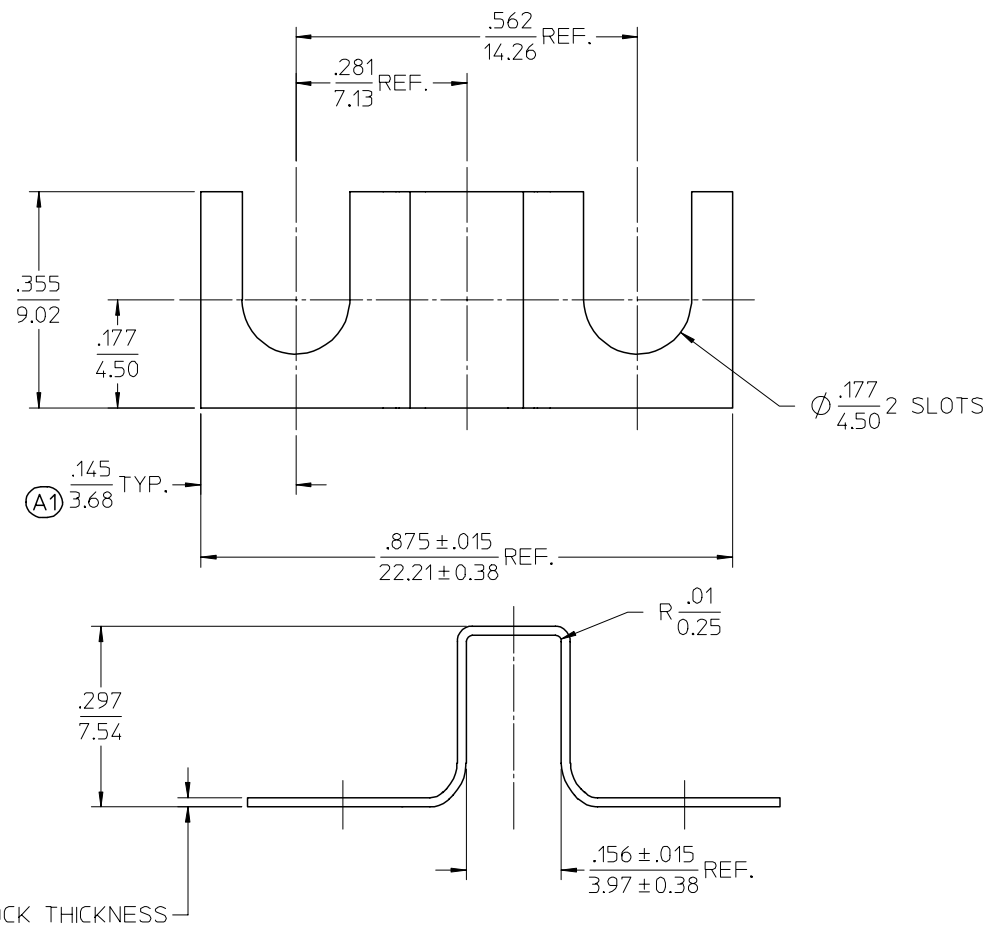
## Contact us

Tel: +86-755-8981 8866 Fax: +86-755-8427 6832

Email & Skype: info@chipsmall.com Web: www.chipsmall.com

Address: A1208, Overseas Decoration Building, #122 Zhenhua RD., Futian, Shenzhen, China





NOTES:

1. MATERIAL: SEE TABLE
2. FINISHES: SEE TABLE
3. PRODUCT SPECIFICATION: NOT REQUIRED
4. PACKAGING: NOT REQUIRED
5. MATES WITH: 21, 22, AND 26 SERIES BTS

|              |          |          |               |
|--------------|----------|----------|---------------|
| 380020442    | 2132     | BRASS    | NICKEL PLATED |
| MATERIAL NO. | ENG. NO. | MATERIAL | FINISH        |

|                          |              |                      |                           |
|--------------------------|--------------|----------------------|---------------------------|
| DIMENSION STYLE<br>IN/MM | SCALE<br>5:1 | DESIGN UNITS<br>INCH | THIRD ANGLE<br>PROJECTION |
|--------------------------|--------------|----------------------|---------------------------|

|                        |                    |
|------------------------|--------------------|
| DRAWN BY<br>C. YORK    | DATE<br>2004/03/11 |
| CHECKED BY<br>R. STONE | DATE<br>2004/03/16 |
| APPROVED BY<br>GHR     | DATE<br>2004/03/17 |

TITLE  
JUMPER TERMINAL, SLOTTED TYPE

|                           |                              |                     |
|---------------------------|------------------------------|---------------------|
| MATERIAL NO.<br>SEE CHART | DOCUMENT NO.<br>SD-38002-036 | SHEET NO.<br>1 OF 1 |
|---------------------------|------------------------------|---------------------|

THIS DRAWING CONTAINS INFORMATION THAT IS PROPRIETARY TO MOLEX INCORPORATED AND SHOULD NOT BE USED WITHOUT WRITTEN PERMISSION

|                  |                     |            |
|------------------|---------------------|------------|
| CHANGED SLOT DIM | EC NO: ETC2006-0370 | 2006/04/17 |
|                  | DRWN:NASAYDEH       | 2006/04/17 |
| DESCRIPTION      | CHKD:RDEROSS        | 2006/04/17 |
|                  | APPR:RDEROSS        | 2006/04/18 |
| REV              | A1                  |            |

|                 |  |         |    |      |          |        |         |          |        |         |          |        |       |         |       |
|-----------------|--|---------|----|------|----------|--------|---------|----------|--------|---------|----------|--------|-------|---------|-------|
| QUALITY SYMBOLS | GENERAL TOLERANCES (UNLESS SPECIFIED)  |         |    |      |          |        |         |          |        |         |          |        |       |         |       |
|                 | <table border="1"> <tr> <td></td> <td>mm</td> <td>INCH</td> </tr> <tr> <td>4 PLACES</td> <td>± .005</td> <td>± .0005</td> </tr> <tr> <td>3 PLACES</td> <td>± .010</td> <td>± .0010</td> </tr> <tr> <td>2 PLACES</td> <td>± 0.13</td> <td>± .01</td> </tr> <tr> <td>1 PLACE</td> <td>± 0.3</td> <td>± .01</td> </tr> </table> |         | mm | INCH | 4 PLACES | ± .005 | ± .0005 | 3 PLACES | ± .010 | ± .0010 | 2 PLACES | ± 0.13 | ± .01 | 1 PLACE | ± 0.3 |
|                 | mm   | INCH    |    |      |          |        |         |          |        |         |          |        |       |         |       |
| 4 PLACES        | ± .005   | ± .0005 |    |      |          |        |         |          |        |         |          |        |       |         |       |
| 3 PLACES        | ± .010   | ± .0010 |    |      |          |        |         |          |        |         |          |        |       |         |       |
| 2 PLACES        | ± 0.13   | ± .01   |    |      |          |        |         |          |        |         |          |        |       |         |       |
| 1 PLACE         | ± 0.3  | ± .01   |    |      |          |        |         |          |        |         |          |        |       |         |       |
|                 | ANGULAR ± 2 °  |         |    |      |          |        |         |          |        |         |          |        |       |         |       |
|                 | DRAFT WHERE APPLICABLE MUST REMAIN WITHIN DIMENSIONS   |         |    |      |          |        |         |          |        |         |          |        |       |         |       |